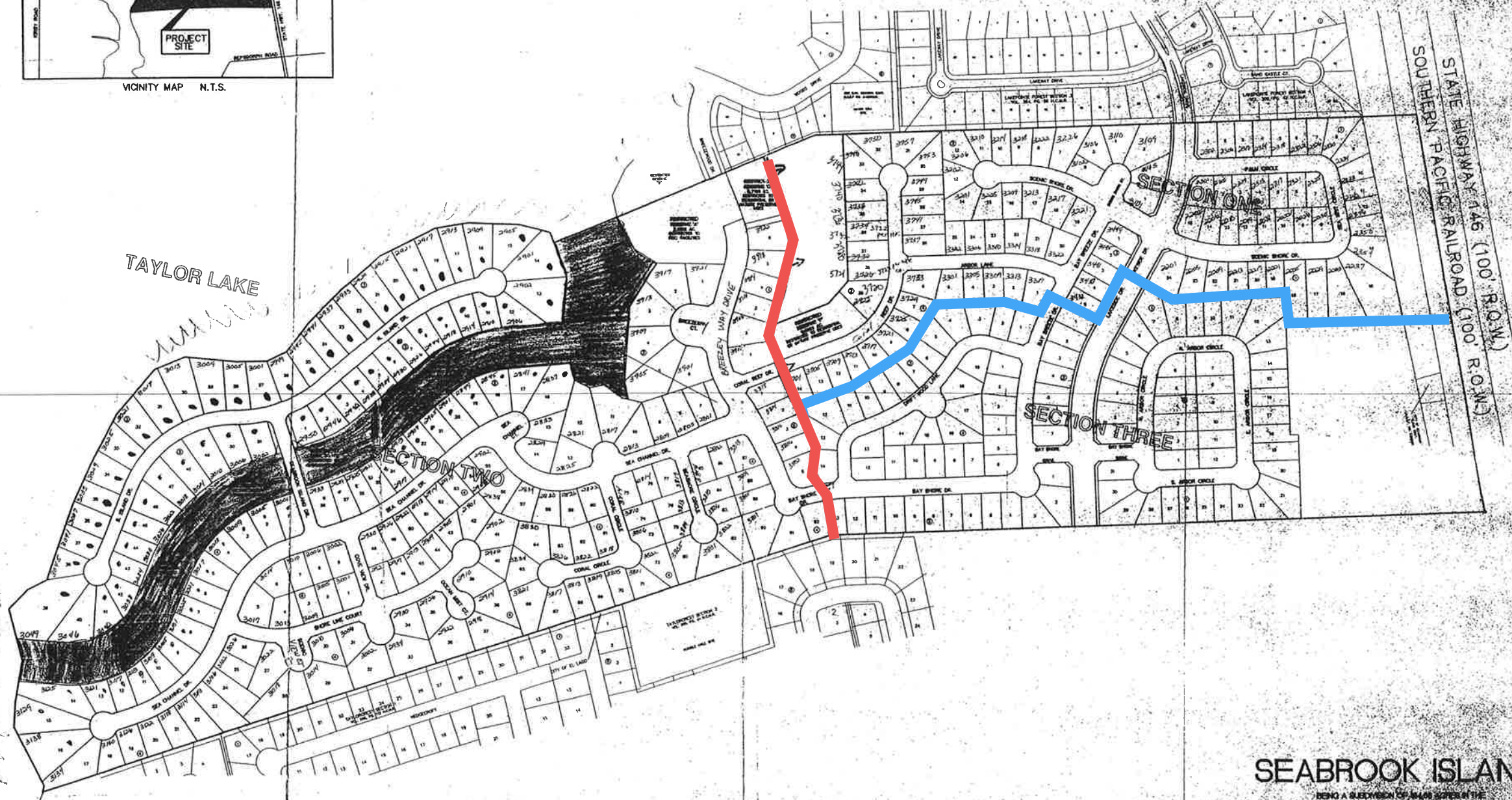


VICINITY MAP N.T.S.



TAYLOR LAKE

SECTION TWO

SECTION ONE

SECTION THREE

STATE HIGHWAY 146 (100' R.O.W.)
SOUTHERN PACIFIC RAILROAD (100' R.O.W.)

SEABROOK ISLAND

BEING A SUBDIVISION OF SEABROOK ISLAND
WITH MORRIS BUREY ABSTRACT, CITY OF SEABROOK,
HARRIS COUNTY, TEXAS
MAY 1, 1980
AND 1981
TAYLOR LAKE DEVELOPMENT, LTD.
TAYLOR LAKE HOLDINGS, INC.
CENTIMARK ENGINEERING, P.C.