

# Acreage Home Sites



## 8-14 Acre Properties

- New Survey
- Incredible Location just Minutes from I-75
  - Hard to Find Acreage Property
  - County Water
  - Paved Road
- Huge Pine and Hardwood Timber
  - Financing with 15% Down

**Spalding County, Ga**

**404-313-1188**

North Walkers Mill Road

825 ft

**1 & 2**

14.421 Ac

715 ft

921 ft

**3**

9.278 Ac

422 ft

1001 ft

**4**

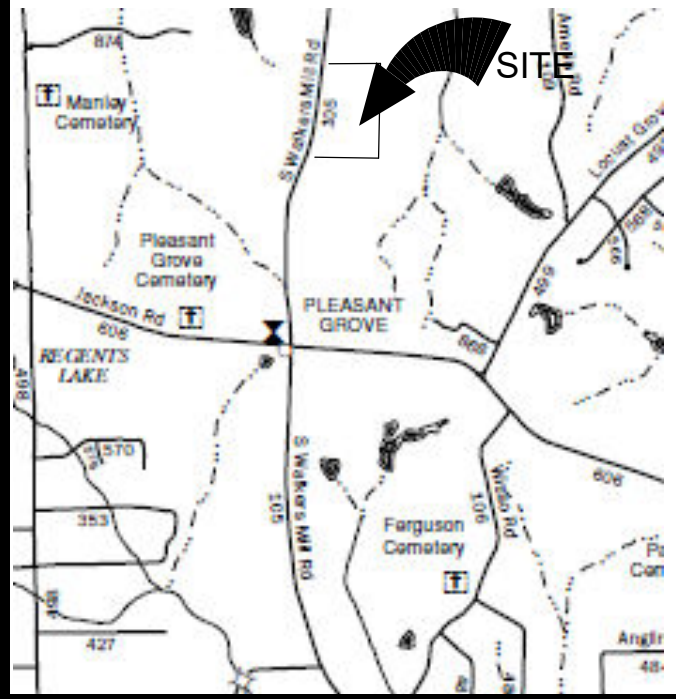
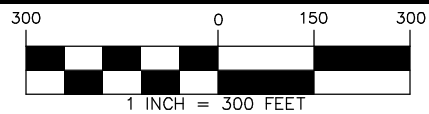
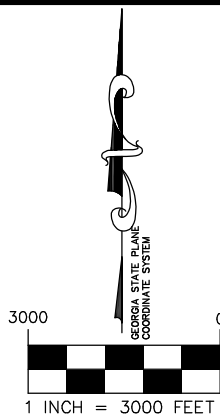
8.312 Ac

355 ft

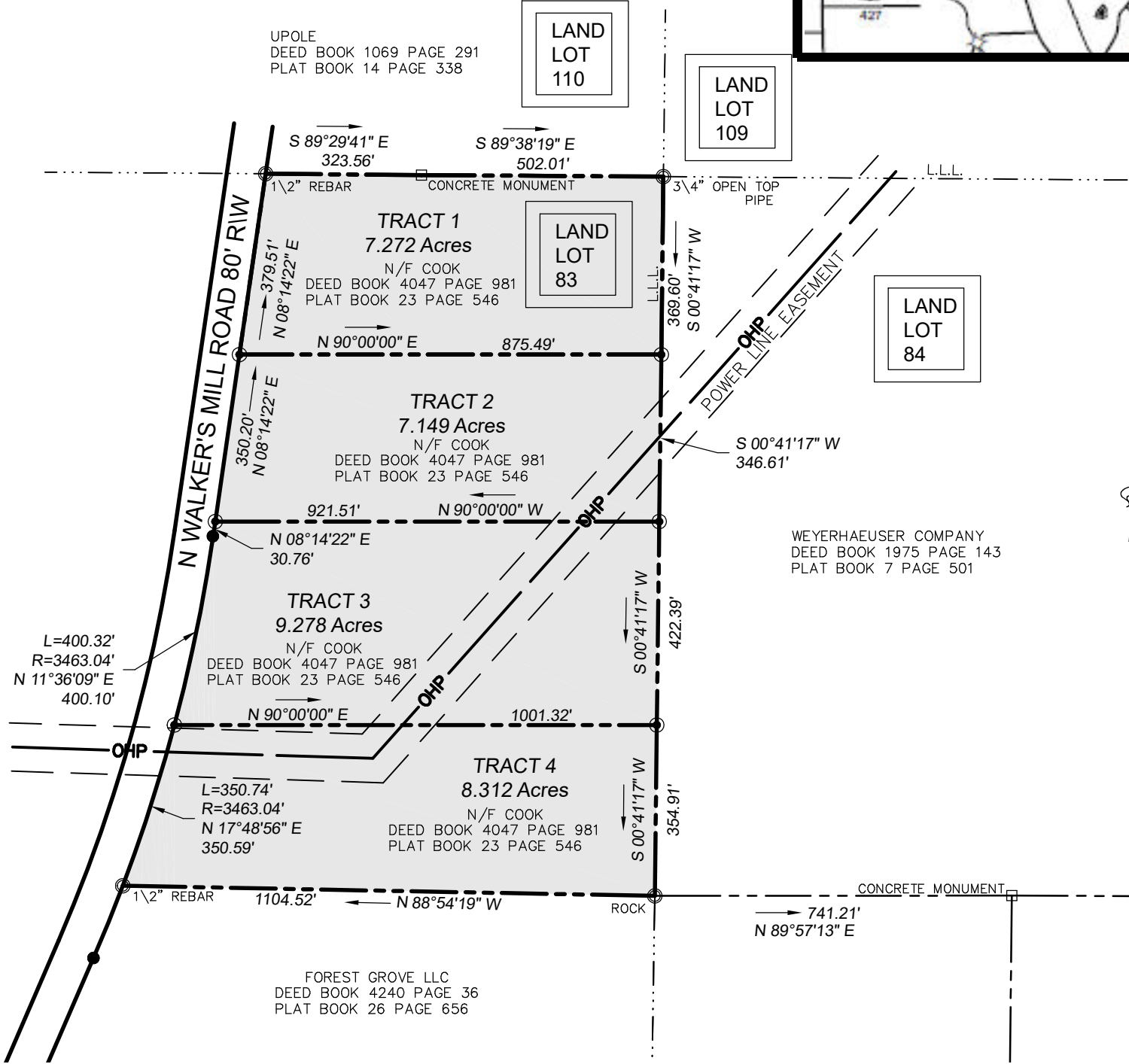
1104 ft



MATTHEW S. JOHNSON, P.L.S.  
 GEORGIA REGISTRATION NO. 2868  
 261 COUNTY LINE ROAD  
 OGLETHORPE, GA 31068  
 (229) 942-5923



THIS BLOCK RESERVED FOR THE CLERK OF SUPERIOR COURT



**SURVEYOR'S CERTIFICATION (I)  
 JURISDICTIONAL APPROVAL**

As required by subsection (d) of O.C.G.A. Section 15-6-67, this plat has been prepared by a land surveyor and approved by all applicable local jurisdictions for recording as evidenced by approval certificates, signatures, stamps, or statements hereon. Such approvals or affirmations should be confirmed with the appropriate governmental bodies by any purchaser or user of this plat as to intended use of any parcel. Furthermore, the undersigned land surveyor certifies that this plat complies with the minimum technical standards for property surveys in Georgia as set forth in the rules and regulations of the Georgia Board of Registration for Professional Engineers and Land Surveyors and as set forth in O.C.G.A. Section 15-6-67. The following governmental bodies have approved this map, plat, or plan for filing:

This Survey complies with both the rules of the Georgia Board of Registration for Professional Engineers and Land Surveyors and the Official Code of Georgia Annotated (OCGA) 15-6-67 as amended by HB1004 (2016), in that where a conflict exists between those two sets of specifications, the requirements of law prevail. It is hereby certified that this plat is true and correct as to the property lines and all improvements shown thereon, and was prepared from an actual survey of the property made by me or under my supervision; that all monuments shown hereon actually exist, and their location, size, type and material are correctly shown. The linear and angular measurements shown on this plat were obtained by using TOPCON HIPER II/V base and rover GPS receivers, in combination with a TOPCON QS-3 ROBOTIC TOTAL STATION. The relative positional accuracy obtained on the points utilized in this survey were less than or equal to 0.02' horizontal at the 95% confidence level. Distances shown hereon are ground distances obtained from grid measurements using a combined scale factor. This plat was calculated for closure and is found to have a minimum plat closure of one foot in 295,136 feet. The field survey was completed on 3/19/2018.

This survey and certification given hereon is valid only if recorded in the office of the Clerk of Court in its original form by Matthew S. Johnson as shown by the participant ID in the Clerk's stamp in the upper left corner of this plat. No other uses are authorized by this surveyor.

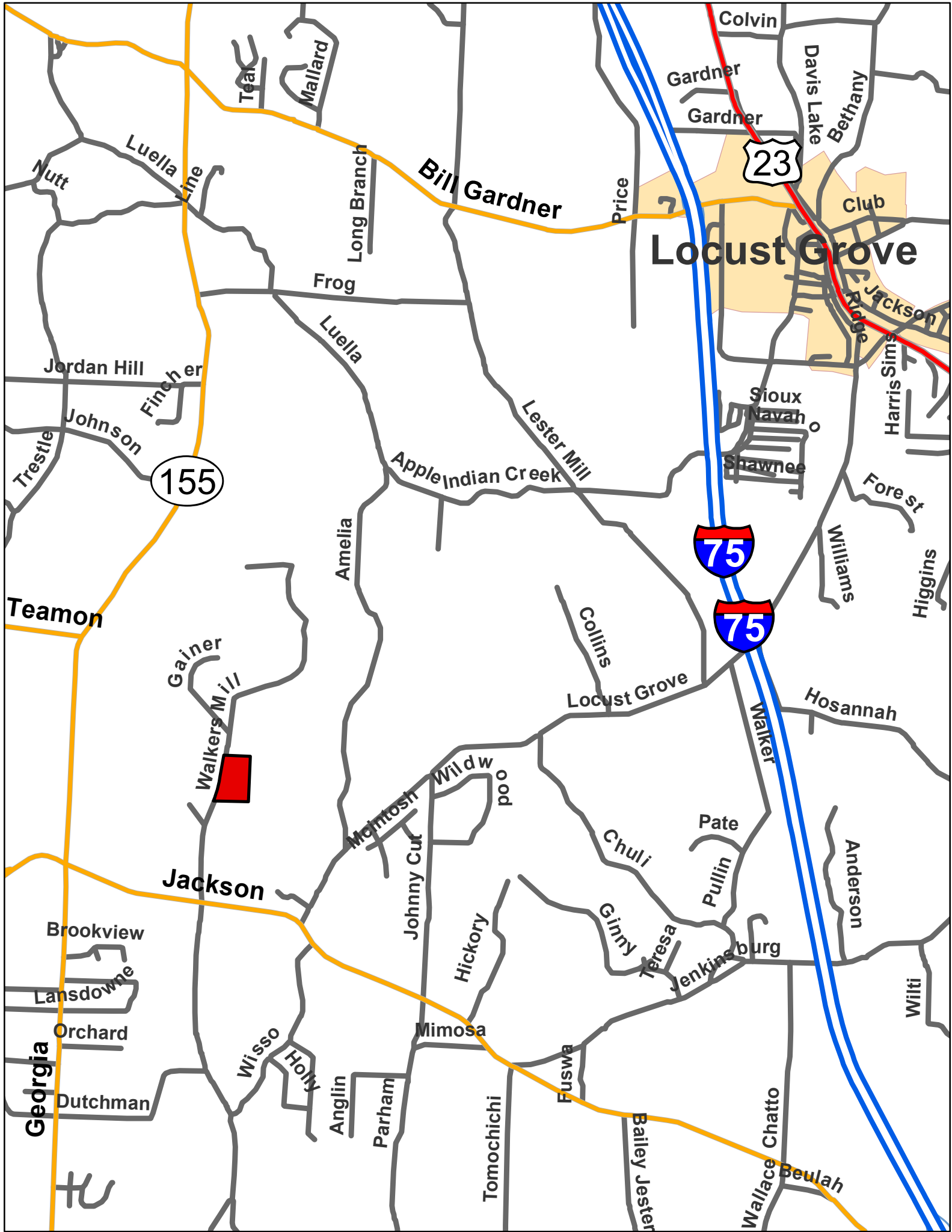
MATTHEW S. JOHNSON GA RLS #2868

**LEGEND**

- 1/2" REBAR SET
- x — FENCE
- IRON PIN FOUND
- CONCRETE MONUMENT

*DIVISION SURVEY FOR  
 GEORGIA PROPERTIES, INC.  
 LOCATED IN LAND LOT 83  
 2nd LAND DISTRICT  
 SPALDING COUNTY, GEORGIA  
 MARCH 19, 2018*





23

155

75

75

Locust Grove

Bill Gardner

Teamon

Jackson

Georgia

Brookview

Lansdowne

Orchard

Dutchman

Wisso

Holy

Anglin

Parham

Mimosa

Hickory

Tomochichi

Fuswa

Bailey Jester

Wallace Chatto

Beulah



Walkers Mill

Gainer

Montosh

Wildwood

Johnny Cut

Wildwood

Chuli

Pate

Pullin

Ginny

Teresa

Jenkinsburg

Anderson

Wilti

Hosannah

Locust Grove

Walker

Williams

Higgins

Forest

Shawnee

Sioux Navah

Harris Sims

Club

Davis Lake

Bethany

Gardner

Gardner

Colvin

Mallard

Teak

Long Branch

Frog

Luella

Apple Indian Creek

Lester Mill

Amelia

Jordan Hill

Fincher

Johnson

Trestle

Nutt

Luella Line