



# Grade Level Championships



June 3, 2018, Greenfield Hall, Edmonton

Sign-in 12:30 to 12:45 p.m. • More details on Page 3

## Roving ChessNuts CHESS Teasers



NEWS, RESULTS, UPCOMING EVENTS, PHOTOS AND INTERESTING STUFF  
MAINLY ABOUT SCHOLASTIC CHESS IN EDMONTON & CHESSNUTS ACTIVITIES



Volume 10, Issue 23 • May 14, 2018

### Flowers and chocolates mixed with chess pieces

Flowers and chocolates were features of the May 13 Mother's Day Tournament held at Edmonton's Greenfield Hall.

A total of 50 players participated in 12 round-robin sections with Sam Hoekman victorious in the top-rated section.

There were others who despite less experience than the higher-rated players did very well such as unrated and first tournament players Scott Tang and Jerry Nie.

There was an abundance of draw prizes and about half of the players went home with either a chess-related prize or a prize of

chocolates - supposedly to share with Mom. All players got a carnation to present to their mothers and two mothers were presented with flowering pots.

In the chess competition, there were few tiebreak games for first place as six sections were won by players winning all their games.

Two sections each had three players end the round-robins with tied scores. With organizers wanting a shorter tournament since it was Mother's Day, three instead of one trophy were awarded in each section.

Organized by The Roving ChessNuts, the competi-

tion was directed by Derek Thomas, Prayus Shrestha and Bruce Thomas.

The next open tournament, the school Grades Championships on June 3 at Greenfield Hall already has 60 players registered in Grades 1 through 9.

Starting May 16, a five-week Wednesday evening (6:30 to 7:45) tournament is being held at the Greenfield Hall meeting room.



A variety of poses are held by players concentrating on their games.

### Results of Mother's Day Flower Tournament:

**Section A** 1. Sam Hoekman, 3.0; 2 Alex Wang, 2.0; 3. Andrew Xiao, 1.0; 4. Garrick Johnson.

**Section B** 1. Pascal LaCroix, 3.0; 2. Shreyas Prasanna, 2.0; Eric Jin, 1.0; 4. Tetyana Shelevach

**Section C** 1. Max Pankewitz, 3.0; 2. on tiebreak Anu Purevjamts, 2.5; 3. Pranav Karthikeyanm 1.5; 4. Terry Li

**Section D** 1. Elon Wang, 3.0; Michelle Enkhtaivan, 2.0; 3.0 Ethan Powney, 1.0; Caleb Menard

**Section D#2** 1 Toby Li, 3.0; 2. Ryan Chen, 2.0; 3. Armaan Patel, 1.0; 4. Connor Dong

**Section E** Three-Way Tie for 1. Dana Lee, Daniel Xie and Brianna Dayman, 3.0 each; 3. Leo Wang

**Section F** 1. Artie Murallidaran, 3.0; 2. Caleb Casorso, 3. Matei Lupu, 1.0; 4. Patrick Wang

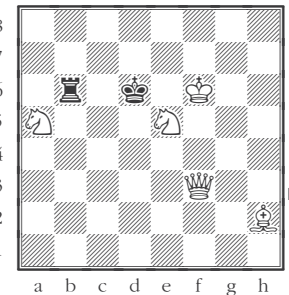
**Section G** Three-way Tie for 1. Vanessa Rodriguez, Ben Zhu and Zidong Liu, 2.0 each; 4. Oscar Kossey

**Section H** 1. Kai Riley, 4.0; 2. Alex Qu, 3.5; Tied for 3. Frank Xia and William Gao, 2.5 each; 5. Vincent Wang, 2.0; 6. Evan Wu, 0.5

**Section J** 1. Jerry Nie, 2.5; 2. Aiden Lee, 2.0; Tushar Kalia, 1.5; 4. Aidan Kelland

**Section K** 1. on tiebreak Tobias Poulsen, 3.0; 2. Jay Lee, 2.0; 3. Owen Pankewitz, 1.5; 4. Liam Cerbas, 0.5

**Section L** 1. on tiebreak Scott Tang, 3.5; 2. Dylan Xie, 2.5; 3. Vihaan Patel, 1.0; Nathan York.



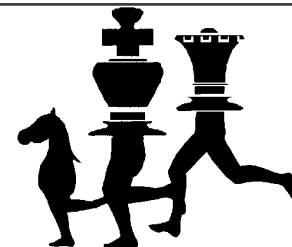
White to move & mate in two moves!

Did you solve this puzzle which appeared in the May 2 issue? The key move which is the move that sets up the checkmate is Qf5. Then you have to figure out how the Queen and Knights will get that checkmate!

# Summer Chess Camps 2018

**July Camps are Tuesday, July 3 to Friday, July 6 (4days)**

**at the Roving ChessNuts** 12019 76 Street, Edmonton



**Full Day (8:30 to 5 p.m.) Half Day (8:30 to 12:30 or 1 to 5 p.m.) Roving ChessNuts**

Dropoffs accepted as early as 8 a.m.; pick-up until 5:20 p.m.

Mail: 12015 - 76 Street NW  
Edmonton, AB T5B 2C9  
780-474-2318

**(Limited enrollment of 12 students, priority to full-day)** (Full-Day players bring a bag lunch; a.m./p.m. healthy snacks provided to all)

- Two instructors on hand so both beginners and experienced players rated up to 1200 will benefit from these camps.
- Ages 8 and above recommended; younger students may be accepted if older sibling also enrolled or if they are already experienced players who have proven themselves able to take classes.
- Raw beginners not knowing legal moves or basic concepts such as checkmate must first be evaluated at least two weeks prior to their first camp. The evaluation will also include basic chess teaching materials which should be studied prior to first day of camp. Evaluations are FREE and last about 30 to 45 minutes; additional time for actual lesson in conjunction can be arranged.
- Students who have NOT been involved in a Roving ChessNuts school program or class or previous camp (or not having a national chess rating) should also be evaluated so we can better know what help they need in developing their chess skills and make sure they do understand game concepts.
- Weather permitting each camp day will feature 60 to 90 minutes of either soccer skills and play or running/fitness activities and testing. Students should bring water bottle, appropriate footwear and outdoor wear. Water cooler, fridge, microwave available.
- All participants must sign and abide by a code of conduct related to sportsmanship, behaviour and chess etiquette.
- All new participants will receive a national Chess'n Math rating, a discount voucher for entry in a scholastic chess tournament and a camp chess souvenir.

**Full Day: \$45 plus GST FULL WEEK \$160 plus GST**

**Half-Day: \$28 plus GST FULL WEEK Half Days: \$100 plus GST**

Family Discounts applied  
for 2 or more students;  
Discounts also available for  
three full or half days

Payment can be made by cheque, credit card, debit card or cash and must be arranged at time of enrollment. Refund, minus \$15 administrative fee can be requested for cancellations received two weeks prior to start of camp. In case of illness or other reasonable absence, credit can be extended to other camp dates or other Roving ChessNuts programs and classes.

E-mail [rovingchessnuts@shaw.ca](mailto:rovingchessnuts@shaw.ca) or call **780-474-2318 to register**

for camps, specify date and times; or for further details

or go to [www.rovingchessnuts.com](http://www.rovingchessnuts.com) for links to online registration

or fill out the below form and bring to Roving ChessNuts, 12015/19 76 Street, Edmonton

**If enrollment exceeds  
the limited enrollment,  
prepaid students will get  
be guaranteed a spot**

## Registration for 2018 July 3 to 6 Chess Camp

Please print clearly. Fill in a sheet for each student.

Camps subject to minimal enrollment. Should a camp not be proceeding you will be notified at least two weeks prior to start date.

Circle Your Choices:

Week of July 3 to 6 FULL WEEK FULL DAYS HALF DAY MORNINGS HALF DAY AFTERNOONS

If only specific days of this week, please list actual dates: \_\_\_\_\_

**We are expecting to be able to offer July campers a discount if they are also  
going to be attending the Giant Checkmate and Fitness Fun Camp  
August 27 to 31, 2018 at Greenfield Hall, 3803 114 Street**

**A \$50 Deposit will hold a spot at the August Camp / By July Camp we will know about discount**

See Page 4 for more details about the August Camp

If presenting in person,  
fees can be calculated  
at that time;  
or else let us know your  
choices and we will  
provide you an invoice.

Name: \_\_\_\_\_ Grade: \_\_\_\_\_ Birthdate (M/D/Y): \_\_\_\_\_ Phone: \_\_\_\_\_

Best e-mail for updates and notices: \_\_\_\_\_ (NOT shared and used only for scholastic chess purposes)

Address: \_\_\_\_\_ City: \_\_\_\_\_ Postal Code: \_\_\_\_\_

Any information that instructor and supervisors should know about the student (severe allergies, learning difficulties, etc.)

**CALCULATED AMOUNT OF CAMP FEES OR INVOICE AMOUNT: \$** \_\_\_\_\_

**Cheques preferred**, payable to: **Roving ChessNuts**

Cheque attached \_\_\_\_\_ Credit Card #

Exp. Date: \_\_\_\_\_

If enrolling an additional child, please put registration forms together and issue one cheque or one card payment.



Watch for more photos from Mother's Day chess in the next issue of Chess Teasers



As the school year winds down, many scholastic players will be receiving Rating Recognition Certificates for reaching and maintaining the 800, 1000, 1200 and 1400 level of national Chess'n Math ratings during the 2017-18 chess season. The above six earned their certificates through both Saturday Knights Roving ChessNuts classes and participation in monthly open tournaments. Certificates are expected to be handed out during the rest of this month and at the two open scholastic tournaments next month - the Grade Championships on June 3 and the End of School Year Blast on June 24.

### Parents needed to help scholastic chess!

A non-profit scholastic chess society has been revised to further promote the benefits of chess for children and to offer the best opportunities to young competitive and recreational players.

To help this effort, parents with children involved in chess activities are needed to add their suggestions and opin-

ions to the efforts of the society.

Participation in the parental advisory group will not require attendance of meeting, but rather expressing yourself through online surveys and e-mail messages.

If you are interested, please send an e-mail to [rovingchessnuts@shaw.ca](mailto:rovingchessnuts@shaw.ca) expressing your interest.

## Grade Level Championships June 3, 2018

Greenfield Hall, 3803 114 Street, Edmonton • Sign-in 12:30 to 12:45 p.m.

Open to players in Grades 1 through 9. In Grades having more than 8 entrants with a wide-range of ratings, the competition will be divided by ratings into Open Section and Section B categories. Trophies and medals awarded in both sections with all players getting an award. Players, unless their school grade level has fewer than four players, will only compete against players from their own grade.

**Enter online or via e-mail:** Registration link at [www.rovingchessnuts.com](http://www.rovingchessnuts.com) or [rovingchessnuts@shaw.ca](mailto:rovingchessnuts@shaw.ca)

**Entry Fee:** \$25 (Second child same family \$20 per event)

Cheques for June 3 entries can be submitted through school programs, Roving ChessNuts classes, or at **Roving ChessNuts**, 12015 76 Street, Edmonton, T5B 2C9. Card payments can be phoned to 780-474-2318 weekdays, 8:30 to 4:30. Entering early and prepayment much appreciated as it makes for a better tournament - players can be placed in proper sections, players receive more publicity as their names appear in the registered players list posted at [www.rovingchessnuts.com](http://www.rovingchessnuts.com), shorter line-ups at sign-in, and helps organizers with provision of awards, draw prizes, and tournament souvenirs. **Any questions? Please contact Roving ChessNuts.**



**May 14 Update on this event:** At the Mother's Day tournament more players entered this event. Grades 3, 4 and 5 now have enough players to hold two-levels of competition each offering the same awards. The open section will have the higher rated players of that school grade plus any lower-rated players who want to challenge them. The second section will have the lower-rated players.

# GIANT CHECKMATE & FITNESS FUN CAMP



**Greenfield Hall, 3803 114 Street, Edmonton**

**Monday, August 27 to 31, 2018**

**8:30 to 5 p.m., Full or Half Days**

**Edmonton's biggest scholastic Chess Camp** will feature both chess learning and playing, including a national Chess'n Math-rated tournament with awards for full-week students, various levels of instructions from various instructors with junior chess leaders on hand to help younger beginners, games analysis, testing with certificates to be earned, a 24-page chess manual, and a camp souvenir!

**PLUS** - *Chess for a healthy and great brain and Fitness for a healthy and high performance body!* Up to two hours of each camp day will be devoted to physical fitness for various ages and sizes. There will even be some Commando Chess competitions with awards where a player will play a game chess and then perform a physical activity (running, jumping, ball throw, etc.), then repeat with another chess game and physical event. Children will also be given a manual on physical fitness and activities they can do at home with the family to promote physical and mental well-being through chess and physical activity.

**MORE FUN/PRIZES** - The final day of camp will offer a complimentary Pizza/Hot Dog Meal! There will be daily chess and fitness-related draw prizes all full-week participants are eligible to win!

**More details will be given in the May 15 issue of Chess Teasers newsletter**

To allow as many experienced and new chess players to participate in this event at Greenfield Hall which has the size and amenities (including playground and sports fields), we hope to attract a large number of participants and give the best price available for this camp.

At this time, we can relate that the maximum for a Full-Week daily 8-hour camp will be \$260 and for younger participants a Full-Week daily 4-hour camp will be \$145.

There will be the usual **15% discount** for second sibling from same family

There will be a **10% discount** on all fees for those prepaying within three weeks after final fees are set on June 1. Further discount available for larger families. We do not want any child to miss out, and will work with families to ensure their children benefit from our programs.

A refund policy will be in place for prepaid camp fees and deposits.

**To help us set the lowest prices and organize the best possible Chess and Fitness Camp please consider a \$50.00 deposit to reserve a spot in this event for your child or children**

**Deposit can be paid by cheque, card or cash at today's tournament or contacting us by phone, or at classes as instructors in school programs distribute enrollment forms and can accept cheques with return of forms**

**Mail or office visit: 12015 - 76 Street NW, Edmonton, AB T5B 2C9**

**780-474-2318, rovingchessnuts@shaw.ca • Forms and updates at [www.rovingchessnuts.com](http://www.rovingchessnuts.com)**



Roving ChessNuts