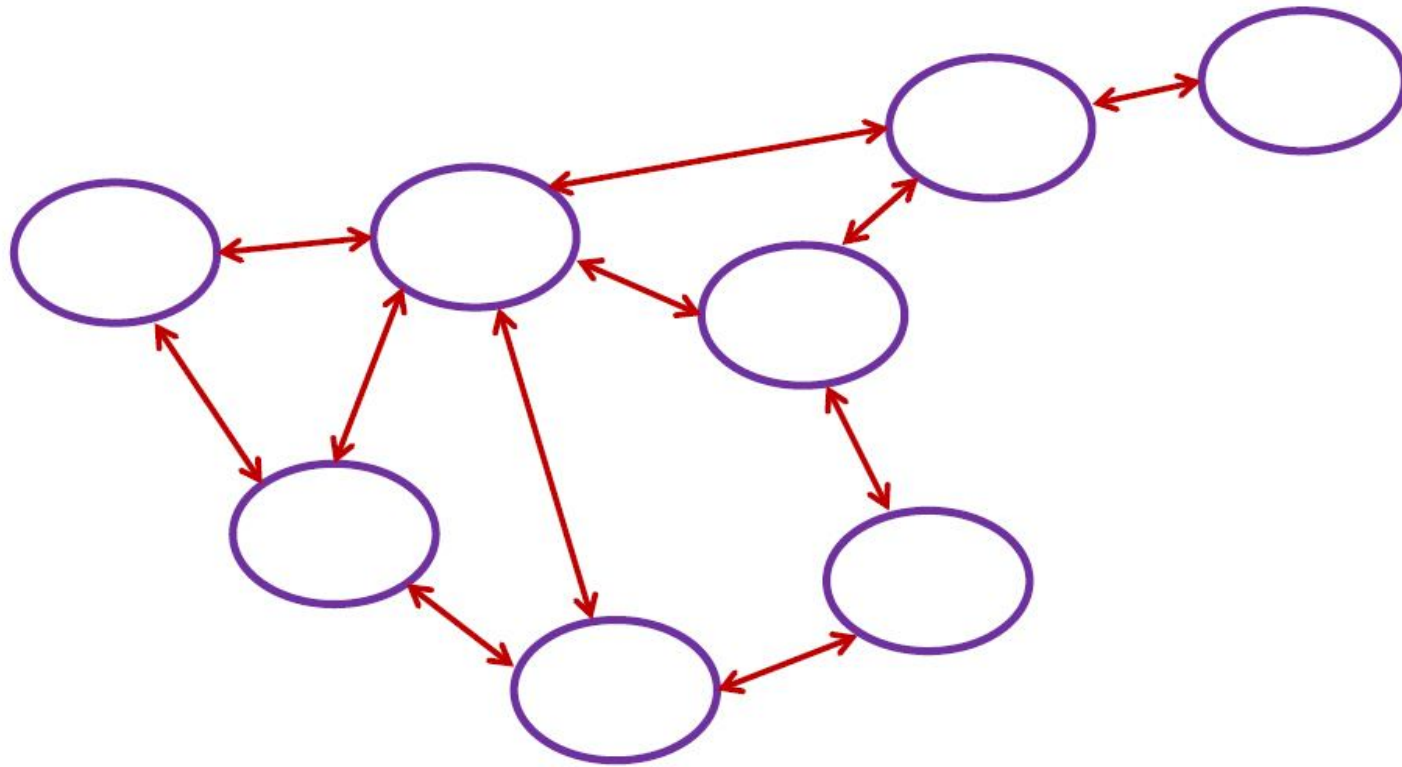
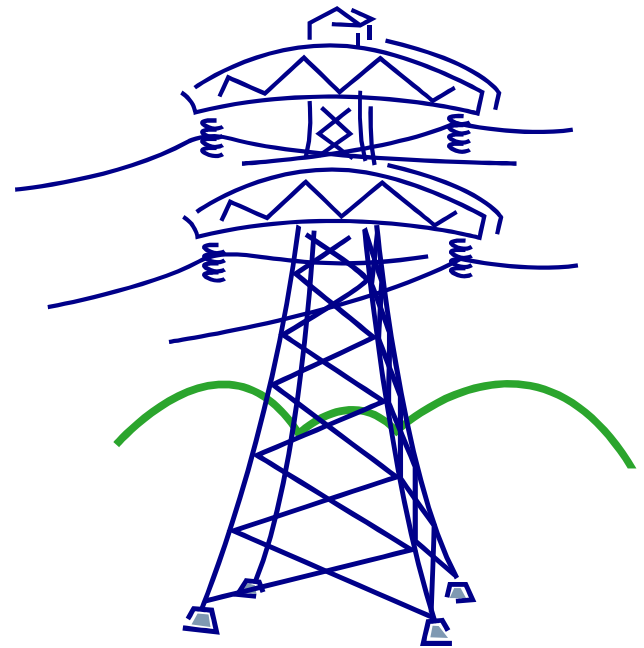


Transmission and NEEM Regions



Pipes



Transmission in MRN-NEEM

- MRN-NEEM is a pipe-and-bubble model
- MRN-NEEM does not co-optimize generation and transmission
 - MRN-NEEM will not add transmission to the model
 - Changes to transmission must be done manually
- MRN-NEEM will add/subtract generation and demand resources to meet load subject to economic, policy and **transmission constraints**

Therefore we may want to relax transmission constraints to approximate transmission optimization

EIPC Proposal

1. CRA performs initial MRN-NEEM run for each future starting with the Baseline Infrastructure
2. SSC can determine if transfer limits (“pipes”) should be adjusted based on their assessment of the model results
3. CRA re-runs MRN-NEEM with adjusted transfer limits as Sensitivity #1
4. SSC determines if initial or adjusted transfer limits should be used for remaining sensitivities based on a comparison of the results
5. EIPC will perform a high level transmission analysis of expanded transfer limits to provide a cost estimate

WG Assessment

- General MWG Consensus that using a sensitivity to adjust transfer capacities is appropriate
 - However, the EIPC approach could lead to the shifting of congestion to different interfaces and lead to non-optimal solutions
 - MWG needs more details about the EIPC approach before it can recommend how to implement it
- SPWG is recommending that the SSC reserve a transmission sensitivity for each future
 - EISPC has not yet agreed
 - Recognize that we may not need to use a transmission sensitivity for each and every future

Next Steps

- EIPC, EISPC and SSC will need to agree on implementation procedures
 - How will adjustments be agreed upon in an expeditious manner?
 - Over what time period will adjustments be implemented?
 - Will a transmission sensitivity be used for each future?
- Need to decide before 1st MRN-NEEM Future is run

Bubbles



NEEM Regions

- MWG NEEM Regions/Transmission subteam is reviewing NEEM regions with the assistance of the Planning Authorities
 - Expect some changes to NEEM regions
 - Considering whether NEEM regions are warranted (e.g. Canadian Maritimes)
- Target of Jan. 11 SSC Call for final NEEM region definitions

Modeling Working Group Progress Report

MWG Progress Report

MWG established 8 Modeling Data Subteams for review of the model inputs

- NEEM Regions/Transmission
- Environmental Policies
- Fuel and Emissions Prices
- Demand, Energy Efficiency and Demand Response
- Economic Assumptions/MRN
- Existing Generation
- New Generation
- Canada

MWVG Progress Report

- MWVG created guidelines for selecting data sources
 - Recent/relevant
 - Public
 - Unbiased
- Creating a centrally accessible document to contain all the modeling inputs and revisions
- SSC and Work Groups will have an opportunity to view the information and comment

MWVG Progress Report

- MWVG currently in data gathering mode
- Subteams are waiting on answers to questions submitted to CRA and EIPC
- Dec 14-15 Joint MWVG/SPWG meeting
 - Data sources
 - Ranges
 - Application to BAU