

# ANTIQUUE AUCTION

Located at Duwa's Auction Building, 1½ mi West of Wellman, IA on Hwy 22

Many items consigned from the Amana Colonies

**Saturday-Jan 19, 2019 - 9:00am**



**AMANA COLONIES WALNUT & PRIMITIVE FURNITURE - WOOTON PATENTED OAK**

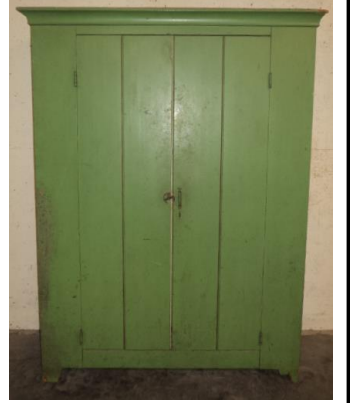
**QUEEN ANNE ROTARY DESK - FURNITURE:**

Amana Furniture: Pink pine 2 door wardrobe; 2 door lite blue wardrobe; Pine 1 dr wardrobe; Walnut 4 door cabinet; West Amana Post Office lock boxes (57ct); Green 2 door jelly cupboard; Grain ptd harvest table; 2 walnut dressers; Yellow chimney cabinet; Walnut tapered leg 1 & 2 drawer tables; Green harvest table; Small green 1 drawer table; Walnut 2 pedestal library table; Primitive pine cob box; Inlaid walnut sofa table; White ptd dry sink; Wainscot 2 door cupboard; Large blue & other assorted blanket chests; Shipping boxes - some w/stenciling & some w/paint; Green, Blue, white & primitive benches; Single beds & mattresses; Parlor/heating stoves: Round Oak Duplex, Fame, Pearl, & others; Homemade gun rack; Elder chairs; **Other furniture:** 7'6"x5'6" Primitive 4 door cabinet; Pine dry sink; Walnut gateleg table, Ash step back kitchen cupboard; Pine wash stand chest; Pine 2 door display cabinet; Assorted primitive ptd cabinets & shelf units; Mini blanket chest w/ hidden drawer; Columbia & oak table top phonographs; Stromberg Carlson double box wall phone; Oriental chest, coffee table, stools & room divider; White metal parlor tables & chairs; The Bartlett sewing table; Oak caned gliding rocker; Waterbury kitchen clock; Seth Thomas mantle clock; Pictures: Guardian Angel; Fruit; Wall hanging wooden shoe; 5-Chinese Swatow shell & cutting pictures; Arthur Singer prints

**AMANA COLONIES PRIMITIVES - PRIMITIVES - STONEWARE:**



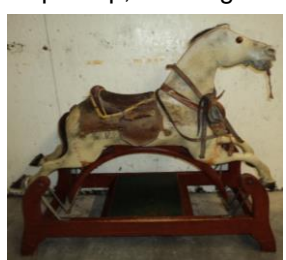
Amana Colonies primitives: Leather Fireman's bucket; Tin street lantern head-made by Bill Metz; 140lb, 100lb & Tiner's anvils; Lg tin handled cooker; Oak splint handled baskets; Wooden stenciled child's gliding / rocking horse; Wooden wash basket; Baskets; Morton Salt & other wooden barrels; ½ barrel; Copper handled kettles w/tin lining; 100# anvil; Small tiner's anvil; Green carpenter's tool chest; Bench vise; Cast iron lamp brackets; Flat Black Twill Amana Society Sampler; Document boxes; Burnkist box; Drying racks; German Wind-up tin toy man; Cast iron football player; W Amana Baseball uniform; Push-em up Jr marble game; 48 star flag-High Amana Post Office; Sheep Shearing W. Amana postcard; Amana postcards; Amana coupon books; Pocket knives; '74-'76 Amana silver coins; Leonard Haldy made SS wine siphon; Red /green sled; Red wheel barrow-missing side panel; Many garden tools; Cream cans; Enterprise fruit press; Slaw cutters; Child's tin bath tub; String of sleigh bells; Lg Hershey's Chocolate bin; Blatz beer bank; 1913 All Wool Taylor book/ scrap book; Foot warmers; Tinware: Coffee pots, ricer, stock pots, dippers, assorted lunch pails w/bails, buckets, utensils, etc; Wooden candy bucket; Galvanized wash tubs; Wolverine shoes; High top button ladies shoes; Vintage wooden sheep; Penny dolls; child's tin dishes; McLoughlin picture ABC blocks; Tin candle molds & holders; Tin fat lamp; Candle snuffer; Tin



wash tub; Copper pail; Large tin rabbit cookie cutter; Gray granite coffee pot; Shoe cobbler's step; 1901-05 & 1908 Illuftrierte Delt German books; Ker Wanderer Kalender mags; 1929 Amana Society calendar; Early 1900's German newspaper; German Church & Child's books; Oval Indian tin tray; Cilt Pure Can Sugar cardboard box; Blue calico & other fabric; Latch hook rugs; Carpets; Wool blankets; Many cloth sacks; Assorted linens; House Blessing-Der Herrist Mein Hirte; Pear Prestle print; American toy blocks;

**Stoneware:** Stoneware: #5 & #10 pickle crock Koverwate's, Reid Murdoch & Co-pickle store display crock top-fits 10 gal crock; 2 gal J Heiser Buffalo NY brown crock; 1 gal adv jugs: The Creamery Package Mfg Co-Chicago, David Morrison Wines & Liquors-East Boston, E.E. Gray Co Wholesale Grogoers-Boston, The Western Pottery Do-Denver, R.,H. Macy & Co-New York & Mint Malt Crown; John Sexton & Co-Chicago 1 gal canning jar; Buffalo NY-2 gal brown crock; Reed & Tyerman-Chicago IL-butter jar w/ bail; 2, 8, 10 & 20 gal Western crocks; Ausland Lumber Co-Curlew IA beater jar; Ideal Salt Feeder Model C-Morrison MN; McComb 1 gal crock; 2 gal crocks; Canning jars; Blue butter crock & coffee jar; Yellowware blue band bowl, cream pitcher & mug; Blue, brown & blue/white stoneware pitchers; Blue/brown spongeware bowls; Mini blue bowls; English floral blue candle holder; Stoneware spittoon & foot warmer; Assorted jugs; Blue milk pitcher; Milk bowls; **Other primitives:** 19" JC Harrington -Oskaloosa, IA dinner bell w/ yoke; 2-18" - #3 Hillsboro, OH dinner bells; Large collection of Cast iron kettles, pails & skillets; Cast iron Sterling Slicer #20 meat slicer; Watling Scale Co-Coin operated scales; Toledo counter top scales; Counter top balance scales; 50# scale weights; Sipe double wheel hog oiler; Assorted hog oilers w/damage & parts

oilers; Early Truck/ car folding hoods; Chevy, Ford & IH tail gates; Ford wheel cover; Back Phillips 66 bulk truck door w/ counter; Phillips 66 & other gas cans; Black Smith's forge; Porcelain light reflectors; Early tractor steering wheels; Link Belt sign; Galvanized rinse tub; Starett surveyor's telescope; Porcelain sign-Mayer's Milwaukee Custom made Shoes; Cast iron RR crossing sign; Santa Fe RR nails; Rough Porcelain Standard Oil Co. sign; Ed's Baby Pig & Lamb cream can feeder; Collection of Griswold & other waffle irons; Cast iron stove pipe registers; Large red cast iron ship rope tie; Planter Jr No 4 corn planter; Cast iron 4 sided glass ball reflector; 23½" cone shaped fence finial; 40" cast iron building window sill; Pat. 1909 Rotating butcher's counter top meat holder; Windmill weights: Star, 16" short tail horse, Monitor vanless 26lb rock weight, small ball w/handle; Kerosene construction fire flare; Stanley 93 level; Coal pick axe; Wood planes; Wooden rake; Log roller; Dehorning saw; Weather vanes: 10½" horse, 7½" pig, 5½" cow, tin horse & lightning rod weather vane; Brass directional wind vane; Grave markers; Hohner's accordion; 30" Cast iron table; Cast iron widow porch rails; Gray & Davis ship lamp; Building star; Brass & copper fire hose spickets; Winchester flashlight; Adlake 4 lens reflector; Simmons Hdwe hand pump; Deere Mansur corn planter lid; Champion & other cast iron imp seat; 10½" CI round seat; CI Superior tool box; Winchester flashlight; 6½" post vise; Wooden chicken coop; Cast iron shelf brackets; Sprinkling cans; Copper boiler; Large wooden bowls; Sausage stuffers; Cast iron coffee pots; Granite dish pans & coffee pots; Tins: Assorted Sexton Pickling Spice, National's Best Blend Coffee, Blue Boy Fruits & others; Cherry pitters; Spurs; Harness safety pins; Baltimore & Fox Deluxe beer trays; Armadillo basket; Bird cage w/stand; Voting box; Candy boxes; Poll-Parrot party horns; Indian & other cork rifles; Dwt Ranch, Super Defense, Kilcore & other cap/ clicker pistols; Viewing cards; Ice tongs; Diamond Brand wooden box; Hanging gas lamp; Carbide lamps; Brass carriage lamps; Small IA pennant; Drink Coca Cola thermometer; Tin floor model butter churn; 5 gal glass jars-1 w/crate; Lg wooden paper cutter; Eversharp top lead dispenser; 666, Red Cross & Bunte cough drops in orig pkgs; Metal shaving mirror w/cup & brush; Shaker window sill candle holders; Polaroid camera; Cigar



& tobacco tins; Aladdin mantles; MacBeth #50 chimneys; Fliteway sled; Radio Flyer child's wagon; 1943 All Star Baseball game; Child's vintage walker/strollers; Kiddie Kar scooter; Wooden Station Wagon child's wagon; Dixon pencils; Sheffield steak knives; Sad & coal irons; Tinker toys; Quilts: Fan, postage stamp version & others

**IOWA CITY GLASS - GLASSWARE - COLLECTION OF FIESTA DINNERWARE - ADVERTISING** Iowa City Glass: Horse, rabbit & cat goblet; Alhambra sugar w/lid; Keota melon 4 piece table set; Sage goblet; Keota swirl nappy; Elaine plate; Beehive platter & others; Child's mugs & animal motto plates; Stork & Sheraton pieces; Ironstone pitcher/bowl; Ironstone pitchers; Van Briggle: Aqua candle holders, Moon vase, cream pitcher, floral vase, Rose bud vase, Double vase; Van Briggle black pitcher; German Gnome tureen; German Max Roseler vase & bud vase; L.K. Lazarus liquor dispenser-Meyer Silverstein; Limoges Gilbert signed Turkey platter; Borden & assorted other milk bottles; Farmer's Coop-Winterset, IA cream pitcher; Murano glass Squirrel & bird; Baltimore Chewing Gum glass canister; Large collection of Fiesta dinnerware-plates, cups, saucers, tea pot, bowls, cr/sugars, etc; Spoon rests; Salts; Glass Dazey #4 butter churn; Czech glass vases; Pink depression pieces; Pyrex Blue/ white & green ivy nesting bowl sets; Assorted brown, blue & clear bottles; Medicine bottles; Bear cookie jar; Jadeite vases; Pr of cast base lamps **Adv:** Cast iron Irish pig of prosperity bank w/ Leprechaun; Phillips 66 banks; Benbow Coal Co-Ft Madison towel holder; Greater Peoria IL-Lodge Moose pict/mirror; Books: 1975 reprint of 1875 Illustrated Historical Atlas of IA; 1936 IA-I Remember, I Remember; 1963

The Annuals of IA Vol I; Grant Wood illus. Farm on the Hills; Metal pulleys from N English Elevator Store; Plank seed sack; Souv. of Lone Tree glass hat; Magazines: '20's Popular Mech, 1911 Youths Companion **OPEN HOUSE:** Fri - Jan 18<sup>th</sup> Noon-7pm. **ORDER OF SALE:** Prim & glassware. 2<sup>nd</sup> ring w/primitives, tools, rough furniture, etc 12:00 noon-showcase items, Keota/Iowa City glass 1:00pm-Furniture.



## DUWA'S AUCTION SERVICE LLC

**Auctioneers: Dwight Duwa 319-646-6775 Jeff Wille**  
or ck w/ ID

Lunch-Liberty Hill Catering

**Web: duwasauktion.com**

Not responsible for accidents or theft

**Terms: Cash**

