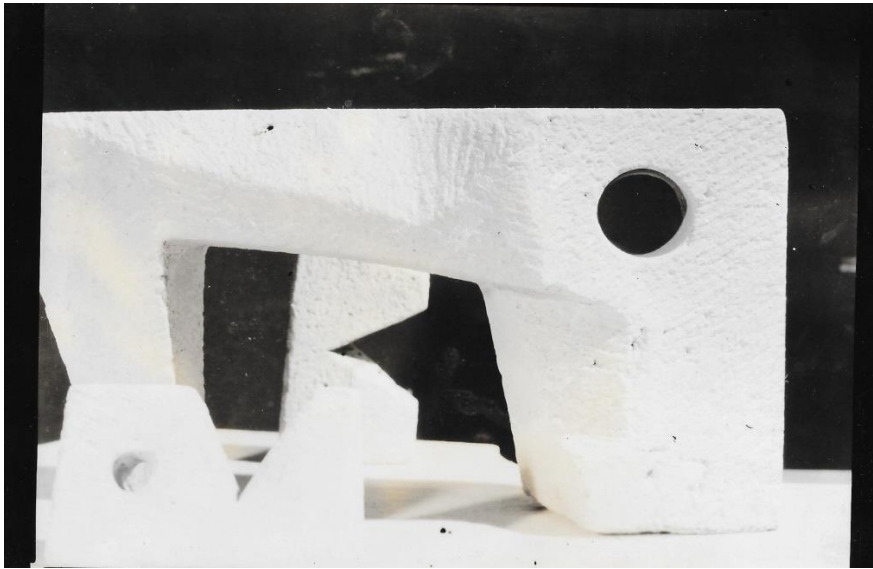
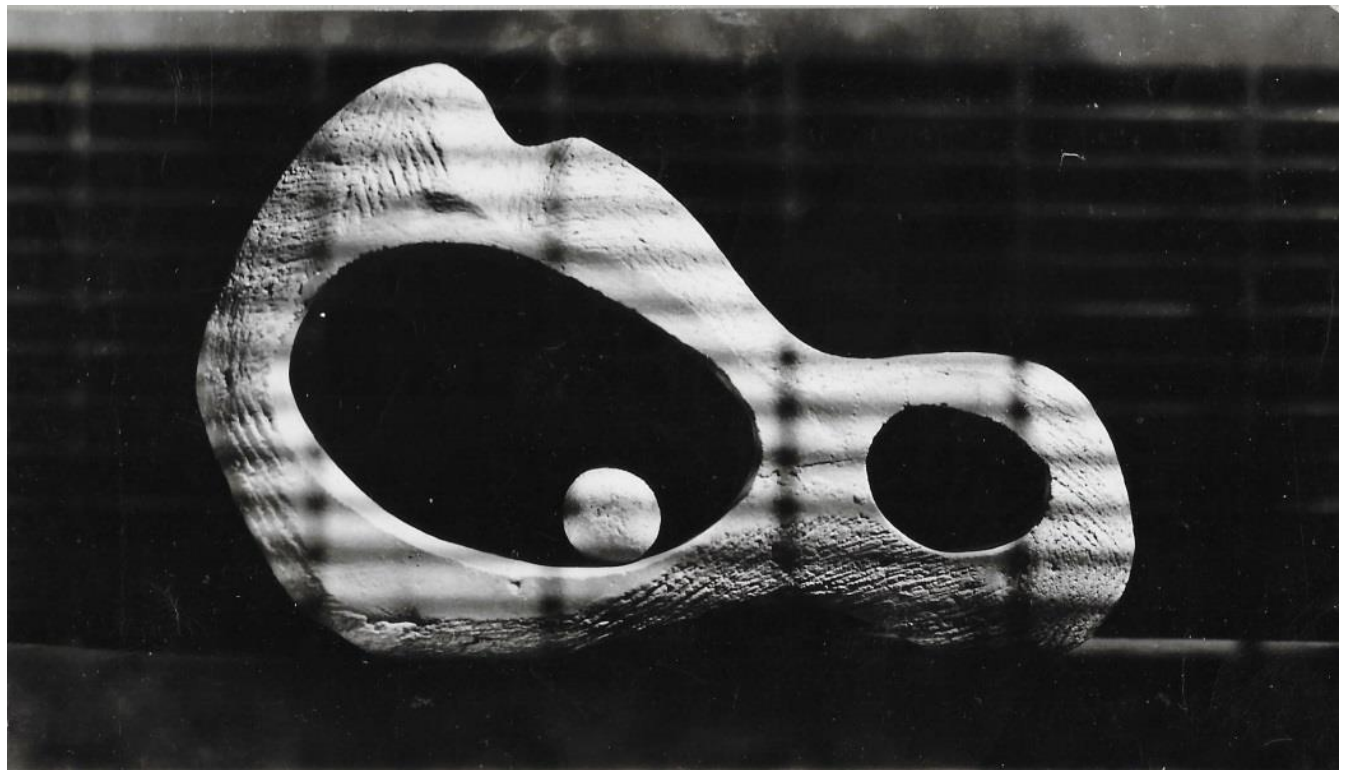
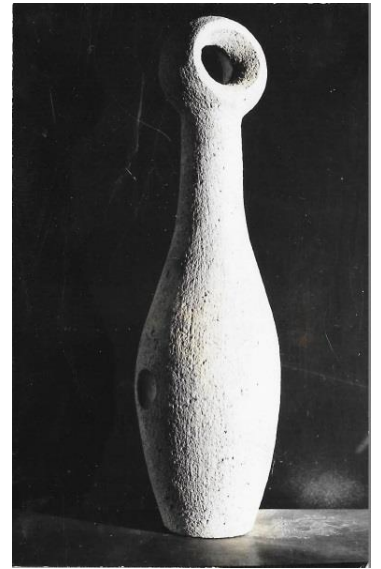


TETSUO TAKAYANAGI

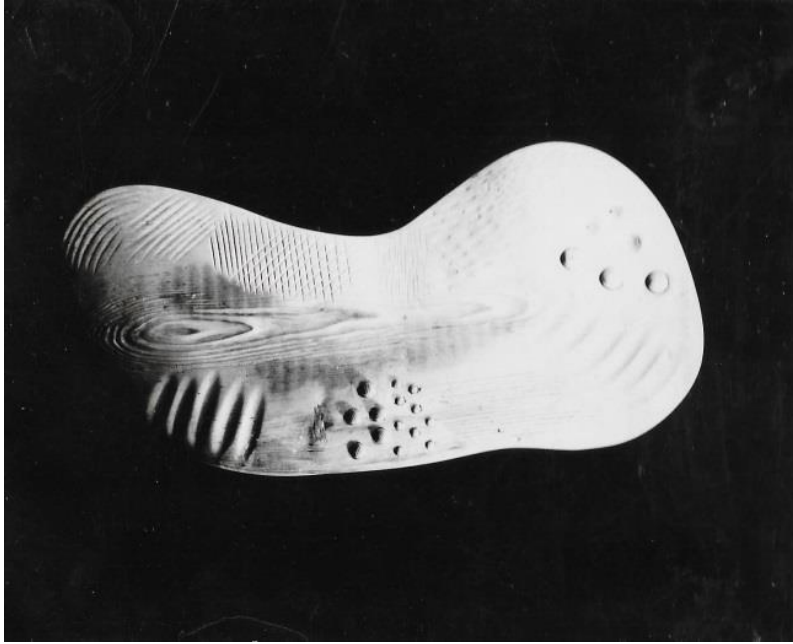
Berkeley, California 1921 – 2018 Auburndale, Massachusetts



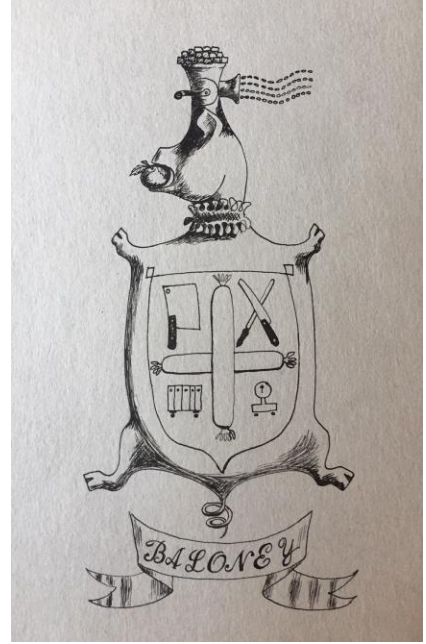
Foundation 1 Sculptures, Class of Alexander Archipenko, 1946-47



Foundation 2 Sculpture, Class of Hugo Weber, 1947



Hand Sculpture, Basic Workshop, Class of John Walley, 1947



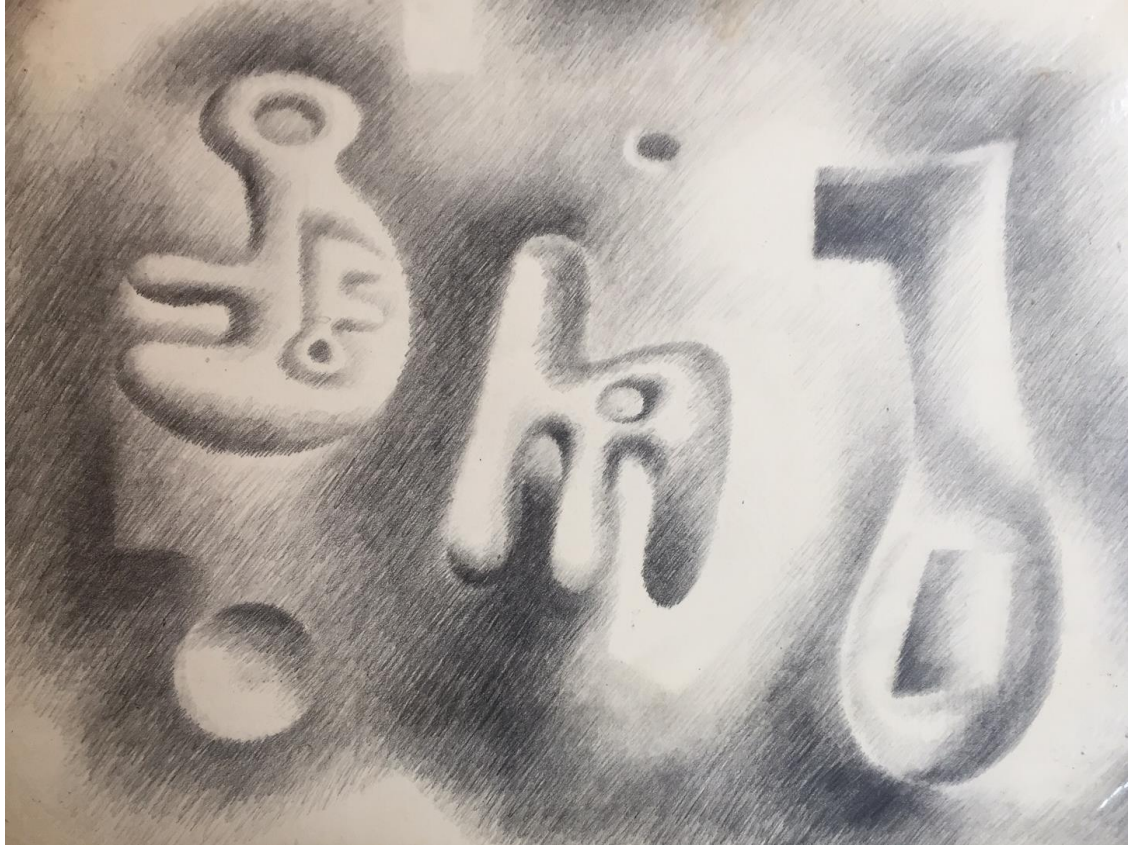
To Create a Trade Symbol, Subject: Butcher
Class of Michael Higgins, 1947



A Composition through Collage, Visual Design Class of Elsa Kula, 1947



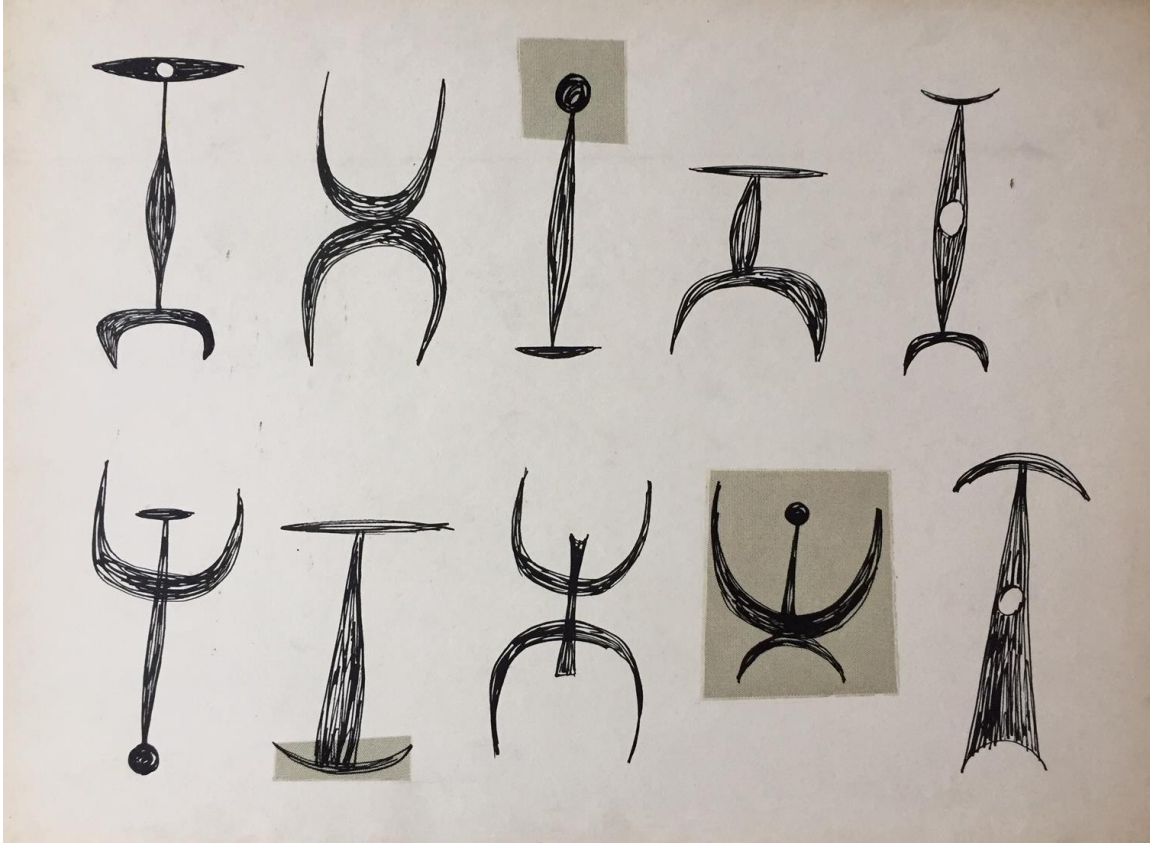
Double Exposure, Class of Ferenc Berko, 1947



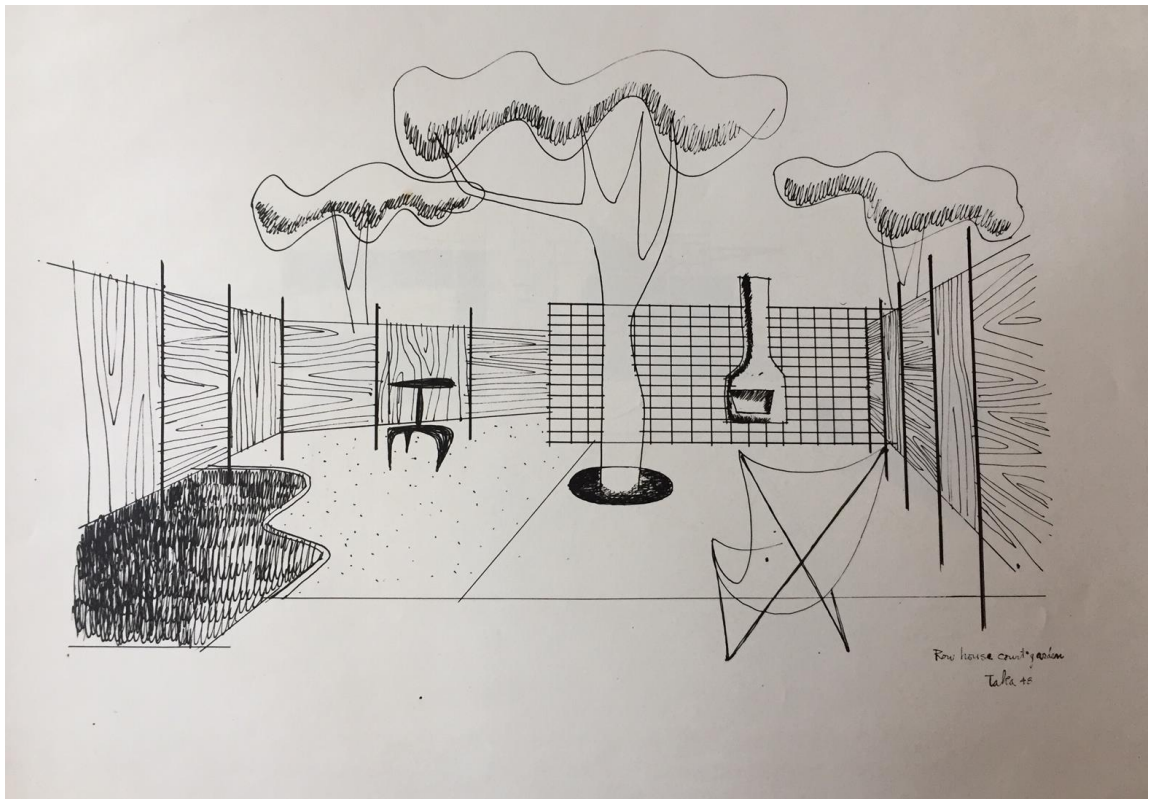
Semester One Drawing, Class of Richard Filipowski, c1947



To Create a Composition Using a Monoprint Technique, Using Printer's Ink and Roller
Visual Design Class of Richard Filipowski, 1948



To Create a Number of Abstract Forms, Visual Design Class of Richard Filipowski, 1947

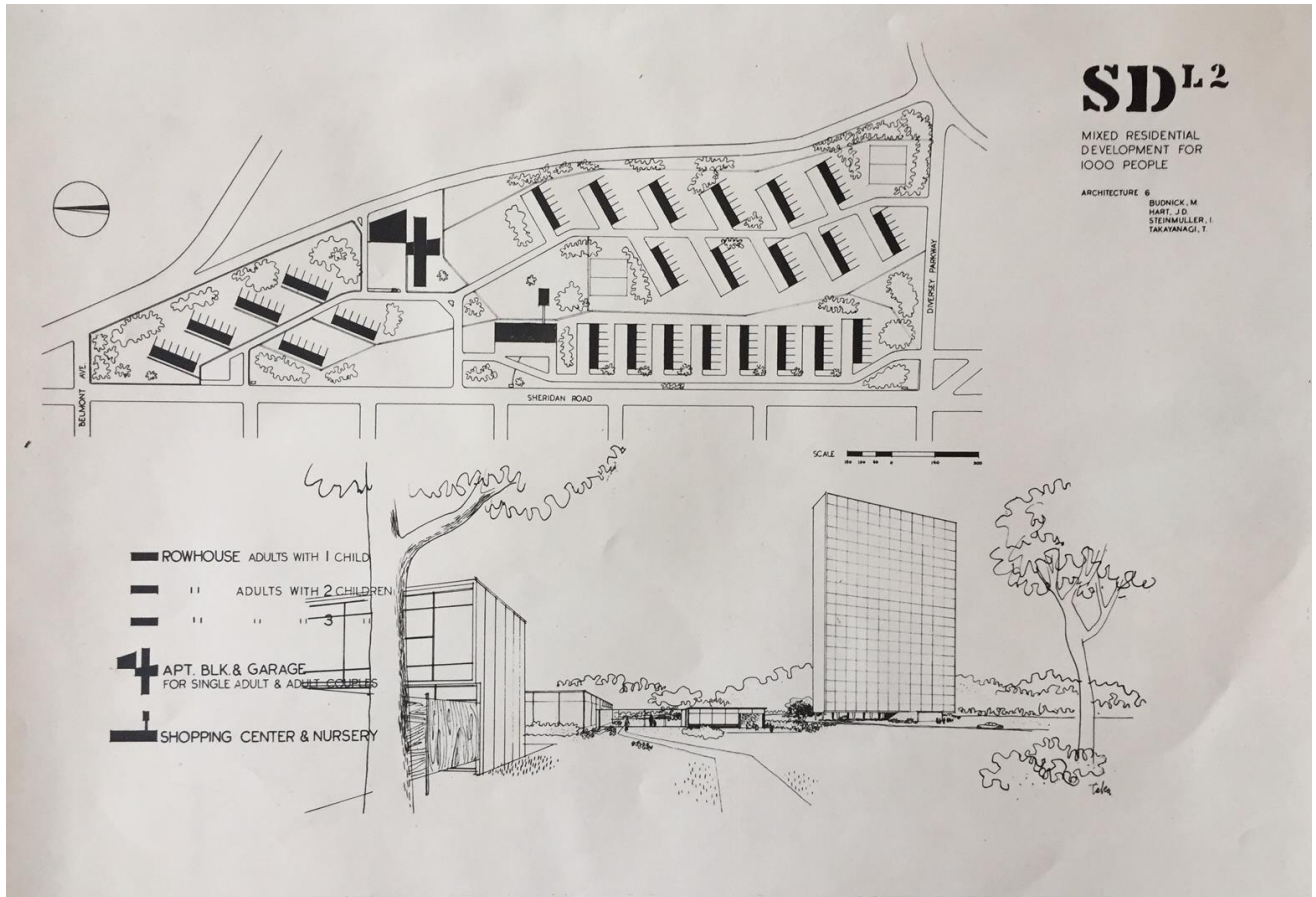


Row House Project, Garden Perspective, Pen on Paper, Summer 1948



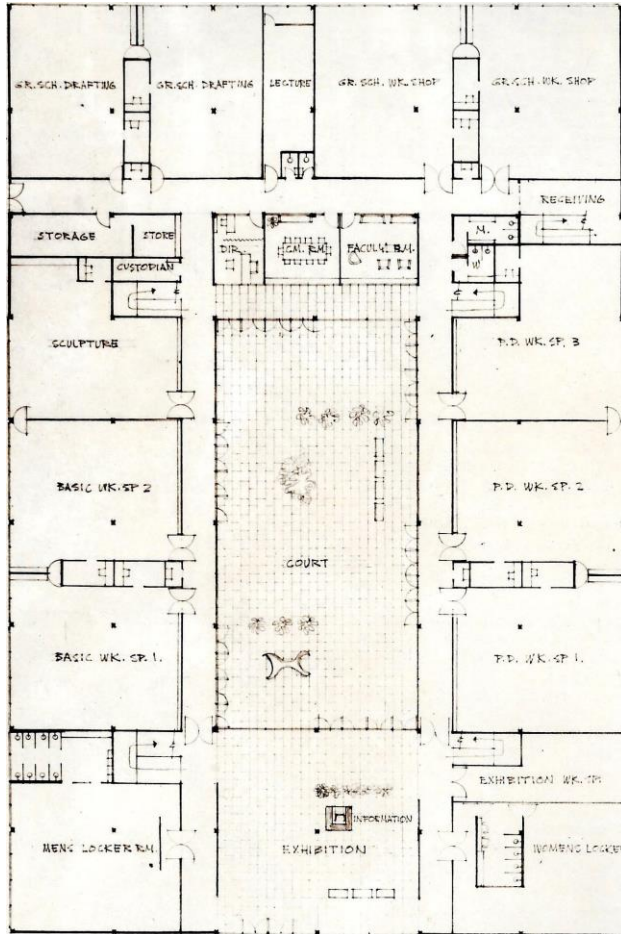
Perspective Rendering, Residential Development, 1950

Lincoln Park Project, a mixed residential development for 1,000 people, 1948
Group Project Members: Mickey Budnick, J.D. Hart, Iris Steinmuller, Tetsuo Takayanagi

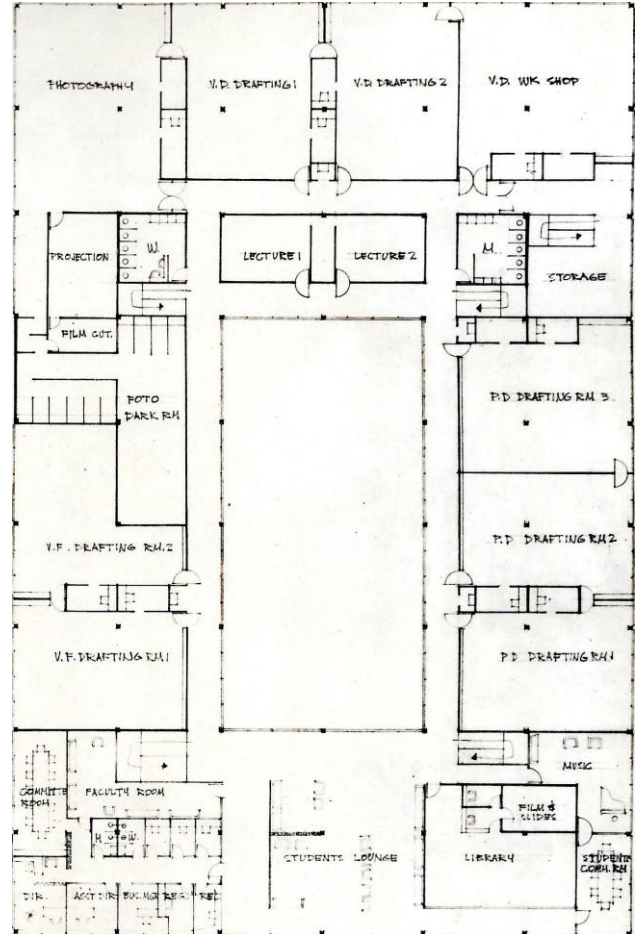


Lincoln Park Project Study Model, 1948; Tetsuo Takayanagi on the right

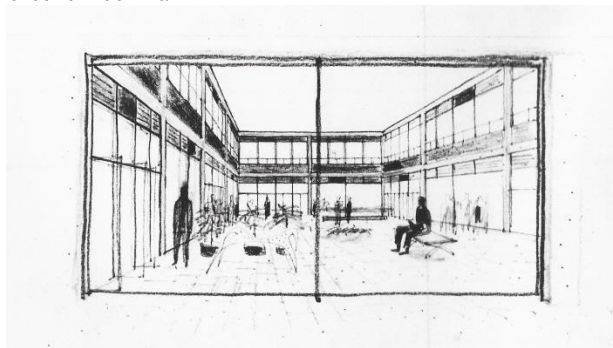
Institute of Design Building for the IIT Campus, Fall 1949



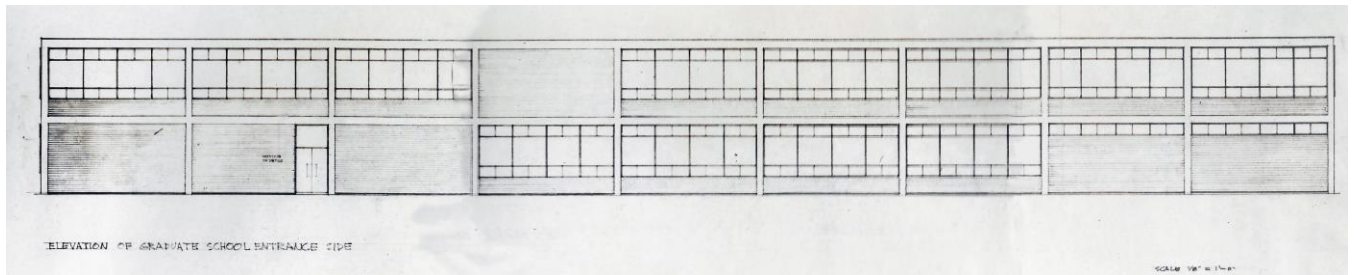
Ground Floor Plan



Second Floor Plan



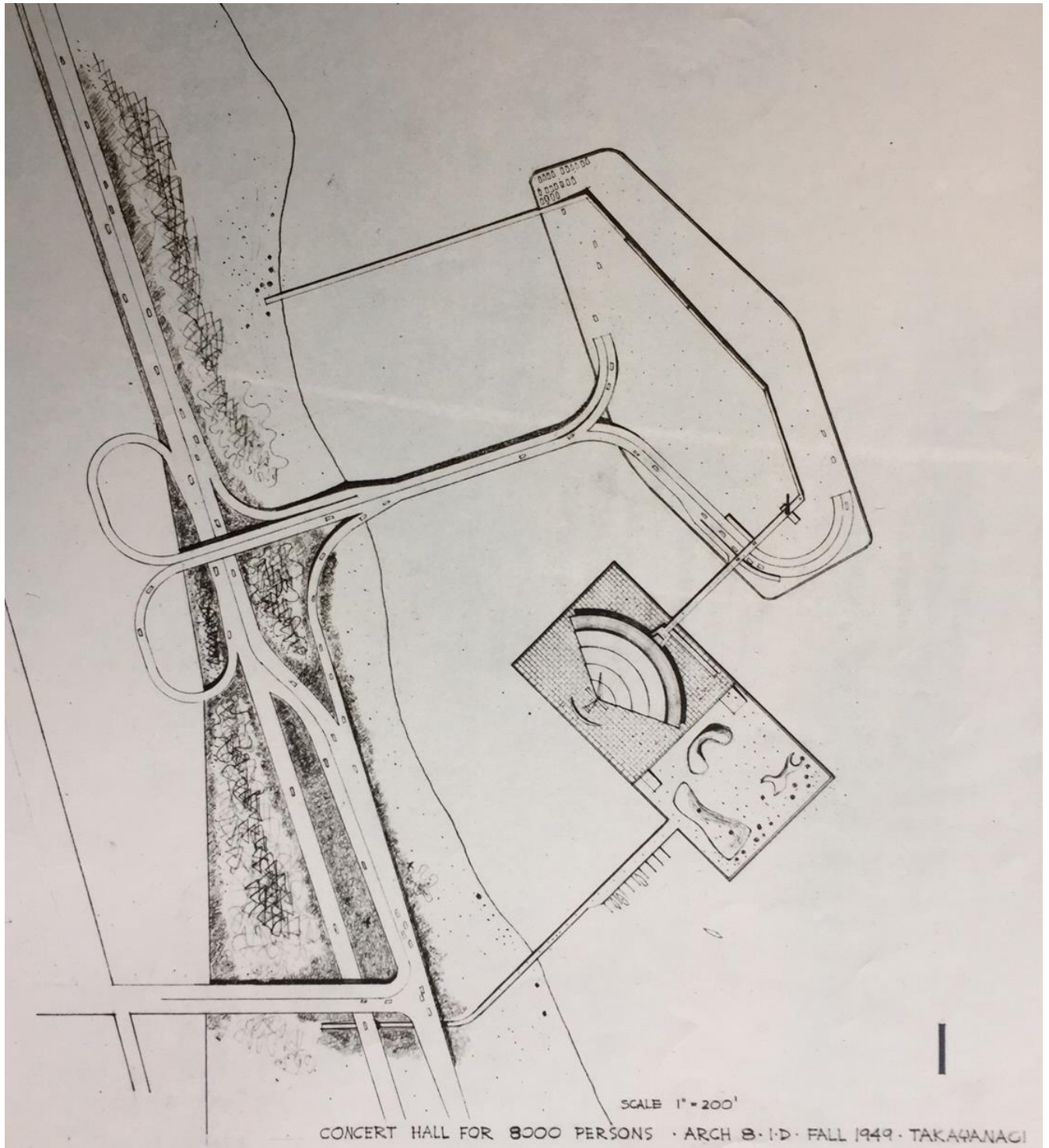
Courtyard Perspective, 48 x 96 feet space



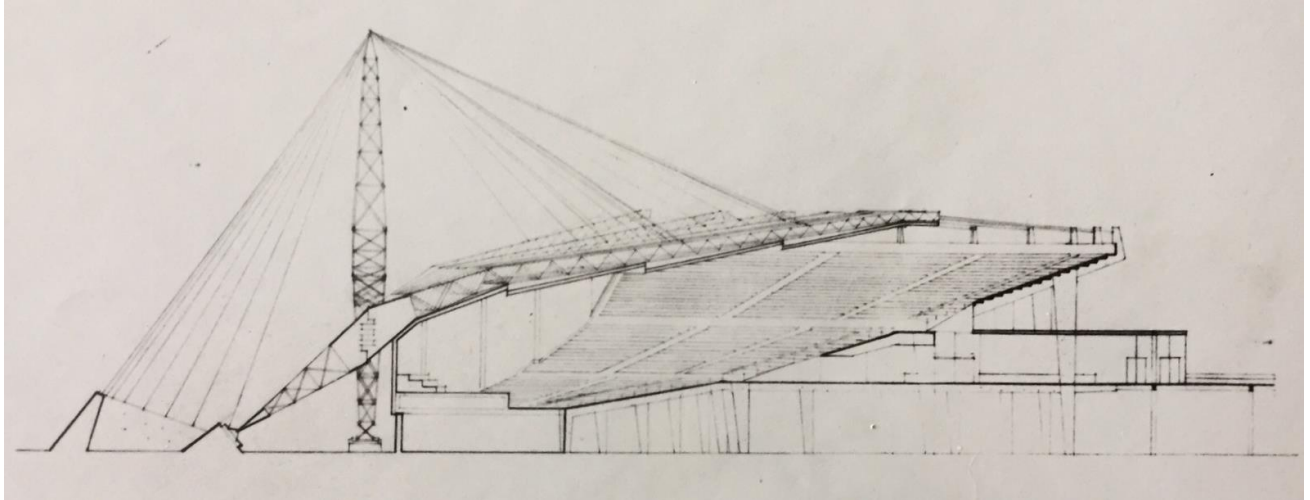
Elevation with Graduate School Entrance

SCALE 1/8" = 1'-0"

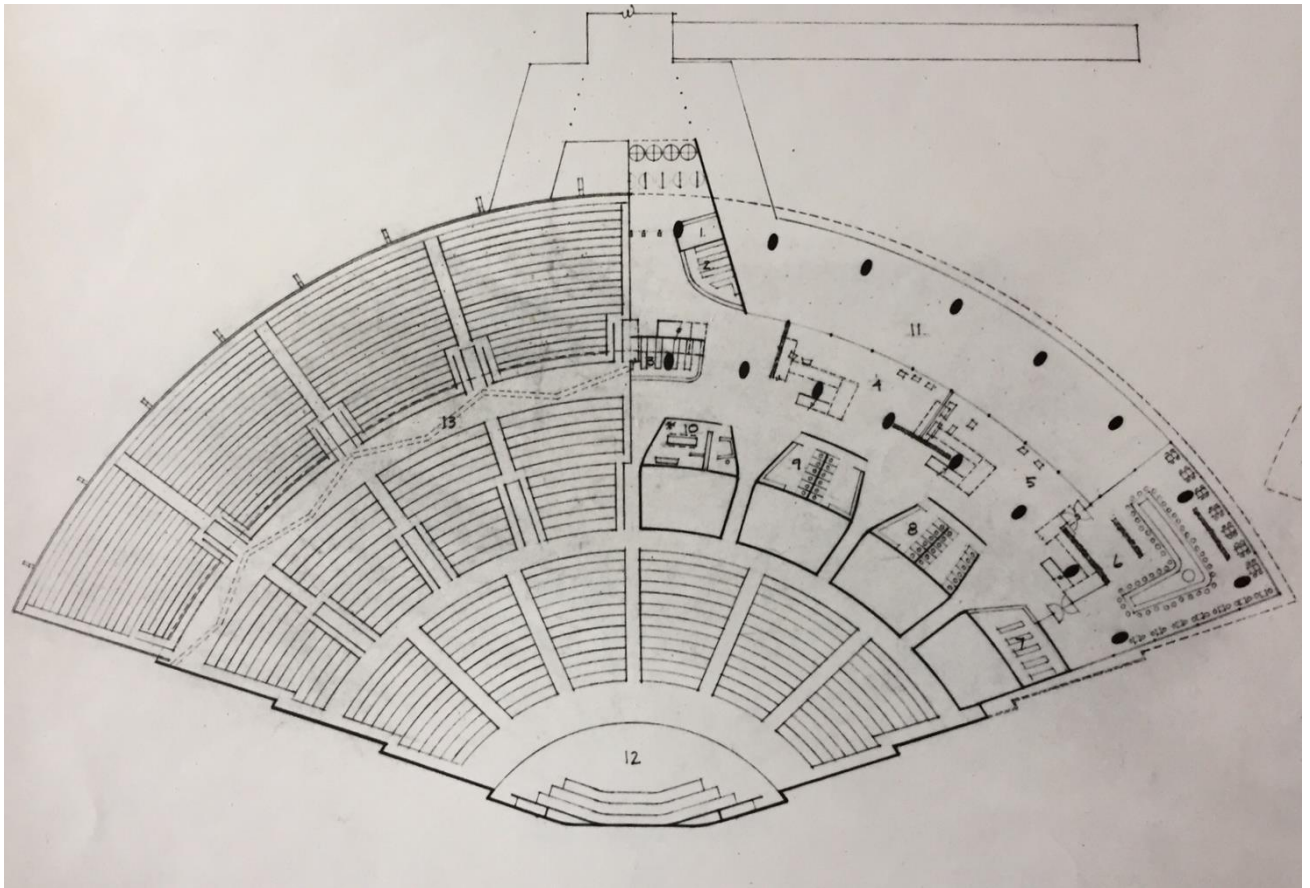
Concert Hall for 8,000 persons, to be built on landfill north of 31st Street, Chicago, Fall 1949



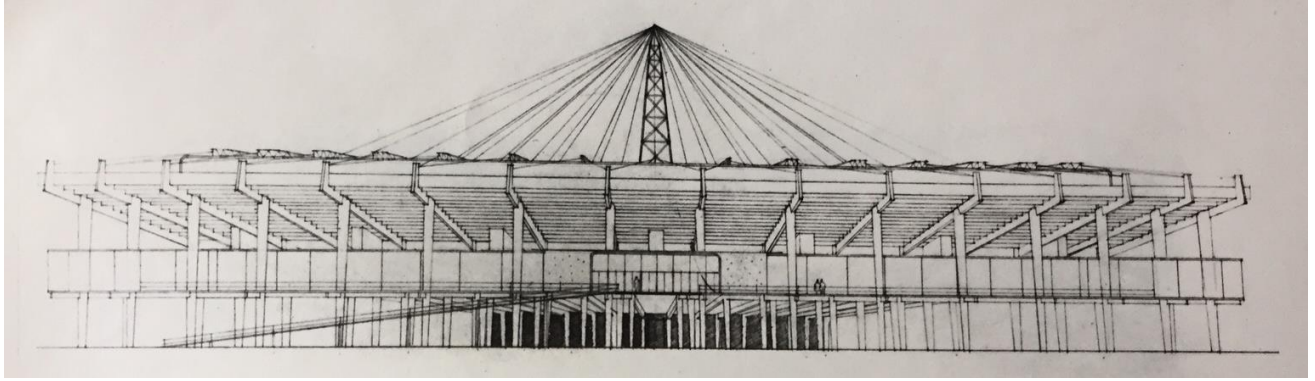
Site Plan, Pedestrian access at 31st Street with parking island north of Concert Hall and Park



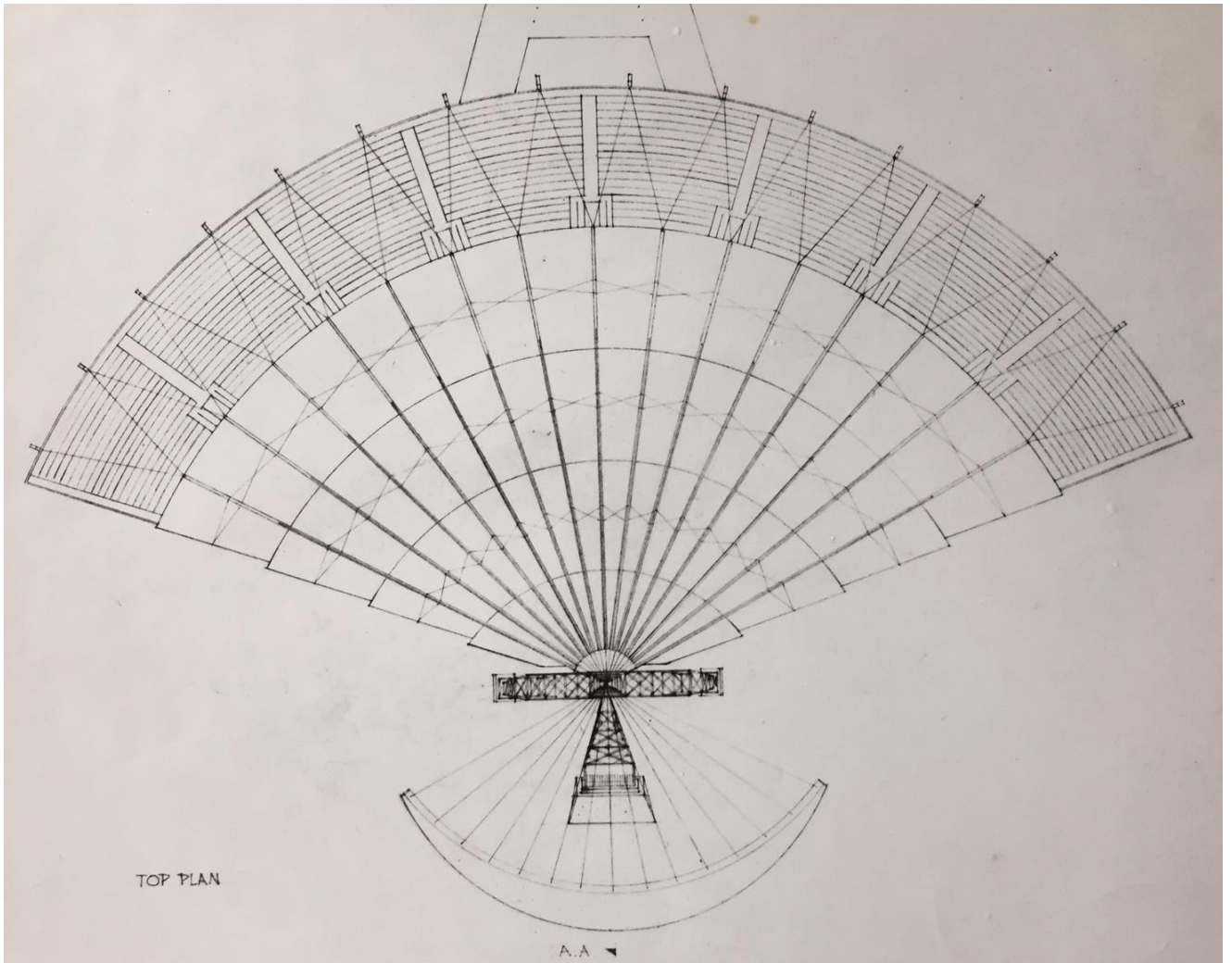
Section



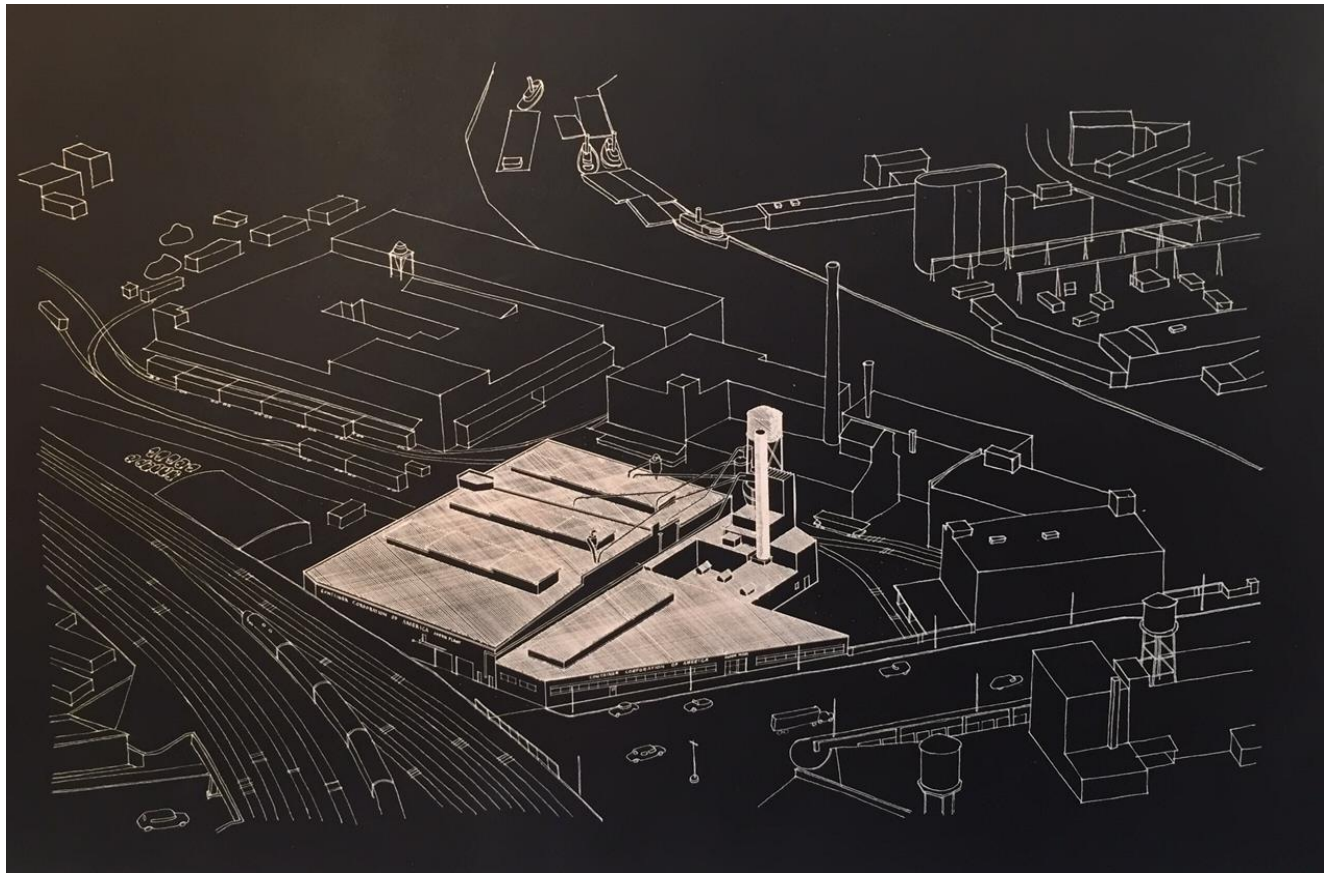
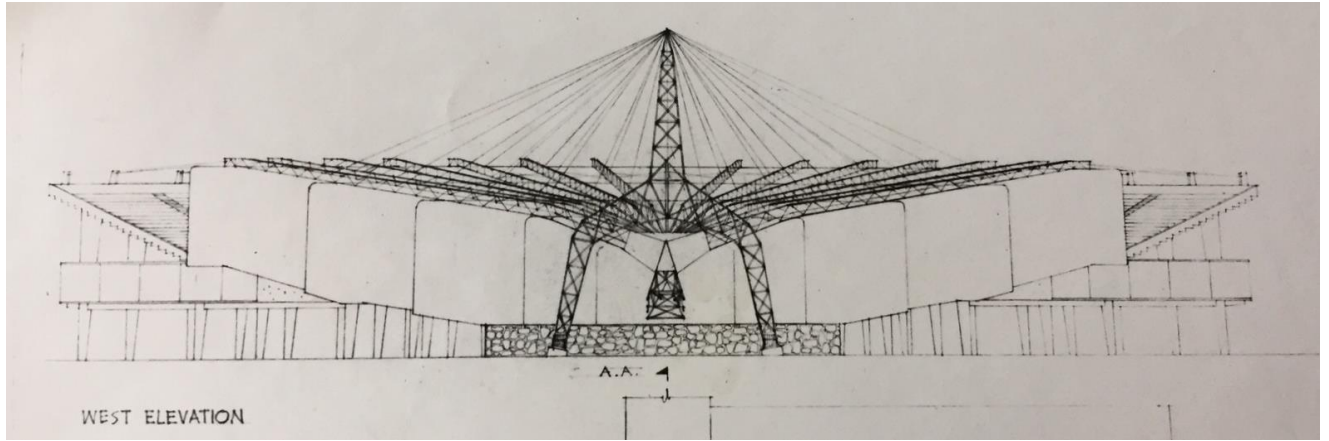
Floor Plan



Elevation



Roof Plan



Container Corporation of America, Chicago, Aerial View, c1948