

## Wobble Stick



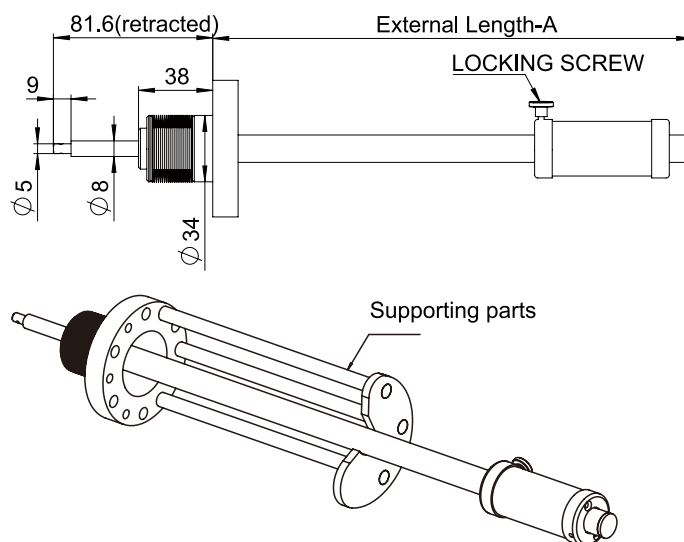
This Wobble Stick combines edge welded bellows and magnetic coupling technologies, enable the inner 8mm shaft moves linear and rotary and at the same time achieve the tilt range up to 20 degree.

With NdFeB permanent magnet, the devices have max 0.8N.m Torque and Axial Thrust is 60N.

Extra supporting Frame is available to hold the shaft when standby.

### Specification

- ✓ Magnetically Coupled Linear and Rotary Motion
- ✓ Material: SS 316/ NdFeB Magnet
- ✓ Bakeable to 150°C with External Magnets
- ✓ 8mm Hollow Shaft Probe
- ✓ UHV Rated to  $10^{-11}$  mbar
- ✓ High Torque & Stiffness
- ✓ Mounted in any Orientation
- ✓ Position Lock



| Flange OD |      | Travel Length | External Length-A | Tilt (°) | Weight (Kg) | Part Number |
|-----------|------|---------------|-------------------|----------|-------------|-------------|
| mm        | inch |               |                   |          |             |             |
| 70        | 2.75 | 150           | 246               | 20       | 0.8         | WS150       |
|           |      | 250           | 346               | 20       | 0.9         | WS250       |
|           |      | 350           | 446               | 20       | 1.0         | WS350       |