



NPSA / RCRA
Combined Series
Amendment to SI's
2024 WEDNESDAY NIGHT SERIES
June 5 – August 21, 2024



1. Rules

- a. Series 2 – NPSA Side: NPSA standard 2024 Wednesday night series rules shall apply, except as modified here-in.
- b. Series 3 – RCRA Side: RCRA standard 2024 Wednesday night series rules shall apply, except as modified here-in

2. Rendezvous

- a. First warning will be at 1845 hours unless race is postponed.
- b. Series 2 – NPSA: Vicinity of Penwood Channel R “6”. Race Committee shall be provided by NPSA
- c. Series 3 – RCRA: At mark RCRA “A”. Race Committee shall be provided by RCRA.

3. Courses & Marks

- a. Series 2 – NPSA: See attached
- b. Series 3 – RCRA: See attached

4. The Start

- a. Series 2 – NPSA: Between the Committee boat and Penwood Channel R “6”.
- b. Series 3 – RCRA: Between the Committee boat and RCRA “A”

5. Signals

- a. Standard signal sequence in the SI's shall be used with the exception of the start times as follows:
Spin Fleet 18:50 START
Non-Spin 18:55 START

6. The Finish

- a. Series 2 – NPSA: Between the Committee boat and nearby Government mark.
- b. Series 3 – RCRA: Between the Committee boat and mark RCRA “A”

7. Scoring

- a. Series 2: PHRF (TOD) Ratings shall be used for all boats
- b. Series 3: PHRF (TOD) Ratings shall be used for all boats

8. Headsails (non-spin class)

- a. **For Non-spin class only**, RRS 50.1, last sentence, is modified as follows: However, only one mainsail and, except when changing, only one headsail shall be carried set at a time.

SERIES 2 - NPSA COURSES FOR JOINT SERIES

	Wind	Class	Course Marks						Rounding	Distance
A	N	Spin	PW6	PW12	BC2B	PW6			Starboard	4.59
	N	NonSpin	PW6	PW12	BC4	PW6			Starboard	3.56
B	N	Spin	PW6	PW12	BC4	BC6	PW6		Starboard	3.67
	N	NonSpin	PW6	PW12	BC4	BC6	PW6		Starboard	3.67
C	N	Spin	PW6	PW12	BC6	PW12	BC4	PW6	Starboard	6.34
	N	NonSpin	PW6	PW12	BC6	PW12	BC4	PW6	Starboard	6.34
D	E	Spin	PW6	CRAIG HILL LIGHT	PW6				Starboard	5.94
	E	NonSpin	PW6	CRAIG HILL LIGHT	PW6				Starboard	5.94
E	E	Spin	PW6	BC6	BC8	PW8	PW6		Starboard	3.22
	E	NonSpin	PW6	BC6	BC8	PW8	PW6		Starboard	3.22
F	SE	Spin	PW6	BC2B	BC14	PW6			Starboard	6.9
	SE	NonSpin	PW6	BC4	BC14	PW6			Starboard	5.74
G	SE	Spin	PW6	CHU26	PW12	PW6			Port	5.84
	SE	NonSpin	PW6	BC2B	PW12	PW6			Port	4.59
H	SE	Spin	PW6	BC2B	PW6				Port	3.02
	SE	NonSpin	PW6	BC2B	PW6				Port	3.02
I	S	Spin	PW6	BC4	PW12	BC4	PW12	PW6	Port	7
	S	NonSpin	PW6	BC6	PW12	BC6	PW12	PW6	Port	5.56
J	S	Spin	PW6	BC4	BC6	PW12	PW6		Starboard	3.79
	S	NonSpin	PW6	BC4	BC6	PW12	PW6		Starboard	3.79
K	S	Spin	PW6	BC6	CHU26	PW12	PW6		Port	5.94
	S	NonSpin	PW6	BC6	BC2B	PW12	PW6		Port	5.18
L	W	Spin	PW6	BC12	BC4	PW6			Port	5.24
	W	NonSpin	PW6	BC8	BC4	PW6			Port	3.77
M	W	Spin	PW6	BC14	BC4	PW12	PW6		Port	7.4
	W	NonSpin	PW6	BC12	BC4	PW12	PW6		Port	6.9
N	W	Spin	PW6	BC14	PW8	PW6			Starboard	4.31
	W	NonSpin	PW6	BC14	PW8	PW6			Starboard	4.31

NPSA Course Mark Definitions

Mark Designation	Mark Description
PW14	Penwood Wharf Channel NUN "14"
PW12	Penwood Wharf Channel NUN "12"
JAS Pt.	Near South end of Penwood Wharf
ORB2	Old Road Bay light "2" (Sunken Island)
PW8	Penwood Wharf Channel NUN "8"
PW7	Penwood Wharf Channel Can "7"
PW6	Penwood Wharf Channel Nun "6"
PW5	Penwood Wharf Channel Can "5"
PW3	Penwood Wharf Channel Can "3"
BC2B	Brewerton Channel Lighted Buoy "2B" QR
BC4	Brewerton Channel Lighted Buoy "4" FL R 2.5s
BC6	Brewerton Channel Lighted Buoy "6" FL R 4s
BC8	Brewerton Channel Lighted Buoy "8" FL R 4s
BC11	Brewerton Channel Lighted Buoy "11" FL G 6s
BC12	Brewerton Channel Lighted Buoy "12" FL R 6s
BC14	Brewerton Channel Lighted Buoy "14" QR
OP2	Sparrows Point Ore Pier Channel NUN "2"
OP4	Sparrows Point Ore Pier Channel NUN "4"
Craighill	Lower Craighill Channel Range Front (lighthouse)
BCE10	Brewerton Extension Channel Lighted Buoy "10" FL R 2.5s
RCRA Mark	RCRA Private Mark Southeast of White Rocks
CHU23	Craighill Channel Upper Range Lighted Buoy "23" FL G 4s
CHU25	Craighill Channel Upper Range Lighted Buoy "25" Q G
CHU26	Craighill Channel Upper Range Lighted Buoy "26" FL R 6s
N2	Stony Creek Entrance Nun "2"

NPSA Racing Marks Distance Matrix

Marks	PW12	JASPT	ORB2	PW8	PW7	PW6	PW5	PW3	BC2B	BC4	BC6	BC8	BC12	BC14	OP2	OP4	Craig	BCE10	CHU26
PW12		0.34	0.40	0.49	0.49	0.89	0.86	1.22	2.19	1.72	1.39	1.39	1.81	2.35	1.37	1.17	*	*	2.90
JASPT	0.34		0.32	0.27	0.23	0.66	0.60	0.96	2.09	1.57	1.16	1.06	1.53	1.77	1.05	0.86	*	3.01	2.50
ORB2	0.40	0.32		0.16	0.22	0.51	0.49	0.84	1.81	1.33	1.00	1.24	1.79	2.05	1.25	1.10	2.99	2.71	2.40
PW8	0.49	0.27	0.16		0.07	0.41	0.37	0.73	1.82	1.30	0.91	1.08	1.65	1.91	1.09	0.95	3.09	2.75	2.30
PW7	0.49	0.23	0.22	0.07		0.43	0.38	0.75	1.87	1.34	0.94	1.03	1.58	1.85	1.03	0.88	3.16	2.81	2.40
PW6	0.89	0.66	0.51	0.41	0.43		0.07	0.33	1.51	0.95	0.50	1.03	1.80	1.99	1.08	1.00	2.97	2.48	2.05
PW5	0.86	0.60	0.49	0.37	0.38	0.07		0.37	1.58	1.01	0.56	0.98	1.63	1.93	1.02	0.94	3.04	2.55	2.15
PW3	1.22	.96	.84	.73	.75	.33	.37		1.36	.76	.22	1.04	1.70	2.05	1.11	1.10	3.00	2.36	1.85
BC2B	2.19	2.09	1.81	1.82	1.87	1.51	1.58	1.36		0.60	1.16	2.39	3.09	3.40	2.46	2.46	1.87	1.00	0.56
BC4	1.72	1.57	1.33	1.30	1.34	0.95	1.01	0.76	0.60		0.56	1.79	2.49	2.80	1.86	1.86	2.35	1.68	1.10
BC6	1.39	1.16	1.00	0.91	0.94	0.50	0.56	0.22	1.60	0.56		1.23	1.93	2.24	1.30	1.31	2.85	2.16	1.65
BC8	1.39	1.06	1.24	1.08	1.03	1.03	0.98	1.04	2.39	1.79	1.23		0.70	1.01	0.09	0.28	4.00	3.39	2.90
BC12	1.81	1.53	1.79	1.65	1.58	1.80	1.63	1.70	3.09	2.49	1.93	0.70		0.32	0.63	0.71	4.67	4.09	3.70
BC14	2.35	1.77	2.05	1.91	1.85	1.99	1.93	2.05	3.40	2.80	2.24	1.01	0.32		0.94	0.99	4.96	4.40	4.00
OP2	1.37	1.05	1.25	1.09	1.03	1.08	1.02	1.11	2.46	1.86	1.30	0.09	0.63	0.94		0.22	4.05	3.46	3.00
OP4	1.17	0.86	1.10	0.95	0.88	1.00	0.94	1.10	2.46	1.86	1.31	0.28	0.71	0.99	0.22		3.97	3.45	3.00
Craig	*	*	2.99	3.09	3.16	2.97	3.04	3.00	1.87	2.35	2.85	4.00	4.67	4.96	4.05	3.97		1.27	1.90
BCE10	*	3.01	2.71	2.75	2.81	2.48	2.55	2.36	1.00	1.68	2.16	3.39	4.09	4.40	3.46	3.45	1.27		0.72
CHU26	2.90	2.50	2.40	2.30	2.40	2.05	2.15	1.85	0.56	1.10	1.65	2.90	3.70	4.0	3.00	3.00	1.90	0.72	

* Un-Navigable course line

NPSA Racing Marks Magnetic Bearing Matrix

Marks	PW12	JASPT	ORB2	PW8	PW7	PW6	PW5	BC2B	BC4	BC6	BC8	BC12	BC14	OP2	OP4	Craig	PW3	BCE10	CHU 26
PW12		047	357	015	023	010	014	338	349	006	058	079	086	062	066	*	012	*	*
JASPT	227		303	334	346	352	356	329	339	355	062	085	092	067	074	*	000	320	*
ORB2	177	123		064	077	020	028	334	347	009	075	091	097	079	087	297	019	322	154
PW8	195	154	244		110	003	013	328	339	001	076	094	099	081	090	295	101	319	148
PW7	203	166	257	290		355	003	327	337	357	074	093	099	079	089	295	005	318	149
PW6	190	172	200	183	175		128	319	329	358	098	108	111	103	114	288	017	313	143
PW5	194	176	208	193	183	308		319	328	353	096	107	110	101	113	288	007	312	*
BC2B	158	149	154	148	147	148	139		124	123	123	123	123	124	129	262	128	302	*
BC4	169	159	167	159	157	150	148	304		123	123	122	123	124	131	272	131	303	*
BC6	186	175	189	181	177	179	173	303	303		122	122	123	125	135	278	150	303	*
BC8	238	242	255	256	254	278	276	303	303	302		122	124	162	202	285	297	303	*
BC12	259	265	271	274	273	288	287	303	302	302	302		086	297	279	288	299	302	*
BC14	266	272	277	280	279	291	298	303	303	303	304	310		301	288	289	300	303	*
OP2	242	247	259	261	259	283	281	304	304	305	342	117	121		218	296	300	304	*
OP4	246	254	267	270	269	294	293	309	311	315	022	099	108	038		289	311	307	*
Craig	*	*	117	115	115	107	108	082	092	098	105	108	109	106	127		101	052	*
PW3	192	180	199	190	185	197	187	308	311	122	117	119	120	120	131	281		305	136
BCE10	*	140	142	139	138	132	132	112	122	123	123	122	123	123	127	232	125		*
CHU 26			334	330	329	325	324	*	*	*	*	*	*	*	*	*	*	*	*

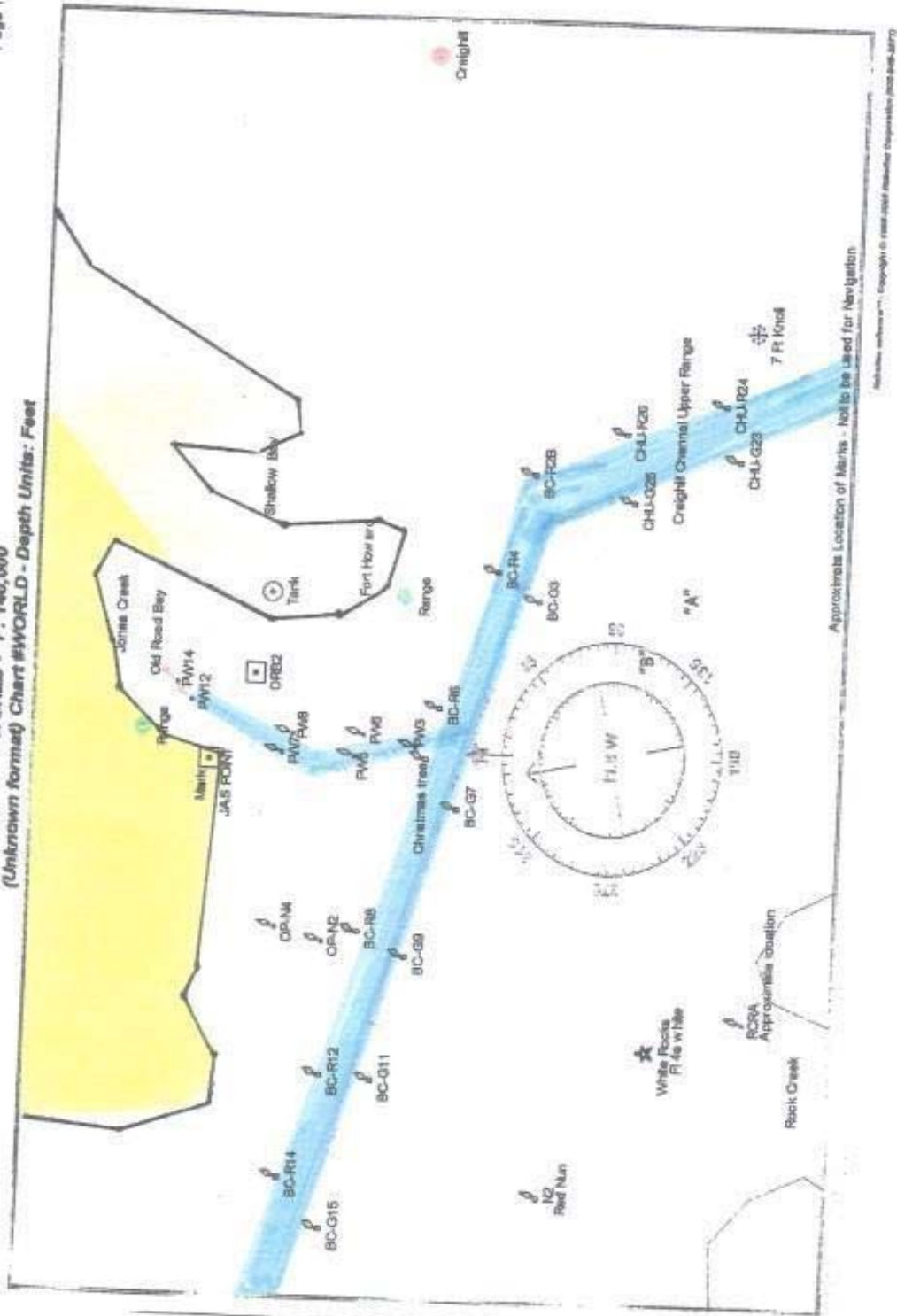
Additional bearings and distances. NOTE Only racing leg marks to and from are listed.

* Un-Navigable course line

NPSA Mark Locations

Mark	Latitude	Longitude
PW14	N39 12.600'	W076 27.500'
PW12	N39 12.538'	W076 27.494'
JASPT	N39 12.266'	W076 27.750'
ORB2	N39 12.148'	W076 27.370'
PW8	N39 12.050'	W076 27.539'
PW7	N39 12.060'	W076 27.624'
PW6	N39 11.645'	W076 27.478'
PW5	N39 11.684'	W076 27.553'
PW3	N39 11.317'	W076 27.517'
BC2B	N39 10.713'	W076 25.952'
BC4	N39 10.943'	W076 26.664'
BC6	N39 11.154'	W076 27.332'
BC8	N39 11.599'	W076 28.807'
BC9	N39 11.450'	W076 28.925'
BC11	N39 11.700'	W076 29.683'
BC12	N39 11.850'	W076 29.646'
BC14	N39 12.000'	W076 30.003'
OP2	N39 11.680'	W076 28.864'
OP4	N39 11.875'	W076 28.736'
Craighill	N39 11.316'	W076 23.670'
BCE10	N39 10.358'	W076 24.750'
CHU23	N39 09.317'	W076 25.133'
CHU25	N39 10.200'	W076 25.767'
CHU26	N39 10.283'	W076 25.617'
A	N39 09.75'	W076 27.0'
B	N39 10.08'	W076 27.5'
Race Committee does not take responsibility for errors.		

WORLD - 1 : 146,000
(Unknown format) Chart #WORLD - Depth Units: Feet



SERIES 3 RCRA COURSES FOR JOINT SERIES

		TO											
		A	B	C	1	2	3	4	5	6	7	8	9
		N39 10.902 W076 29.291	N39 10.117 W076 29.706	N39 10.500 W076 28.500	N39 10.212 W076 25.779	N39 10.820 W076 26.706	N39 11.165 W076 27.819	N39 11.500 W076 28.921	N39 09.697 W076 29.837	N39 11.690 W076 29.621	N39 10.845 W076 30.289	N39 12.050 W076 30.777	N39 12.700 W076 31.480
		YC "A"	YC "B"	YC "C"	G "25"	G "3"	G "7"	G "9"	R "2"	G "11"	RN "2"	G "1M"	G "3"
FORM	A		214°	123°	115°	104°	088°	037°	211°	354°	277°	303°	328°
			0.85	0.74	2.81	2.01	1.18	0.67	1.28	0.83	0.78	1.63	2.47
	B	034°		067°	Do Not Use	084°	066°	035°	205°	014°	339°	325°	343°
		0.85		1.01		2.43	1.81	1.52	0.43	1.58	0.86	2.10	2.93
	C	303°	247°		098°	077°	039°	041°	232°	323°	283°	300°	313°
		0.74	1.01		2.15	1.45	0.84	1.04	1.31	1.47	1.44	2.36	3.19
	1	295°	Do Not Use	278°		321°	312°	309°	Do Not Use	308°	291°	290°	311°
		2.81		2.15		0.90	1.80	2.80		3.30	3.60	5.20	5.10
	2	284°	265°	257°	141°		302°	302°	255°	302°	281°	280°	307°
		2.01	2.43	1.45	0.90		0.93	1.84	2.65	2.50	2.80	3.40	4.15
	3	268°	246°	219°	132°	122°		302°	236°	302°	271°	280°	309°
		1.18	1.81	0.84	1.80	0.93		0.92	2.10	1.58	1.95	2.49	3.24
	4	217°	215°	221°	129°	122°	122°		212°	302°	250°	280°	312°
		0.67	1.52	1.04	2.80	1.84	0.92		1.91	0.65	1.26	1.54	2.32
	6	174°	194°	143°	128°	122°	122°	122°	193°		218°	280°	316°
		0.83	1.58	1.47	3.30	2.50	1.57	0.64	2.00		0.98	0.97	1.70
	7	097°	159°	103°	111°	101°	091°	070°	172°	038°		331°	344°
		0.78	0.86	1.44	3.60	2.80	1.95	1.26	1.18	0.98		1.26	2.05
8	123°	145°	120°	110°	100°	100°	100°	151°	100°	151°		309°	
	1.63	2.10	2.36	5.20	3.40	2.49	1.54	2.46	0.97	1.26		0.85	
9	148°	163°	133°	131°	127°	129°	132°	167°	136°	164°	129°		
	2.47	2.93	3.19	5.10	4.16	3.24	2.32	3.25	1.70	2.06	0.85		

Course in Magnetic Degrees Distance in Nautical Miles

rev 4/22/19 dmm

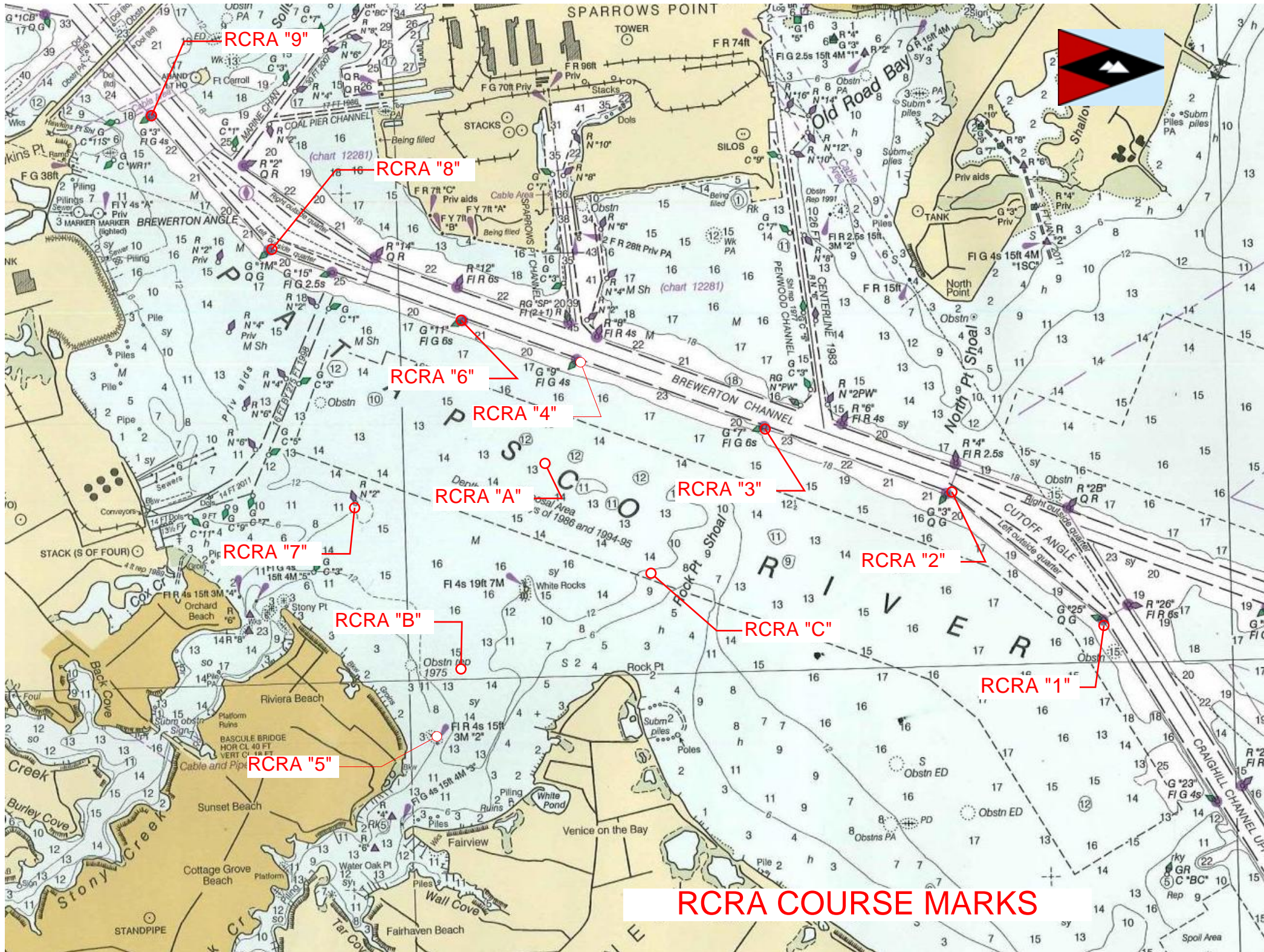
STANDARD COURSES

marks in red - leave to port

marks in green - leave to starboard

Rock Creek Racing Association	Wind Direction	Course	Start	RCRA Mark	RCRA Mark	RCRA Mark	RCRA Mark	RCRA Mark	Finish	Total Dist
	N	A	Non-Spin	A	4	7	B			A
	Spin		A	4	8	B			A	5.15
NE	B	Non-Spin	A	3	6				A	3.51
		Spin	A	3	8	7			A	5.69
E	C	Non-Spin	A	2					A	4.02
		Spin	A	1					A	5.64
E	D	Non-Spin	A	3	6				A	3.51
		Spin	A	3	8				A	5.28
SE	E	Non-Spin	A	C	6				A	3.03
		Spin	A	C	8				A	4.71
S	F	Non-Spin	A	B	4				A	3.00
		Spin	A	B	4	A	4		A	4.30
S	G	Non-Spin	A	B	6	4			A	3.65
		Spin	A	B	6	3			A	5.11
W	H	Non-Spin	A	7	3				A	3.91
		Spin	A	7	2				A	5.58
W	I	Non-Spin	A	7	C				A	2.95
		Spin	A	7	C	3			A	4.24
NW	J	Non-Spin	A	8	7				A	3.67
		Spin	A	9					A	4.94
NW	K	Non-Spin	A	6	3				A	3.51
		Spin	A	6	2				A	5.27

Rev 5/27/22



RCRA "9"

RCRA "8"

RCRA "6"

RCRA "4"

RCRA "A"

RCRA "3"

RCRA "7"

RCRA "2"

RCRA "B"

RCRA "C"

RCRA "1"

RCRA "5"

RCRA COURSE MARKS