

Connection

Winslow Township

Volume 4, Issue 4

April/May/June 2013

Mayor of Winslow Township
Barry Wright
609-567-0700



located on
Andrews Road,
Sicklerville, NJ

SPONSOR OF THE MONTH

American Heart Association/
American Stroke Association

QUOTE

You are never too old to
set another goal or to
dream a new dream.

C. S. Lewis

INSIDE THIS ISSUE:

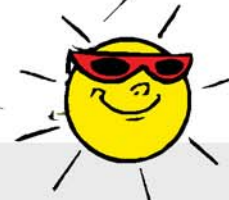
Camp DOT	2
Support Group	2
Org. to Support	2
DOT Events	3
DOT History	4
Business Spotlight	4
DOT Thank You	4
How to Help DOT	4



The DOT Organization, Inc.
(Dreams of Tomorrow)
DOT Center



P. O. Box 1
509 Four Mile Branch Road
Sicklerville, NJ 08081
(856) 262-3878 or (609) 320-1952



PLEASE HELP THE DOT ORGANIZATION

Purchase a Brick for \$20.00



- Leave a legacy of your contribution towards The DOT Organization Community Center for the youth of Southern New Jersey. Each purchase enables your name to be placed on a brick within the center, plus you will receive a certificate of appreciation from The DOT Organization.

UNITED WAY



- The DOT Organization, Inc (Dreams of Tomorrow), truly appreciates your consideration of supporting our efforts, to assist at-risk youth, by participating in the 2013-2014 United Way Campaign. As your company's Open Enrollment approaches, we ask that you remember to choose The DOT Organization, Inc, as your United Way designee. United Way - **Code 6245 or Code 19699**

TURKEY DRIVE



- Donate \$10.00 towards a turkey for a needy family for Thanksgiving from April 1, 2013 to November 21, 2013. Our goal is to distribute 300 turkeys for Thanksgiving. Please help us help the needy in our community.

CAMP DOT

Camp DOT "Summer Camp"

where your children will be well cared for
 and have lots of fun and academic enrichment
 age 5-13, June 24, 2013 to August 16, 2013,
 Monday-Friday 8 AM - 4 PM
 (extended hours 4-6 PM at an additional charge)
 Camp DOT located at The DOT Center,
 509 Four Mile Branch Road, Sicklerville, NJ 08081



your child will enjoy our programs: Public Speaking, Culture Diversity,
 Nutrition, Violence Prevention, weekly trips and much more
**taught by certified instructors with
 approved criminal background checks**

Enroll Today - Limited Space 856-262-3878 or 609-320-1952

Price \$135.00 per week (per child)

we accept NJCK - WFNT - Kinship Navigator - and DYFS program vouchers

Support Group

FREE MONTHLY SUPPORT GROUP

BREAST CANCER, DIABETES, AND CHRONIC PAIN

Please call to reserve a space.

All classes, support groups and programs will be held
 at **The DOT Organization Center** located at 509
 Four Mile Branch Road, Sicklerville, NJ 08081. For
 further information call **(856) 262-3878 or (609)
 320-1952**

ORGANIZATIONS TO SUPPORT

A.B.L.E.

Delta Sigma Theta Sorority

Omega Psi Phi Fraternity

Tonya Dorsey New Vision

Winslow Township Rotary

Zeta Phi Beta Sorority



DOT EVENTS



DOT FLAPJACK FUNDRAISER, Saturday, June 1, 2013, 8 to 10 AM, at Applebee's

455 Cross Keys Road, Sicklerville, NJ - \$8.00 Adults, \$6.00 children and seniors. For more information/tickets call (856) 262-3878 or (609) 320-1952.

DOT CAMP "SUMMER CAMP" - Ages 5-13, Monday thru Friday from June 24, 2013 to August 16, 2013, 8 AM to 10 AM

At the DOT Center, 509 Four Mile Branch Road, Sicklerville, NJ. Cost \$135.00 per child per week. Extended hours available from 4 to 6 PM at an additional charge. Call the DOT Center for information/application at (856) 262-3878 or (609) 320-1952.



DOT ONE STEP AT A TIME WALKING PROGRAM - Saturdays from September 14, 2013 to October 19, 2013 8:45 AM

Please come join The DOT Organization walking program designed especially for older adults. This is a 1 1/2 hour program lasting six (6) weeks. This will help you find new ways to make walking for fitness a natural part of your life. Learn strategies to move toward your goal of increasing your physical activity and improving your fitness level.



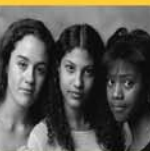
DOT OLDIES BUT GOODIES DANCE, Saturday, September 14, 2013 7 PM to midnight.

at Local 1360 Union Hall, 400 Commerce Lane & Rt. 73, West Berlin, NJ. Tickets \$20.00 at door \$25.00. For more information call (856) 262-3878 or (609) 320-1952.



DOT 2013 "IT'S ALL ABOUT YOU" SUMMIT - Saturday, October 26, 2013, 8 AM to 4 PM for girls from middle and high school

At Camden County College, Blackwood Campus, CIM Building, Blackwood, NJ. For application go to our website at www.thedotorganization.com. There is a \$15.00 registration fee. For more information or you need application mailed to you please call (856) 262-3878 or (609) 320-1952.



BUSINESS SPOTLIGHT

American Heart Association / American Stroke Association

Preventing Heart Attack and Stroke

One in three adult Americans has some form of cardiovascular (heart and blood vessel) disease. Coronary heart disease is our country's No. 1 cause of death; stroke is No. 4. About one-third of all deaths in the United States are from cardiovascular diseases. That's approximately as many as the next three leading causes of death combined.

The good news is that you can reduce your risk of heart attack and stroke. The first step is to talk to your healthcare provider. He or she will evaluate your risk factors. then you can begin to alter lifestyle habits that increase your risk.

Good health is more than a roll of the dice. Take control of your risk factors to help prevent a life threatening heart attack or stroke.

For heart or risk related information call the American Heart Association at 1-800-242-8721 or visit us online at heart.org. You can also receive American Heart Association information material at The DOT Organization, 509 Four Mile Branch Road, Sicklerville, NJ or call 609-320-1952.

DOT HISTORY

The **DOT Organization, Inc.** was founded March 2005 to implement the educational and informational processes needed to address the emerging issues and concerns of South Jersey communities.

The vision of this non-profit corporation is to eliminate and/or reduce both visible and invisible problems areas by providing positive influences, heightening awareness of educational and economic empowerment opportunities, and building bridges between home, school, and the community.

With the dedication, insight, experience, and expertise of its leaders. The **Dot Organization, Inc.** will lead community residents through required processes so that they benefit from state, local, and federal resource opportunities.

WHAT CAN I DO TO HELP DOT?

- *Designate DOT as my United Way Agency
- *Make DOT the receiver of my employer*s Matching Funds Program
- *Participate in my company*s Volunteer Program with DOT
- *Talk to my HR Personnel for other ways I can help DOT
- *Make an individual financial donation to DOT
- *Participate in DOT*s fundraisers
- *Sponsor a fundraiser for DOT
- *Sponsor youth in one of DOT*s programs
- *Tell others about DOT

THANK YOU

**Thank you to all that have
volunteered and made
contributions to our
organization.**



**DID
YOU
KNOW?**



Eskimos use
refrigerators
to keep food
from
freezing.

The DOT Organization, Inc, P. O. Box 1, Sicklerville, New Jersey 08081
509 Four Mile Branch Road, Sicklerville, NJ 08081
(856) 262-3878 or (609) 320-1952

email: thedotorganization@hotmail.com

website: thedotorganization.com