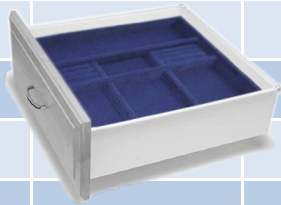


ZARGEN = OPENING LESS 1 5/16"

Jewelry Tray	WIDTH	DEPTH	SHELF WIDTH FOR EXACT FIT	DRAWER DEPTH	INSIDE DEPTH	BACK SPACE
JT-1814	15.625	12.438	16.563	14.000	12.875	0.437
JT-2414	21.625	12.438	22.563	14.000	12.875	0.437
JT-3014	27.625	12.438	28.563	14.000	12.875	0.437
JT-2416	21.625	14.438	22.563	16.000	14.813	0.375
JT-3016	27.625	14.438	28.563	16.000	14.813	0.375
				18.000	16.375	
				18.875	17.625	
				20.250	19.188	
				21.654	20.750	



HR MAPLE SIDE MOUNT= OPENING LESS 2 3/8"

Jewelry Tray	WIDTH	DEPTH	SHELF WIDTH FOR EXACT FIT	DRAWER DEPTH	INSIDE DEPTH	BACK SPACE
JT-1814	15.625	12.438	18.000	14.000	12.438	0.000
JT-2414	21.625	12.438	24.000	14.000	12.438	0.000
JT-3014	27.625	12.438	30.000	14.000	12.438	0.000
JT-2416	21.625	14.438	24.000	16.000	14.438	0.000
JT-3016	27.625	14.438	30.000	16.000	14.438	0.000
				10.000	8.438	
				12.000	10.438	
				18.000	16.438	
				20.000	18.438	



HR MAPLE UNDER MOUNT = OPENING LESS 1 11/16"

Jewelry Tray	WIDTH	DEPTH	SHELF WIDTH FOR EXACT FIT	DRAWER DEPTH	INSIDE DEPTH	BACK SPACE
JT-1814	15.625	12.438	17.313	14.000	12.688	0.250
JT-2414	21.625	12.438	23.313	14.000	12.688	0.250
JT-3014	27.625	12.438	29.313	14.000	12.688	0.250
JT-2416	21.625	14.438	23.313	16.000	14.688	0.250
JT-3016	27.625	14.438	29.313	16.000	14.688	0.250
				12.000	10.688	
				15.000	13.688	
				18.000	16.688	