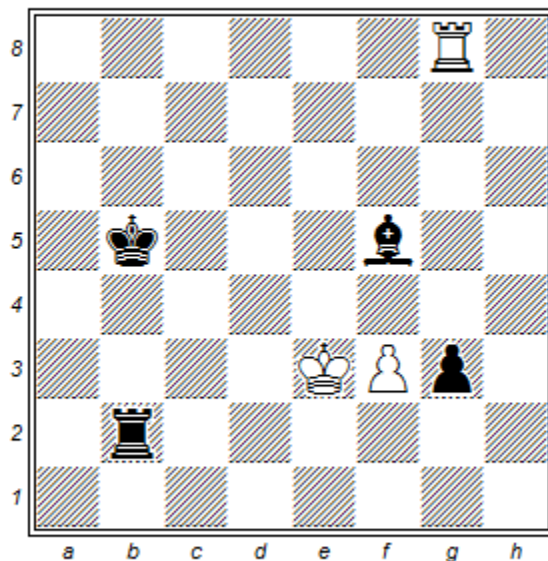


Sample UIL Chess Puzzles and Answers. Grade 4-5.

White to move. Which of these is the best move in the position below?

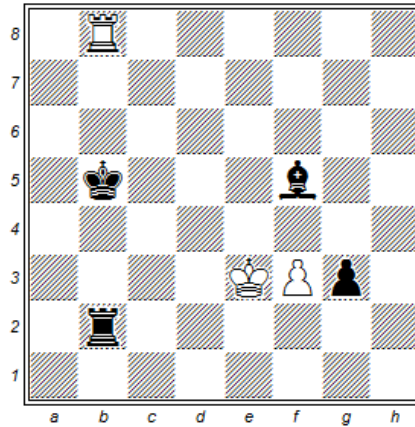


- (a) Rg5
- (b) Rxf3
- (c) Rb8
- (d) Kf4

Correct answer: (c)

To answer this question correctly, we must consider each of the possibilities in terms of the material balance. In the diagram position, black is ahead by a Bishop.

- (a) This answer is incorrect. While 1.Rg5? would *pin* the Black Bishop and allow White to restore the material balance on the next move, the resulting position: 1...g2 2. Rxf5+ Kc6 3. Rg5 Kd7 would be a draw.
- (b) This answer is incorrect. After 1.Rxf3? Kc6! Black is ahead on material.
- (c) This answer is correct! After 1.Rb8+! white *skewers* the Black Rook:



1.Rb8+

After 1...Kc4 2.Rxb2 White is now winning on material.

(d) This answer is clearly incorrect. After 1.Kf4? g2! 2. Kxf5 the material balance is even and a draw would result.