



# CASCADE TOWERS

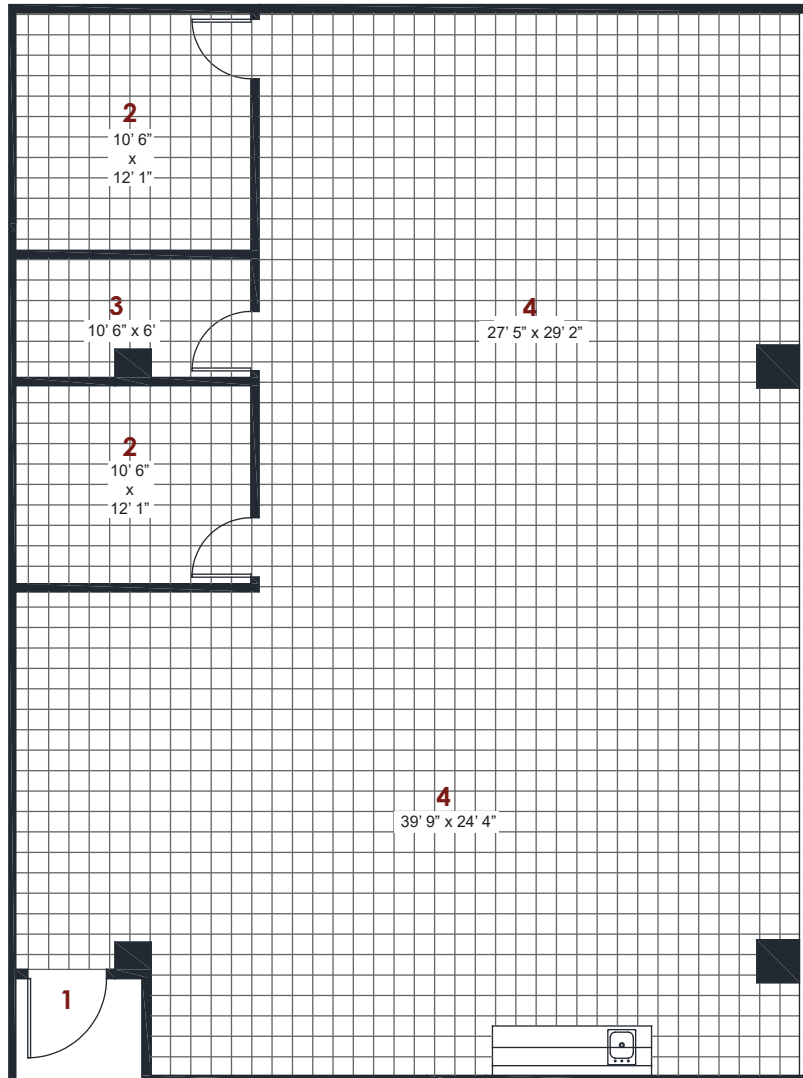
## West Tower Suite 730

20829 72nd Avenue South, Kent, WA 98032

Twin 8-Story Class A Office Towers with a Fountain and Central Pedestrian Promenade.

**2,843** R.S.F

- 1 Entry
- 2 Office
- 3 Work Room
- 4 Open Office Area



(253) 395-9226

Rob Samuels | Leasing Coordinator  
RobS@FountainheadNW.com

CREATING THE **BEST PLACE**  
FOR THE **BEST PEOPLE** TO WORK.



ENGAGE YOUR  
EMPLOYEE'S NEEDS...

» CULTURE & AMENITIES «



- 1/4 & 1/2 Mile Outdoor Fitness Paths with Stretching Station
- On-Site Management, Engineering & Design Team
- Corporate Barbeque Areas
- Nature trail along Mill Creek
- Conference Center with rooms up to 200 people



24/7 GYM  
ACCESS

Rachel's Body Shop

Full service 24/7 fitness center & personal training ([www.rachelsbodyshop.com](http://www.rachelsbodyshop.com))



EARLY  
EDUCATION

Bright Horizon's Child Care

Providing infant to pre-kindergarten programs ([www.brighthorizons.com](http://www.brighthorizons.com))



FULL  
SERVICE

Alki Bakery Cafe

Providing breakfast, lunch & catering services. ([www.alkibakery.com](http://www.alkibakery.com))



CLOSE TO  
EVERYTHING..

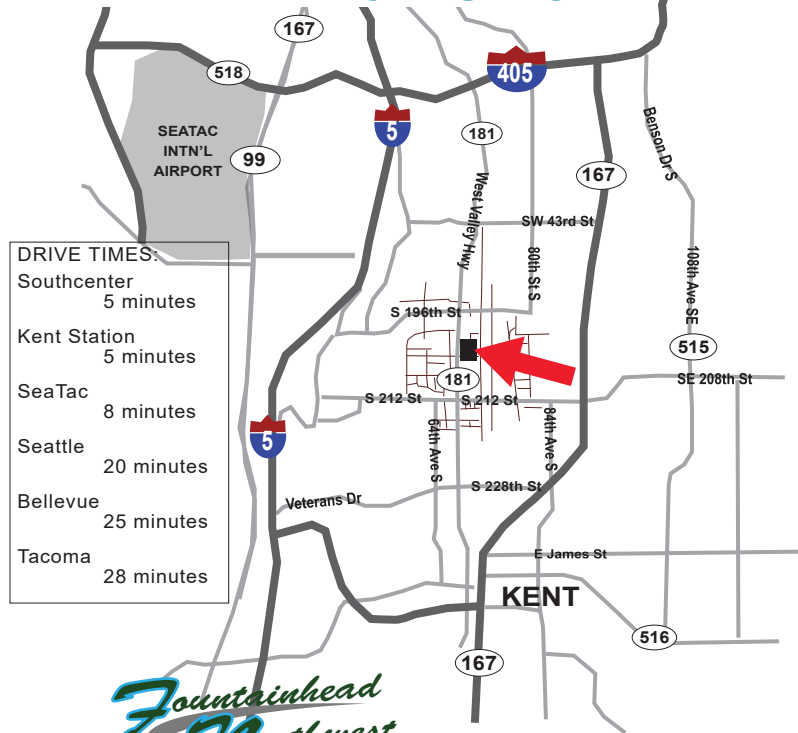
- Shopping
- Hotels
- Restaurants
- Entertainment
- Schools
- Housing

+ ON SITE  
TRANSPORTATION ROUTES

FOR MORE INFORMATION  
[www.FountainheadNorthwest.com](http://www.FountainheadNorthwest.com)  
253-395-9226



Access to FOUR major highways!



Fountainhead  
Northwest  
OFFICE DEVELOPMENT