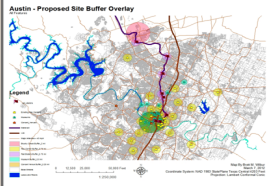
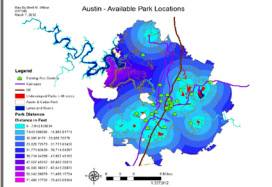


THE AUSTIN MUSIC HERITAGE CENTER

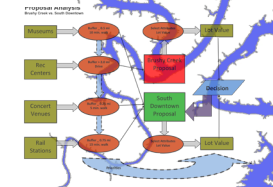
Preface

From blues to indie rock, country to jazz, rock en español and more, Austin's nearly 200 live music venues draw locals and tourists alike. The problem is that the numerous museums and memorials do not represent the entire Austin music scene. The proposal required an evaluation of the parks, museums, recreation centers and commuting hubs.



Process

The original idea was to develop the heritage center in the neighborhood located south of Cesar Chavez and east of I-35. However, the site was not suitable for the proposal. Two additional sites were investigated. A north Austin site at Brushy Creek Park, and a site south of downtown. The site at Auditorium Shores became the obvious choice.



Context

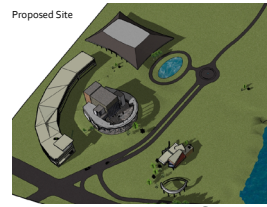
The original idea was to develop the heritage center in the neighborhood located south of Cesar Chavez and east of I-35. However, the site was not suitable for the proposal. Two additional sites were investigated. A north Austin site at Brushy Creek Park, and a site south of downtown. The site at Auditorium Shores became the obvious choice.

Brett M. Wilbur
University of Texas at Austin
School of Architecture

Community and Regional Planning
Visual Communication and GIS
Spring 2012
Professor Ming-Chun Lee



Proposed Site



Concept

The lake at Auditorium Shores and throughout Austin is ubiquitous. It is the backdrop to much of the city's splendor and fascination. The new heritage center will emphasize the importance of the lake. It borrows from the architecture of city hall and the Long Center and adds a special blend which both accentuates without distracting from the ambiance of the performing arts center and auditorium.

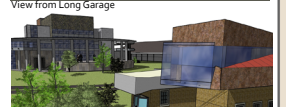


Program

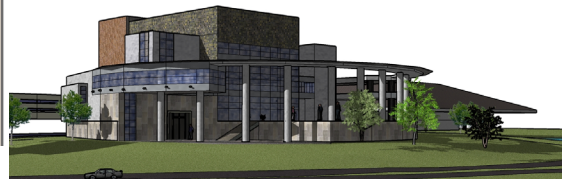
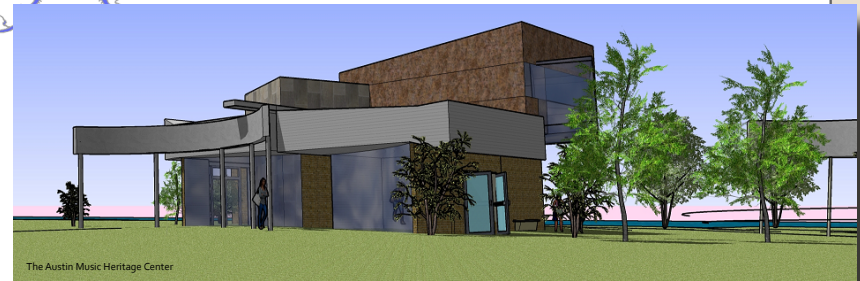
Within City of Austin
Undeveloped Parkland
Lot Over 20 Acres
Near Transportation
Accessibility
Metrorail
Major Arterials
Bike/Walking Paths



Project



Heritage Center - Aerial View



US Census Bureau American Fact Finder
US Census Bureau Tiger/Line Shapefiles
Capital Metro Geospatial Data
City of Austin GIS Data