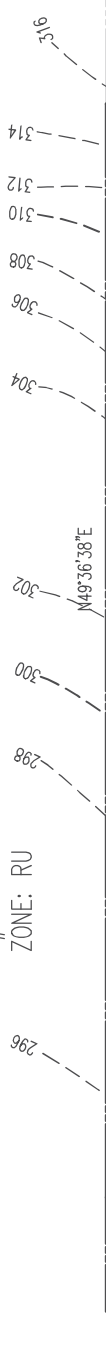


TM#10-A-8A  
ZONE: RU



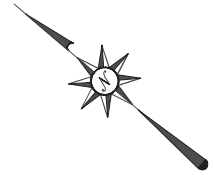
M49°36'38"E  
422.65'

SCOTTEN FAMILY TRUST  
#13232  
TM# 10-A-8D2  
143,521 SF  
(3.2948 ACRES)

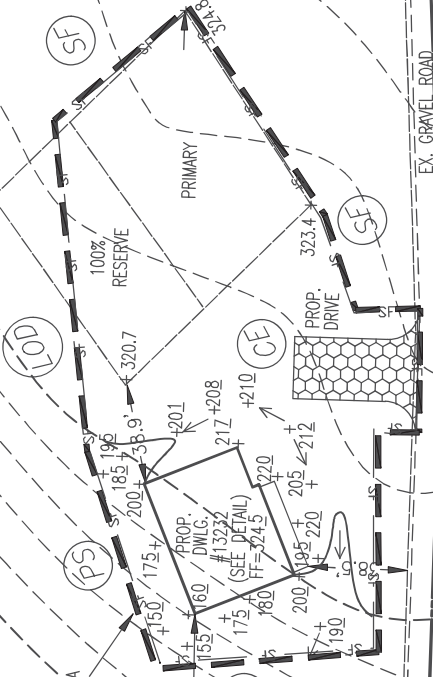
TM# 10-A-8D  
ZONE: RU

N40°23'22"W  
333.63'

13250 Scotten Dr. TM# 10-A-8D1  
ZONE: RU



S40°23'22"E  
339.69'



DISTURBED AREA  
= 21,671/SF

PROP. DWLG.  
#13232  
(SEE DETAIL)  
FF=24.5

ELYS FORD ROAD  
(R/W VARIES)  
RT #610

EX. PRIVATE  
INGRESS/EGRESS  
EASEMENT (INST. #  
180018090)

JAMES A. & KATHLEEN  
M. SEQUEIRA  
TM#10-A-8C  
ZONE: RU  
INST. #200028672

9230 ELYS FORD RD, TM#10-A-8B  
ZONE: RU

SCOTTEN DRIVE  
(PRIVATE 20' ROAD)

EX. PRIVATE  
INGRESS/EGRESS  
EASEMENT  
INST. #200028672

EX. PRIVATE  
INGRESS/EGRESS  
EASEMENT (INST. #  
180018090)

EX. PRIVATE  
INGRESS/EGRESS  
EASEMENT  
INST. #200028672

EX. PRIVATE  
INGRESS/EGRESS  
EASEMENT  
INST. #200028672

EX. PRIVATE  
INGRESS/EGRESS  
EASEMENT  
INST. #200028672

EX. PRIVATE  
INGRESS/EGRESS  
EASEMENT  
INST. #200028672