

AMERICAN ELECTRIC EQUIPMENT, INC.

P.O. BOX 710 BECKLEY, WV 25801

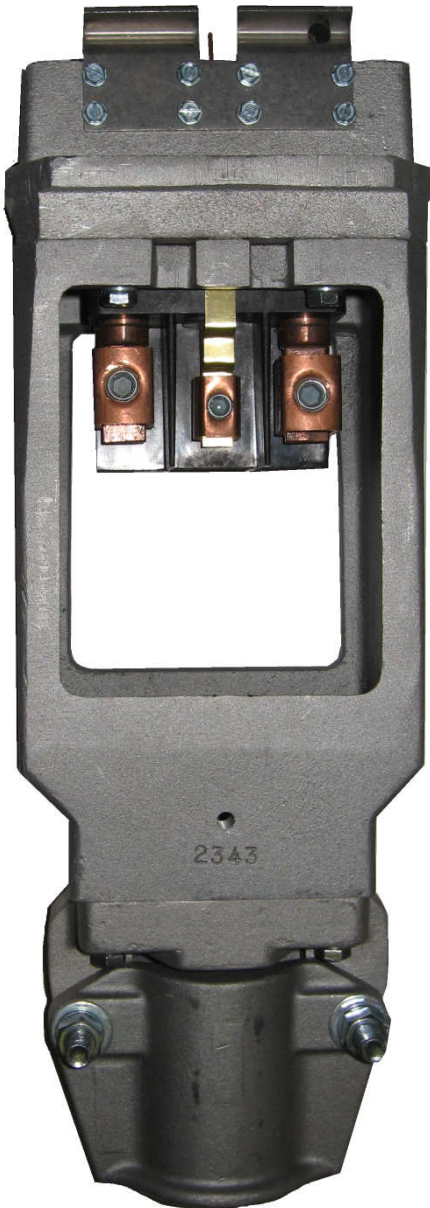
PHONE: 304-255-7438

FAX: 304-255-7448

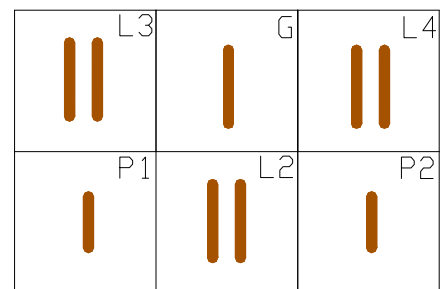
PL11108-107

Document A-13808

February 13, 2014



PIN ARRANGEMENT 600 AMP 1000 VOLT



Lever Action Connectors

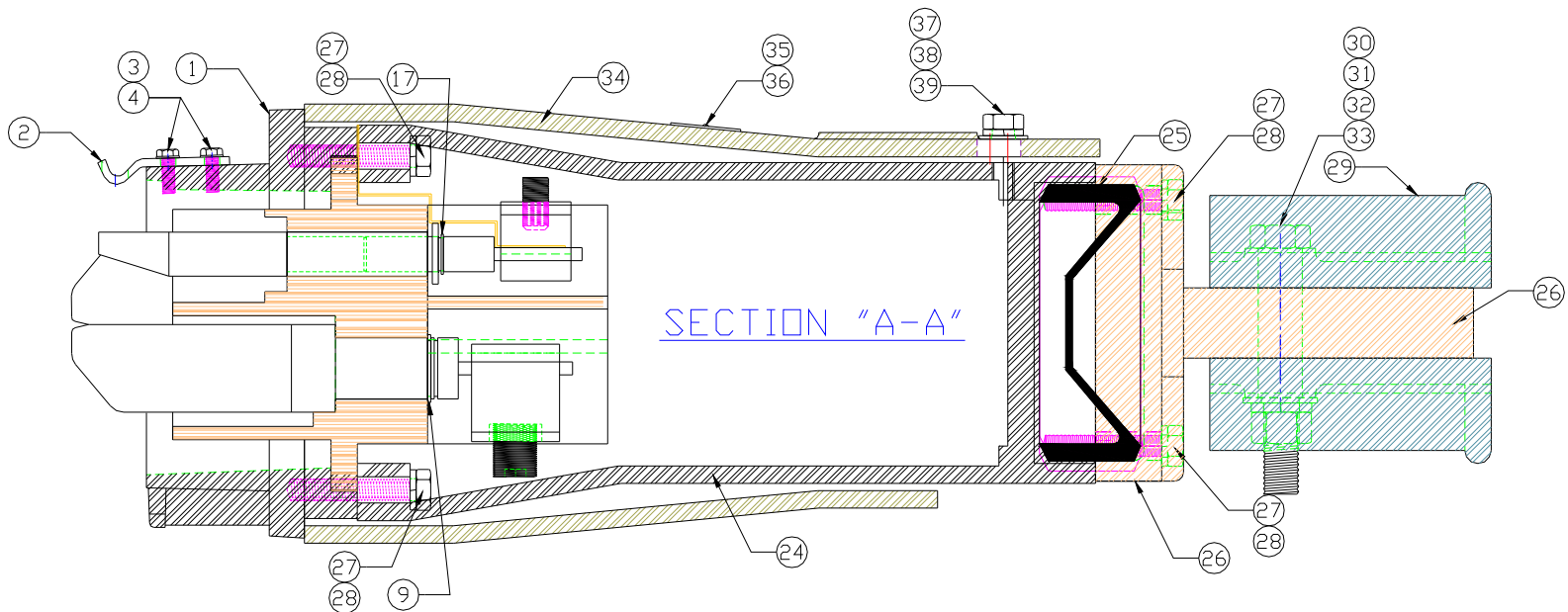
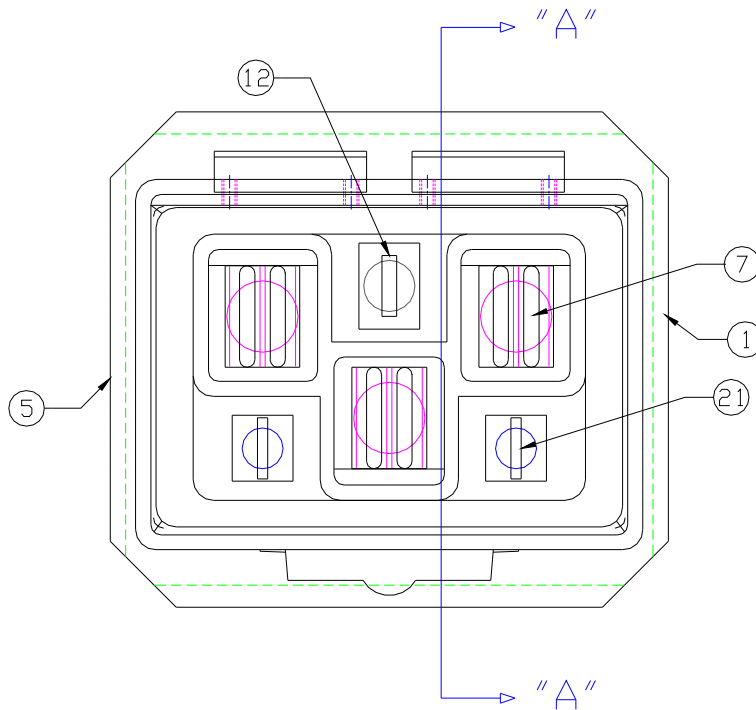
AEEI's low voltage figure 107 connectors are rugged, trouble free devices providing quick, confident connect/disconnect for portable mining equipment or self-propelled machinery. They are rated 600 Amperes at 1000 VAC. Cable sizes range from #1/0 to 350 MCM.

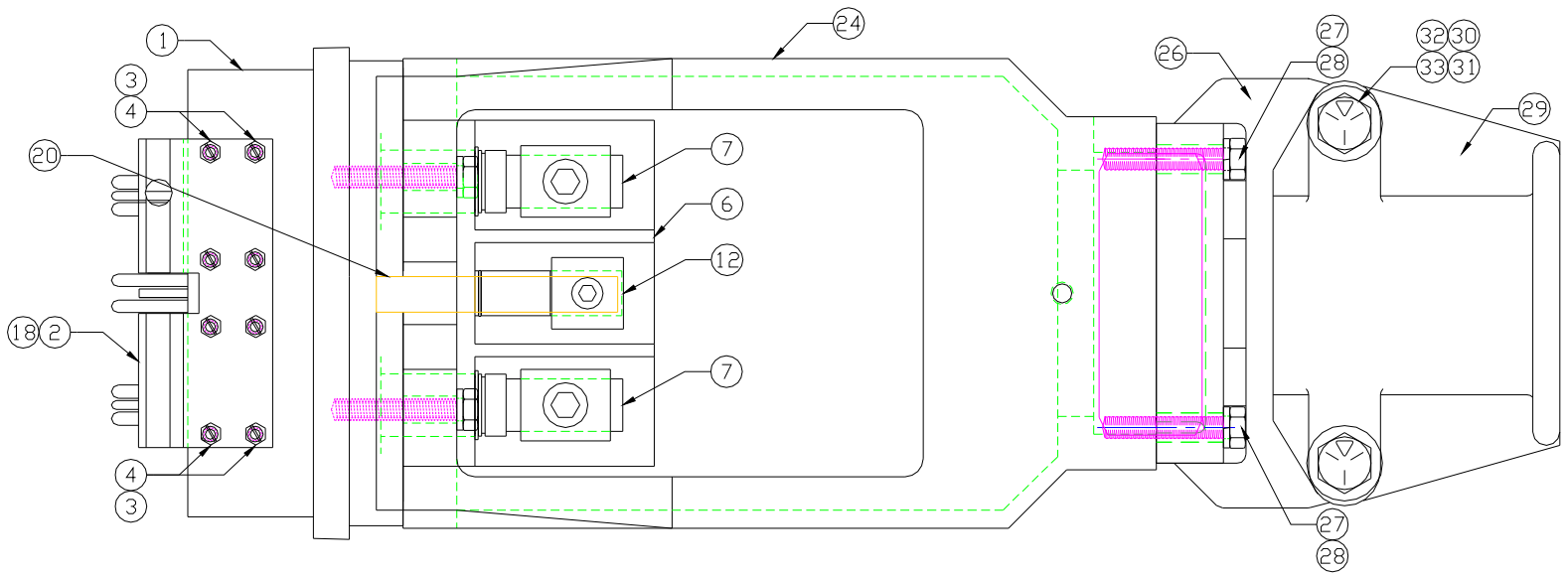
Available Repair Parts List

Bill Of Material For Figure 107C Plug Number D-11108				Drawing
Item	Quantity	Part Number	Description	Drawing Number
1	1	025-3	BASE	D-025-2
2	1	13390	TOP LATCH	A-13390
3	8	2069-3	10/32 SLOTTED HEX HEAD SCREW 1/2" LONG	A-2069
4	8	2071	LOCK WASHER 3/16"	A-2071
5	1	13363-6	IDENTIFICATION STICKER	A-13363
6	1	13397	INSULATOR	D-13397
7	3	13370	PHASE BLADE ASSEMBLY	A-13370
8	1	4050	POWER BLADE AND STUD	A-4050
9	1	2064	7/8" ROTOR CLIP	A-2064
10	1	149	POWER TERMINAL	A-149
11	1	3305	5/8" - 18 NF x 3/4" SET SCREW	A-3305
12	1	13450	GROUND BLADE ASSEMBLY	A-13450
13	1	13782	GROUND BLADE AND STUD	A-13782
14	1	13450-1	2" GROUND BLADE SPACER	A-13450-1
15	1	2694	7/16" - 20 NF x 3/4" SET SCREW	A-2694
16	1	102	GROUND TERMINAL	A-102
17	1	2064-2	1/2" ROTOR CLIP	A-2064-2
31	1	2067-2	1/2" FLAT WASHER	A-2067
20	1	13366	GROUND STRAP	A-13366
21	2	13371	PILOT BLADE ASSEMBLY	A-13371
17	1	2064-2	1/2" ROTOR CLIP	A-2064-2
22	1	7813	PILOT BLADE AND STUD	B-7813
23	1	11473	SLOTTED HEAD SET SCREW 1/4" - 20 x 1/2"	A-11473
24	1	2343	BELL HOUSING	D-2343
25	1	068	GROMMET	A-068
26	1	458	STRAIN CLAMP NUT	C-458
27	8	2068-4	5/16" - 18 x 1-1/2" HEC HEAD CAP SCREW	A-2068
28	8	2067-2	5/16" LOCK WASHER	A-2067
29	2	711	STRAIN CLAMP HALF	B-711
30	2	2065-3	1/2" - 13 x 3-1/2" HEX HEAD CAP SCREW	A-2065
31	2	2067-2	1/2" FLAT WASHER	A-2067
32	2	2071-4	1/2" LOCK WASHER	A-2071
33	2	2066-3	1/2" HEX NUT	A-2066
34	1	2344	SLEEVE	C-2344
35	1	063	NAME TAG WARNING	A-063
36	2	2072	DRIVE SCREW #4 x 3/16" LONG	A-2072
37	1	2068-2	5/16" - 18 x 1" HEX HEAD CAP SCREW	A-2068
38	1	2071-2	5/16" LOCK WASHER	A-2071
39	1	2067-2	5/16" FLAT WASHER	A-2067

Available Repair Kit

Part Number	Qty.	Description	Drawing Number
064-2-KIT		Top Latch Kit For 64 / 107 Plug	
		Parts Included In Kit	
	1	TOP LATCH	A-13390
	8	3/16" x 1/2" HEX HEAD SLOTTED MACH. SCREW	A-2069-3
	8	3/16" LOCK WASHER	A-2071





Features

- ✓ Single-piece, high grade insulator
- ✓ Aluminum housing
- ✓ Self-contained cable strain relief and cable grommet
- ✓ Fits both flat and round trailing cables
- ✓ All live exposed parts are completely enclosed by the metal housing
- ✓ Easy to remove sleeve for making cable terminations
- ✓ Minimum effort required to connect or disconnect electrical connections.
- ✓ The ground blade is always the last to break, first to make
- ✓ Ground check circuits make last, break first to insure phase connections are de-energized when connector opens
- ✓ Self-wiping contacts insure good electrical connections after each operation
- ✓ Interchangeable with other industry standard figure 107 plugs
- ✓ Removable ground strap for ground pin isolation