

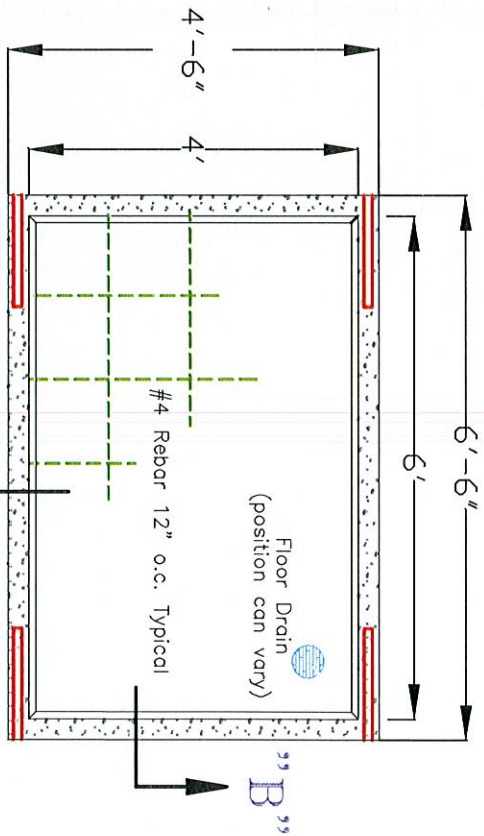
A & L Vault Company

P.O. Box 815
111 E. Pryor St.
Athens, AL 35612

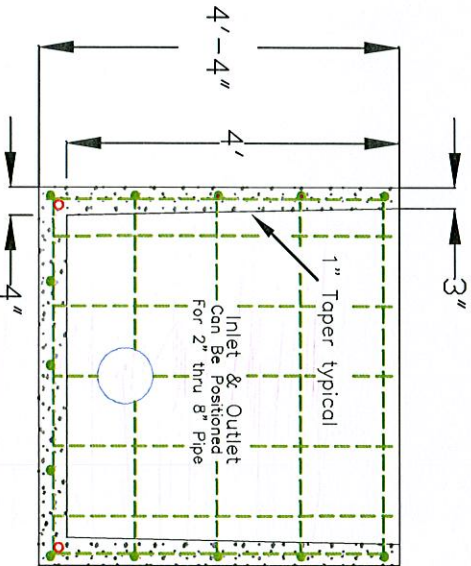
(256) 232-2100
Scale 1/4" = 1"

VAULT CONSTRUCTION FEATURES

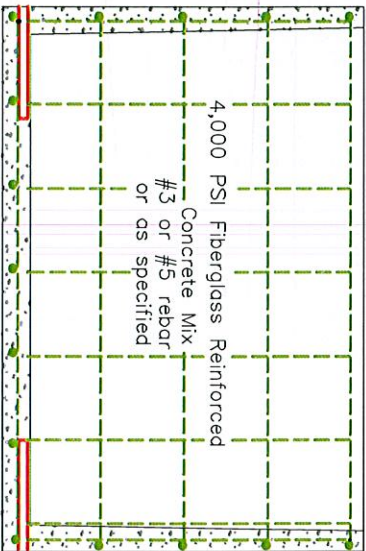
- 4,000 PSI Fiberglass Reinforced Concrete Mix
- #3 or #5 Rebar or As Specified
- 1-1/4" Lifting Holes
- Pipe Penetrations Sealed with Waterproofing



Top View



Side View A



Front View B

Please note that the dimensions are typical due to variations during the curing may have minute changes

A&L-7248CV4

A&L-7248CV4