

Art Mould Plastics

"SUPPORTING THE REINFORCING CONCRETE INDUSTRY SINCE 1966"



Table of Contents

Individual Support Chairs

Linden Chairs	3
Sand Plates	3
Stackable Chair	5
X-Chairs	7
Rod Spacers	8
Type-A	10
Sand Plates	10
Type-B	11

Circular Chairs

Wagon Wheels	12
--------------------	----

Bolsters

Heavy Duty Beam Bolsters	13
Slab Bolsters	15

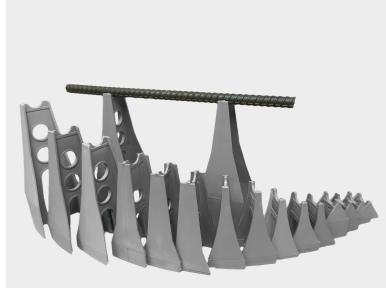
Safety Products

Anti Impalement Safety Caps - OSHA	17
Rebar Safety Caps	17

More Products

Form Spreaders	18
Polyserts	19

LINDEN CHAIR



LINDEN CHAIR

Art Mould's All Plastic Linden Chairs are used in slabs for supporting all types of reinforcing steel. Excellent for supporting rebar in bridge deck construction, or where-ever a corrosion free support is required. The high sizes have an arch design for straddling lower mats of rebar. The chair is made of High Impact material and its design gives it the strength of steel. Art Mould's Linden Chairs are strong yet light in weight and packaged in UV protected poly bags for convenience of carrying around job sites.

LINDEN CHAIR SAND PLATES

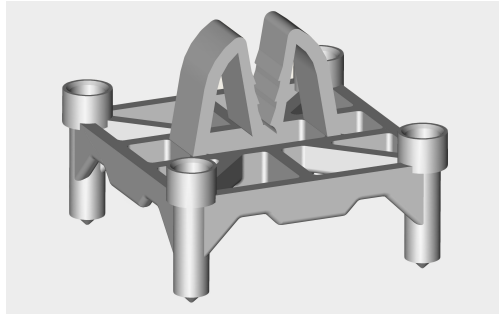
Linden Chair Sand Plates are designed for use with the Linden Chair. The chair base simply snaps into slots on the plate for a snug connection. Chairs with sand plates are used for slabs on grade with sand, foam and vapour barrier. Ships separately for quick and easy assembly at the job site.

Size Available -	1"-10" every 1/4"
Colour -	Concrete grey
Material -	Reinforced, high impact polypropylene
Strength -	A minimum of 400lbs / chair
Chemical Resistancy -	Excellent
Packaging -	In heavy-duty UV protected poly bags Quantity varies by size
Installation -	Good for both Black and Corrosion Resistant rebar Place chair on deck forms Can straddle bottom steel bars Spacing depends on loads Standard in every 3-4 feet
Sand Plate -	One size fits all Linden Chairs up to 7"

SIZING

PART #	HEIGHT	HEIGHT	PC/BAG	BAG/PALLET	PC/PALLET
LC1.0	1"	25MM	500	40	20,000
LC1.25	1-1/4"	32MM	500	40	20,000
LC1.5	1-1/2"	40MM	250	40	10,000
LC1.75	1-3/4"	45MM	250	40	10,000
LC2.00	2"	50MM	250	40	10,000
LC2.25	2-1/4"	58MM	200	40	10,000
LC2.50	2-1/2"	63MM	200	40	8,000
LC2.75	2-3/4"	70MM	300	25	7,500
LC3.00	3"	75MM	300	25	7,500
LC3.25	3-1/4"	77MM	300	25	7,500
LC3.50	3-1/2"	85MM	300	25	7,500
LC3.75	3-3/4"	92MM	200	25	5,000
LC4.00	4"	100MM	200	25	5,000
LC4.25	4-1/4"	108MM	200	25	5,000
LC4.50	4-1/2"	110MM	200	25	5,000
LC4.75	4-3/4"	120MM	200	25	5,000
LC5.00	5"	125MM	200	25	5,000
LC5.25	5-1/4"	133MM	200	25	5,000
LC5.50	5-1/2"	140MM	200	25	5,000
LC5.75	5-3/4"	146MM	200	25	5,000
LC6.00	6"	150MM	100	25	2,500
LC6.25	6-1/4"	158MM	100	25	2,500
LC6.50	6-1/2"	165MM	100	25	2,500
LC6.75	6-3/4"	170MM	100	25	2,500
LC7.00	7"	175MM	100	25	2,500
LC7.25	7-1/4"	183MM	75	25	1,875
LC7.50	7-1/2"	190MM	75	25	1,875
LC7.75	7-3/4"	195MM	75	25	1,875
LC8.00	8"	200MM	75	25	1,875
LC8.25	8-1/4"	210MM	75	25	1,875
LC8.50	8-1/2"	215MM	50	25	1,250
LC8.75	8-3/4"	220MM	50	25	1,250
LC9.00	9"	228MM	50	25	1,250
LC9.25	9-1/4"	235MM	50	25	1,250
LC9.50	9-1/2"	240MM	50	25	1,250
LC9.75	9-3/4"	247MM	50	25	1,250
LC10.00	10"	254MM	50	25	1,250

PRECAST STACKABLE CHAIR



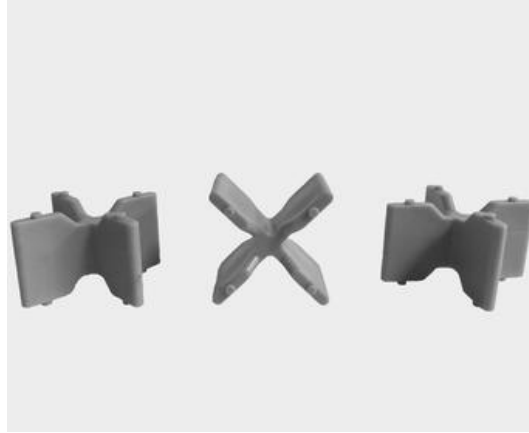
Art Mould's Precast Chair is a versatile **Stackable Chair** with a single clip that fits mesh to 20M bar. It is made with composite material for strength, corrosion resistance and durability, while the design allows for concrete flow, and eliminating the risk of voids. Its pointy legs result in minimal contact and exposure on the panel surface.

STACKABLE CHAIR	
Size Available -	1" - 4" every 1/4" (all sizes stackable)
Rebar Size	Wire mesh - 20M bar (all in the same clip)
Colour -	Concrete Grey
Material -	Reinforced, high impact polypropylene
Chemical Resistancy -	Excellent
Packaging -	In heavy-duty UV protected poly bags Quantity varies by size
Installation -	Clip on to mesh and up to 20M rebar Stackable to create any size Can straddle bottom steel bars Spacing depends on loads

SIZING

PART #	HEIGHT	HEIGHT	PC/BAG	BAG/PALLET	PC/PALLET
SC1.0	1"	25MM	350	25	8750
SC1.25	1-1/4"	32MM	350	25	8750
SC1.5	1-1/2"	40MM	250	25	6250
SC1.75	1-3/4"	45MM	250	25	6250
SC2.00	2"	50MM	250	25	6250
SC2.25	2-1/4"	58MM	200	25	5000
SC2.50	2-1/2"	63MM	200	25	5000
SC2.75	2-3/4"	70MM	150	25	3750
SC3.00	3"	75MM	150	25	3750
SC3.25	3-1/4"	77MM	100	25	2500
SC3.50	3-1/2"	85MM	100	25	2500
SC3.75	3-3/4"	92MM	100	25	2500
SC4.00	4"	100MM	100	25	2500

X-CHAIR



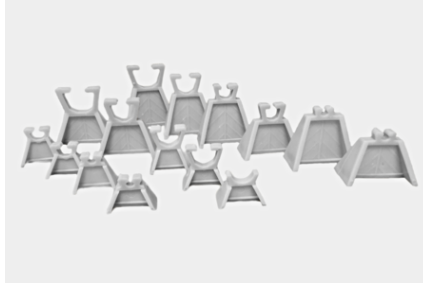
The X-Chair is designed to support reinforcing rebar. It is made of strong and durable plastic and is able to keep its shape even in harsh climates. These chairs feature round nibs on each side of the legs for easy and quick placement. X-Chairs are available in 1/2", 3/4", 1" and 1-1/2" sizes.

Size Available -	1/2", 3/4", 1", 1-1/2"
Colour -	Concrete grey
Material -	Reinforced, high impact polypropylene
Strength -	A minimum of 400lbs / chair
Chemical Resistancy -	Excellent
Packaging -	In heavy-duty UV protected poly bags Quantity varies by size

SIZING

PART #	HEIGHT	HEIGHT	PC/BAG	BAG/PALLET	PC/PALLET
AMXC - 050	1/2"	15MM	2,000	50	100,000
AMXC - 075	3/4"	20MM	2,000	50	100,000
AMXC - 100	1"	25MM	1,000	50	50,000
AMXC - 150	1-1/2"	40MM	1,000	50	50,000

ROD SPACER



Art Mould's Reinforcing Rod Spacers are used for supporting wide spaced light steel in slab construction. Simply snaps on and holds, no wiring necessary. Can be used in horizontal or vertical applications. Ideal for precast or prestressed.

Size Available -	3/4", 1", 1-1/2", 2"
Colour -	Concrete grey
Material -	Strong polyethylene
Chemical Resistancy -	Excellent
Packaging -	In heavy-duty UV protected poly bags Quantity varies by size
Installation -	Snaps onto reinforcing bars or wire mesh

SIZING

PART #	MODEL	SPACE/COVER		ROD SIZE RANGE	PC/BAG
		HEIGHT	HEIGHT		
RS75-3/16	75-3/16	20MM	3/4"	4MM-6MM 3/16"-1/4"	1000
RS75-1	75-1	20MM	3/4"	9MM-12MM 3/8"-1/2"	1000
RS75-2	75-2	20MM	3/4"	15MM-25MM 5/8"-1"	1000
RS100-3/16	100-3/16	25MM	1"	4MM-6MM 3/16"-1/4"	1000
RS100-1	100-1	25MM	1"	9MM-12MM 3/8"-1/2"	1000
RS100-2	100-2	25MM	1"	15MM-20MM 5/8"-1"	1000
RS150-1	150-1	40MM	1-1/2"	4MM-6MM 3/16"-1/4"	250
RS150-2	150-2	40MM	1-1/2"	9MM-12MM 3/8"-1/2"	250
RS150-3	150-3	40MM	1-1/2"	15MM-22MM 5/8"-7/8"	250
RS150-4	150-4	40MM	1-1/2"	25MM-30MM 1"-1 1/4"	250
RS200-1	200-1	50MM	2"	4MM-6MM 3/16"-1/4"	250
RS200-2	200-2	50MM	2"	9MM-12MM 3/8"-1/2"	250
RS200-3	200-3	50MM	2"	15MM-22MM 5/8"-7/8"	250
RS200-4	200-4	50MM	2"	25MM-30MM 1"-1 1/4"	250

TYPE-A



TYPE-A

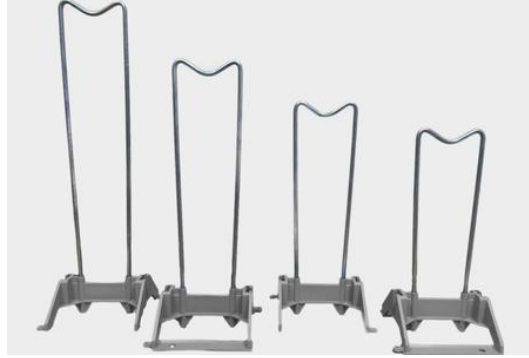
Type A High Chairs are used for supporting upper slab steel in slabs directly or by means of a carrier bar. The chair base is standard for all sizes up to 10" and is made of high impact material. The cradle is made with 1/4" wire. Lightweight for handling yet strong and stable.

TYPE-A SAND PLATE

Type A Sand Plates are designed for use with the Type A High Chair. The chair base simply slides into slots on the plate for a snug connection. Chairs with sand plates are used for slabs on grade with sand, foam and vapour barrier. Can be shipped as a complete unit or separately for quick and easy assembly at the job site.

Size Available Type-A -	2-1/2" to 10" every 1/2" (1/4" sizes available on request)
PART #	AHC (include requested size with PART #)
Colour -	Concrete grey
Material -	BASE reinforced, high impact material CRADLE cold draw steel wire
Strength -	A minimum of 400lbs / chair
Chemical Resistancy -	Good
Packaging -	In heavy-duty cartons Quantity varies by size
Installation -	Place chairs on deck forms Place reinforcing bar on wire cradle and tie rebar to cradle
Sand Plate -	Type-A - available with sand plates (separate)

TYPE-B



Type B High Chairs are used in thicker slabs. The Chair base is standard for all sizes up to 20" and is made from high impact material. The cradle is made with 1/4" wire. Lightweight for handling yet strong and stable.

Also available with Sand Plate attached.

Size Available Type B -	10" to 20" every 1/2" (1/4" sizes available on request)
PART #	BHC (include requested size with PART #)
Colour -	Concrete grey
Material -	BASE reinforced, high impact material CRADLE cold draw steel wire
Strength -	A minimum of 400lbs / chair
Chemical Resistancy -	Good
Packaging -	In heavy-duty cartons Quantity varies by size
Installation -	Place chairs on deck forms Place reinforcing bar on wire cradle and tie rebar to cradle
Sand Plate -	Type-B - available with sand plates (attached)

WAGON WHEELS



Art Mould's Clip on Circular Chairs, commonly known as "WAGON WHEELS" are versatile chairs and ideal for vertical bar supports in walls, beams or columns. Wagon Wheels simply snap on to vertical bars, keeping forms and tubes a constant distance from steel. Packaged in UV protected poly bags for convenience of carrying around job sites.

Size Available -	1", 1-1/2", 2", 3"cover
Colour -	Natural
Material -	Strong, flexible polyethylene
Chemical Resistancy -	Excellent
Packaging -	In heavy-duty UV protected poly bags
Installation -	Snap opening onto either stirrups or vertical or horizontal bars

SIZING

PART #	BAR/COVER	BAR/COVER (MM)	PCS/ BAG	BAG/ PALLET	PC/ PALLET
AMWW-10-25	1/2" X 1"	10M X 25MM	800	25	20,000
AMWW-15-25	5/8" X 1"	15M X 25MM	600	25	15,000
AMWW-15-28	5/8" X 1 1/8"	15M X 28MM	500	25	12,500
AMWW-10-40	1/2" X 1-1/2"	10M X 40MM	400	25	10,000
AMWW-15-40	5/8" X 1-1/2"	15M X 40MM	250	25	6,250
AMWW-15-50	5/8" X 2"	15M X 50MM	200	25	5,000
AMWW-75	1/2" / 5/8" x 3"	10M / 15M x 75MM	100	25	2,500

BEAM BOLSTER



HEAVY DUTY BEAM BOLSTER

Heavy Duty Beam Bolsters are designed for supporting extreme weight loads for lower slab steel from slab form. Corrugations spaced 1" on centre serve as guides for spacing bars, and legs are 2 1/2" on centre. Plastic arch design maximizes strength between legs. Supporting crossbar is made from high strength plastic coated steel, and can be bent to create any shape. Corrosion-free and lightweight for handling.

HEAVY DUTY HIGH BEAM BOLSTER

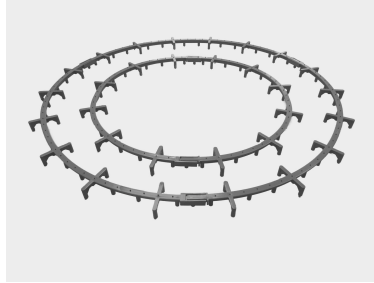
Heavy Duty High Beam Bolsters are designed for supporting top slab steel from slab form. Solid legs with arch design for heavy weight support. High strength plastic coated steel is used for supporting crossbar, which has corrugations for spacing and maintaining position of rebar. Plastic sleeve allows Bolster to be fitted end to end for easy use.

Size Available -	3/4", 1", 1-1/2", 2", 2-1/2", 5", 5-1/2", 6", 6-1/2", 7"
Colour -	Concrete grey
Material -	Impact resistant, weatherable poly resin
Strength -	A minimum of 400lbs / Lin Foot Legs are 2-1/2" spacing Plastic coated steel wire top runner
Chemical Resistancy -	Excellent
Packaging -	In heavy-duty cartons for ease of transporting to and around job site Individual pieces are 5ft in length
Installation -	Lay legs flat on deck Place or roll bars over bolster Spacing depends on loads Rebar - All

SIZING

PART #	HEIGHT	HEIGHT	FT/BOX	BOX/PALLET	FT/PALLET
BB0.75	3/4"	20MM	500	32	16,000
BB1.0	1"	25MM	500	28	14,000
BB1.5	1-1/2"	40MM	300	28	8,400
BB2.0	2"	50MM	250	28	7,000
BB2.5	2-1/2"	63MM	200	32	6,400
BB5.0	5"	125MM	50	60	3,000
BB5.5	5-1/2"	140MM	50	60	3,000
BB6.0	6"	152MM	50	50	2,500
BB6.5	6-1/2"	165MM	50	50	2,500
BB7.0	7"	178MM	50	50	2,500

SLAB BOLSTER



Art Mould's Slab Bolsters provide high weight load support for slab, precast, post-tension, tilt-wall and parking garage applications. Available in 30" lengths, they are lightweight, can be used individually, or snapped together with a unique clip designed for easier and quicker installation. Leg spacing is 2 1/2" with 1" bar guides and the arch design maximizes strength to reduce deflection between legs.

Size Available -	3/4", 1", 1-1/4", 1-1/2", 1-3/4", 2", 2-1/4", 2-1/2", 2-3/4", 3"
Colour -	Concrete grey
Strength -	Impact resistant, weatherable temperature resistant resin Leg spacing is 2-1/2" with an arch design that maximizes strength to reduce deflection between legs
Chemical Resistancy -	Excellent
Packaging -	In heavy-duty cartons for ease of transporting to and around job site Individual pieces are 30" in length or Pre assembled in 5ft lengths and bundled
Installation -	Lay legs flat on deck Snap together with unique clip design for easier and quicker installation Place or roll bars over bolster Spacing depends on loads

SIZING

2-1/2 FT LENGTHS - BOXED							
PART #	HEIGHT	HEIGHT	PC/BOX	FT/BOX	PC/PALLET	FT/PALLET	BOX/PALLET
AMSB-07	3/4"	20MM	150	375	3,600	9,000	24
AMSB-100	1"	25MM	120	300	2,880	7,200	24
AMSB-125	1-1/4"	32MM	100	250	2,400	6,000	24
AMSB-150	1-1/2"	40MM	90	225	2,160	5,400	24
AMSB-175	1-3/4"	44MM	80	200	1,920	4,800	24
AMSB-200	2"	50MM	70	175	1,680	4,200	24
AMSB-225	2-1/4"	57MM	70	175	1,680	4,200	24
AMSB-250	2-1/2"	63MM	60	150	1,440	3,600	24
AMSB-275	2-3/4"	70MM	60	150	1,440	3,600	24
AMSB-300	3"	76MM	50	125	1,200	3,000	24

PRE SNAPPED 5FT LENGTHS - BUNDLED							
PART #	HEIGHT	HEIGHT	PC/BOX	FT/BOX	PC/PALLET	FT/PALLET	BOX/PALLET
AMSB-075SP	3/4"	20MM	75	375	1,800	9,000	24
AMSB-100SP	1"	25MM	60	300	1,440	7,200	24
AMSB-125SP	1-1/4"	32MM	50	250	1,200	6,000	24
AMSB-150SP	1-1/2"	40MM	45	225	1,080	5,400	24
AMSB-175SP	1-3/4"	44MM	80	200	960	4,800	24
AMSB-200SP	2"	50MM	35	175	840	4,200	24
AMSB-225SP	2-1/4"	57MM	35	175	840	4,200	24
AMSB-250SP	2-1/2"	63MM	30	150	720	3,600	24
AMSB-275SP	2-3/4"	70MM	30	150	720	3,600	24
AMSB-300SP	3"	76MM	25	125	600	3,000	24

REBAR SAFETY CAPS



Art Mould's Rebar Safety Caps provide the protection workers need at construction and pre-cast sites. Protect your employees from exposed rebar with standard all plastic Rebar Safety Caps and Steel Reinforced OSHA Compliant Anti Impalement Safety Caps.

SIZING

ANTI IMPALEMENT REBAR SAFETY CAPS - OSHA

PART #	ANTI IMPALEMENT REBAR SAFETY CAPS - OSHA	REBAR SIZE
AIS	SMALL	10M - 25M
AIL	LARGE	20M - 35M

REBAR SAFETY CAPS

PART #	REBAR SAFETY CAPS	REBAR SIZE
SCS	SMALL	10M - 30M
SCL	LARGE	25M - 50M

FORM SPREADERS



Plastic Form Spreaders eliminate the need of cutting and placing wood strips and reduces patching and grouting needs. The Form Spreaders are corrosion free and reduce water penetration.

SIZING

PART #	HEIGHT	HEIGHT	PC/CTN	CTN/PALLET	PC/PALLET
FS-150	6"	150MM	200	24	4,800
FS-200	8"	200MM	150	24	3,600
FS-250	10"	250MM	100	24	2,400
FS-300	12"	300MM	100	24	2,400

POLYSERTS



Polyserts are the ideal fixing points in concrete, precast concrete and terrazzo for installation of Window and Door Frames, Door Jambs, Curtain Tracks, Ceiling and Wall Strapping. Polyserts are distinctively colour coded and easily located when form work has been removed. They protect the shanks of wood and lag screws or nails from the damaging corrosion effects of alkali. Drilling of pilot holes of the appropriate size facilitates screw entry. Easily installed from either inside or outside of wood formwork or pressed into position on exposed surfaces of freshly poured concrete. Any part of the fixing faces or exposed sides of Polyserts may be used without losing holding strength.

SIZING

PART #	COLOUR	HEIGHT (L x W x D)	PC/CTN	CTN/PALLET	PC/PALLET
RS-GREEN	Green	1" x 3/4" x 1-1/2" 25MM x 20MM x 40MM	1,000	24	24,000
RS-BLUE	Blue	2" x 3/4" x 1" 50MM x 20MM x 25MM	1,000	24	24,000
RS-RED	Red	2" x 3/4" x 1-1/2" 50MM x 20MM x 40MM	500	24	12,000
RS-GREY	Grey	2" x 3/4" x 1-1/2" 50MM x 20MM x 40MM	500	24	12,000
RS-YELLOW	Yellow (Special order)	1" x 3/4" x 1" 25MM x 20MM x 25MM	1,000	24	24,000



Art Mould Plastics

49 Skagway Avenue, Toronto, ON M1M 3T9

416-261-6118

1-800-605-3934

sales@artmould.ca

www.artmould.ca

