

No lake access from Resort Please do not trespass

Hector Falls
Seneca Lake



Private Residence
Please Do Not
Trespass

Waterfalls

Creek

- 39
- 38
- 37
- 36
- 35
- 34
- 33
- 32
- 31

Lake View Cabins

P Parking available at each cabin

Walking Trails

POND
No Swimming

Lakeside resort

3812 bistro

Southern property boundary Please do not trespass

This area not to scale

NO PARKING
ACTIVE DRIVEWAY

UNLOADING ZONE

NO PARKING

PPPPPPPP



Gazebo



Fire Pit

Fired up daily!
weather permitting

Guest Lounge open
daily 7 am - 9 pm

Creekside Cabins

- 9
- 10
- 11
- 12
- 14
- 15
- 16

PP

Garden Cabins

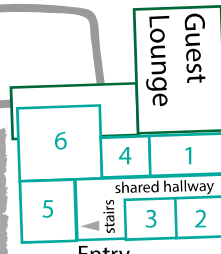
- 19
- 17
- 18

Fire Ring

PPPPPP

3812 Bistro
7:30 am - 10 pm daily

Reception
CHECK-IN



Budget Lodge
Rooms
(upper level)

PPPPPPPPPP

PPPPPPPP

State Highway 14

Watkins Glen 3 miles →