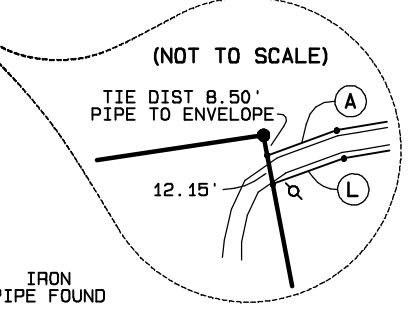
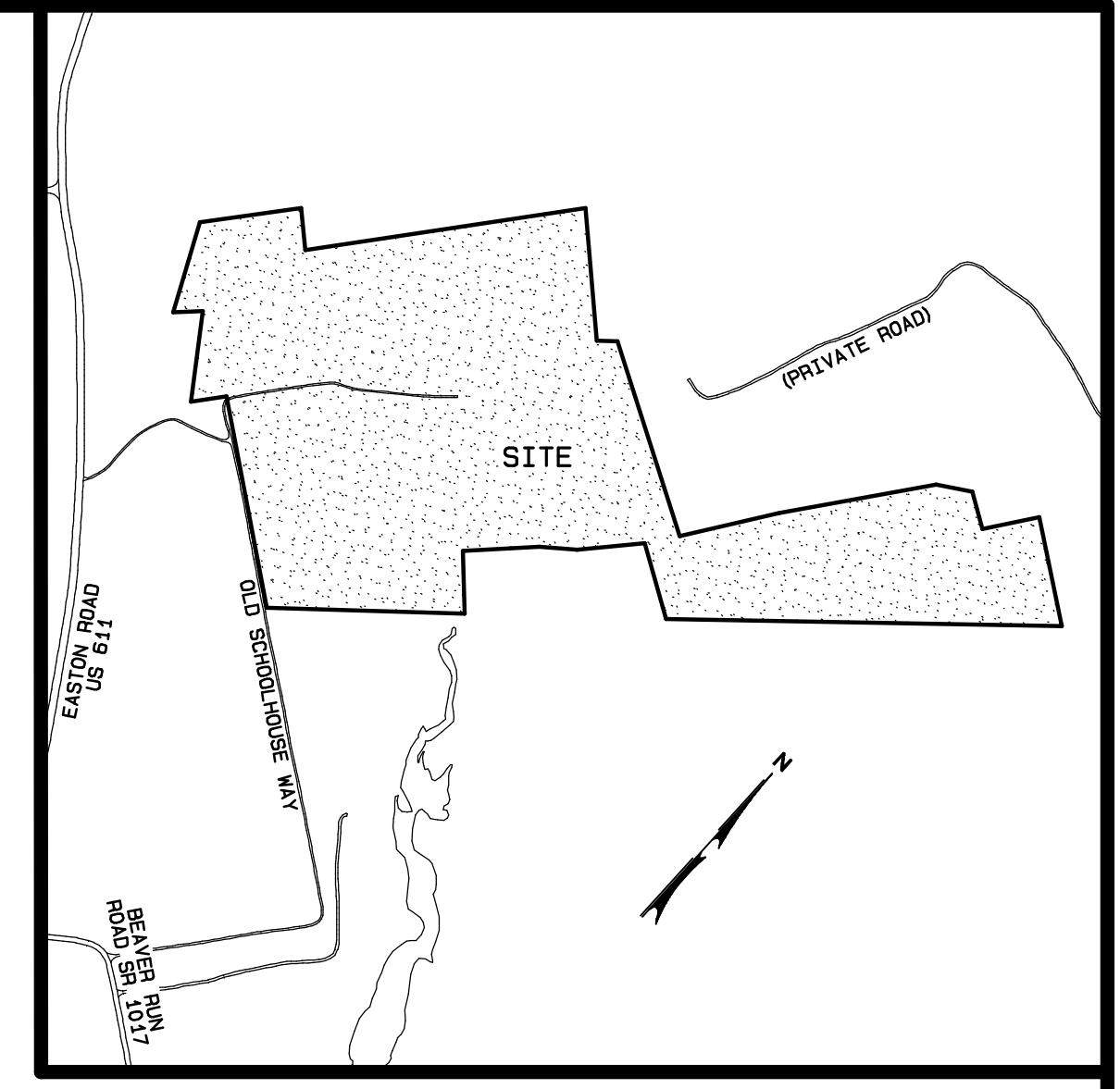
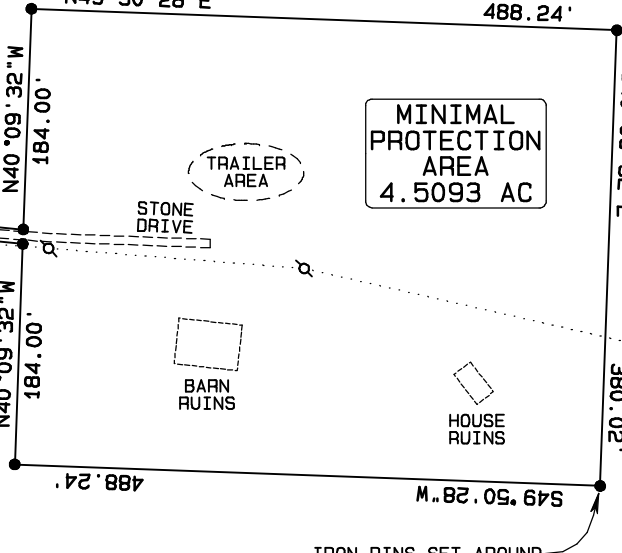


METES & BOUNDS FOR DRIVE/LANE PORTION OF BUILDING ENVELOPE

A	N27°53'01\"E	30.74'
B	N38°21'40\"E	184.29'
C	R=4012.00'	A=209.70'
D	N41°21'21\"E	38.84'
E	R=131.00'	A=64.77'
F	R=339.00'	A=96.95'
G	R=251.00'	A=100.38'
H	R=119.00'	A=58.83'
I	S41°21'21\"W	38.84'
J	R=4000.00'	A=209.07'
K	S38°21'40\"W	183.19'
L	S27°53'01\"W	31.57'



HIGHEST PROTECTION AREA  
84.0000 AC

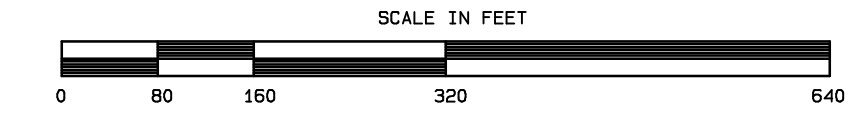


LOCATION MAP  
SCALE IN FEET 1"=600'  
BASED ON BUCKS COUNTY TAX MAPPING RECORDS

- GENERAL NOTES
- 1) BEARING BASIS FOR THE BOUNDARY RETRACEMENT SURVEY HAS BEEN REFERENCED TO NAD83 PA STATEPLANE COORDINATE SYSTEM, (SOUTH ZONE).
  - 2) BOUNDARY LINE DETERMINATION HAS BEEN REFERENCED TO "BOUNDARY RETRACEMENT PRINCIPLES AND PROCEDURES FOR PENNSYLVANIA", AS PREPARED BY KNUIT EVERETT HERMANSEN, PH.D., PLS., PE., ESQ. (COPYRIGHT 2004).

TAX #30-11-198  
88.5093 AC

PLAN OF CONSERVATION EASEMENT FOR  
**FARBOTNIK**  
NOCKAMIXON TOWNSHIP, BUCKS COUNTY, PA.  
SCALE: 1"=160'  
30 NOV 2012



DWN: RTD      CHKD: DML      APPD:  
SHEET 1 OF 1      FILENAME: FAR1.PRO

THIS PLAN WILL BE CONSIDERED INVALID UNLESS AFFIXED WITH ORIGINAL SEAL.

DENNIS M. LITZENBERGER  
PROFESSIONAL LAND SURVEYOR  
128 SCHOOL DRIVE KINTNERSVILLE PA 18930 (610) 847-5108

DENNIS M. LITZENBERGER  
PROF LAND SURVEYOR  
PA REG #37816E