

Regular Sale Every Tuesday

9:30 am Hay/Straw
 11:00 am Springers, Dairy Cows, Breeder Bulls
 12:00 pm Sheep, Goats, Hogs
 Followed by Bull & Heifer Calves
 2:00 pm Feeders
 3:00 pm Butcher Bulls, Fats & Cows

601 E Lake St
 PO Box 279



Topeka, IN 46571



Phone (260) 593-2522
 Fax (260) 593-2258

Owners:
 Rick & Andrea Welsh
 AC31600016

www.topekalivestock.com

SPECIAL SALES

Springer 9/10
 Feeder 9/15

J&S Labor Day Pony Auction 9/7

Morgan Classic 9/11 & 9/12

Fall Frenzy Buggy Horse Sale 9/18

Market Report 8/25* 329 Total Head Sold

DAIRY

Springers	4	Top of \$1410
Dairy Cows	5	Top of \$1440
Heifer Calves	46	Top of \$ 90
Breeder Bulls	3	Top of \$1160

FEEDERS & DAIRY FEEDERS

Dairy Feeders	7	Top of \$910
Feeder Cattle	5	Top of \$.894

SHEEP/GOATS/HOGS

Sheep	25	\$63-\$129
Goats	15	\$95-\$212.50/Head
Hogs	2	\$2-\$13

HAY & STRAW

Hay	10 loads	\$150-\$260/ton
	5 loads	\$210-\$260 \$237/ton
	8 loads	\$ 95-\$195 \$158/ton

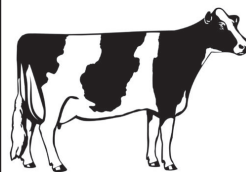
SLAUGHTER

Cows	73	Top of \$69.50	Overall (57.61 avg)
		Top 10 \$67-\$69.50	(\$68.35 avg)
		Top 20 \$64-\$69.50	(\$66.70 avg)
		Top 40 \$58-\$69.50	(\$63.56 avg)
		Bottom 20 \$18-\$53.50	(\$46.53 avg)
Mixed	36	Top of \$98.50	
Holsteins		Top of \$94	
Bulls	6	Top of \$103	
Organic	28	Top of \$69	

BULL CALVES

Bull Calves	74	\$.02-\$1.30 (\$.94 overall avg)
	Top 10	\$1.20-\$1.30/lb. (\$1.22/lb. avg)
	Top 25	\$1.15-\$1.30/lb. (\$1.18/lb. avg)
	Top 50	\$.85-\$1.30/lb. (\$1.10/lb. avg)

A Note from Rick: Steady markets at TLA this week. There were no significant changes in any of the markets on Tuesday to highlight. The Hay market has been very steady all summer with a limited volume being sold each week. Good quality, 1st cutting, courser type hay ranges from \$140-\$190. Good quality, finer stemmed hay ranges from \$200-\$280. Dairy cattle prices have remained a little stronger over the past month or two with the top end bringing from \$1250-\$1500. Calf prices continue to remain very steady as well with the big calves ranging from \$.90-\$1.20. Feeder prices have been staying around \$1.00/lb. give or take on both Holstein heifers and Holstein steers. Slaughter cows have been very strong over the last couple of weeks, in part due to a few less numbers. Utility and commercial cows are ranging from \$.60-\$.70. Cutter and canners are from \$.40 to \$.55. Holstein steers remained unchanged ranging in the mid 80's to low 90's along with bulls. We are gearing up for a busy fall season in the Horse Arena beginning with the Labor Day Pony Sale on September 7th, followed by The Morgan Classic Auction on September 11-12 and the Fall Frenzy Buggy Horse & Pony Sale on September 18. October is going to be a fun month as usual with the Alternative Animal Auction, Friesian Fall Classic, Driving Horse Auction and our Fall Draft Horse, Equipment and Carriage Auction. We are looking forward to being busy! See you at TLA!



Selling Tuesday, Sept 8th
 45-50 cows
 Closed herd AI sired for 20 yrs.

62 lbs. 3.8 Fat 2.9 Protein 150,000 SCC
 15 1st lactation • 15 2nd lactation • 15 3rd & older
 Approximately 20 head fresh since 5/1



J&S AUCTIONS Labor Day Pony Auction
& REAL ESTATE, LLC

September 7th 8:30 am



Sept. 11th-12th



**For cattle consultations or appraisals, call Rick Welsh (219) 363-2900