



201 TRAIL RD. HERSHEY, PA 17033 717-298-1845

Hope Springs Farm Quarterly Newsletter

Winter 2014

IN THIS ISSUE

Thinking Spring!

by Ashlee Bargo

The frigid temperatures have finally brought us to February, but it seems there is no rest for the weary! Seeds have been selected and purchased, and the growers have begun the planting process in the greenhouse. The greenhouse has been a nice escape to tropical-like temperatures on the cold, snowy days at the farm.

The new year has brought us some new family members!. On New Year's Day, Eve the soay lamb was born. Ten days later, Peanut and Nova joined the herd. We also welcomed five baby piglets and a new flock of baby peeps (hens) in January.

The growers have begun menu planning, and are attempting new recipes for everyone to try. Chili cook off week has thus far, been a great success. We are excited to continue volunteering in our local community, and have even added new sites. The growers will be visiting a local nursing home and Paxton Street Ministries,

where they will take sheep wool to teach the residents about some craft projects we make at the farm.

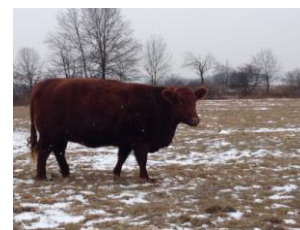
For the holiday season, the growers participated in several community activities, including visiting the Governor's Mansion, touring the Capitol Building and visiting the train display at the Hershey Historical Society. Many cookies were baked, and sampled, and then taken to local nursing homes along with a carol sing-a-long. Our first ever Cookie Sale was a great success, despite some snow.

While we have enjoyed sledding down the hill, throwing snow balls and painting in the snow with food coloring, all of us here at Hope Springs Farm are "THINKING SPRING" and hoping that the groundhog sees his shadow. Or wait, is it the opposite? I think the cold is getting to my brain cells.

Page 1: Get an update from our Program Director, Ashlee Bargo



Page 2: Check out what we have been up to at the farm and our outings in the community



Page 3: A message from HBH President, Dr. Howard Rosen

Page 4: Staff Spotlight: Kelly Fahnestock! See what Kelly has to say about HSF

In other news, our newest employee, Hope, the office cat, will be getting her very own ink pad to "sign" her paw when attending meetings. We apologize for any chairs that Hope may have stolen during meetings.



Making Christmas Ornaments out of our wool



Taking our baby alpaca Mimi for a walk



Brushing and cleaning Bunny



Volunteering at Lebanon County Christian Ministries



Decorating for the holidays



Picking out seeds

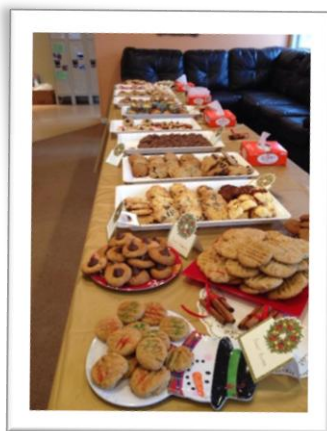
Check Out What We've Been Up To!



Making finger puppets out of our wool



Planning our gardens



Making cookies for the cookie sale



Enjoying treats at the holiday party



Caring for the new baby lambs, piglets, and chicks!



Making hot pepper jam

A Message from the President of HBH

by Dr. Howard S. Rosen, Ph.D.

In the seven months we have been operating HSF, my understanding of farm operation has grown exponentially. I am talking more with friends about the value of knowing where your food comes from and supporting small, local farms. I always realized farming was labor intensive, but there is a big difference between a theoretical understanding and a practical one. Practically speaking we had not been working the farm as it was meant, but as if it were a commercial store that could be closed down on weekends or in a bad winter storm, too many of which we have already endured. So after talking with the Advisory Board, I made the decision to expand operation to 7 days a week. We have surveyed current growers to see if anyone would like to change their attendance days or add time at the farm if they are authorized. Ashlee, Hana, and I spoke with the CMU supports coordinators at their January staff meeting so they could get a refresher on HSF and know we have available opportunities for new growers to participate in our farm community. If you are interested or know a family or individual interested in participating, please call Ashlee or speak with the Supports Coordinator.

If you have not seen the three new alpacas, Chalupa, Mimi and Maddie, take it from me they are adorable (and soft). We saw three new lambs born recently and their development curve has been astonishing to watch. Just last week we has a new brood of piglets, who will be ready for adoption soon. Apparently they make good house pets, or so I've been told.

As you see in this newsletter we are busy planning seed purchases and very much look forward to an early spring so we can spend more time outdoors.

I hope to see you at the farm quite soon!

Howard S. Rosen, Ph.D.

President

Our Staff

Ashlee Bargo - Program Director
Lori Lidle - Lead Farm Associate
Lindsey Wommer - Lead Farm Associate

Farm Associates

Doug Allen
Sharlene Bivens
Lauren Blumenstine
Ryan Cagno
Kelly Fahnstock

Ronica Foley
Madison Hartz
Caitlin Hoffman
Brian Sweger
Phil Wagoner

Hope Springs Farm Quarterly Newsletter

Hempfield Behavioral Health

2019 North 2nd Street
Harrisburg, PA 17102

717-221-8004 (Phone)

717-221-8006 (Fax)

www.hempfieldpa.com

www.hopespringsfarm.org

Staff Spotlight!

by Ashlee Bargo

My favorite thing about HSF... by Kelly Fahnstock

"I started at the farm as an intern in the fall of 2012. Since then, my love for the growers and animals has blossomed. Each day the growers bring a smile to my face and make me thankful for everything God has created. I love helping them learn and improve skills for everyday life. Most of all, my favorite part is seeing them treated as equals and enjoying life!"

Upon graduation, Kelly applied to work at the farm full time. Kelly is a wonderful asset to the farm; her love for the growers and the animals is apparent by her patient nature and constant encouragement. Kelly develops creative craft projects to match the season and to challenge the growers. We appreciate all of the hard work she does for Hope Springs Farm!

