

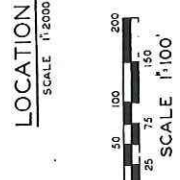
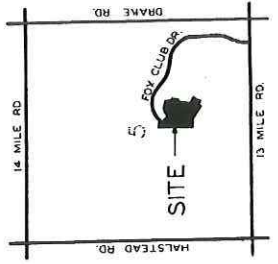
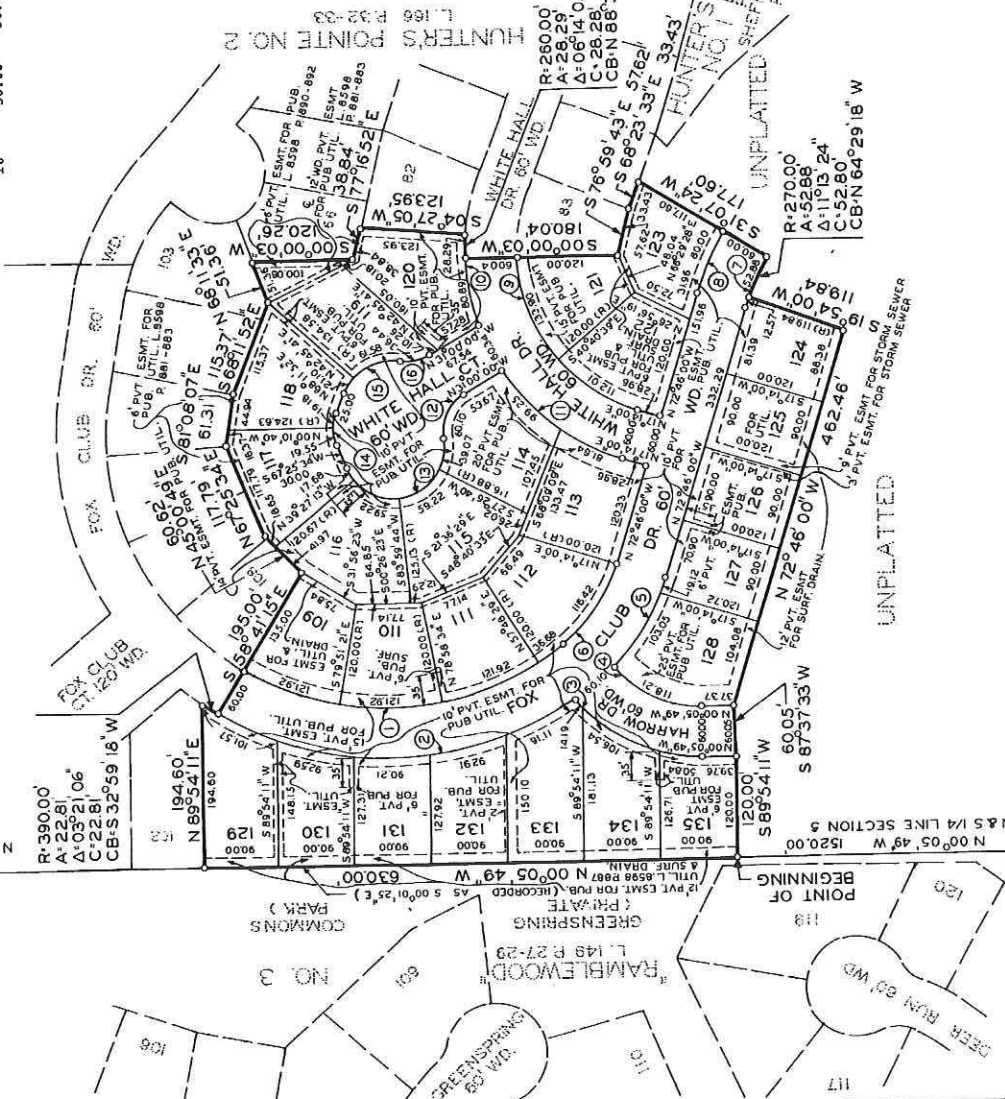
HUNTER'S POINTE NO. 4
PART OF THE SE 1/4 OF SECTION 5
T.1N., R.9E., CITY OF FARMINGTON HILLS,
OAKLAND COUNTY, MICHIGAN

PLAT LEGEND
ALL DIMENSIONS ARE IN FEET. ALL DIMENSIONS ON THE CURVE ARE MEASURED ALONG THE ARC.
(R) DENOTES RADIAL LOT LINE.
ALL LOT MARKERS ARE 3/8" IRON RODS AND ARE 18" LONG. THE SYMBOL (o) INDICATES A CONCRETE MONUMENT.
ALL BEARINGS ARE IN RELATION TO HUNTER'S POINTE NO. 2 AS RECORDED IN LIBER 166 OF PLATS, PAGES 32 & 33, OAKLAND COUNTY RECORDS.

CURVE DATA table with columns: CURVE, RADIUS, ARC, CENTRAL ANGLE, CHORD, BEARING

CENTER SECTION 5 T.1N., R.9E.

HUNTER'S POINTE NO. 3
L.104 P.6-7



SURVEYOR'S CERTIFICATE

I, Eugene F. Zeimet, surveyor certify, that I have surveyed, divided and mapped the land shown on this plat described as follows: Hunter's Pointe No. 4; part of the S.E. 1/4 of Section 5, T. 1 N., R. 9 E., City of Farmington Hills, Oakland County, Michigan, beginning at a point said point being distant N 00° 05' 49" W. 1520.00 feet along the N.E. 1/4 line of said Section 5 said line also being the easterly line of Rambledwood Commons (Park) No. 3 as recorded in Liber 166, Page 32 of said Section 5; thence from said point of beginning continuing along said N. & S. 1/4 line and said Rambledwood No. 3 N. 00° 05' 49" W. 630.00 feet; thence the following eight courses along Hunter's Pointe No. 3 as recorded in Liber 184 Pages 6 & 7 of Plats, Oakland County records N. 89° 54' 11" E. 194.60 feet and 22.81 feet along an arc of a curve to the left, radius 390.00 feet, central angle 120° 21' 06", chord length 271.11 feet 195.00 feet and N. 45° 00' 49" E. 29.62 feet and N. 67° 25' 13" E. 117.79 feet and S. 81° 08' 10" E. 61.31 feet and S. 69° 11' 52" E. 115.37 feet and N. 68° 11' 13" E. 51.36 feet; thence the following seven courses along Hunter's Pointe No. 2 as recorded in Liber 166, Pages 32-33 of Plats, Oakland County records S. 00° 00' 03" W. 120.26 feet and S. 77° 16' 52" E. 38.84 feet and S. 04° 27' 05" W. 123.35 feet and 28.29 feet along an arc of a curve to the left, radius 250.00 feet, central angle 105° 05' 05", chord length 195.00 feet and S. 26° 28' 28" E. 180.04 feet and S. 65° 59' 43" E. 57.52 feet and S. 68° 23' 13" E. 23.43 feet; thence S. 31° 07' 24" W. 177.60 feet; thence 52.88 feet along an arc of a curve to the left, radius 270.00 feet, central angle 113° 24', chord length 52.80 feet and a chord, bearing of N. 54° 29' 18" W.; thence S. 19° 54' 00" W. 119.84 feet; thence S. 72° 46' 00" W. 462.46 feet; thence S. 67° 37' 33" W. 87.37 feet; thence S. 89° 54' 11" E. 1520.00 feet to the point of beginning, consisting of 27 lots, numbered 109-135 both inclusive and containing 40.608 acres.

That I have made such survey, land division and plat by the direction of the owners of such land.
That such plat is a correct representation of all boundaries of the land surveyed and the subdivision of it.

That the required monuments and lot markers have been located in the ground of that surety has been deposited with the municipality, as required by Section 125 of the Act.

That the accuracy of survey is within the limits required by Section 126 of the Act.

That the bearings shown on the plat are expressed as required by Section 126 (3) of the Act and as explained in the legend.

DATE: Oct. 10, 1985 Zeimet-Wozniak & Associates, Inc.



Eugene F. Zeimet
28150 Franklin Road
Southfield, Michigan 48034

HUNTER'S POINTE NO. 4
PART OF THE S.E. 1/4 OF SECTION 5
T. 1 N., R. 9 E., CITY OF FARMINGTON HILLS,
OAKLAND COUNTY, MICHIGAN

PROPRIETOR'S CERTIFICATE

Charter Land Corporation, a Michigan Corporation, duly organized and existing under the laws of the State of Michigan by Marvin R. Rollins, President as proprietor has caused the land embraced in this plat to be surveyed, divided, mapped and dedicated as represented on this plat and that the streets are for the use of the public; that the utility easements are private easements and that all other easements are for uses shown on the plat.

WITNESSES:
Charter Land Corporation
5600 W. Maple Rd.
West Bloomfield, Mich. 48033

Michael A. Bilyk
Michael A. Bilyk

Marvin R. Rollins
Marvin R. Rollins, President

Personally came before me this 21 day of NOVEMBER, 1985
Marvin R. Rollins, President of the above named Corporation, to me known to be the said Corporation, and acknowledged that he executed the foregoing instrument as such officer as the free act and deed of said Corporation, by its authority.
My Commission Expires: 1-18-87
Notary Public Anthony P. Pulich
Macomb County, Acting in Oakland County

PROPRIETOR'S CERTIFICATE

Manufacturers National Bank of Detroit, a National Banking Association, organized under the laws of the United States of America by Philip G. Stinson, 2nd Vice President and Donald W. Colwell, Vice President, as proprietors has caused the land embraced in this plat to be surveyed, divided, mapped and dedicated as represented on this plat and that the streets are for the use of the public; that the utility easements are private easements and that all other easements are for uses shown on the plat.

WITNESSES:
Manufacturers National Bank of Detroit
100 Renaissance Center
Detroit, Michigan 48248

Daniel E. MacDougall
Daniel E. MacDougall, Vice President

Donald W. Colwell
Donald W. Colwell, Second Vice President

Acknowledgment
State of Michigan)SS
County of Wayne

Personally came before me this 21 day of November, 1985,
Philip G. Stinson - Vice President and Donald W. Colwell - 2nd Vice President of the above named Association, to me known to be the persons who executed the foregoing instrument as proprietors of said Association, and acknowledged that they executed the foregoing instrument as such officers as the free act and deed of said Association, by its authority.
My Commission Expires: Jan. 5, 1986

Notary Public Theresa M. Wirick
Theresa M. Wirick
Macomb County, Michigan (Acting in Wayne)

COUNTY TREASURER'S CERTIFICATE

The records in my office show no unpaid taxes or special assessments for the five years preceding Nov. 21, 1985, involving lands included in this plat.

C. Hugh Oakland
C. Hugh Oakland, County Treasurer,
Oakland County

DRAIN COMMISSIONER'S CERTIFICATE

Approved on NOVEMBER 21, 1985 as complying with Section 192, of Act 288, P.A. 1967 and the applicable rules and regulations published by my office in the County of Oakland.

George W. Kuhn
George W. Kuhn, County Drain Commissioner

CERTIFICATE OF MUNICIPAL APPROVAL

I certify that this plat was approved by the City Council, of the City of Farmington Hills, Michigan, on NOVEMBER 21, 1985, as amended, and that the public sewer and water services are extended and ready for extension to the lot width and area required by Section 186, (d), Act 288 of P.A. 1967 has been waived and conforms with the zoning and subdivision control ordinances of the City of Farmington Hills and surety has been posted for placement of monuments and lot markers within a period of one year of the above date.

John R. Reynolds
John R. Reynolds, Clerk

COUNTY PLAT BOARD CERTIFICATE

This plat has been reviewed and is approved by the Oakland County Plat Board on JANUARY 16, 1986 as being in compliance with all the provisions of Act 288, P.A. 1967 and the Plat Board's applicable rules and regulations.

Lynne S. Allen
Lynne S. Allen, Register of Deeds
County Clerk

Richard S. Wilcox
Richard S. Wilcox, Chairman of the Board of County Commissioners

RECORDING CERTIFICATE
State of Michigan)SS
County of Oakland)

This plat was received for record on the 25th day of Feb, 1986
at 2:37 P.M. and recorded in Liber 187 of Plats on Pages 18-19

Lynne D. Allen
Lynne D. Allen, Register of Deeds,
County Clerk

CERTIFIED TRUE COPY
RECORDED PLAT
BY DEPARTMENT OF CLERK-EMERGENCY

By Richard E. Szymanski
Richard E. Szymanski
Manager Plat Section

Date May 21, 1986



Eugene F. Zelmec
Eugene F. Zelmec