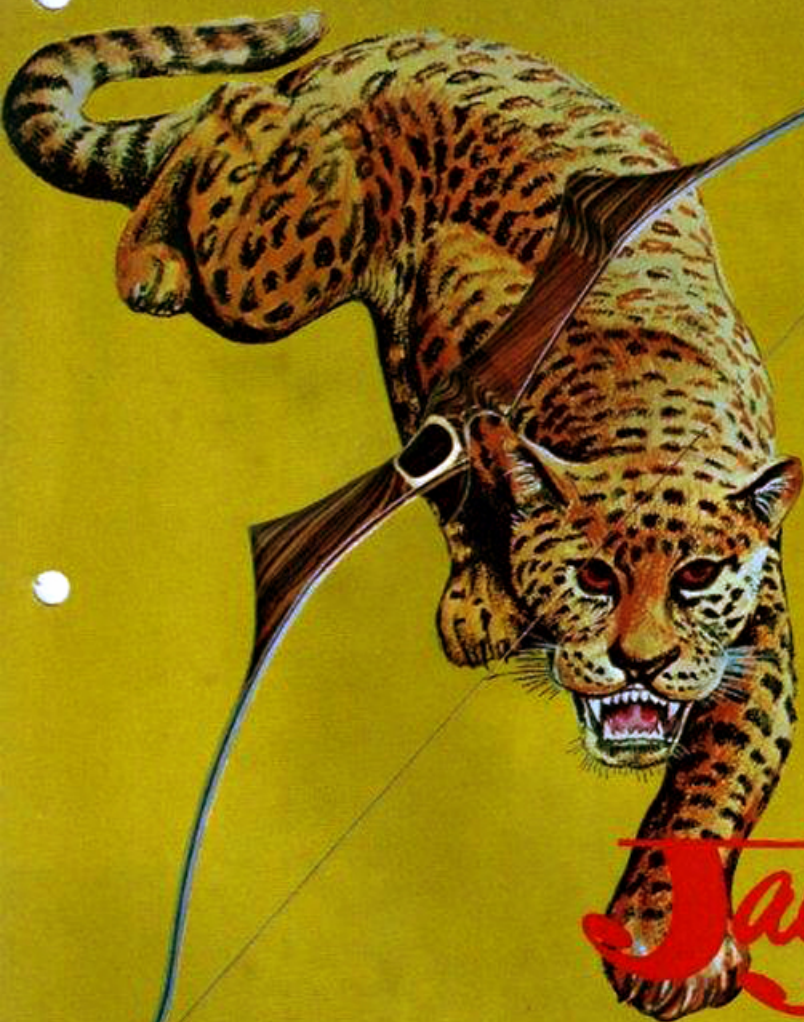




TRI-STATE ARCHERY CORP.



*Jaguar*

WORLD'S FINEST BOWS  
for

**1963-1964**



when you buy bows  
made by the  
**UNITED STATES ARCHERY CO.**  
you're getting

## THE FINEST BOWS

known the world over—  
—OVER 130,000 SOLD!

Here, from USAC, is the most versatile and beautiful selection of bows in the world. They are the result of great imaginative design, finest materials, superb craftsmanship and thorough testing. These truly are the "world's finest bows".

### WHY THEY'RE THE FINEST:

#### ► 'OWENS PERMA-GLASS'

This near indestructible woven glass makes the backing and facing absolutely permanent. Stress factor in excess of 150,000 lbs. per sq. in. Not affected by extremes of heat, cold or humidity.

#### ► CORE LAMINATIONS

of rock-hard, white maple and walnut are precision ground to yield maximum efficiency in the working limbs.

#### ► 'TRUE CENTER SHOT' WINDOW

featured on all models gives greatest accuracy, full view of target. Because arrow passes through center of riser section, wasted thrust and arrow whip are eliminated.

#### ► 'OWENS PISTOL GRIP'

eliminates choking, is contoured for maximum comfort. Strong, beautiful imported and domestic hardwoods are used in the riser section.

#### ► SMOOTH, STABLE DRAW

is yours on all models. The stability of the bow gives speed to the arrow, thereby increasing cast.

#### ► DURABLE, LUSTROUS FINISH

enhances the beauty of bow, makes it moisture-proof.

### DOUBLE STABILIZED MODELS

Another remarkable USAC achievement! DOUBLE STABILIZED MODELS are unique! Unlike other bows which are only single stabilized (either on front or back) USAC models are stabilized on both front and back. Hand twisting is actually eliminated... highest stability ever is thus achieved!

#### ► 3 YEAR GUARANTEE

registered in the owner's name covers both materials and workmanship.

AVAILABLE FROM FRANCHISED DEALERS

## TEXAN 62<sup>11</sup>

Top Shooting at a Budget Price

### —SPECIFICATIONS—

Length... 62"  
Draw Limit to 30"  
Weights to 44 lbs.  
Sight Window 6"



You'll never find another bow like the Texan in its price range. It has no equal! Full working recurves, twist-free limbs make it a fast, sturdy, true-to-the-mark bow. Rare, imported hardwoods are featured, artfully sculptured to a form-fitting pistol grip handle with full center shot. Whether on hunt or target, it will give you the thrill of much higher priced models.

15-44 lbs. **\$32.50**

\$37.50 for 45-60 lbs.

Add 10% for weights over 60 lbs.





## FLORIDIAN 66"

Versatile Economy Bow

### —SPECIFICATIONS—

Length... 66"  
Draw Limit to 31"  
Weights to 35 lbs.  
All Weights at 28"  
Sight Window 7"  
Fist Mele 7" to 8"



Here is a new, rugged, inexpensive bow that is already famous for its versatility. It's the ideal all-round bow, perfect for all kinds of shooting. And the shooting will be perfect... thanks to the exclusive Owens Pistol Grip, full center shot plus true deflex, reflex and recurve. Hand-selected costly solid or laminated hardwoods used (please do not specify). For target or hunt, you'll favor the Floridian.

Up to 35 lbs. **\$ 30.00**

\$35.00 for 36-50 lbs.  
Over 50 lbs. add \$5.00



## ALL-AMERICAN

The Beginner's First Bow

### —SPECIFICATIONS—

Length... 52"  
Draw Limit to 26"  
26" Weights to 35 lbs.  
Sight Window 4 1/4"

Young America will find the All-American the ideal beginner's bow. Featuring satin-smooth draw, the All-American is extra short but tough... inexpensive but extremely well made. Has full working recurves, full-center-shot handle. Want a 'first' bow? Here it is.

15 to 35 lbs.

**\$ 19.95**

36 to 41 lbs.

**\$ 24.95**

42 to 50 lbs. **\$32.50**

## VIRGINIAN 60"

Smart Asset for Target or Hunt

### —SPECIFICATIONS—

Length... 60"  
Draw Limit to 30"  
Weights to 35 lbs.  
All Weights at 28"  
Sight Window 6"  
Fist Mele 7" to 8"

In the field or at the shooting line, you'll welcome this new addition to the USAC line of quality bows. Everything about it is expensive but the price. Full center shot. Absolute deflex, reflex, recurve. Genuine Owens Pistol Grip. Laminated or solid hardwoods (please do not specify). Here is accurate shooting!

Up to 35 lbs. **\$ 26.95**

\$31.95 for 36 to 50 lbs.  
Over 50 lbs. add \$5.00



ALL USAC BOWS ARE AVAILABLE

## PENNSYLVANIAN 60"

Favorite of the Skilled Game Hunter

Now! Double Stabilized!

### —SPECIFICATIONS—

Length ... 60"  
Draw Limit to 31"  
Weights to 60 lbs.  
Sight Window 6"  
Fist Mele 7" to 8"



The Pennsylvanian is now better than ever because it's double stabilized, eliminating hand twisting. It now possesses stability never before attained. There's more power and accuracy, too, in addition to beauty and lightness, speed and rugged dependability. Full working recurves produced with 'Owens Perma-Glass' and a precision fast-cast compressed core. Sculptured hardwood Owens Thumb Rest and form-fitting Owens Pistol Grip handle with full center shot ... an excellent bow for women, too, with no finger pinch and stack-free draw at any weight.

To 60 lbs. **\$49.95**

Add 10% for weights over 60 lbs.

FROM FRANCHISED DEALERS

## NEW YORKER 66"

Ideal Target-Hunter Combination

### —SPECIFICATIONS—

Length ... 66"  
Draw Limit to 30"  
Weights to 60 lbs.  
Sight Window 7½"  
Fist Mele 7" to 8"



This famous bow is now made best by its unique double-stabilized feature. Now hand twisting is eliminated and stability is at its zenith. Your arrows are sure to hit their mark because the New Yorker is smooth and stable in any weight. It features exotic zebra woods, Owens Thumb Rest, Owens Pistol Grip handle with full-center-shot and fast-cast compressed core to assure full working recurves. A beautifully designed bow which gives you power plus pleasure on the hunt or at the target range.

Now! Double Stabilized!

To 60 lbs. **\$59.95**

Add 10% for weights over 60 lbs.





# Jaguar 54"

For Hunting the Big Game

with 'Tru-Life' Camouflaging

—SPECIFICATIONS—

Length ... 54"  
Draw Limit to 30"  
Weights to 60 lbs.  
Sight Window 5½"



Sight that arrow on big game ... it's yours with the tremendous smashing power of the Jaguar 54". Here's the right combination of velvet-smooth draw, fantastic cast and trustworthy stability that drives each and every arrow whizzing through thick brush straight to the mark. Imported hardwoods are laminated with tough 'Owens Perma-Glass', double tapered for uniform stress and with full working recurves. 'Owens Pistol Grip' handle and full target sight window. A beautiful precision bow!

To 60 lbs. **\$65.00**

Add 10% for weights over 60 lbs.



# CALIFORNIAN 68"

For Majestic Modern Archery

Now! Double Stabilized!

—SPECIFICATIONS—

Length ... 68"  
Draw Limit to 32"  
Weights to 50 lbs.  
Sight Window 7½"  
Fist Mele 6½" to 7½"



The Californian brings forth new dimensions of performance now that it is **double stabilized**. Handtwisting is actually eliminated. Stability is unsurpassed. Ideal for all shooting specialties, it has a full 90° working recurve, imparts more thrust even to archers with shorter draws. Jar-free shooting from double tapers in the limbs, constructed of 'Owens Perma-Glass'. Its Turkish design and beautiful zebra wood handle with true center shot and Owens Thumb Rest entitle the Californian to a place of honor among bows. It's faster than the fastest, smoother than the smoothest!

(Specify right or left hand)

To 50 lbs. **\$69.95**

Add 10% for weights over 50 lbs.



## KENTUCKIAN 54"

King of the Hunters

with 'Tru-Life' Camouflaging

### —SPECIFICATIONS—

Length . . . 54"  
Draw Limit to 28"  
Weights to 60 lbs.  
Sight Window 4 3/4"



Here's the real powerhouse among hunting bows! And all bowhunters welcome the Kentuckian's camouflaged glass which is expertly built right into the bow. This advance exactly duplicates jungle warfare uniforms and actually gives added strength and stability along with fantastic cast. Made by precision methods of tapered, rock-hard white maple laminations, giving full benefits of true working recurves — actually deflexed, reflexed and recurved beyond 90°. There is absolutely no stack due to double tapering. You'll get smooth draw, unsurpassed strength, comfort, speed and accuracy, when you choose the Kentuckian.

To 60 lbs. **\$55.00**

Add 10% for weights over 60 lbs.

## KENTUCKIAN 60"

Regent of the Hunters

with 'Tru-Life' Camouflaging

Now! Double Stabilized!

### —SPECIFICATIONS—

Length . . . 60"  
Draw Limit to 31"  
Weights to 60 lbs.  
Sight Window 6"  
Fist Mele 7" to 8"



Here is the Regent of the Hunters at its hunting best, thanks to the revolutionary new **double** stabilized feature which eliminates hand twisting! The result: stability never before equalled in a bow. Same camouflaged glass as the 54" model built right into the bow. New, sculptured Owens Thumb Rest and Pistol Grip makes shooting easier, truer. Tapered, rock-hard white maple laminations with true working recurves — actually deflexed, reflexed and recurved beyond 90°. You'll shoot fast, accurate and strong with the Kentuckian 60".

To 60 lbs. **\$59.95**

Add 10% for weights over 60 lbs.





# Jaguar

## Why Jaguar Is your Best Buy

Imagination, finest materials, unequalled know-how and superb bowyer craftsmanship — these are the reasons why, year after year, Jaguar remains the choice of knowledgeable archers. With the versatile and beautiful selection of composite bows offered by Tri-State, you can match your requirements exactly, with complete assurance that your bow is scientifically engineered and handcrafted to perfection.

Compare Tri-State's quality features with other bows . . . whether your sport is big game or small, target or tournament, you'll quickly see why Tri-State is the bow choice of experts and why well over 100,000 have been sold to date.

## QUALITY FEATURES

- + Permanent Backing and Facing of nearly indestructible woven "Owens Perma-Glass," reinforced with Epoxy resin — has stress factor of 150,000 lbs. per sq. in.; impervious to extremes of heat, cold or humidity.
- + Precision Ground Core Laminations of rock hard white maple and walnut to yield maximum efficiency in the working limbs.
- + High Strength Bonding Agent, Tikon 83 E, specifically formulated for optimum bond and flexibility.
- + "True-Center-Shot" Sight Window featured on all models, allows greatest accuracy, full view of target — eliminates wasted thrust and arrow whip because arrow passes through center of riser section.
- + Smooth Draw, High Stability are superior design factors on all models. (Example: Jaguar bow 50# weight draws only 1½ lbs. per drawn inch.) This action relates to stability and speed of the bow by giving consistent impetus to the arrow thereby increasing cast.
- + Contoured Owens Pistol Grip shaped for maximum comfort, eliminates "choking." Riser section of imported and domestic woods, selected for strength and color matched for beauty.
- + Superb Finish further enhances the beauty of the bow, provides a lustrous, durable, moisture proof coating — machine buffed for permanence.
- + Pre-Waxed Strings of double looped Dacron, reinforced at loops and center with Nylon for great wear resistance.
- + Three Year Guarantee covers all Tri-State bows for both materials and workmanship — registered in the owner's name.

Camouflaged  
Glass  
Built Right-in



## Specifications

- ... Length — 54"
- ... Draw — to 30"
- ... Weight — to 60#
- ... Sight Window — 5½"

# Jaguar "54"

## The Archer's Answer For Around The World Big Game Hunting

From armor-hid'd African rhino to fast bounding Wyoming antelope, the Jaguar "54" brings you the right combination of smashing, knockdown power with feather-like handling — a treat to carry in the field, all day — every day. Jaguar "54" is the powerhouse of bows for instant one-shot kills — it has an amazingly velvet-smooth draw, tremendous cast, and stability that drives each arrow to the mark through the thickest brush.

Precision built of imported hardwoods . . . laminated with nearly indestructible "Owens Perma-Glass," double tapered to assure uniform stress throughout and full working curves, Jaguar "54" has the exclusive Owens Pistol Grip handle and full target sight window plus all the features of beauty, unsurpassed power and precision you're looking for in a hunting bow.

(Specify right or left hand)

Price **\$65<sup>00</sup>**



*Specifications*

- ... Length — 64"
- ... Draw — to 30"
- ... Weight — to 60#
- ... Sight Window — 6"

**Lynx**

**Perfect Multi-Purpose Bow**

For all-around archery pleasure the "Lynx" offers custom features at a modest price. Superb craftsmanship is reflected in the design of its "true-center-shot" Oriental handle and reinforced rock ends . . . costly hardwoods . . . full working recurve — a truly beautiful and dependable bow.

Price *(right hand / left hand)*  
**\$59<sup>95</sup>**





**Specifications**

- ... Length — 60"
- ... Draw — to 28"
- ... Weight — to 60#
- ... Sight Window — 5½"

## Wildcat

Seasoned Game Getter

Power-packed and plenty-rugged, that's "Wildcat," the most outstanding value in a moderately priced hunting bow. Short and tough, yet light in the hand, the "Wildcat" gives amazing speed and smooth draw — features "true-center-shot, Sure Grip" handle of costly, laminated hardwoods.

(Specify right or left hand)

Price **\$47<sup>50</sup>**



**Specifications**

- ... Length — 62"
- ... Draw — to 28"
- ... Weights — to 50#
- ... Sight Window — 5½"

## Tomcat

Fast Shooting At A Low Price

Whether you're a young archer, or one growing younger by the shot, you'll find a lot to like about the "Tomcat" — a fast, sturdy, true shooting bow — engineered to give top performance on the hunt or at target. It's light but rugged — extremely fast — always dependable. With semi-working recurves, the "Tomcat" is deflexed, reflexed — an economical bow that will give every thrill of the higher priced models — features Oriental handle with full center shot.

(Specify right or left hand)

Price **\$29<sup>95</sup>**

# HAWAIIAN

Miracle Master of Tournament Archery

Now! Double Stabilized!

NOW AVAILABLE  
IN 62", 66", 70"

Here is the miracle master of tournament archery, now **double stabilized** . . . imparting greater stability, eliminating hand twisting! Together with tremendous cast and greatest "ease-off" in pounds-per-inch ever accomplished in a bow, the Hawaiian is truly a bow-making miracle. 3½ years in the making, it has been put to every conceivable test. Its unique tri-tapered laminations produce the most positive full-working recurves on the market today. Owens Pistol Grip handle guarantees ease in shooting. The Hawaiian, patterned after the famous Turkish bows, combines smooth, effortless draw and stability with consistent center-ring accuracy. It is precision made of precious hardwoods.

Length	Draw	Weights*	Sight Windows	Fist Mele
62"	30"	to 50 lbs.	7"	7½"
66"	32"	to 50 lbs.	7"	to
70"	32"	to 50 lbs.	7"	8½"

\*all weights taken at 28"

To 50 lbs. **\$79.95**

Add 10% for weights over 50 lbs.

AVAILABLE FROM FRANCHISED DEALERS





# Jaguar 68"

For Masterful Tournament Performance

—SPECIFICATIONS—

Length . . . 68"  
Draw Limit to 32"  
Weights to 60 lbs.  
Sight Window 7½"

(Specify right or left hand)

Up to 60 lbs. **\$99.95**

Add 10% for weights over 60 lbs.

The bowmaker's masterpiece . . . artistic in design, perfect in performance. The Jaguar 68" gives you smooth, effortless draw and stability, hair-splitting accuracy. This "Choice of Champions" has Owens Thumb and Palm Rests, 'Owens Pistol Grip' handle and full heel for steadiness on the line . . . full-target sight window for close shots. Uniform stress throughout . . . positive full working recurves from rock-hard white maple tapered laminations. The Jaguar 68" is one more reason why USAC bows are "truly the world's finest bows".



**UNITED STATES ARCHERY CO.**  
A DIVISION OF  
**TRI-STATE ARCHERY CORPORATION**  
7 East Franklin St., Danbury, Connecticut

PRINTED IN U.S.A.

Design: H. J. Bensen & Associates  
Lithography: Berkshire Lithographers, Inc.