

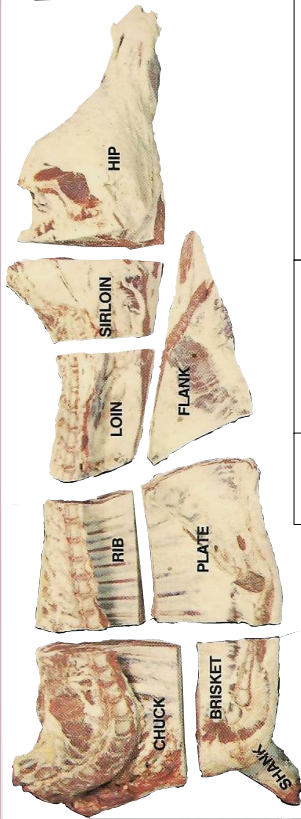
# RED DEER LAKE MEAT PROCESSING LTD.

Located a short, pleasant drive  
south of Calgary, west of  
Spruce Meadows

*Serving Southern Alberta since 1974*

Specializing in Custom Slaughter  
and locally produced Beef,  
Lamb, & Pork

## Featuring Local Alberta Beef & Lamb



### WHOLE SIDE OF BEEF

*Cut From 100% Genuine Local Alberta Dry aged Beef.*

1 Hind & 1 Front (Avg. 250-300 lbs.)

**Cut, Wrapped, Frozen & Boxed \$4.29/lb.; Uncut \$3.79/lb**

### SPLIT SIDE OF BEEF - (Half Hind and Half Front)

(Approx. Weight before cutting- 150 lbs.)

**Cut, Wrapped, Frozen & Boxed \$4.39/lb**

### FRONT OF BEEF

Rib, Chuck, & Brisket  
(Avg. 130-160 lbs.)

**Cut, Wrapped, Frozen & Boxed  
\$3.99/lb. Uncut \$3.69/lb**

### HIND OF BEEF

Hip, Long Loin, & Flank  
(Avg. 110-140 lbs.)

**Cut, Wrapped, Frozen & Boxed  
\$4.49/lb. Uncut \$3.99/lb**

Price is based on weight before cutting. Price includes cutting, Brown paper freezer wrap-  
ping, boxing, and freezing. Custom Beef slaughter also available. Call for current rates &  
slaughter booking. Custom Beef Slaughter is \$130.00 head; cut & wrap cost: 0.79/lb.

### UNCUT BEEF PRIMALS

**BEEF HIP-Bone in Whole \$4.79/lb.**

**Top( Inside) Round -Whole Bnls \$7.99/lb.**

**Bottom( Outside) Round -Whole Bnls \$7.49/lb.**

**Sirloin Tip -Whole Bnls \$7.99/lb.**

**Whole Blade (chuck)-Bone in uncut \$5.99/lb.**

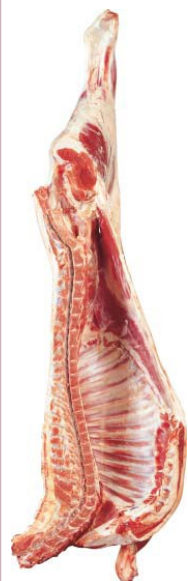
**Cross Rib-Bone In Whole uncut \$5.99/lb.**

**Brisket Plate-Bone In Whole uncut \$3.99/lb.**

**Top Sirloin Butt -Bnls Whole Uncut \$9.99/lb.**

**Strip Loin -Bnls Whole Uncut \$13.50/lb.**

See reverse  
side for more  
retail prices



Alberta Lamb

### ALBERTA LAMB

*\*Subject to availability*

Average Carcass Weight : 45-70 lbs;

*Cut, Wrapped, Frozen & Boxed*

**Carcass-\$7.99/lb. Side \$8.49/lb.**

4H Lambs

### CARCASS OF LAMB

**Uncut; Market Weight (45-70 lbs)**

4H Lambs

**\$7.49/lb.**

*\*Subject to availability*

### \*LAMB CUTS

*\*Subject to availability*

**Whole Leg Bone In-\$11.49/lb. Side Ribs-\$8.99/lb.**

**Loin Chops-\$20.50/lb. Whole Rack-\$18.50/lb.**

**Whole Shoulder Roast-Bone In-\$10.49/lb.**

**Shoulder Chops-\$11.99/lb Whole Shank-\$8.99/lb.**

**Boneless Stew-\$12.99/lb Ground Lamb-\$10.99/lb.**

### \*CARCASS OF GOAT

Average Weight : 25-40 lbs;

**Cut, Wrapped, Frozen & Boxed**

**\$12.99/lb.**

*\*Subject to availability*

### \*SIDE OF GOAT

Avg. Weight : 13-20 lbs.

**Cut, Wrapped, Frozen & Boxed**

**\$13.49/lb.**

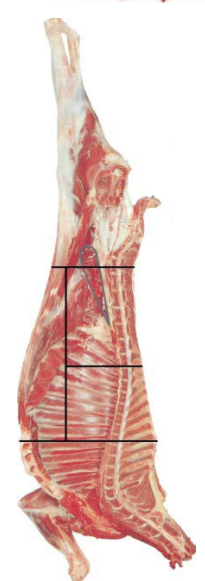
*\*Subject to availability*

### \*CARCASS OF LAMB

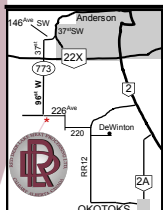
**Uncut; Head On Spring Lamb;  
Under 39 lbs**

**\$9.99/lb.**

*\*Subject to availability*



Alberta Goat



Go west on Anderson Rd  
until it turns south into 37<sup>th</sup>.  
Turn West on 146<sup>th</sup> Ave for  
one block, then South on  
37<sup>th</sup> to 22-X. Cross 22-X,  
go 5 KM south on Rte.773  
(96<sup>th</sup> W) to 4-way stop. Plant  
is located on S. E. corner.

### Main Plant Address

90093 226 Ave West  
Foothills, AB. T1S 2Z2

Ph.-403-256-4925

Fax: 403-256-8882

Email: info@rdlmeats.ab.ca

Website www.rdlmeats.ab.ca



\*Please Call 403-256-4925 to place an order.

\*Prices in effect until: **Sept 30/ 2020**

Prices are subject to change. Please Call to verify.

All our Products are from Guaranteed Natural Local  
Alberta Government Inspected Livestock