

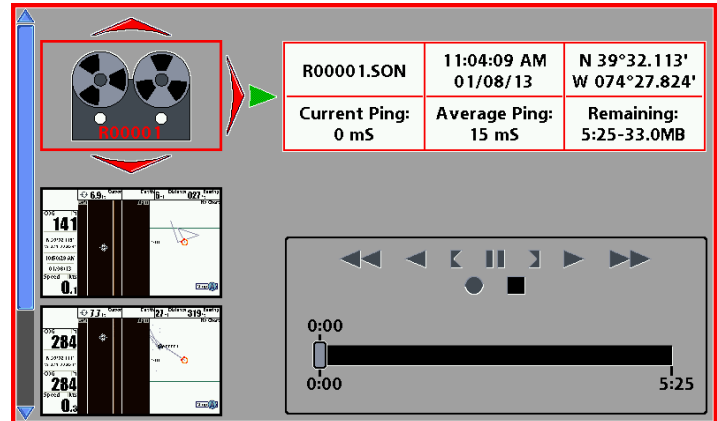
# Quick Operations Guide for Humminbird 898c

## Dockside preparations

- 1) Power up unit/EXIT to escape warnings
- 2) Insert SD card in **either slot** under the 898c label
- 3) Check read out boxes on left to insure depth and position readouts are active

## Recovery area preparations (on site)

- 1) Start Log Book entry
- 2) Press View Button to get to the Record View:
  - 1) Press Menu 1x
  - 2) Right arrow over to begin recording
  - 3) Screen will now say "Stop Recording", indicating that you are currently recording
  - 4) Exit 1x, then View button or "Hot" key to desired view
- 3) NOTE: "Recording" should be flashing at the top of any view during all on-site efforts
- 4) Press View button 3x or use Middle "hot" key to enter Side Imaging view



## Recovery efforts

### Technique #1 (using buoys as visual)

- 1) Enter desired view (either the side image/chart combination or side image only) using "hot" keys
- 2) When a crab pot is seen on screen throw buoy to approximate pot area.
- 3) Using the buoy as visual aid, deploy grapple gear and encircle buoy/pot
  - a) Once hooked in pot, retrieve line and once over pot PRESS AND HOLD "MARK" button. Waypoint # will appear on screen.
- 4) Use a larger grapple anchor to get a second, heavier line in pot and remove pot
- 5) Mark in log book the fate of this pot (include Way point #)
  - Recovered (R) /partial recovery (PR) /aborted recovery (A)

### Technique # 2 (using waypoints)

- 1) Enter desired view (either the side image/chart combination or side image only) using "hot" keys
  - a) If using combo view, press menu button once, make active side = LEFT
  - b) Exit
  - c) When a crab pot is seen on the side imaging screen, move cursor over target using the arrow button. Press and hold the MARK button. Waypoint # will appear on screen. Write down WP#.
  - d) EXIT to reactivate scrolling side scan image
- 6) Recoveries can be performed in desired view
  - a) Use recovery methods to retrieve pot or continue surveying
  - b) Mark in log book the fate of this pot (include WP #)
    - a) Recovered (R)/ partial recovery (PR)/ aborted recovery (A)
  - c) Do not erase WP #s

## Quick Operations Guide for Humminbird 898c

### End of Recovery efforts

1. Write down begin and end times for surveying/pot recovery for that day and number of pots recovered in Log Book
2. **STOP RECORDING**
  - a. From any screen view, hit Menu 1x
  - b. Arrow right in Stop Recording option
  - c. Exit
3. Export waypoints to Memory Card
  - a. In any view press "Menu" 2x.
  - b. Arrow left or right to highlight "NAV" tab and press down arrow to highlight "waypoints, routes, tracks"-Press Right arrow
  - c. Arrow up to highlight "options"-press Right arrow
  - d. Down arrow to "select all and..."- press Right arrow
  - e. Down arrow to "Export"-press Right arrow
  - f. Right arrow for "YES"

### Erasing tracks

1. With Chart as active screen (either full chart screen or split with right side "Active")
2. Menu 1x
3. Scroll down to Clear Current Track
  - a. Arrow right 2x
4. Exit to desired screen

### Erasing Waypoints

1. Please contact Stockton before deleting any "true" waypoints to verify they are saved. All erroneous or accidental points can be deleted as needed
2. In any View
  - a. Menu 2x
  - b. Arrow to NAV tab
  - c. Arrow down to Waypoints, Tracks and Routes
  - d. Arrow right
  - e. Arrow down to highlight waypoint or camera image to be deleted
  - f. Right arrow to select delete
3. To delete large quantities of waypoints
  - a. Menu 2x
  - b. Arrow to NAV tab
  - c. Arrow down to Waypoints, Tracks and Routes- Arrow right
  - d. Arrow up to "Options"- Arrow right
    - i. To delete all- arrow down to "select all and..."- arrow right>delete>Yes>
    - ii. To delete selected- arrow down to "Select multiple and..."- arrow>delete>. Select desired Waypoint # - Arrow> waypoint goes blue. Continue selecting to highlight all desired waypoints to delete.
    - iii. Arrow UP to "Done"->Yes>