

Crotched Mountain West - USGS 7.5-minute Topo



Legend

- State
- City/Town
- Turnpikes
- Interstates
- US Routes
- State Routes
- Local Roads

Map Scale

1: 50,000

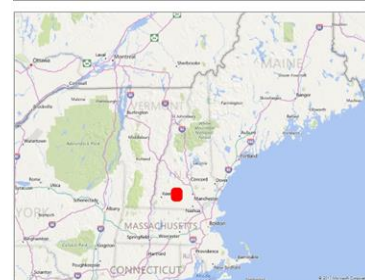
© NH GRANIT, www.granit.unh.edu

Map Generated: 6/22/2017

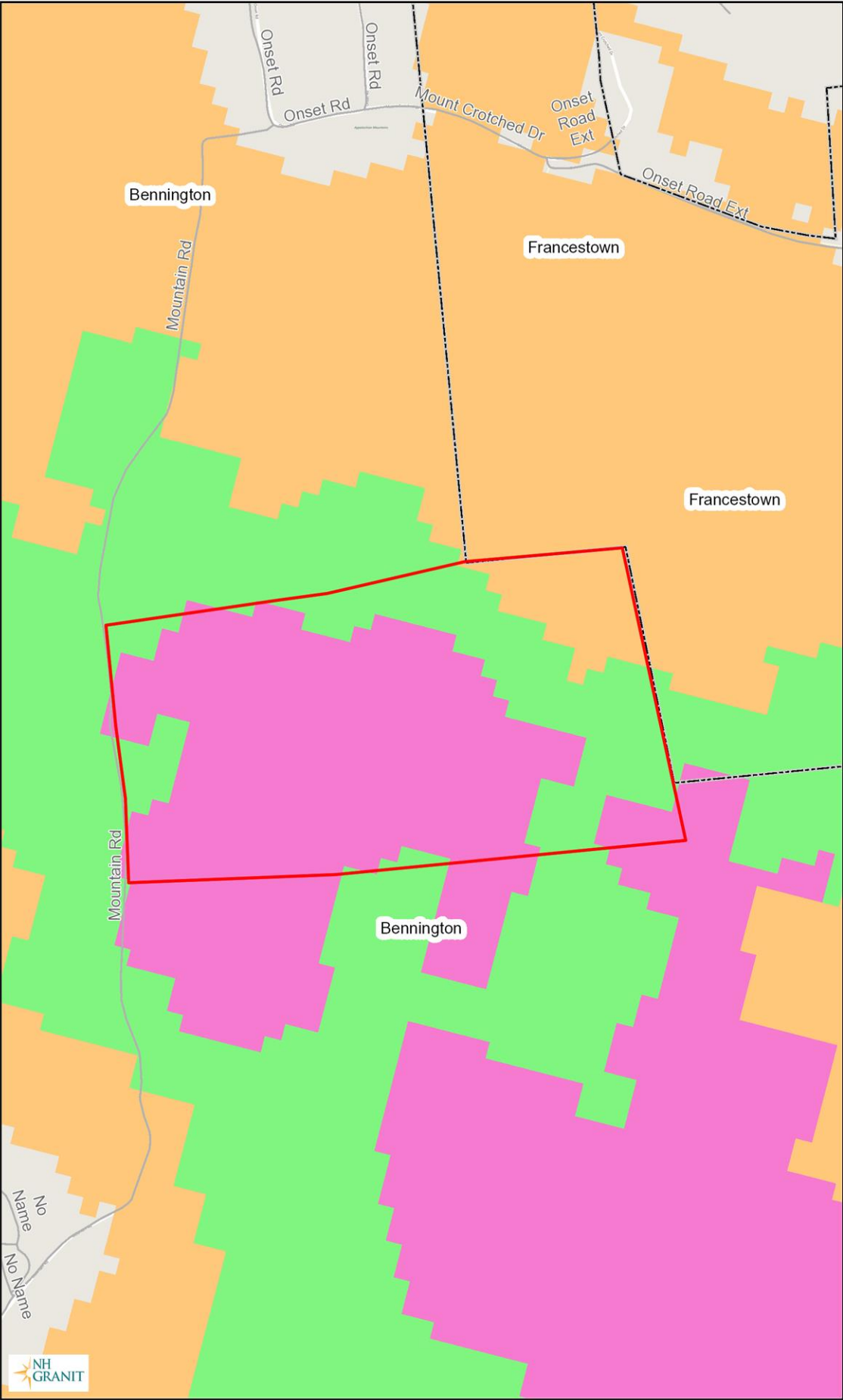


Notes

Map by Ben Haubrich
Francestown Land Trust



Crotched Mountain West - NHF&G 2015 WAP Tiers



Legend

- State
- City/Town
- Turnpikes
- Interstates
- US Routes
- State Routes
- Local Roads
- WAP 2015: Highest Ranked Wildlife Habitat
 - Not Top Ranked
 - Highest Ranked Habitat in NH
 - Highest Ranked Habitat in Region
 - Supporting Landscape

Map Scale

1: 10,000

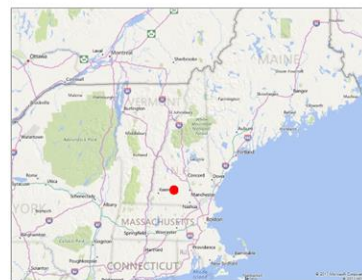
© NH GRANIT, www.granit.unh.edu

Map Generated: 6/22/2017

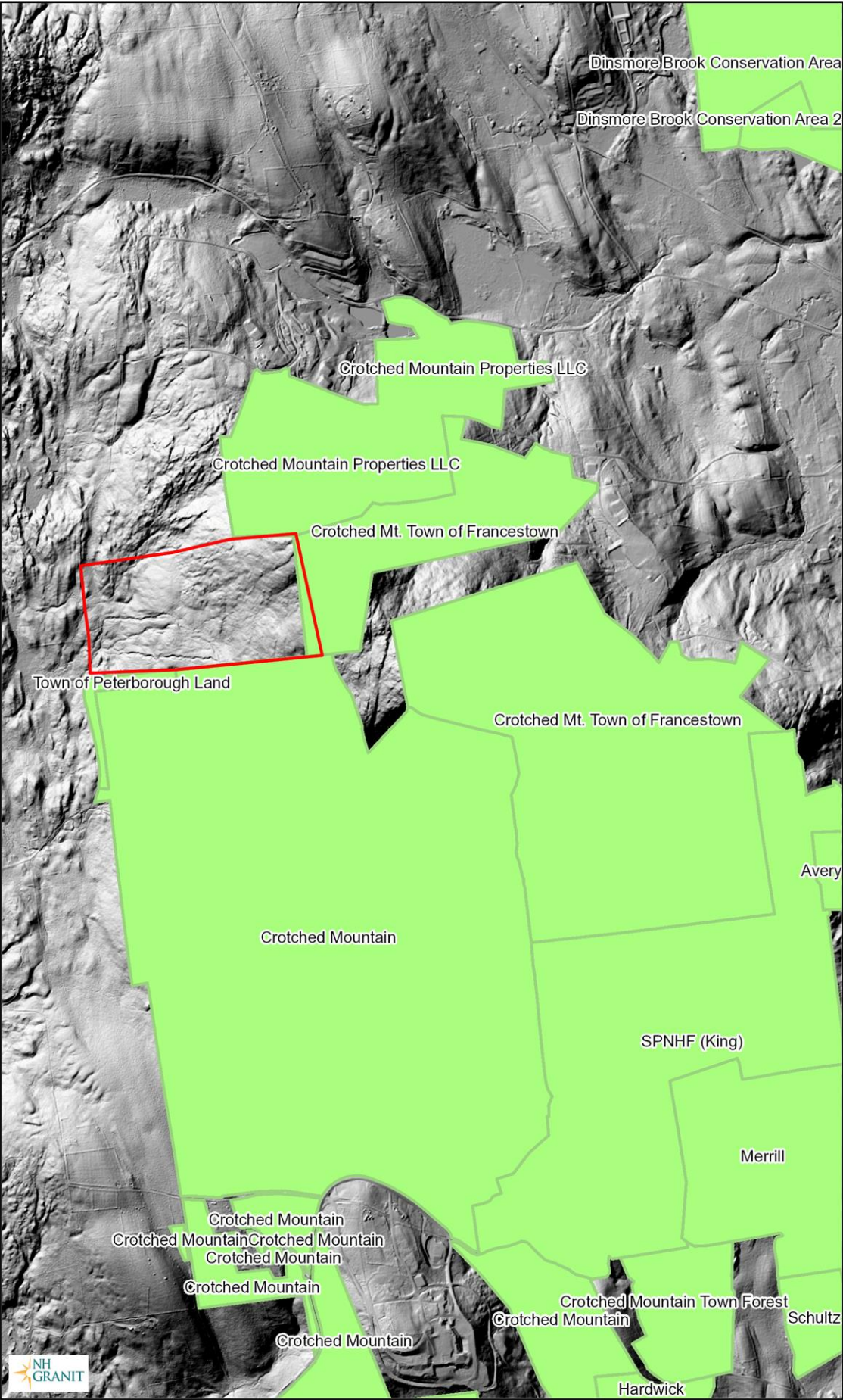


Notes

Map by Ben Haubrich
Francetown Land Trust



Crotched Mountain West - Nearby Conserved Lands



Legend

- CL: Generic
- High : 1906
- Low : -1

Map Scale

1: 24,000

© NH GRANIT, www.granit.unh.edu

Map Generated: 6/22/2017



Notes

LiDAR
Map by Ben Haubrich
Frankestown Land Trust

