

John Coltrane's Solo on Blue Train

From 'Blue Train' - Recorded 1957

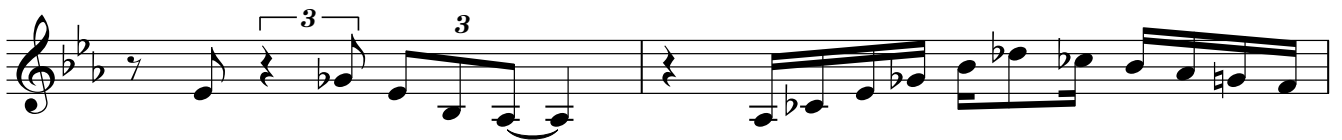
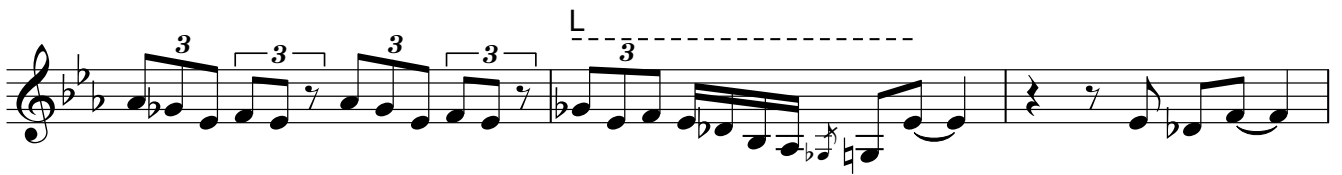
Transcribed by Joe Williamson 2014

L=Laid Back R=Rushed

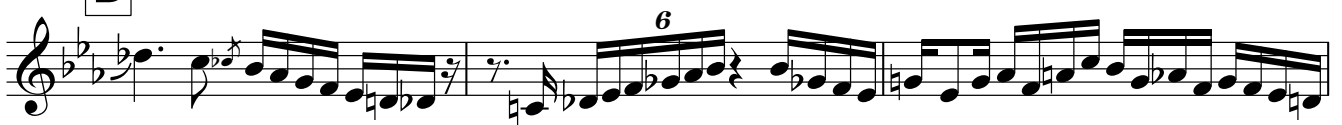
♩=150



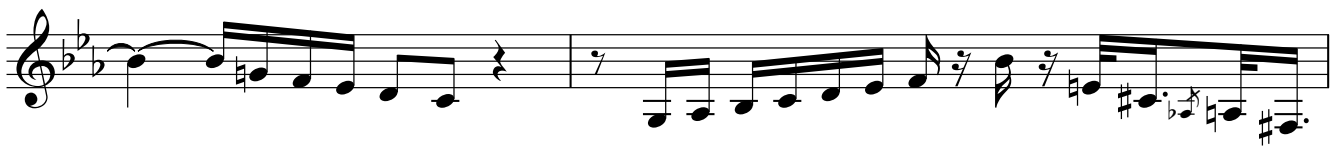
A Changes - Bb Blues



B



C



D



E

Musical notation for section E, measures 1-5. The key signature has two flats (B-flat and E-flat). The notation includes eighth and sixteenth notes, with a triplet of eighth notes in measure 2. Measure 5 ends with a double bar line.

F

Musical notation for section F, measures 6-10. The key signature has two flats. The notation includes eighth and sixteenth notes, with triplets of eighth notes in measures 6, 7, and 8. Measure 10 ends with a double bar line. There are dashed lines above measures 6 and 8, and a dashed line above measure 9.

G

Musical notation for section G, consisting of five staves of music in G minor. The notation includes various rhythmic patterns, including triplets and a sixteenth-note run. A dashed line with an 'L' above it spans the first two staves. A '3' is written above the first triplet in the second staff. A '3' is written above the first triplet in the third staff. A '3' is written above the first triplet in the fourth staff. A '6' is written above the sixteenth-note run in the fourth staff. A '3' is written above the first triplet in the fifth staff.

H

Musical notation for section H, consisting of four staves of music in G minor. The notation includes various rhythmic patterns, including triplets. A '3' is written above the first triplet in the first staff. A '3' is written above the first triplet in the second staff. A '3' is written above the first triplet in the third staff. A '3' is written above the first triplet in the fourth staff.