

McGAUGHYS

5680 W Barstow, Fresno CA 93722
Phone: 559-226-8196 • Fax: 559-277-0457
www.mcgaughys.com

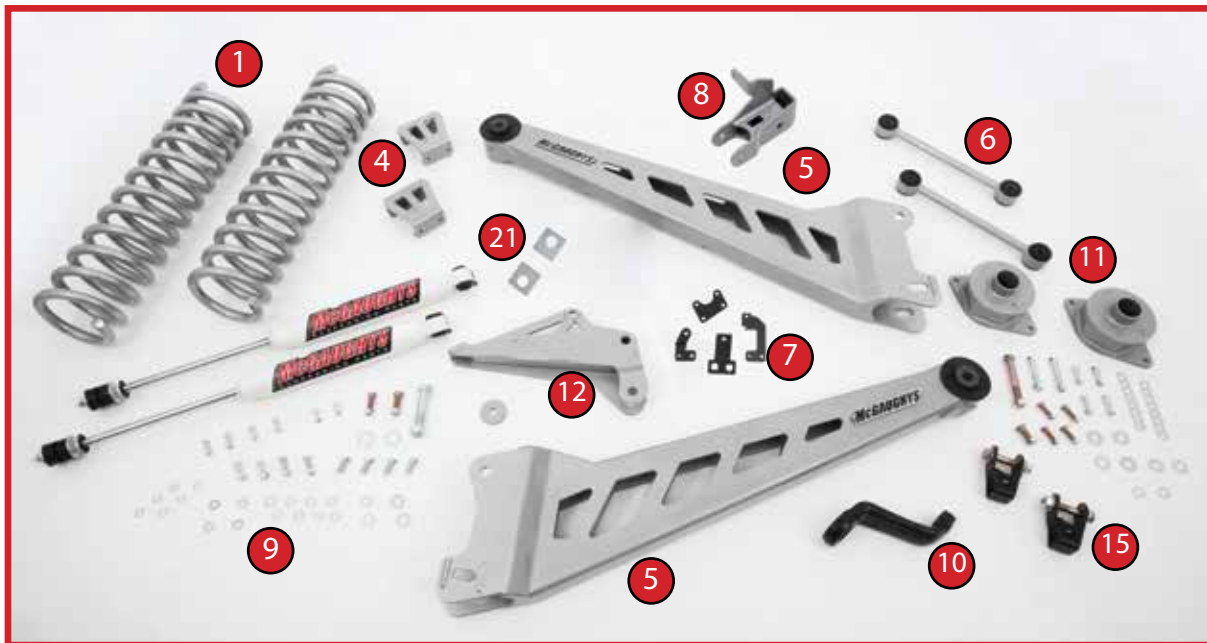
2014-2016 RAM 2500 4" LIFT KIT PART# 54340

STOP! READ THIS FIRST!

READ THESE ENTIRE INSTRUCTIONS BEFORE STARTING ANYTHING

NOTE:

- The factory wheels and tires WILL fit on the front of the vehicle once the lift kit is installed if they are 18" or larger.
- If you alter the powder-coating or finish of any of the provided parts or stock components like the zinc plating or chroming, which can damage the strength and structure of the metal, any warranties will be null and void.
- If any parts are ground on or modified in any way then no returns will be accepted.
- NO welding is required to install any part of this lift kit. Do not weld any components.
- Oversized tires and heavier rims can cause premature ball joint, tie-rod, and idler arm wear. You may need to install new components sooner than factory recommendations based on the tires and rims you choose.



- 1. Coil Springs
- 4. Bump Stop Extension Brackets
- 5. Radius Arms (Driver / Passenger)
- 6. Track Bar Brackets
- 7. Brake Line Brackets

- 8. Rear Panhard Extension Bracket
- 9. Hardware Pack
- 10. Pitman Arm
- 11. Rear Coil Spring Spacers

- 12. Track Bar Relocation Bracket
- 15. Shock Extenders
- 21. Track Bar Relocation Bracket Keys

FRONT INSTALLATION:

Before starting this installation, we recommend loosening the factory front shocks with the truck on the ground. Once the vehicle is in the air, it is extremely difficult to access the upper shock nuts and they have a significant amount of tension on them. Loosen the top nut with a 21mm wrench but **DO NOT** remove it all the way off since it holds up the front suspension. (Photo 1)



Always use the proper tools and consult the factory service manual for recommended torque values and procedures. With the parking brake set and chocks behind the rear tires, use a jack and lift the front of the vehicle and place jack stands under the frame on each side. Remove the front tires and wheels.

1. Using a 13mm wrench, unbolt the brake line brackets (L&R) from the frame. Also, unbolt the brake line bracket from the front axle for extra maneuverability. (Photo 2)

2. Support the front driveline with a suitable strap and remove the four front driveshaft flange bolts using a 15mm socket. (Photo 3)



3. Remove the driver's side drag link to pitman arm nut using a 21mm socket. Use a tie-rod removal tool to avoid damaging your stock tie-rod ends. (Photo 4)

4. Remove the pitman arm-to-steering box nut using a 46mm socket. (Photo 5)

5. Using a pitman arm puller, remove the pitman arm from the steering box output shaft. (Photo 6)

6. Remove the sway bar end link top nuts (L&R) using a 18mm socket. Separate the sway bar from the end links. (Photo 7)





7. Remove the sway bar mounting bolts from the frame using a 15mm socket. (Photo 8)

8. Remove the sway bar.

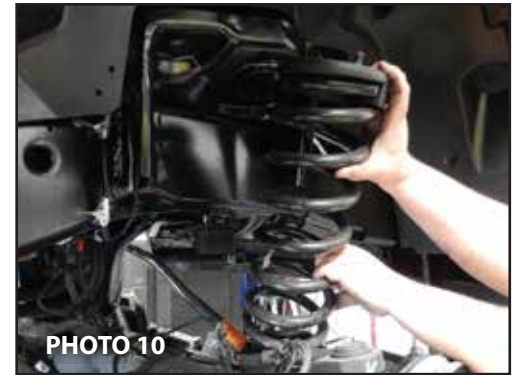
9. Support the front axle and remove the front shock top nuts.

10. Remove the front shock lower mounting bolt using a 21mm socket. Remove the shocks from the vehicle. (Photo 9)

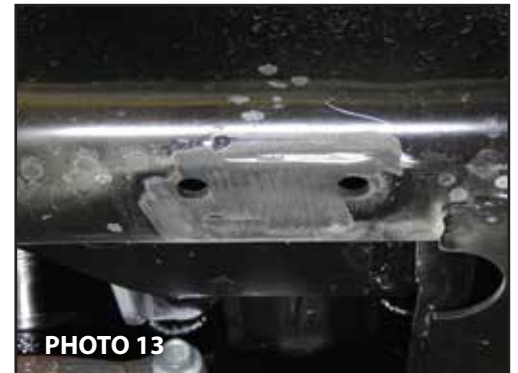
11. Lower the front axle until the front coil spring tension is released.

12. Remove the coil springs. (Photo 10)

13. Remove the track bar from the factory track bar bracket using a 27mm socket. (Photo 11)



14. Use a cut-off wheel to remove the front bump stop mounts (L&R) from the frame. **NOTE: The frame mounts will be reused so do not destroy them, cut the factory weld only.** (Photo 12)



15. Clean the remaining weld material from the frame using an abrasive disc or flap-wheel. Clean and paint the bare metal to prevent rust. (Photo 13)

16. Clean the remaining weld material from the bump stop mount you just removed using an abrasive disc or flap-wheel. Clean and paint the bare metal to prevent rust.



17. Install the bump stop mounts to the extension brackets with the supplied 3/8" buttonhead allen bolts, washers, and locking nuts. (Photo 14)

18. Install the new bump stops to the factory mounts. This will take some force to do. (Photo 15)

19. Re-thread the bump stop mounting holes in the frame using the supplied 7/16" tap. Next, install the new bump stop assemblies into the vehicle using the supplied 7/16" x 3/4" bolts. (Photo 16)



20. To mount the McGaughey's track bar relocation bracket, start by placing the factor bolt through the track bar bracket and drill the brace hole using a 7/16" drill bit. Place something firm between the crossmember and oil pan to prevent damage. **NOTE: The top hole on the bracket may or may not require drilling with a 1/2" drill bit, due to the production variances on Ram frames.** (Photos 17 & 18)

21. For the top mounting hardware, Install the supplied 1/2" x 1 1/2" bolt from the rear with washers, and locking nut. Next, install the supplied Grade 8 7/16" x 1 1/2" bolts, washers, and locking nuts in the lower mounting holes. (Photo 19)



22. Remove the upper radius arm to axle bolts using a 27mm socket. Remove the lower radius arm to axle bolts using a 24mm socket and a 27mm wrench. (Photo 20)

23. Remove the radius arm to frame bolts using a 27mm socket. Remove the radius arms from the vehicle. (Photo 21)

24. Install the McGaughey's radius arms to the axle; upper bolts first. (Photo 22)

25. Install the rear radius arm bolts next. (Photo 23)



30. Duplicate steps 22 thru 29 for the other side.

31. Track bar alignment cam must be used in this position for a 4.0" lift. Place the cams in front and behind the McGaughey's track bar bracket so that the bolt can pass through with no obstruction.

Track Bar Alignment Cam (4.0" Lift)



32. Install the track bar into the McGaughey's bracket using the supplied 18mm x 90mm bolt, washers, alignment cams, and locknut. Torque all bolts to factory specifications.

33. Trim the protrusion off the stock coil insulators as shown. (Photo 33)

34. Install the McGaughey's lift coils with lower tag aligned at 9 o'clock on the left side of the vehicle and 3 o'clock on the right side of the vehicle with the motor being the 12 o'clock position. The tighter coil windings face up and the open windings face down. (Photos 34 & 35)



35. Install the shocks with the supplied new upper hardware and original lower hardware using a 21mm wrench for the upper nut and a 21mm socket and wrench for the lower hardware. (Photo 36)



36. Tighten the track bar hardware previously left loose in step 31.

37. Install the McGaughey's supplied driver's side brake line drop bracket on frame with stock hardware. Next, install the OE brake line bracket to the McGaughey's drop bracket with the supplied 5/16" x 3/4" bolts, washers and nut. (Photos 37 & 38)

38. Install the McGaughey's supplied passenger side brake line drop bracket on frame with stock hardware. Next, install the OE brake line bracket to the McGaughey's drop bracket with the supplied 5/16" x 3/4" bolts, washers and nut. (Photo 39)

39. Re-attach the L&R lower brake line brackets to the axle using a 13mm socket.

40. Install new drop pitman arm. Apply the supplied red thread locker to the factory pitman arm retention nut and tighten to factory specifications using the new drop pitman arm. **NOTE: Re-check this nut after the first 500 miles of driving.** (Photo 40)

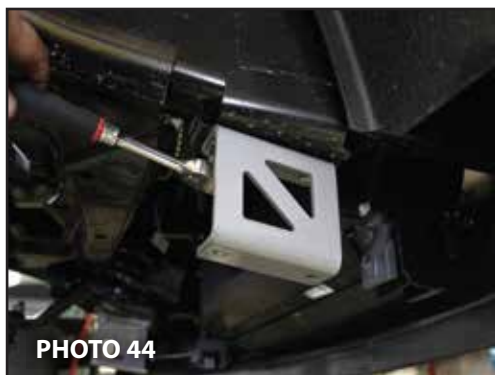


41. Loosen the drag link adjuster lock nuts. Turn the adjuster until the drag link is free.

42. Cut off the unthreaded portions of the end and link as shown. (Photos 41 & 42)

43. Reinstall end back on the drag link. Insert the drag link end back into the pitman arm from the bottom as shown. Tighten the nut to factory specifications. (Photo 43)

44. Adjust the drag link to center the front axle at ride height.



45. Mount the supplied sway bar drop brackets to the frame with the original hardware. Mount brackets so that the angle is away from the axle. (Photo 44)



46. Attach the sway bar to the drop brackets using the supplied 3/8" x 1 1/4" Grade 8 bolts, washers, and lock nuts and tighten. (Photo 45)

47. Install the sway bar end links and tighten to factory specifications. (Photo 46)

48. Apply the supplied thread-locking compound to the driveshaft flange retaining nuts. Align the driveshaft flange to the axle flange and thread in the bolts. Tighten bolts to factory specification. (Photo 47)

REAR INSTALLATION: (COIL REAR ONLY)

49. Support the rear axle and remove the parking brake cable retainer bracket nut. (Photo 48)

50. Remove the top shock nut using a 18mm socket.

51. Remove the bottom shock hardware using a 21mm socket and 21mm wrench. (Photo 49)

52. Remove the shock absorber. (Photo 50)



53. Repeat steps 49 through 51 for the opposite side.

54. Remove the sway bar end link upper mounting hardware. (Photo 51)

55. Remove the sway bar end link lower mounting hardware. (Photo 52)

56. Remove the sway bar end link.

57. Repeat steps 53 through 55 for the opposite side.

58. Remove the panhard bar to axle hardware. (Photo 53)

59. Lower the rear axle until spring pressure has been safely released.

60. Remove the rear coil springs. (Photo 54)

61. Open the existing hole in the factory lower track bar bracket with a 1/2" drill bit as shown. (Photo 55)



62. Install the new track bar bracket into the lower track bar mount. Insert the original bolt through the lower hole, going through the brackets. Insert the provided 1-1/2 x 1/2" GRD 8 bolt through the lower hole you already had drilled out, passing through the track bar bracket, using the provided 1/2 top lock nut. Install the original track bar into the new track bar drop using the provided 9/16" bolt and lock nut. Insert the 3/8 x 1-3/4" bolt through the track bar bracket, coil spacer and the original spring mount hole, install with provided lock nut. After all 4 bolts are installed, then tighten. (Photo 56)



63. Place the McGaughy's 2-1/2" coil spring spacers on the axle and align with the existing holes. Mount the spacers using the provided 3/8" x 1 1/4" bolts, washers, and nuts. Re-install the coil springs.



64. Install the new sway bar end links using the supplied 1/2" x 2 1/2" bolts, washers, and locknuts. Install these with the larger washer outside and the standard washer inside. (Photo 59)

65. Install the new shock extenders using the factory hardware. (Photo 60) and 9/16" x 3" Bolt

66. Set the rear at ride height then proceed to tighten the panhard bar to the McGaughy's extension bracket.

67. **IMPORTANT:** Double check all of the fasteners, bolts and components, making sure everything has been properly torqued as outlined in these instructions to factory specifications. This **MUST** be done prior to operating the vehicle. We recommend periodically checking all of the front suspension and lift kit components and fasteners to be certain they are tight and in proper working order.