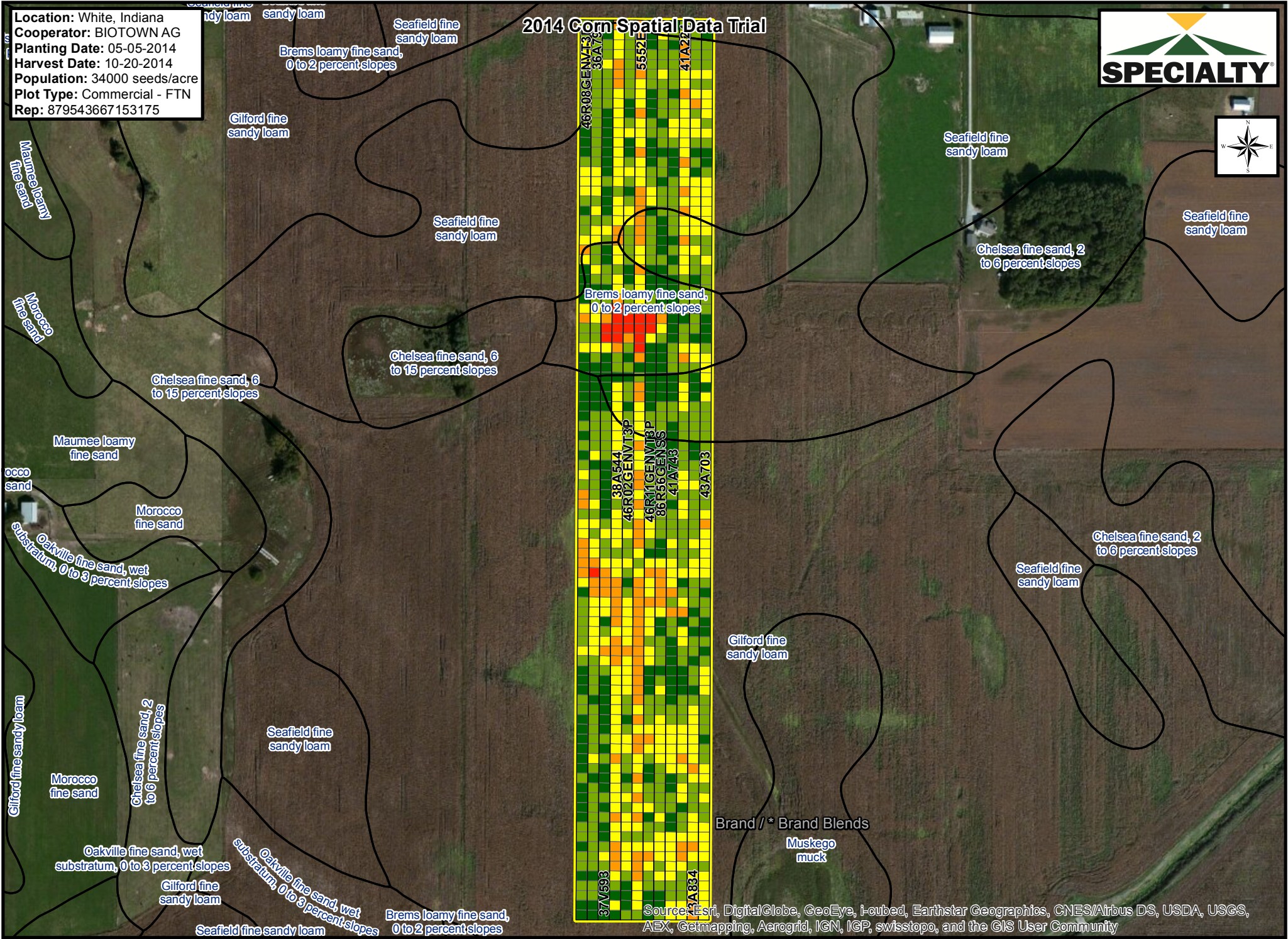
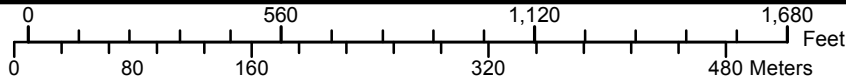


**Location:** White, Indiana  
**Cooperator:** BIOTOWN AG  
**Planting Date:** 05-05-2014  
**Harvest Date:** 10-20-2014  
**Population:** 34000 seeds/acre  
**Plot Type:** Commercial - FTN  
**Rep:** 879543667153175

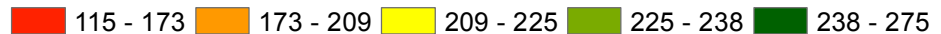
## 2014 Corn Spatial Data Trial



Sources: Esri, DigitalGlobe, GeoEye, i-cubed, Earthstar Geographics, CNES/Airbus DS, USDA, USGS, AEX, Getmapping, Aerogrid, IGN, IGP, swisstopo, and the GIS User Community



Yield Values - Bushels Per Acre



**Location:** White, Indiana  
**Cooperator:** BIOTOWN AG  
**Planting Date:** 05-05-2014  
**Harvest Date:** 10-20-2014  
**Population:** 34000 seeds/acre  
**Plot Type:** Commercial - FTN  
**Rep:** 879543667153175

### Legend

All yield values are in bu/ac. All Area units are in Acres.

Soils (Yield in bu/ac):

Soil1 = Gilford fine sandy loam

Soil2 = Seaford fine sandy loam

Soil3 = Brems loamy fine sand, 0 to 2 percent slopes

\* Denotes Product Brand Blend.

ID	Business Brand	Product Brand	Traits	Rank	Yield	CV	Moisture	Area (sum)	Yield Soil1	CV Soil1	Yield Soil2	CV Soil2	Yield Soil3	CV Soil3
1	SPECIALTY HYBRIDS	46R08GENVT3P	GENVT3PRIB	3	232	6.2	18.8	1.6	232	5.8	235	5.6	231	8.8
2	SPECIALTY HYBRIDS	36A794	GENSSRIB	6	228	5.1	17.4	1.6	228	5.8	229	2.8	228	4.9
3	SPECIALTY HYBRIDS	37V593	GENVT3PRIB	1	234	7.5	17.1	1.6	235	6.5	240	3.6	222	13.9
4	SPECIALTY HYBRIDS	38A544	GENSSRIB	11	213	8.9	16.9	1.6	216	5.3	214	4.2	197	20.6
5	SPECIALTY HYBRIDS	46R02GENVT3P	GENVT3PRIB	7	228	6.5	17.6	1.6	227	4	233	2.6	219	15.5
6	BECK'S	5552EZ	AGRISURE3122	12	207	7.4	18.6	1.6	208	4.8	210	3.6	191	17.5
7	SPECIALTY HYBRIDS	46R11GENVT3P	GENVT3PRIB	5	231	7.9	18.9	1.6	229	5.1	238	3.1	225	20.7
8	SPECIALTY HYBRIDS	86R56GENSS	GENSSRIB	4	232	6.1	17.8	1.6	229	6.1	236	3.3	242	8.5
9	SPECIALTY HYBRIDS	41A743	GENSSRIB	2	234	5.3	19.6	1.6	232	5.8	236	4.2	240	3
10	SPECIALTY HYBRIDS	41A224	GENSSRIB	10	223	5	19.2	1.6	225	4.6	217	4.7	228	5.1
11	SPECIALTY HYBRIDS	43A834	GENSSRIB	8	228	4.5	18.5	1.6	227	4.8	230	3.9	231	4
12	SPECIALTY HYBRIDS	43A703	GENSSRIB	9	227	3.9	17.9	1.6	226	3.8	225	3.8	234	3.1
				Field Avg	226		18.2	19.2	226		229		224	



**Location:** White, Indiana  
**Cooperator:** BIOTOWN AG  
**Planting Date:** 05-05-2014  
**Harvest Date:** 10-20-2014  
**Population:** 34000 seeds/acre  
**Plot Type:** Commercial - FTN  
**Rep:** 879543667153175

## VALUE ADDED TRAITS:

**RR2** = Roundup Ready® Corn 2  
**VT3** = YieldGard VT Triple®  
**GENSS** = Genuity® SmartStax®  
**GENVT3P** = Genuity® VT Triple PRO®  
**GENVT2P** = Genuity® VT Double PRO®  
**VTRR2** = YieldGard VT Rootworm/RR2®  
**GENSSRIB** = Genuity® SmartStax® RIB Complete® Corn Seed Blend  
**GENVT2PRIB** = Genuity® VT Double PRO® RIB Complete® Corn Seed Blend  
**DGVT3PRIB** = Genuity® DroughtGard® Hybrids with VT Triple PRO® RIB Complete® Corn Blend  
**DGVT3P** = Genuity® DroughtGard® Hybrids with VT Triple PRO® Corn  
**DGVT2PRIB** = Genuity® DroughtGard® Hybrids with VT Double PRO® RIB Complete® Corn Blend  
**DGVT3P** = Genuity® DroughtGard® Hybrids with VT Double PRO® Corn  
**DGRR2** = Genuity® DroughtGard® Hybrids with Roundup Ready® Corn 2

## GENERAL:

N/A = Not Available


Individual results may vary, and performance may vary from location to location and from year to year. This result may not be an indicator of results you may obtain as local growing, soil and weather conditions may vary. Growers should evaluate data from multiple locations and years whenever possible. Always read and follow IRM, where applicable, grain marketing and all other stewardship practices and pesticide label directions. Leaf Design<sup>SM</sup> is a servicemark of Monsanto Company. All other trademarks are the property of their respective owners. ©2014 Monsanto Company.

**Monsanto Company is a member of Excellence Through Stewardship® (ETS).** Monsanto products are commercialized in accordance with ETS Product Launch Stewardship Guidance, and in compliance with Monsanto's Policy for Commercialization of Biotechnology-Derived Plant Products in Commodity Crops. This product has been approved for import into key export markets with functioning regulatory systems. Any crop or material produced from this product can only be exported to, or used, processed or sold in countries where all necessary regulatory approvals have been granted. It is a violation of national and international law to move material containing biotech traits across boundaries into nations where import is not permitted. Growers should talk to their grain handler or product purchaser to confirm their buying position for this product. Excellence Through Stewardship® is a registered trademark of Biotechnology Industry Organization.

**B.t. products** may not yet be registered in all states. Check with your Monsanto representative for the registration status in your state.

**IMPORTANT IRM INFORMATION:** Genuity® RIB Complete® corn blend products do not require the planting of a structured refuge **except** in the Cotton-Growing Area where corn earworm is a significant pest. Genuity® SmartStax® RIB Complete®, Genuity® VT Double PRO® RIB Complete® and Genuity® VT Triple PRO® RIB Complete® corn are blended seed corn products. See the IRM/Grower Guide for additional information. Always read and follow IRM requirements.

**ALWAYS READ AND FOLLOW PESTICIDE LABEL DIRECTIONS.** Roundup Ready® crops contain genes that confer tolerance to glyphosate, the active ingredient in Roundup® brand agricultural herbicides. Roundup® brand agricultural herbicides will kill crops that are not tolerant to glyphosate. DroughtGard®, Genuity®, Genuity Design®, Genuity Icons, Genuity®, RIB Complete and Design®, RIB Complete®, Roundup Ready 2 Technology and Design®, Roundup Ready®, Roundup®, SmartStax and Design®, SmartStax®, VT Double PRO®, VT Triple PRO® and YieldGard VT Triple® are trademarks of Monsanto Technology LLC. LibertyLink and the Water Droplet Design® is a registered trademark of Bayer. Herculex® is a registered trademark of Dow AgroSciences LLC. Respect the Refuge and Corn Design® and Respect the Refuge® are registered trademarks of National Corn Growers Association. All other trademarks are the property of their respective owners. ©2014 Monsanto Company.



Before opening a bag of seed, be sure to read, understand and accept the stewardship requirements, **including applicable refuge requirements for insect resistance management**, for the biotechnology traits expressed in the seed as set forth in the Monsanto Technology/Stewardship Agreement that you sign. By opening and using a bag of seed, you are reaffirming your obligation to comply with the most recent stewardship requirements.

