

FLORIDA RIVER ESTATES WATER DISTRIBUTION SYSTEM

LOCATED IN PORTIONS OF SECTION 7 & 8, T 35 N, R 8 W, N.M.P.M.
LA PLATA COUNTY, COLORADO



GOFF ENGINEERING & SURVEYING, INC.
126 ROCK POINT DRIVE SUITE A
P.O. BOX 97 DURANGO, COLORADO 81302
(970) 247-1705
www.GoffEngineering.com

SUBDIVISION BOUNDARY ZONE BOUNDARY

GENERAL WATER NOTES:

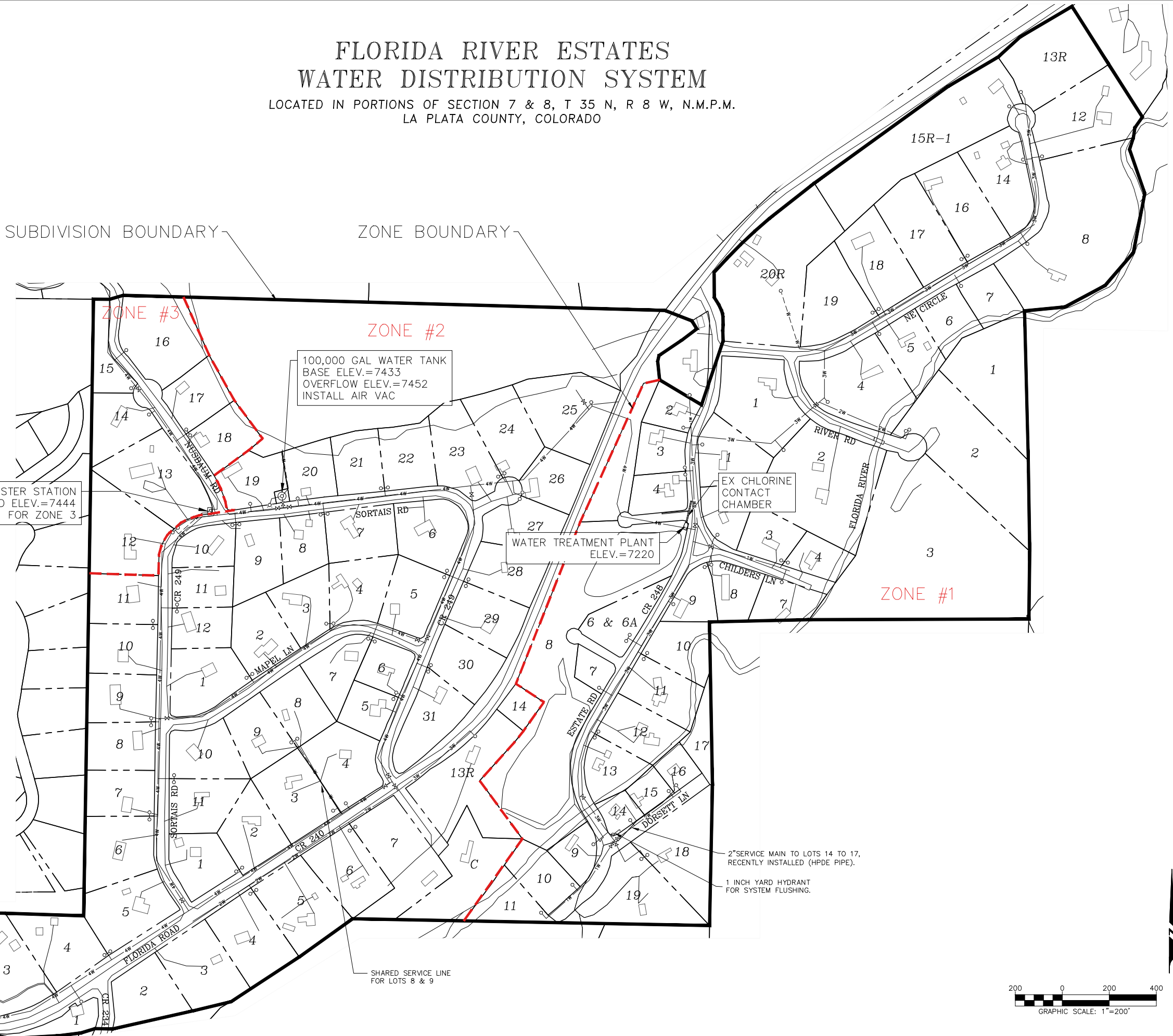
- ZONE 1:
LOWER AREA ALONG RIVER CONTROLLED BY PRV STATION LOCATED IN WATER TREATMENT PLANT.
- ZONE 2:
GRAVITY SYSTEM FED BY WATER STORAGE TANK.
- ZONE 3:
PRESSURIZED ZONE SERVED BY BOOSTER STATION AT SORTAIS/NUSBAUM INTERSECTION.

LEGEND

— W —	EX. WATER MAIN (SIZE NOTED)
○ ○	EX. DOUBLE WATER SERVICE
○	EX. SINGLE WATER SERVICE
X	EX. WATER VALVE
— P —	P. WATER MAIN (SIZE NOTED)
X	P. WATER VALVE

NOTES:

1. CONTOUR AND PLANIMETRIC INFORMATION AS SHOWN HEREON WAS OBTAINED FROM THE LA PLATA COUNTY GIS DATA BASE AND HAS NOT BEEN INDEPENDENTLY FIELD VERIFIED BY GOFF ENGINEERING AND SURVEYING, INC. ACTUAL GROUND CONDITIONS AND CONTOURS MAY VARY.
2. WATER MAIN INFORMATION FROM EXISTING "EXHIBIT A" WATER SYSTEMS MAP FROM H.O.A. & MARK-UPS FROM SYSTEM OPERATOR.



BOOSTER STATION
GROUND ELEV.=7444
FOR ZONE 3

100,000 GAL WATER TANK
BASE ELEV.=7433
OVERFLOW ELEV.=7452
INSTALL AIR VAC

WATER TREATMENT PLANT
ELEV.=7220

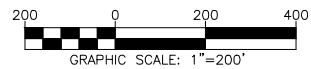
EX CHLORINE
CONTACT
CHAMBER

1" EX. SERVICE MAIN TO LOTS 2 & 3

2" SERVICE MAIN TO LOTS 14 TO 17,
RECENTLY INSTALLED (HPDE PIPE).

1 INCH YARD HYDRANT
FOR SYSTEM FLUSHING.

SHARED SERVICE LINE
FOR LOTS 8 & 9



Goff Engineering & Surveying, Inc. expressly reserves the common law copyright and other property rights in these plans. These plans are not to be changed or copied in any form or manner whatsoever nor are they to be assigned to any third party without first obtaining written permission and consent of Goff Engineering & Surveying, Inc. ©

**FLORIDA RIVER ESTATES
WATER DISTRIBUTION SYSTEM**
LA PLATA COUNTY, COLORADO

Issue Record:
PER REPORT 04-02-2018

Revisions:

Project Number: 17-195
Drawn By: CTH
Designed by: CTH
Checked By: BAH

Sheet
C1.0
EXISTING
CONDITIONS
MAP