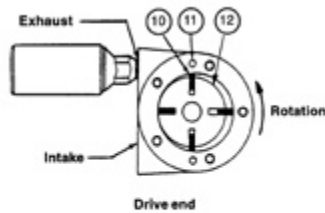
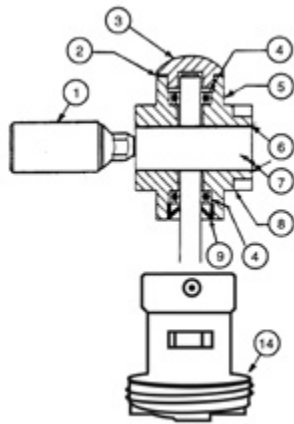


**Centrifugal Drum Pump Motor Models:  
SP-410EX, SP-420EX, SP-280P, SP-ENC, SP-A1 & SP-A2**

**SP-A1 & SP-A2 Spare Parts Lists**

**SP-A1** See Figure 4

Ref. #	Description	P/N for SP-A1	Qty
1	Muffler	SAF350	1
2*	Gasket	SAC229	1
3	Dead end cap	SAC228A	1
4*	Bearing	SAG549	2
5	Dead end plate	SAC617	1
6*	Gasket	SAC527	2
7	Body	SAE899	1
8	Drive end plate	SAC616	1
9*	Shaft seal	SAC190A	1
10*	Vane	SAE893	4
11	Dowel pin	SD324A	4
12	Impeller	SAE896	
13	Repair kit*	SK285	1
	Includes item numbers		1
	2, 4, 6, 9 and 10		1
14	A1 adapter	9007	1



**SP-A2** See Figure 5

Ref. #	Description	P/N for SP-A1	Qty
1	Housing Assembly	317A-A40	1
2*	Inlet Bushing (with Screen)	317A-3B	1
3	Trigger Assembly	317A-A93	1
4*	Regulator Assembly	317A-A249	1
5	Muffler Kit	317A-AMK1	1
6*	Rear-End Plate Assembly	317A-A12	1
7	Cylinder	317A-3	1
8	Vanes (Set of 4)	317A-42-4	4
9*	Rotor	317A-53	1
10*	Front-End Plate, Assembly	317A-A11	1
11	Motor Lock-Nut	317A-27	1
12	Motor Coupling	8333	1
13	Adaptor, Aluminum	9014	1

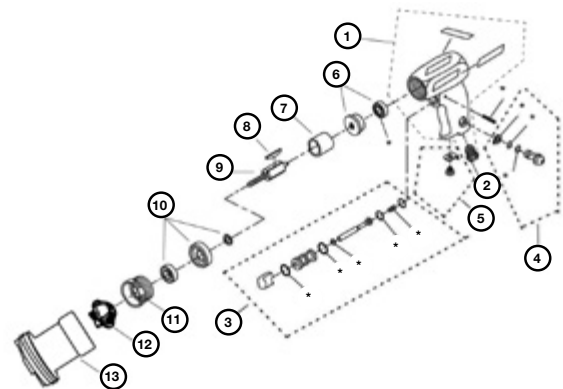


Figure 4 – SP-A1

Figure 5 – SP-A2