

BRIGHTON BEACH

WILLIAM P. LATHAM

Brisk march tempo (♩ = 126-132)

F Major

13

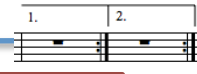
36



Tpt fanfare
Supportive brass, perc line
m. 9 – bsn, tsax, bar, tuba dotted 8th/
16th melody
decresc into m. 13



Melody in picc, fl, ob, ecl, cl, bsn, bar
Dotted quarter supportive line in bcl,
bsax, tuba, SB
Off beat articulated rhythmic line in
asax, tsax, hrn
m. 20 – tpt joins melody
Steady SD line
m. 27 – *tutti mp* with *cresc* to *f* in m. 29



Sweeping melody in fl, ob, tpt 1 – *p*
cresc/decrec
m. 39 – *tutti f* accented line – *decrec*
in m. 42
Dynamically and stylistic contrast
repeats m. 44 to 51

52

75



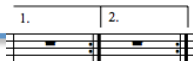
Trio

91

To Coda



Melody line in picc, fl, ob, ecl, tpt – *mp*
Harmonic moving quarter note line in cl, tsax, bar
Dotted quarter bass line in bcl, bsn, bsax, tuba, SB
Off beat rhythmic line in asax, hrn, tbn
Steady BD/SD line
Dynamic rise/fall from m. 58 to m. 68



Legato melody in cl, acl, bar
Steady tenuto quarter note line in bcl,
bsn, tbn, tuba, SB
m. 81 – 2nd time only – tpt fanfare, SD
m. 85 – bcl, bsn, tuba, SB join melody
– hrn joins tenuto quarters – *tutti*
cresc into m. 91



Tutti f – legato, sustained melody in picc, fl, ob, ecl,
cl, acl, asax, tsax, tpt, bar
Supporting quarters in bsn, hrn, tbn, tuba, SB
Sustained halves in basses
m. 97 – *tutti cresc* to *ff* in m. 99
m. 98 – moving 16^{ths} in picc, fl, ob, ec, cl 1, tpt 1
m. 103 – heavy accented lines to finish phrase

107

D.S. al Coda



Coda

rit.

molto rit.

Tpt fanfare restatement with additional accented
section
Low brass, bsax supported – accented, heavy lines
Rolling perc
m. 117 – bsax, tpt, tbn bar, tuba, SB finish
accented fanfare
m. 119 – stylistic change in cl to go back to the
sign – *f decrec* to *p*

Tutti ff melody – heavy accents and light
staccato
m. 123 – *tutti* melody – heavily accented with
rit. – *cresc.* into m. 127 – *ff*
m. 129 – *molto rit.* to the end – sustained *cresc*
into m. 133

