

Large Pixie Style Tieback Scrub Hat Sewing Pattern

Style #dba009 (Created 2016
revised: 1/22/2019)



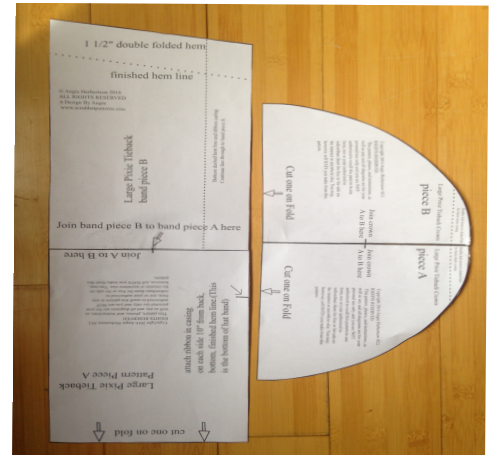
Supplies Needed:

3/4 yard of your favorite fabric
1/4" width package of elastic
at least 30 inches of 7/8" ribbon for ties
pins, seam ripper, and thread to match
your printed out and taped together pattern as shown in photo to the right

PRINT PATTERN AT 100% on your printer settings
Seam allowance for pattern is 1/4" unless otherwise noted

Optional:

sewing guage



Instructions:

Cut out your pattern pieces and tape together as per instructions. Take your fabric and fold from the right hand selvage side over, as shown in photo 1 and place your pattern pieces as directed on the pattern, then cut out.

2. Once you open, you are left with the long hat band and the round crown piece

3. & 4. Transfer the pattern markings from the pattern piece to the back of your crown piece as shown in photo 4.

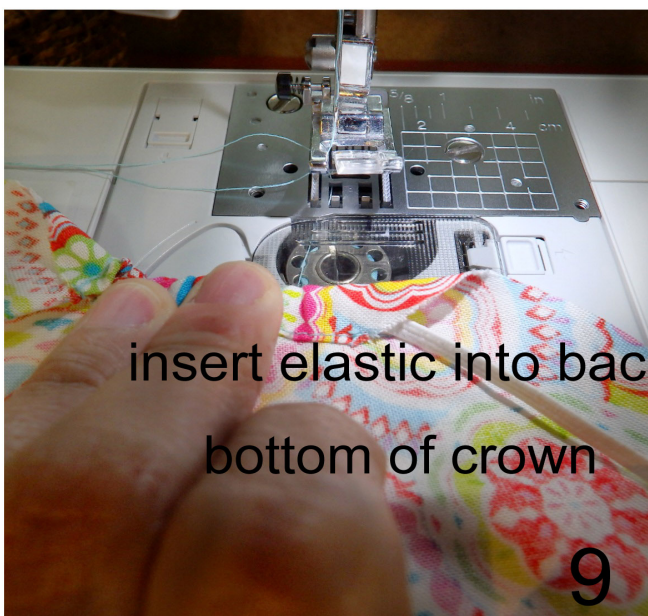


transfer pattern marks
to crown fabric

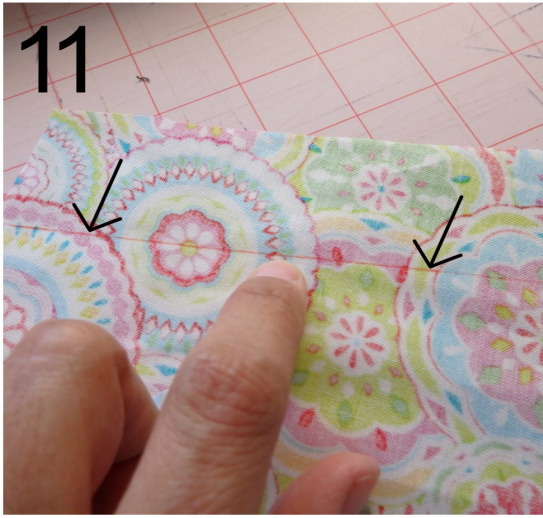
(5) Once you've marked your spots on the crown, (6) fold the edge over to the dashed fold line from the pattern, iron it, then in half again up to the first crease. Once folded, you can see in photo (7) how long it is from side to side. (8) Stitch it down as seen in photo 8, leaving enough room to



Using a safety pin, pinned to one end of your elastic, guide that through the casing you just made. I use a safety pin attached to the elastic because it just makes it easier to get it through the casing. Stitch the elastic down on one end, pull the elastic tight, and stitch it down on the other end. When stitching it down it is best to go over it a couple of times, if you wish, for security. Trim off excess elastic. You will only be using about 1 1/2 to 2" of elastic depending on how tight you want the back of your hat.



Transfer any pattern markings from the hat band pattern piece to your actual hat band at this point. I like to use a Frixion erasable ink pen I picked up at the fabric store. You can easily mark fabric and then once you iron over it, the mark disappears.



- (11) Mark a line 1 1/2" down from the angled end on both ends of your band piece.
- (12) Fold your edge down AT the line and iron it on both ends of the band. (13) Unfold it, then fold the top 1/2 of the fold down TO the line. The line most likely disappeared while you were ironing, so you would use your first crease line as your guide of where the line was.
- (14) you will now have a double fold on each end but since it was at an angle you'll have an odd little piece sticking out to the side to simply trim off with the scissors so that it is even with the rest of the piece.

(15) This is how each end will appear after folded. (16) is a closeup of the little odd end you will need to cut off from folding on an angle. (17) stitch down along the inside edge of fold.

Before continuing be aware that at this point, there are two different ways to do the back of your hat, depending on your preference. I prefer the completely elastic back as you see on the red hat. Some of my customers prefer the looser fit of the bottom hat in O3. If you prefer the cinched band then at this point before continuing on further you will do the instructions marked OPTIONAL

OPTIONAL:

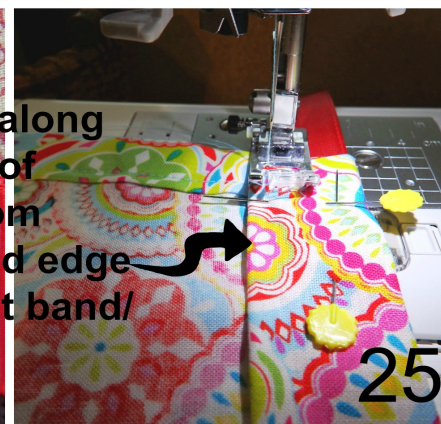
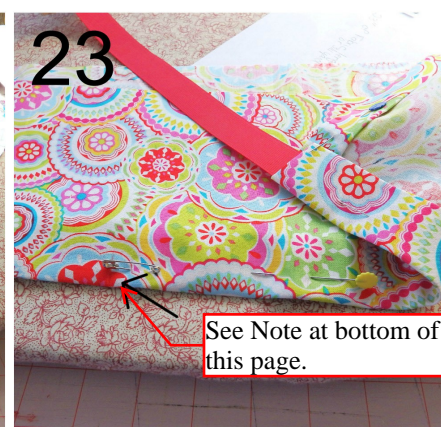
Now that you have sewn the casing as talked about on the previous page, take a piece of elastic about 4" long and using a safety pin, work it into the casing just up to the mark on your pattern piece for Optional elastic. Stitch it down very securely like you did with the crown elastic. Pull the elastic out at the other end until you have about 3 1/2 inches of elastic then stitch it down closed at the top end of your band before continuing on.



You will be working with the bottom of the hat band at this point. Transfer the hemline markings from your pattern to your hat band piece. in (18) I should note that in these photos, I have NOT sewn down the sides of the band yet. By this point you should've already done this, I got ahead of myself so ignore my error and stitch each end down before you start the bottom. (19) Turn under and iron 1/4" of the edge all along the bottom, then turn under and iron the remainder, up to the marking you made on the pattern.

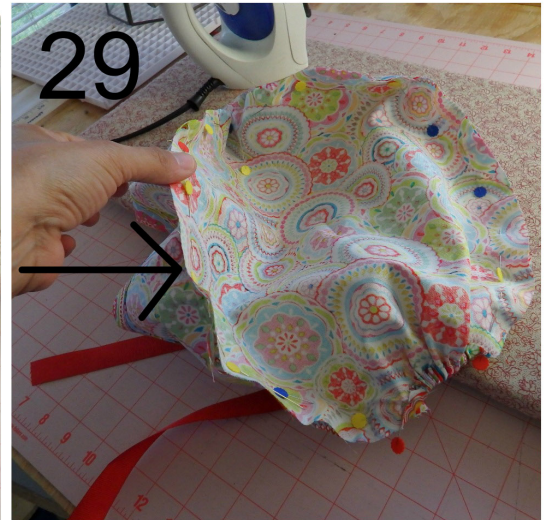


(20) This is how it will look at this point, with the exception that your sides will already be stitched closed and have elastic in the if you chose this optional step. (21) (22) Before stitching the bottom down, pin your ribbon inside the casing with one end all the way to the placement mark noted for ribbon. Fold one end of the ribbon under or heat set the edges of the ribbon so it will not fray. (23) From the outside, pin your ribbon in place so that it doesn't move while you stitch down the bottom casing on the band/brim. (24) Be careful not to catch the ribbon while you sew. Stitch along the top folded edge of the bottom of the band.

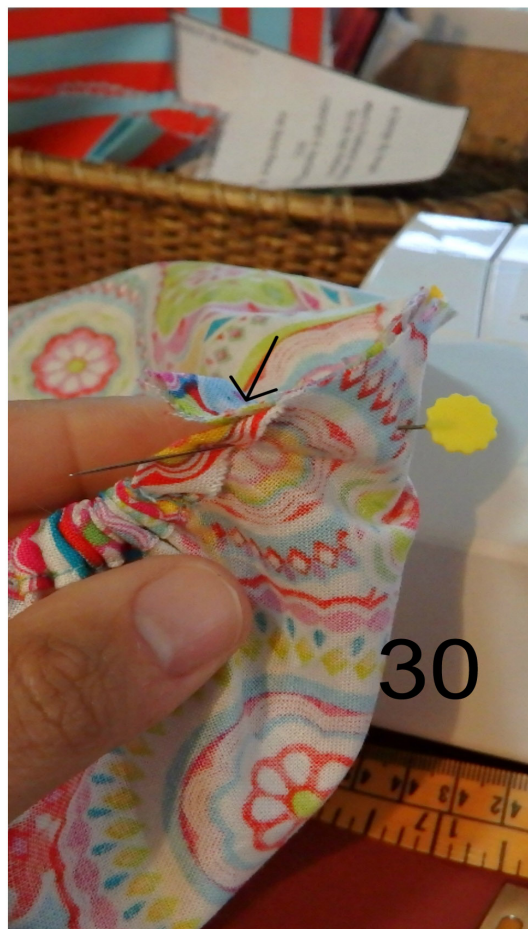


NOTE: This is where you will stitch down your ribbon, at this arrow in 23. This ribbon needs to float freely through the casing of the hat because it acts as a drawstring, to draw up the hat much like a drawstring would in pajama pants. If you don't have this, then the hat will be HUGE on you. Keep this in mind while sewing. This arrow coincides with right near your ears. The elastic in the back is just for keeping it tidy looking. This ribbon drawstring is what slides and makes it tight and fitted to your head. So think drawstring pajamas here. The hat will be puffy on top but if you did it correctly it will fit tightly around when you draw up the ribbon strings through the casing and tie it in back.

(26) Now that you've completed the last step, it's time to line up the center of your hat crown and the center of your hat band (27) right sides together, raw edges to raw edges. Pin them together all the way around the edge. (28) Be sure the edges of your band start and end at each edge of your crown elastic. (29) You'll have it pinned all the way around like this. You also may want to pin the ties out of the way so you don't accidentally sew over them. (hey weird stuff happens, probably only to me, but it happens)



(30) Start stitching from the edge of the elastic in the back on the crown. (31) all the way around to the other side and end at the edge of the elastic. (32) If you have a serger, you would do this on the serger for added durability. If not, some sewing machines have a serger foot. If this is still not the case, then go back over your raw edges with a zig zag stitch so that, over time, your hat doesn't fray and come apart.



Double fold down to dashed line
for back elastic casing

Large Pixie Tieback Crown

piece A

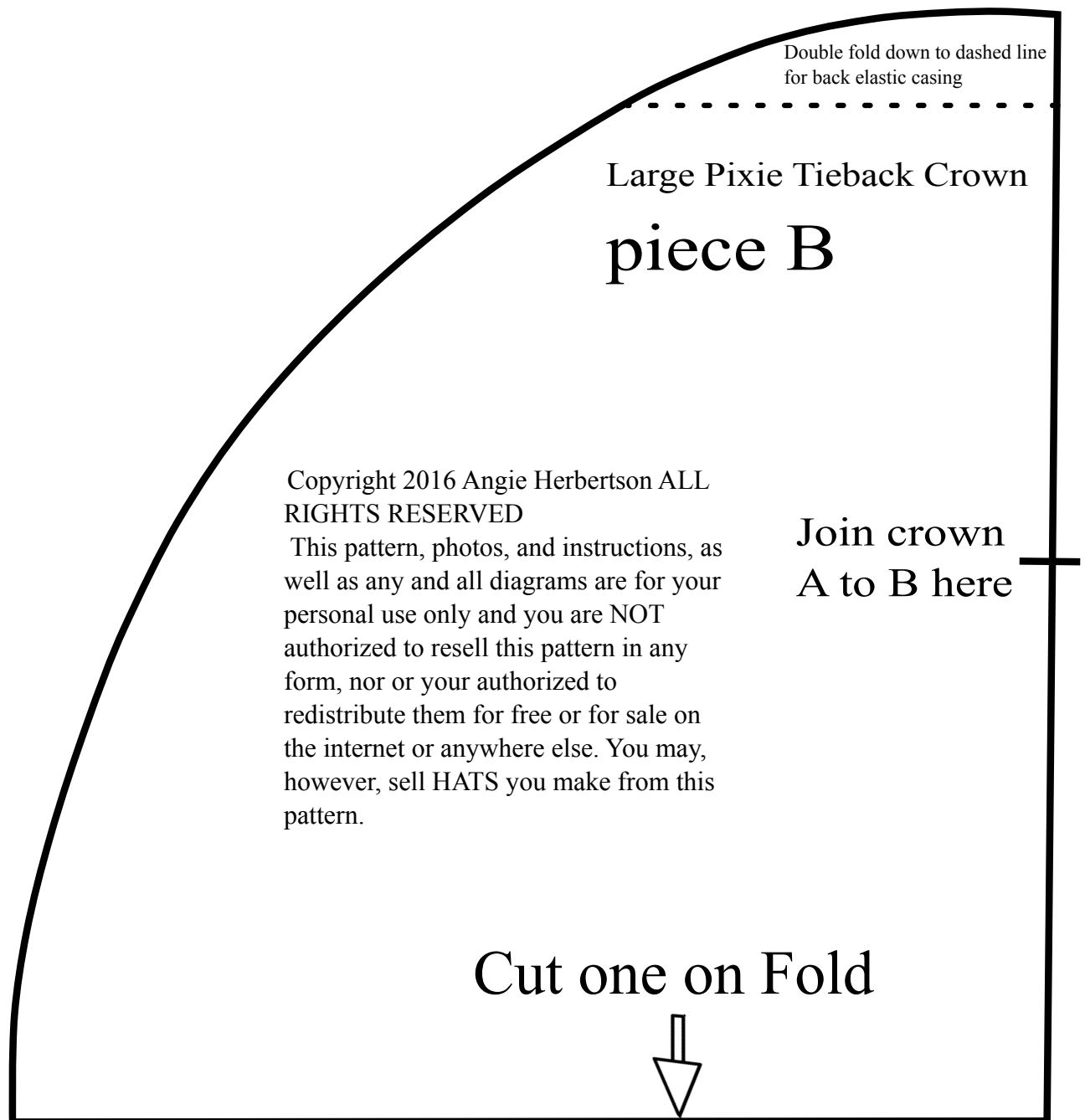
Join crown
A to B here

Copyright 2016 Angie Herbertson ALL
RIGHTS RESERVED

This pattern, photos, and instructions, as
well as any and all diagrams are for your
personal use only and you are NOT
authorized to resell this pattern in any
form, nor or your authorized to
redistribute them for free or for sale on
the internet or anywhere else. You may,
however, sell HATS you make from this
pattern.

Cut one on Fold





The bottom edge of this particular pattern piece, from side to side, is approximately 6 1/2" across. This is for your reference and for checking to see if your printer adjustments are set correctly. Set printer at 100% scaling when printing this pattern. Some printers are set to fit to page, so be sure and check this setting in your printer dialog box before printing.



cut one on fold



Large Pixie Tieback Pattern Piece A

attach ribbon in casing
on each side 10" from back,
bottom, finished hem line. (This
is the bottom of hat band)

Copyright 2016 Angie Herbertson ALL
RIGHTS RESERVED

This pattern, photos, and instructions, as
well as any and all diagrams are for your
personal use only and you are NOT
authorized to resell this pattern in any
form, nor or your authorized to
redistribute them for free or for sale on
the internet or anywhere else. You may,
however, sell HATS you make from this
pattern.

Ribbon acts as a drawstring inside of the casing and should be free moving to draw up the casing like
you would a pair of drawstring pajama pants. You will stitch the ribbon down at THIS POINT ONLY,
inside the casing. THIS is what keeps the hat fitted onto your head, this ribbon drawstring will draw up
and cinch the casing. If the hat is too loose around your head, this step was done incorrectly.

Join A to B here

1 1/2" double folded hem

optional placement line for side elastic

dashed line is finished hem line

© Angie Herbertson 2016
ALL RIGHTS RESERVED
A Design By Angie
www.scrubhatpatterns.com

Large Pixie Tieback
band piece B

Bottom dashed hem line and ribbon casing.
Continue line through to band piece A

Join band piece B to band piece A here

