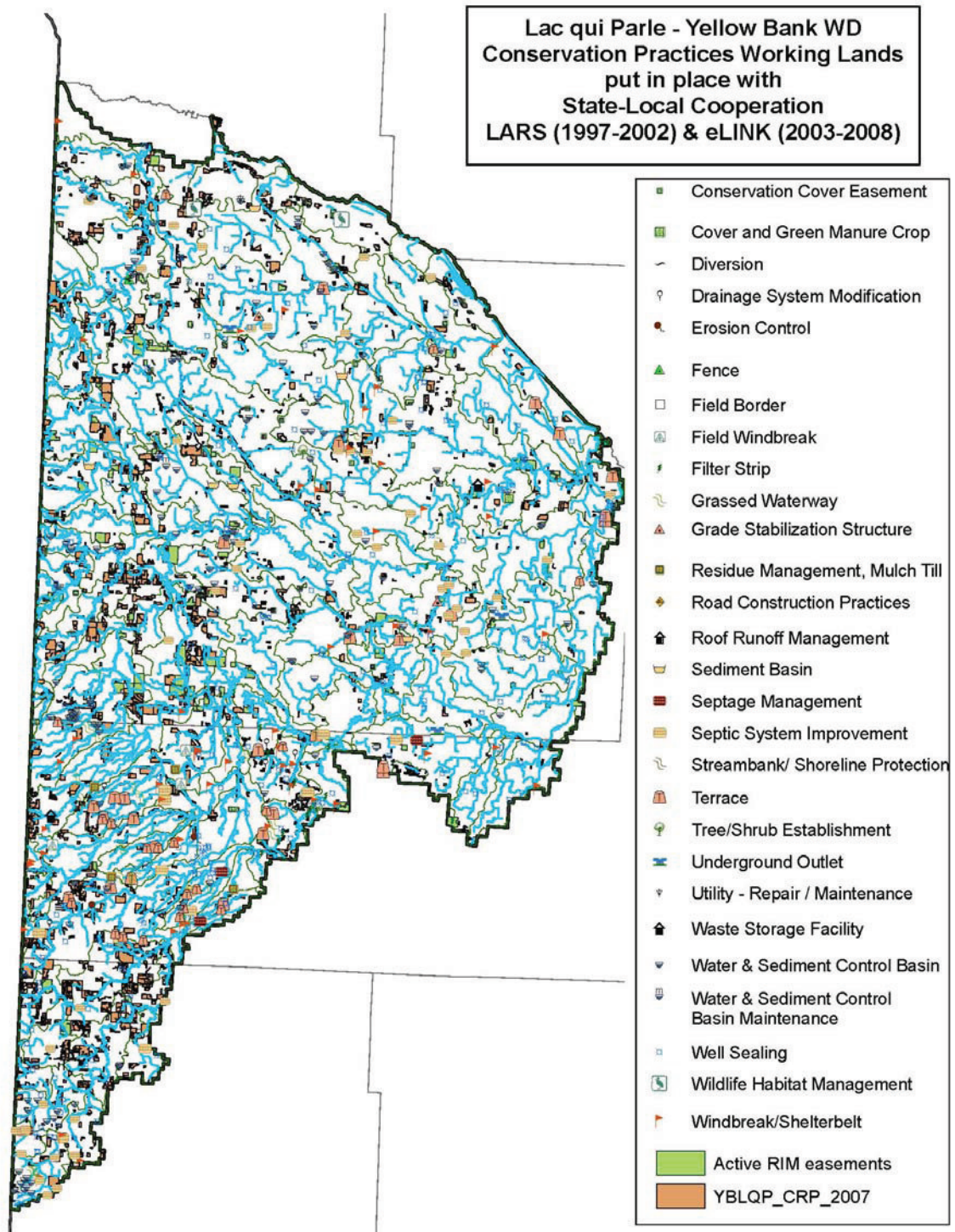


Figure Three



The District continues to maintain Stone Hill Regional Park as part of the **Canby Creek Flood Control Project**. Del Clark Lake, formed by the earthen flood control structure is viewed by anglers as a good walleye lake, with trout, northern pike, bass and pan fish also stocked in the man-made lake. In 2004 an access was added to this lake to provide people with disabilities access to fishing. It was completed through a cooperative effort with the NRCS in Clarkfield.