

# Liberty Movement 1

0 5 10 15 20 25 30 35 40 45 50 45 40 35 30 25 20 15 10 5 0

Page 1  
Counts: 0  
Measures: 0

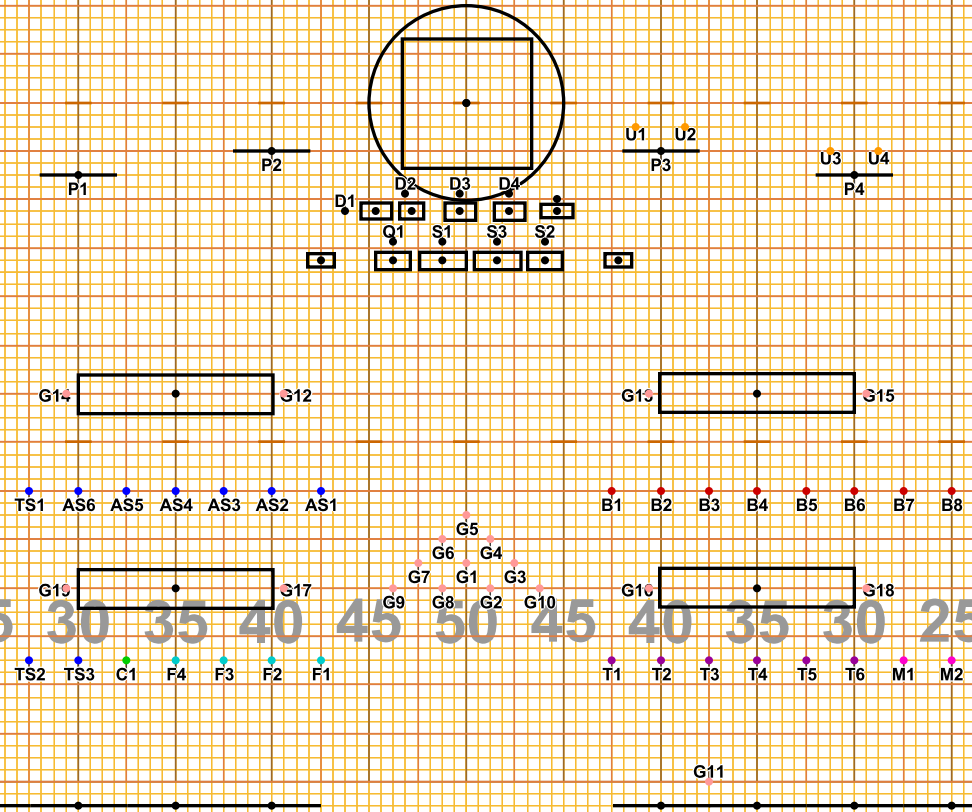
Welcome to this years program!  
Here is the layout!

F = Flutes  
C = Clarinets  
AS = Alto Sax  
TS = Tenor Sax

T= Trumpet  
M = Mello  
B = Baritone  
U = Tuba

S = Snare  
Q = Quad  
D = Bass

G= Guard



Top Of The Show!!

Tubas will start behind the props here, and the batterie will be in the pit!

G12-G19 are all holding material. If we have extra material, we should use it to fill in the space between G12-G15. Possibly Getting those strands of material out to the 30 yard line.

All winds will start in lines in between the fabric to mimic the wind/sand effect.

NOTE: G11 is an extra! We can use them on the stairs at the end. they can be used in the choreography up front, or as another soloist!

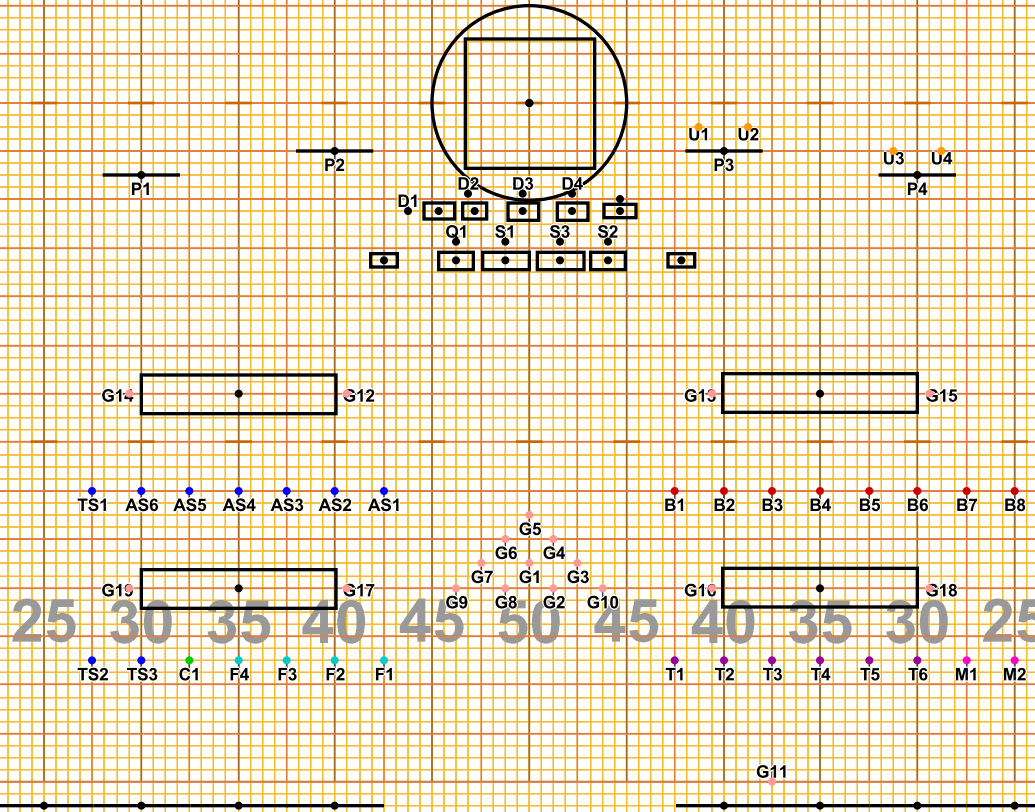
Director Viewpoint

Set #1 Counts: 0 Measures: 0

# Liberty Movement 1

Page 2  
Counts: 32  
Measures: 2-9

All hold with body work



Director Viewpoint

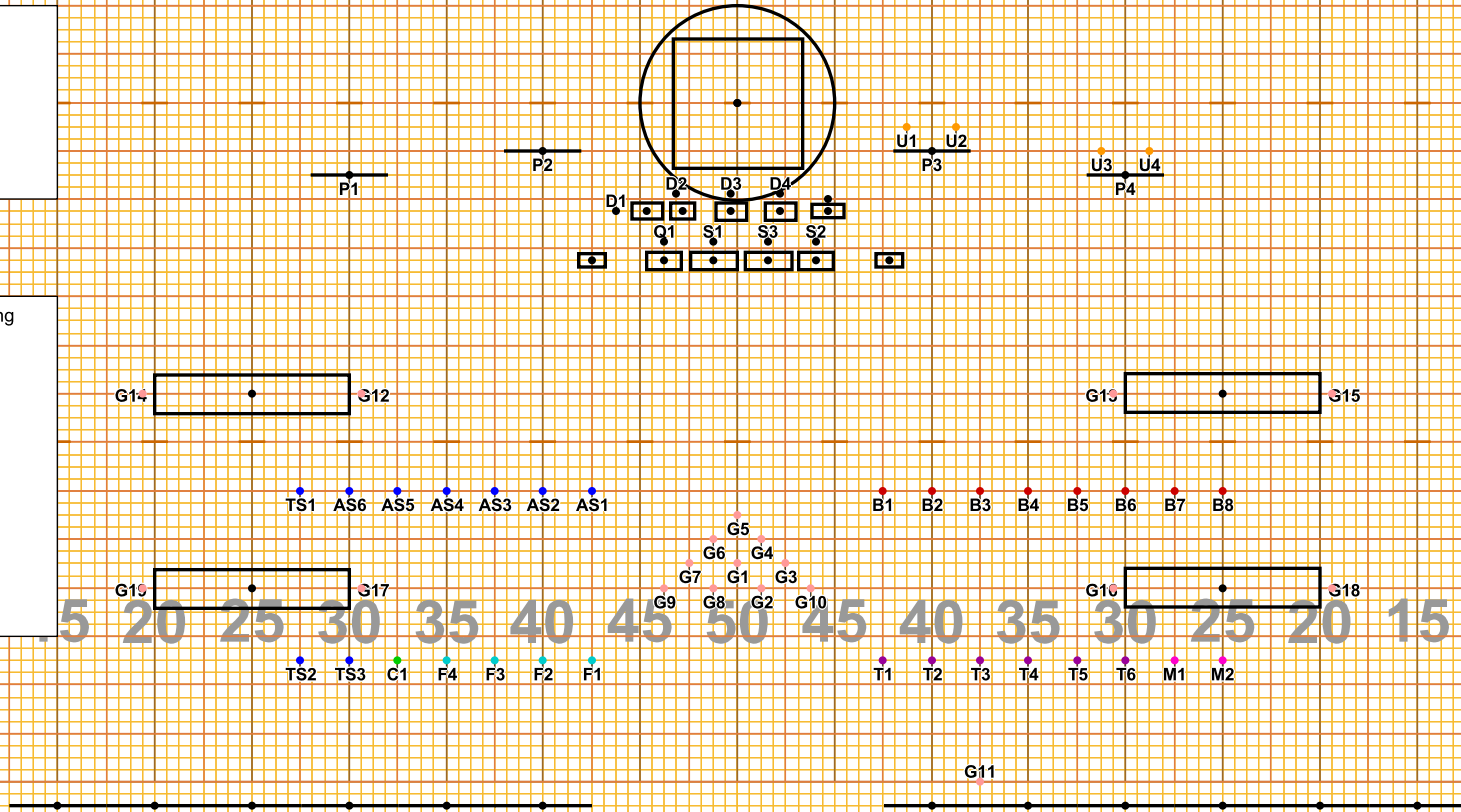
Set #2 Counts: 32 Measures: 2-9

# Liberty Movement 1

Page 3  
Counts: 12  
Measures: 10-13

Silk Props, and guard holding them, begin to move here.

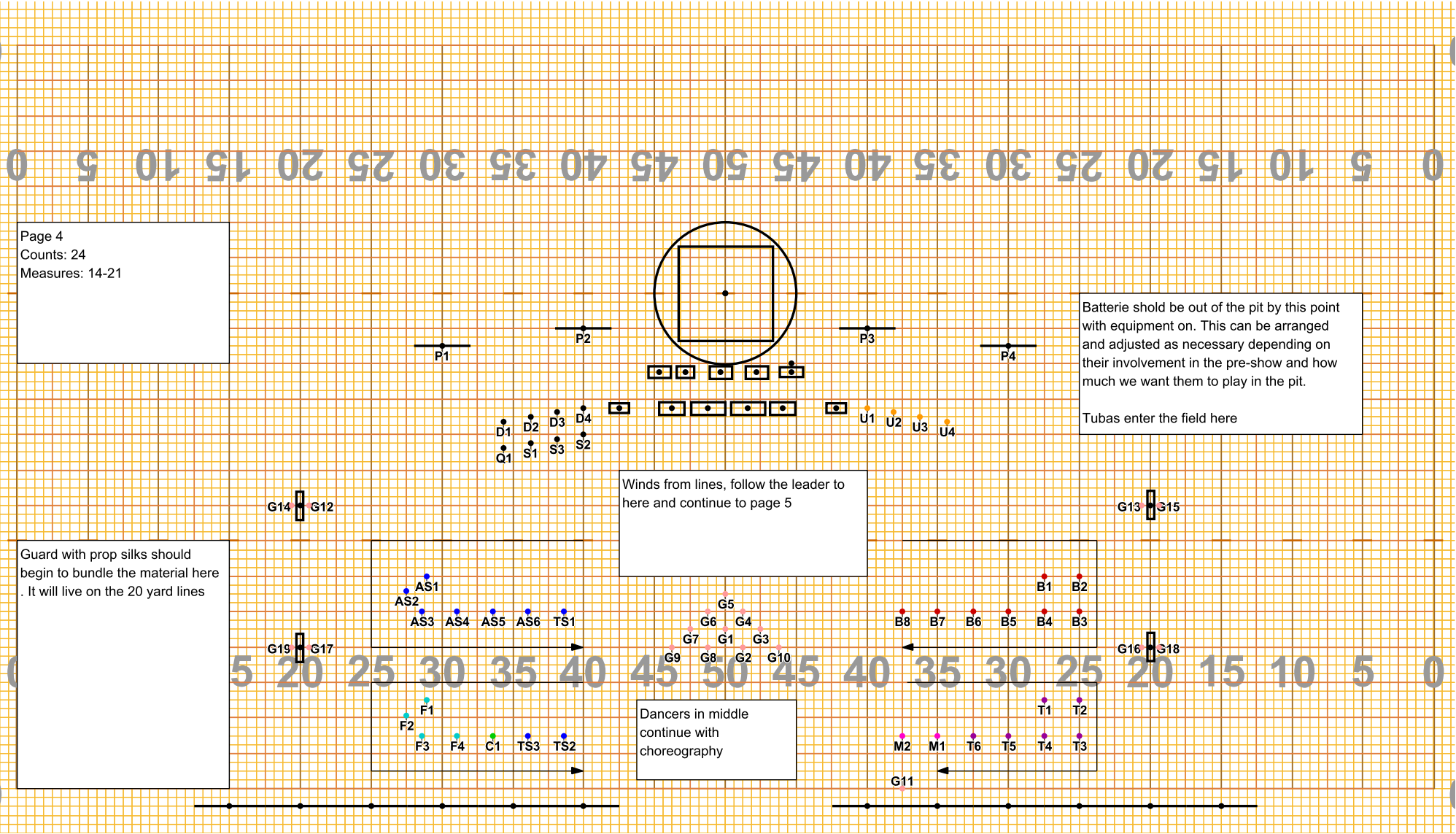
All others hold



Director Viewpoint

Set #3 Counts: 12 Measures: 10-13

# Liberty Movement 1



Director Viewpoint

Set #4 Counts: 24 Measures: 14-21

Page 4  
Counts: 24  
Measures: 14-21

Guard with prop silks should begin to bundle the material here. It will live on the 20 yard lines

Batterie should be out of the pit by this point with equipment on. This can be arranged and adjusted as necessary depending on their involvement in the pre-show and how much we want them to play in the pit.  
Tubas enter the field here

Winds from lines, follow the leader to here and continue to page 5

Dancers in middle continue with choreography

# Liberty Movement 1

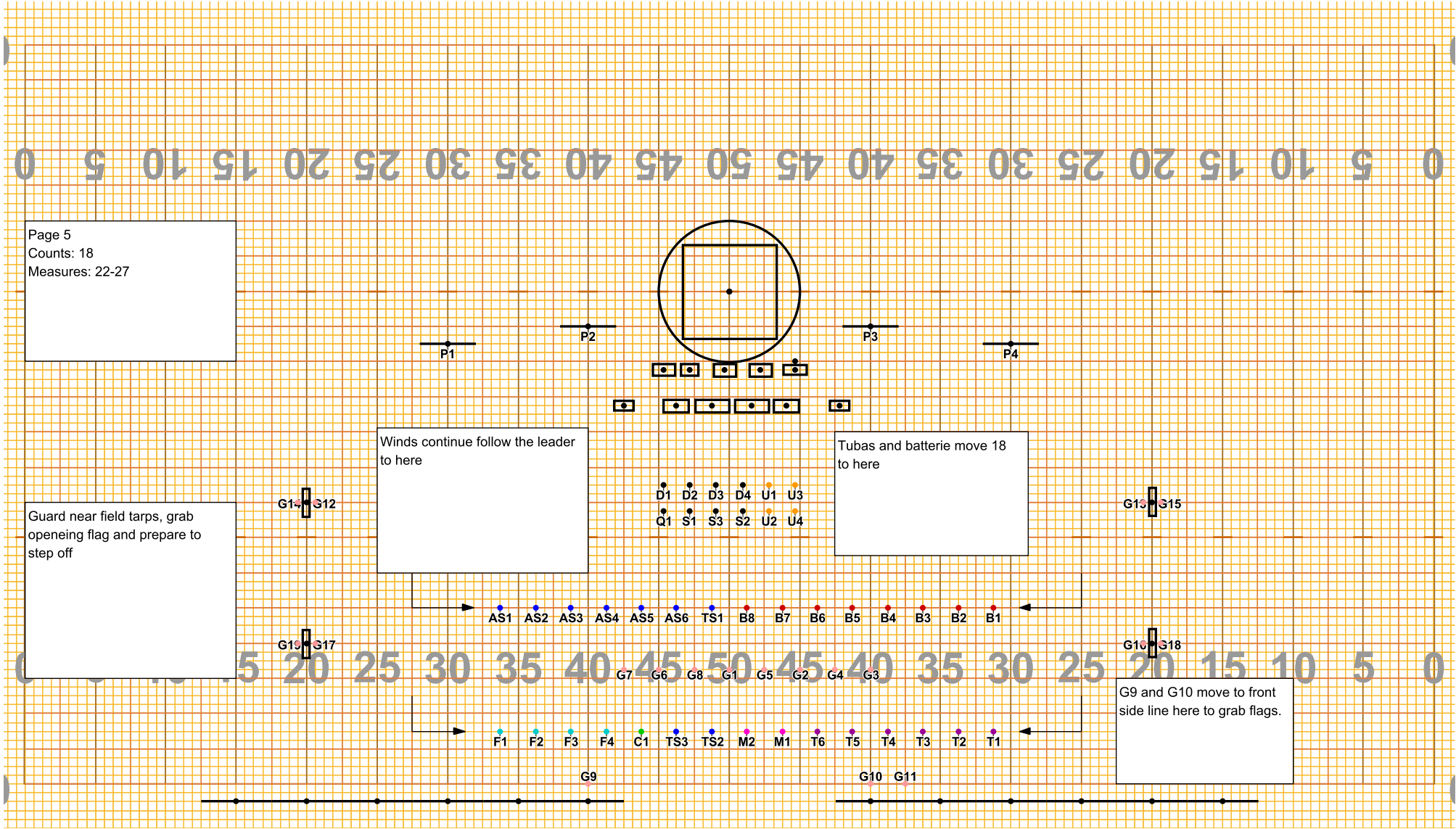
Page 5  
 Counts: 18  
 Measures: 22-27

Guard near field tarps, grab opening flag and prepare to step off

Winds continue follow the leader to here

Tubas and batterie move 18 to here

G9 and G10 move to front side line here to grab flags.



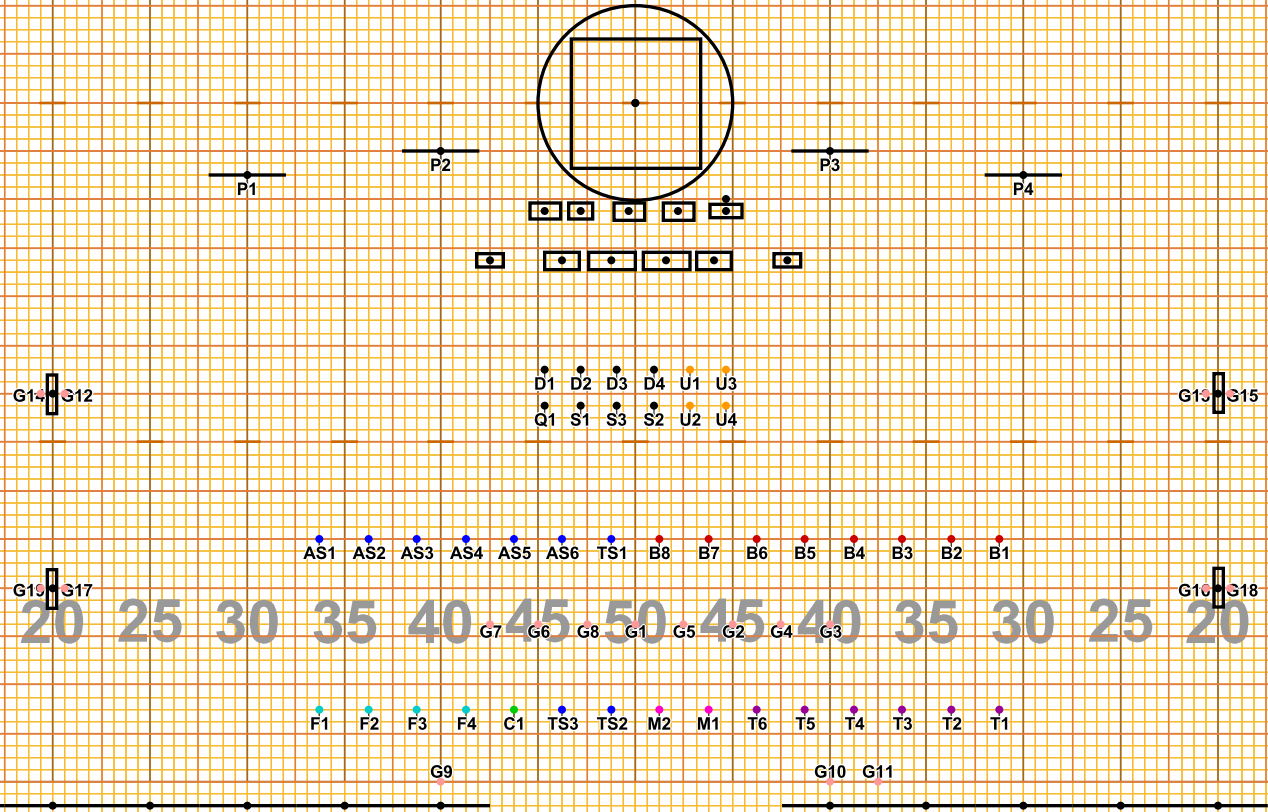
Director Viewpoint

# Liberty Movement 1

0 5 10 15 20 25 30 35 40 45 50 45 40 35 30 25 20 15 10 5 0

Page 6  
 Counts: 6  
 Measures: 28-29

All hold 6 with quick visual



0 5 10 15 20 25 30 35 40 45 50 45 40 35 30 25 20 15 10 5 0

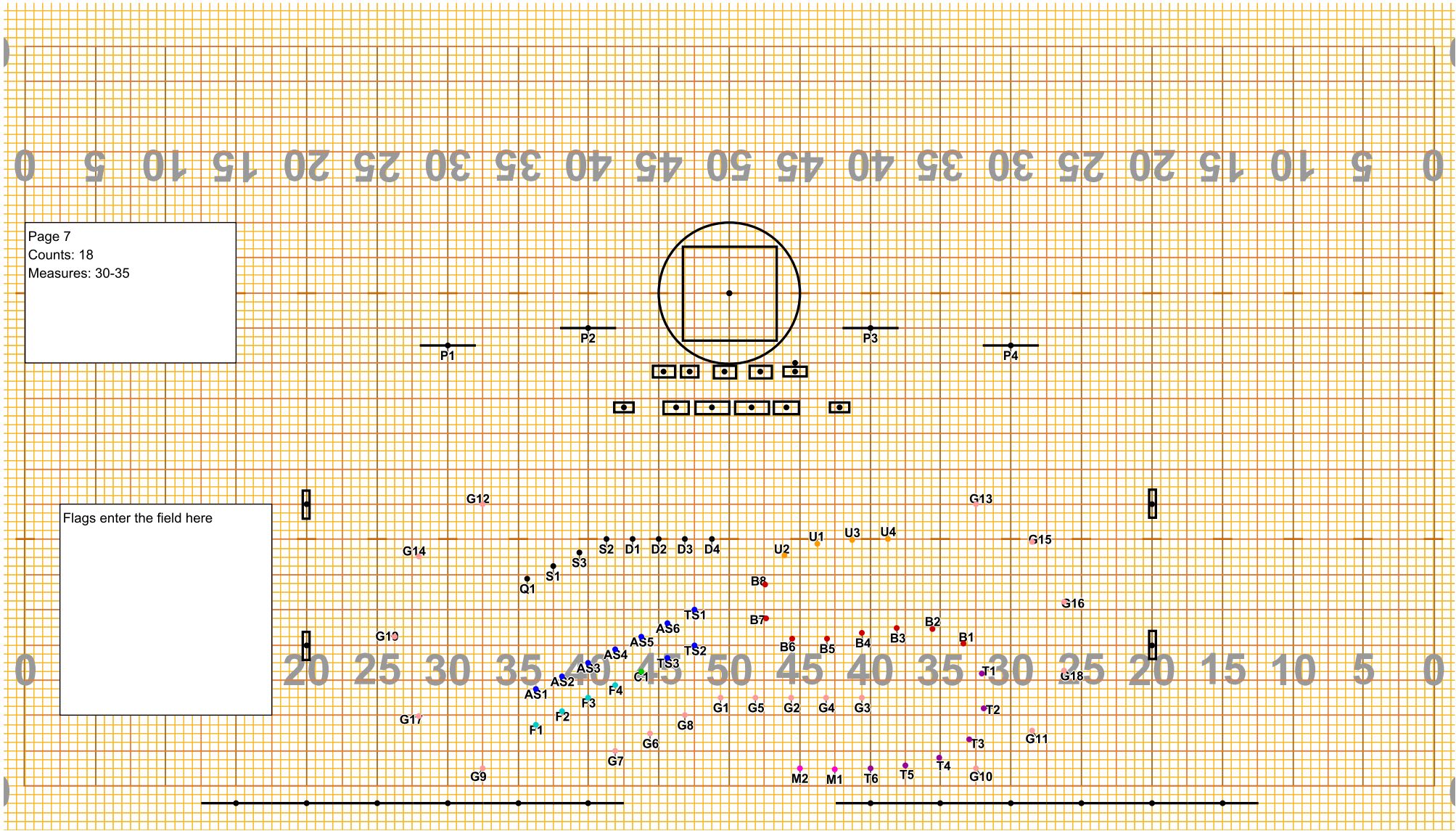
Director Viewpoint

Set #6 Counts: 6 Measures: 28-29

# Liberty Movement 1

Page 7  
Counts: 18  
Measures: 30-35

Flags enter the field here



Director Viewpoint

Set #7 Counts: 18 Measures: 30-35

# Liberty Movement 1

Page 8  
Counts: 12  
Measures: 36-39

0 5 10 15 20 25 30 35 40 45 50 45 40 35 30 25 20 15 10 5 0

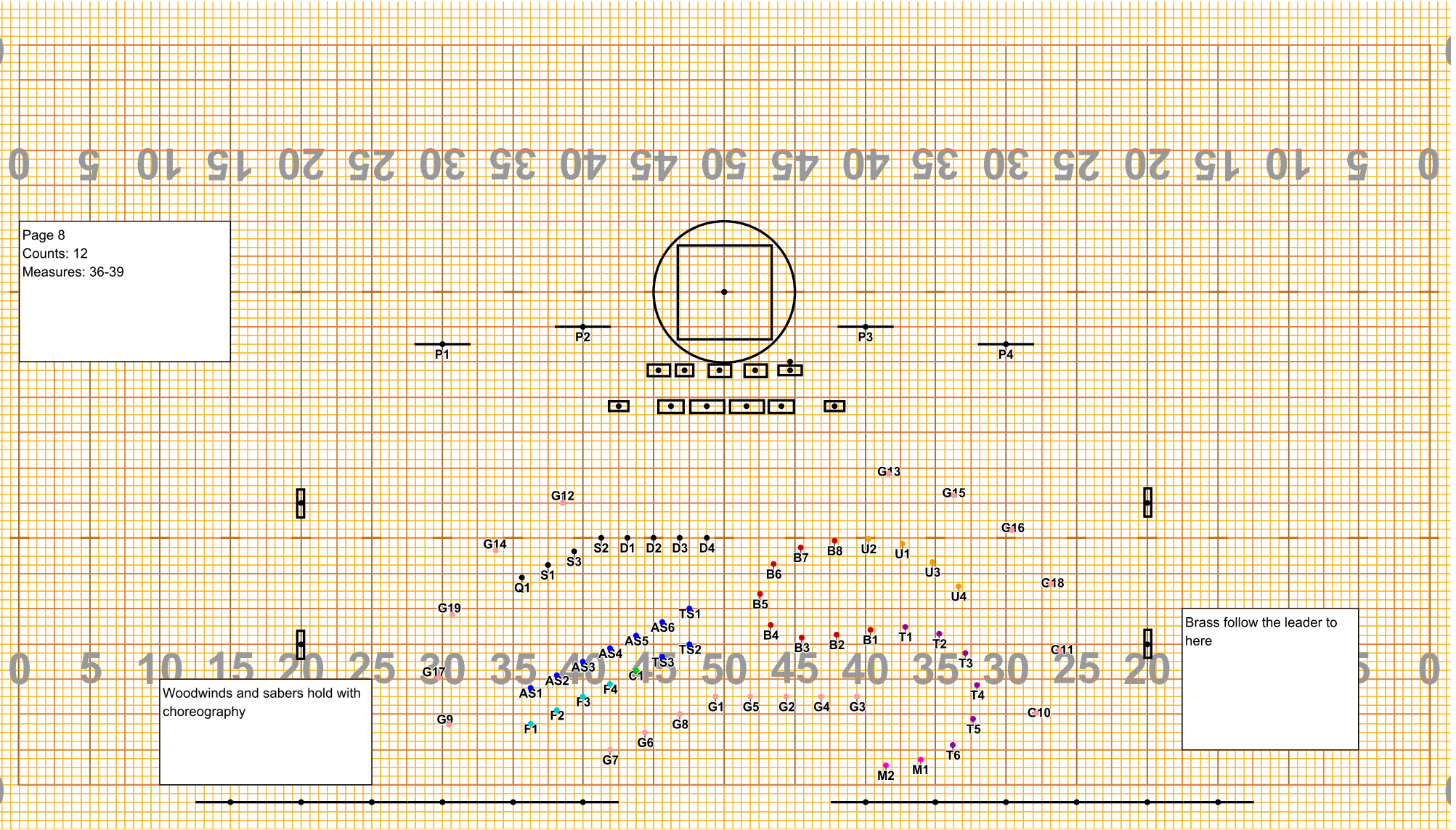
0 5 10 15 20 25 30 35 40 45 50 45 40 35 30 25 20 5 0

Woodwinds and sabers hold with choreography

Brass follow the leader to here

Director Viewpoint

Set #8 Counts: 12 Measures: 36-39





# Liberty Movement 1

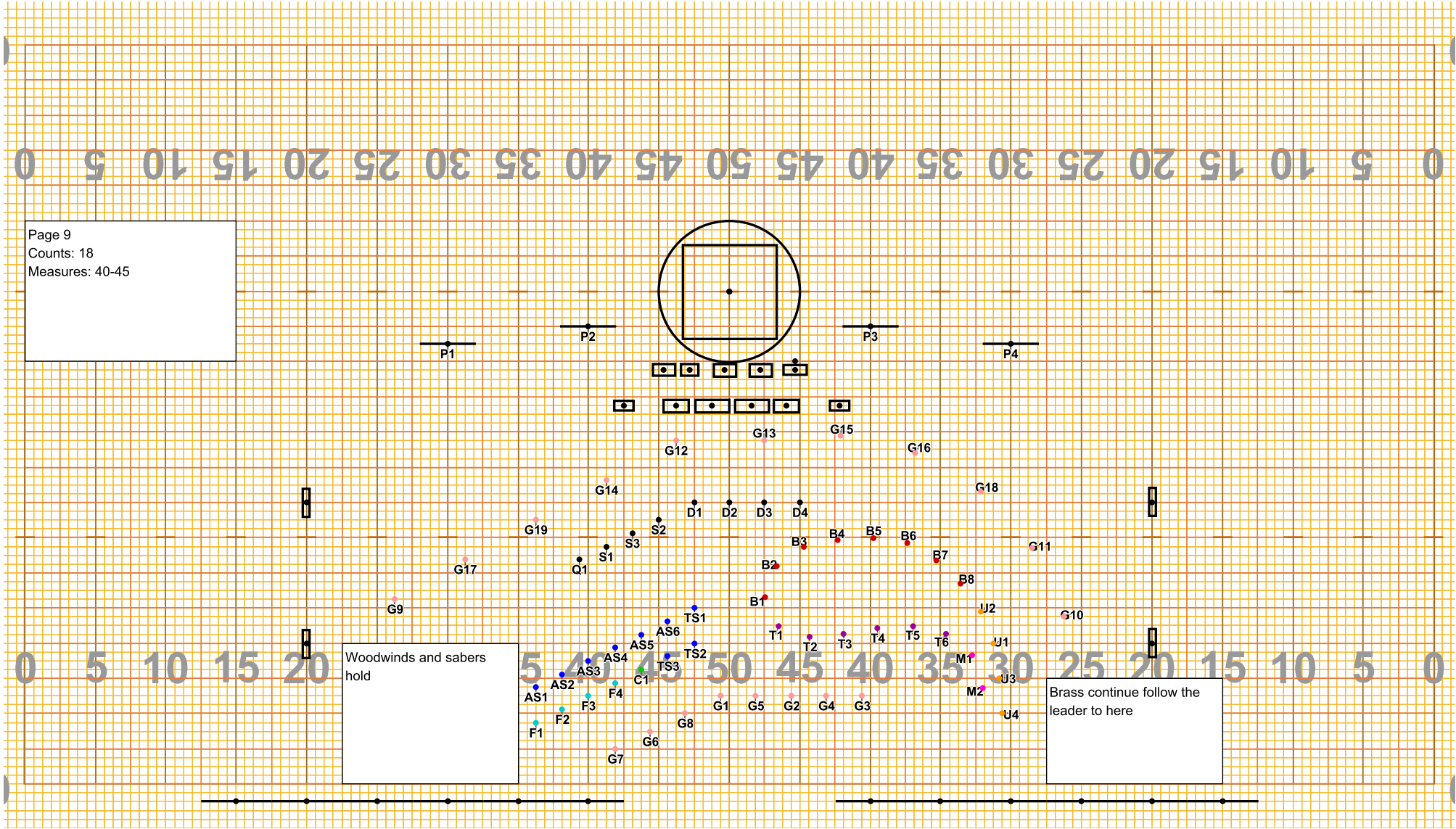
Page 9  
Counts: 18  
Measures: 40-45

Woodwinds and sabers  
hold

Brass continue follow the  
leader to here

Director Viewpoint

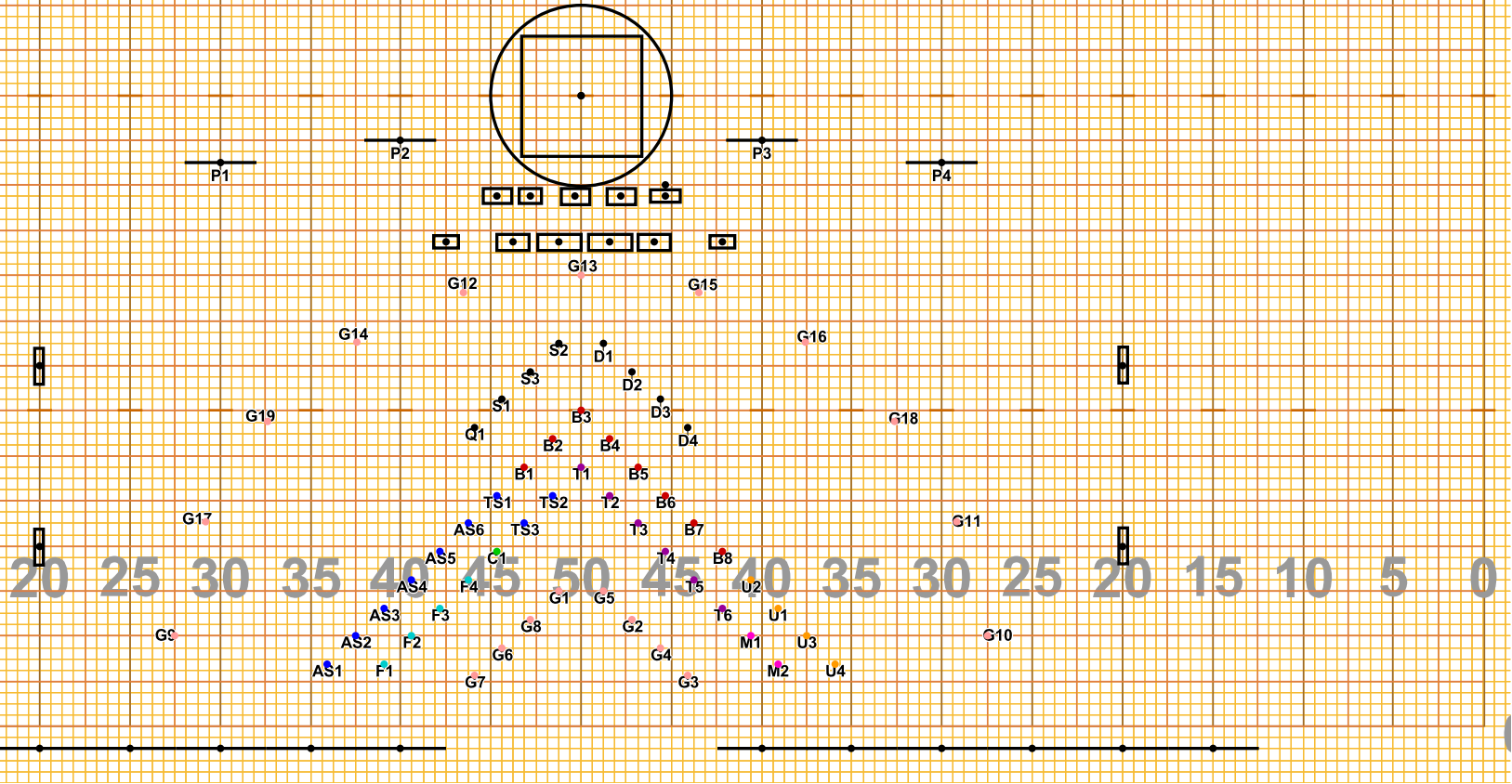
Set #9 Counts: 18 Measures: 40-45



# Liberty Movement 1

Page 10  
Counts: 12  
Measures: 46-49

All move 12 to here



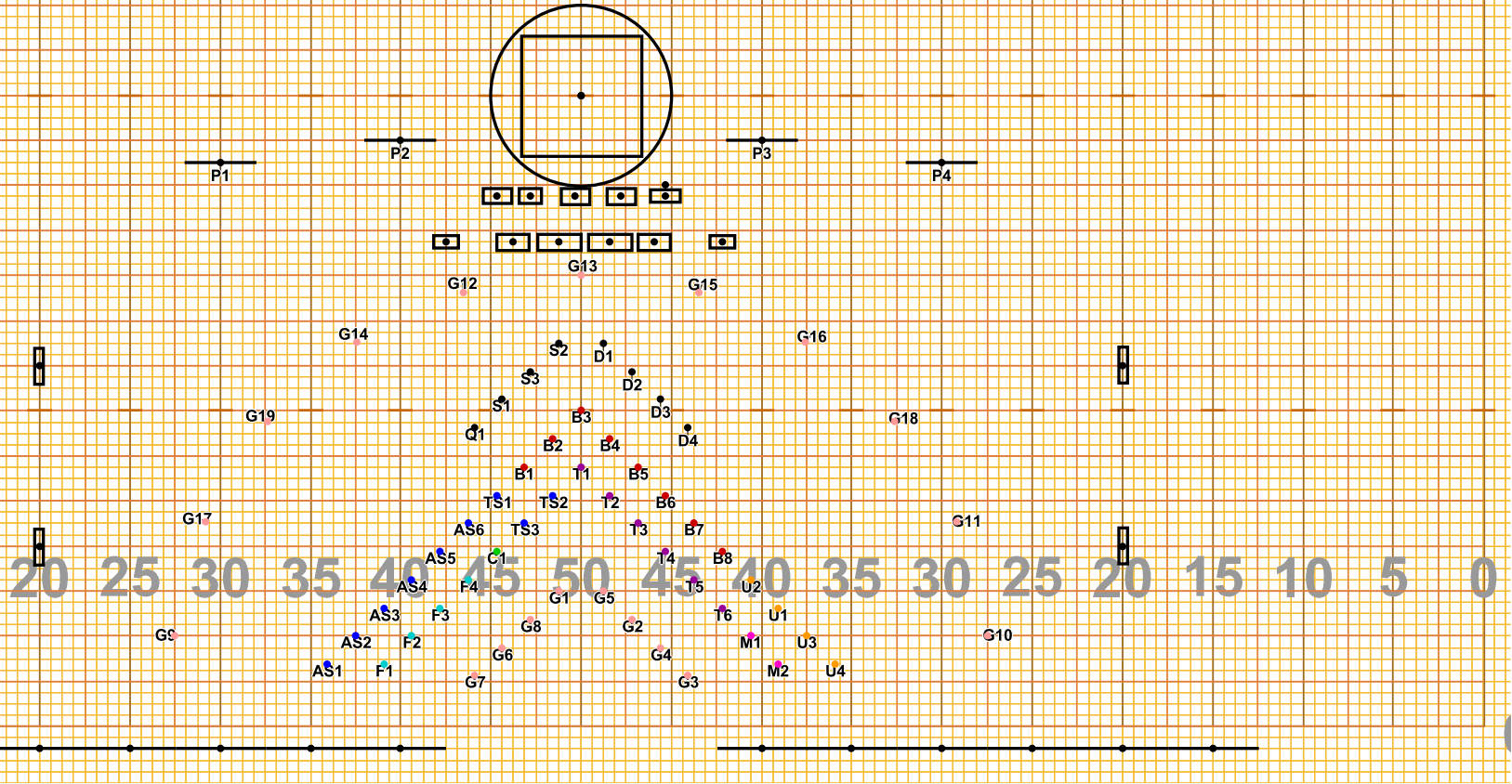
Director Viewpoint

Set #10 Counts: 12 Measures: 46-49

# Liberty Movement 1

Page 11  
Counts: 12  
Measures: 50-53

All hold for musical impact



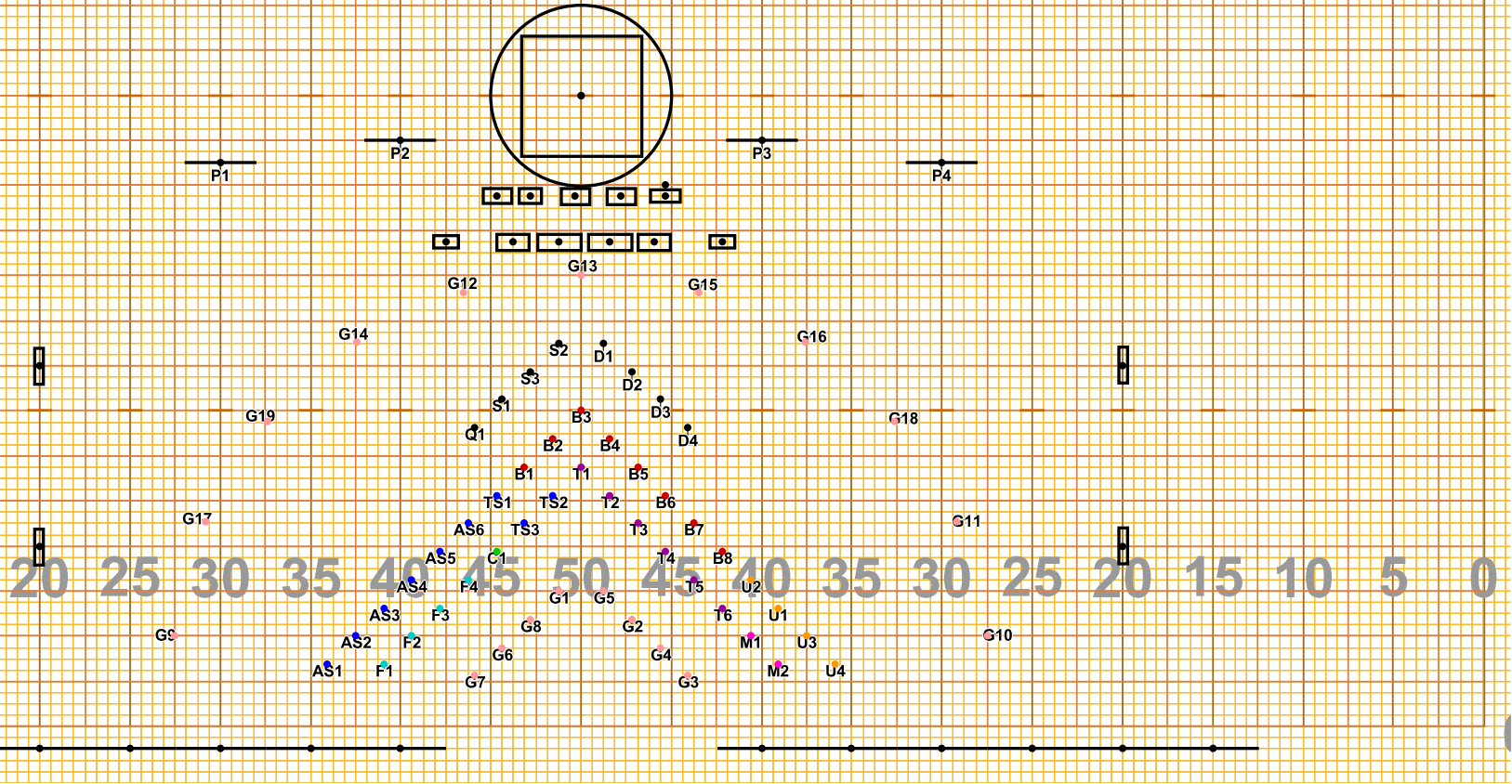
Director Viewpoint

Set #11 Counts: 12 Measures: 50-53

# Liberty Movement 1

Page 12  
Counts: 8  
Measures: 54-55

All hold for unison visual moment

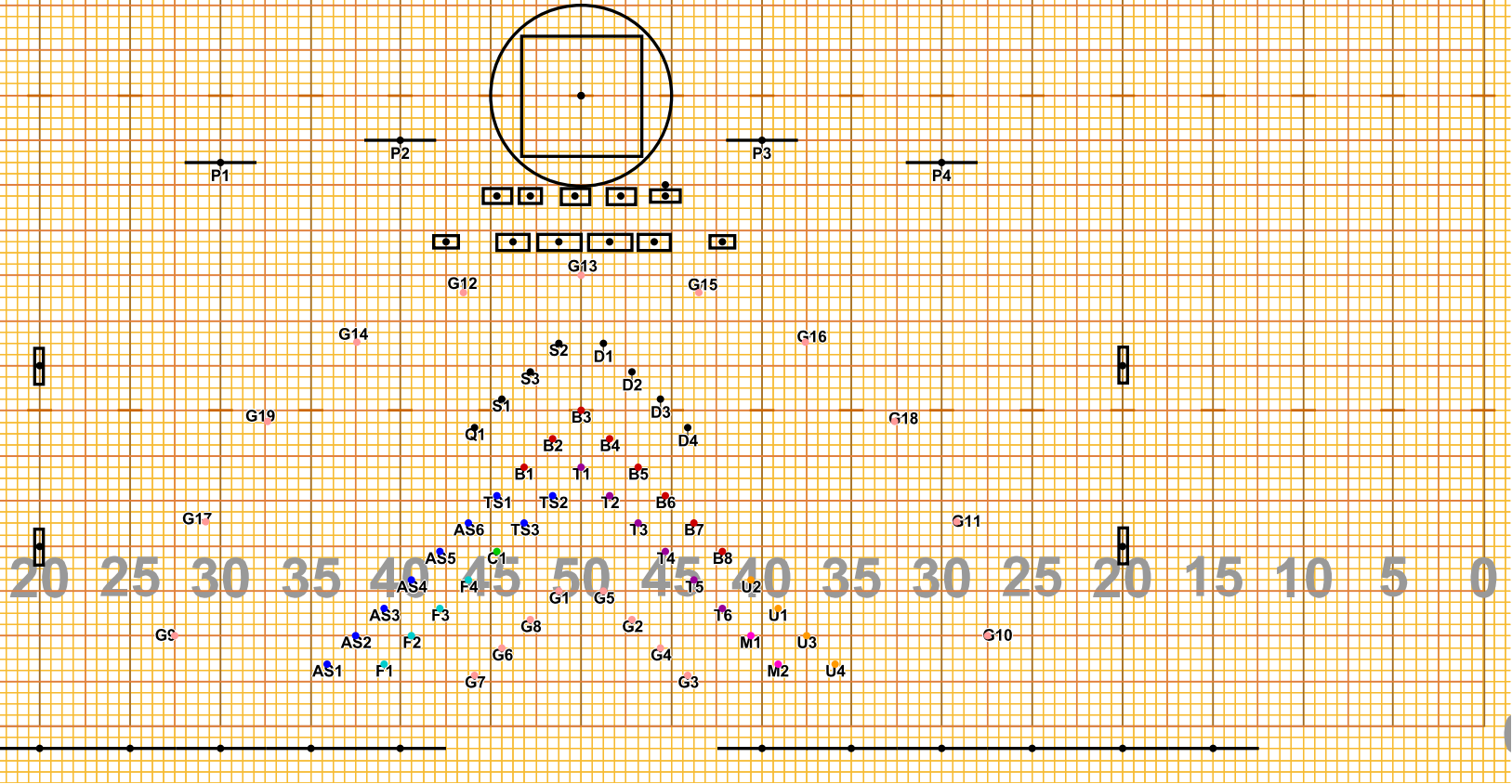


Director Viewpoint

# Liberty Movement 1

Page 13  
Counts: 8  
Measures: 56-57

All hold with accented body work

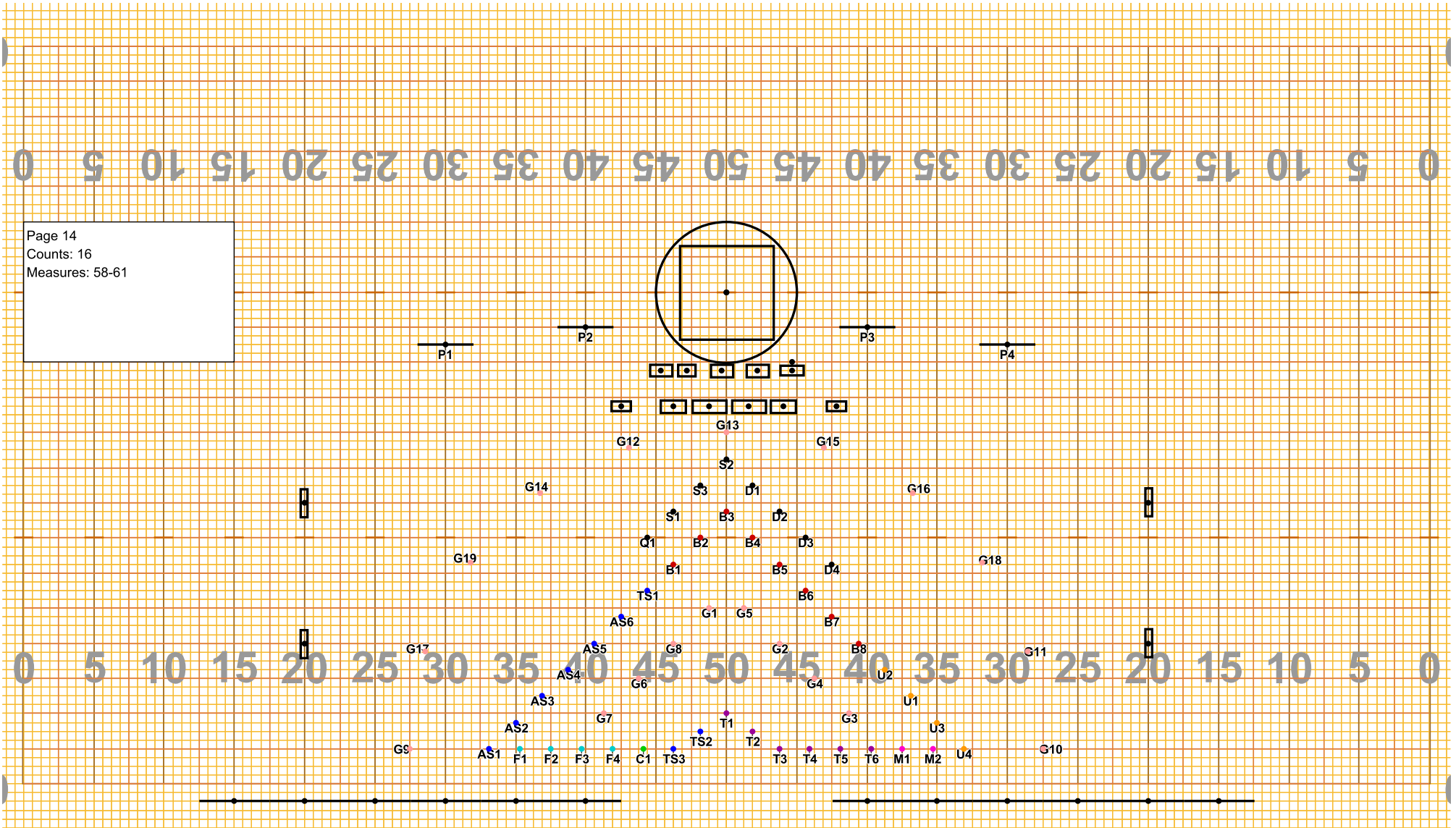


Director Viewpoint

Set #13 Counts: 8 Measures: 56-57

# Liberty Movement 1

Page 14  
Counts: 16  
Measures: 58-61



Director Viewpoint

Set #14 Counts: 16 Measures: 58-61

# Liberty Movement 1

Page 15  
Counts: 28  
Measures: 62-68

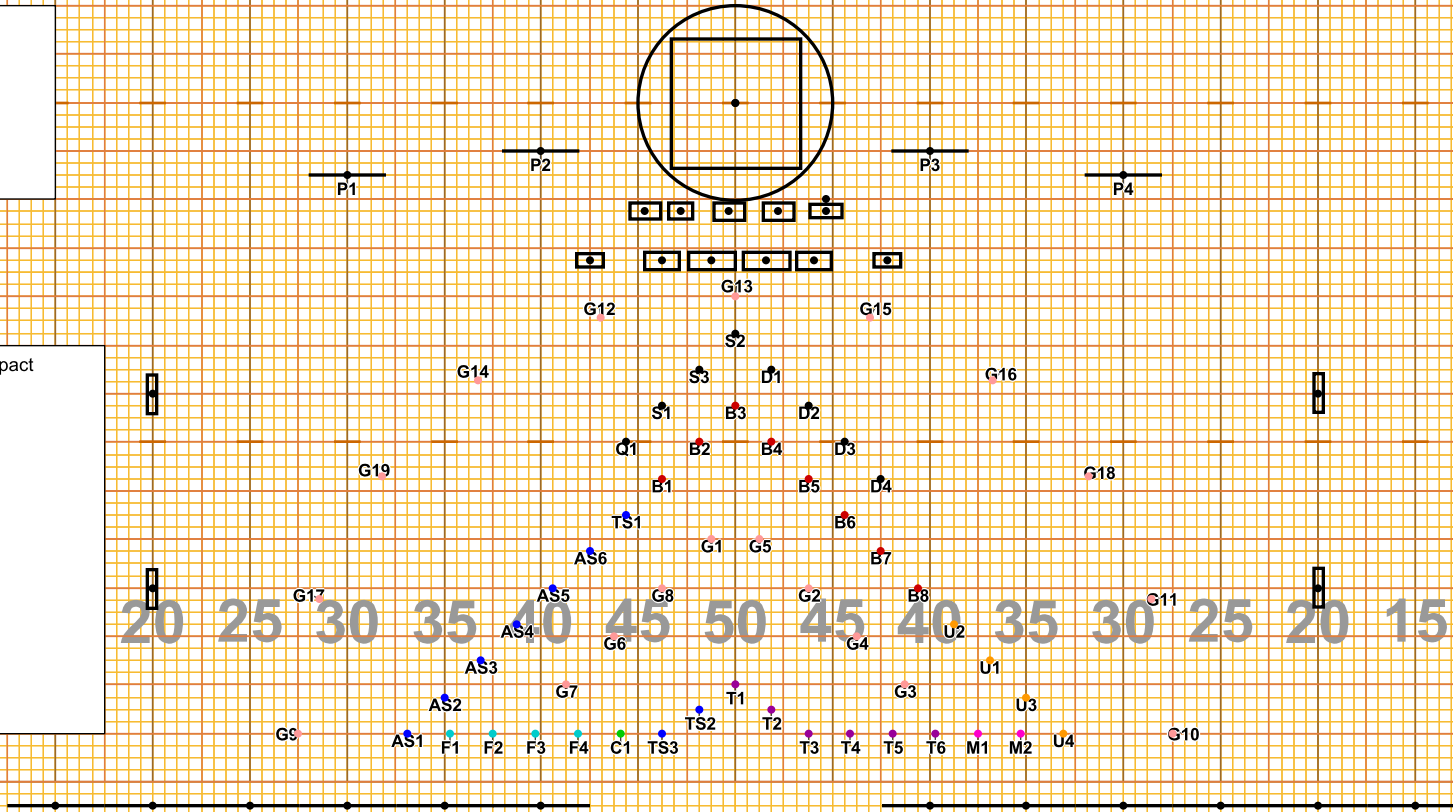
All hold for musical impact

0 5 10 15 20 25 30 35 40 45 50 45 40 35 30 25 20 15 10 5 0

0 5 10 15 20 25 30 35 40 45 50 45 40 35 30 25 20 15 10 5 0

0

0



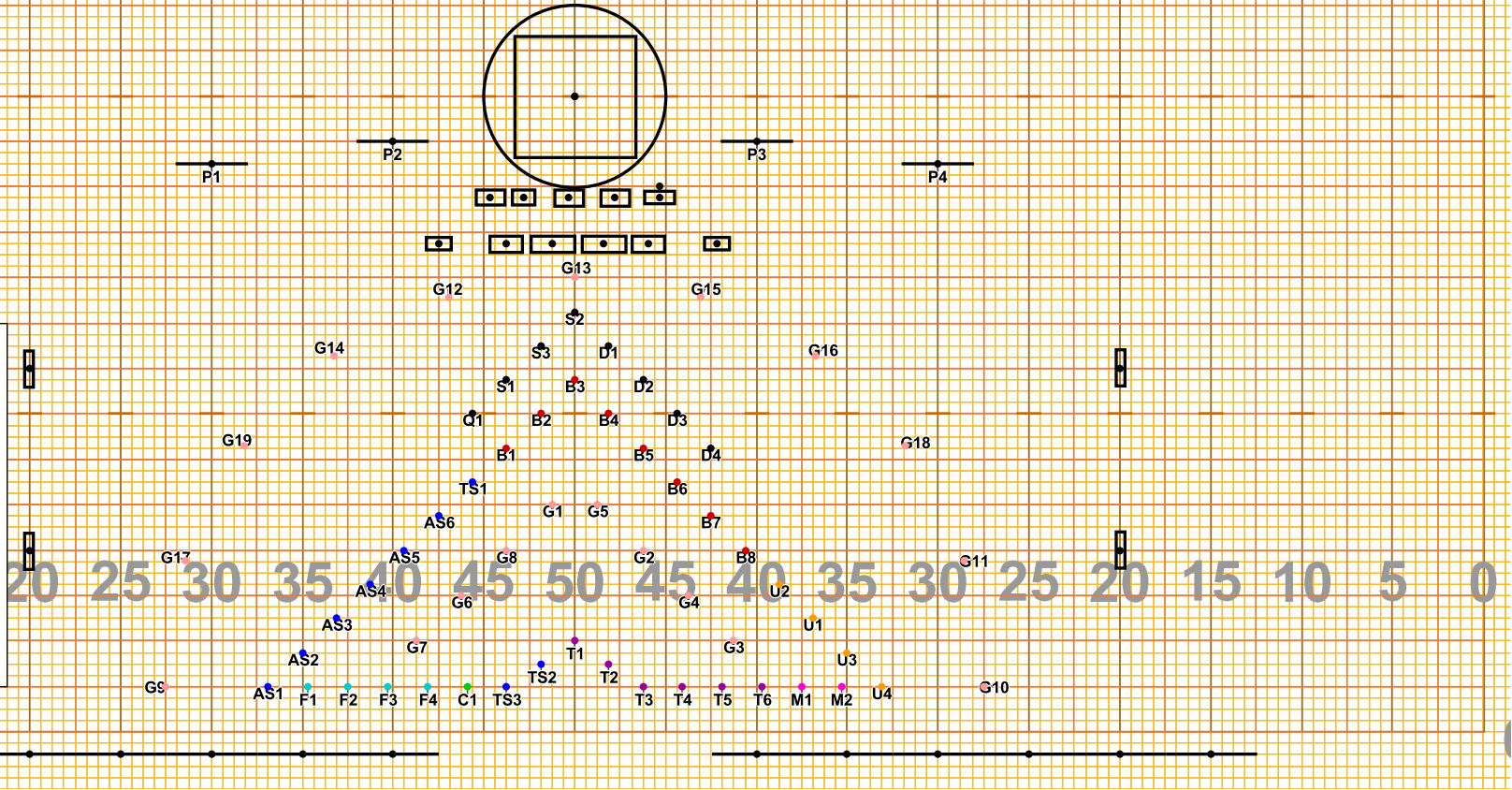
Director Viewpoint

Set #15 Counts: 28 Measures: 62-68

# Liberty Movement 1

Page 16  
Counts: 8  
Measures: 69-70

All hold for 8 count silence, and  
prepare to step off.



Director Viewpoint

Set #16 Counts: 8 Measures: 69-70



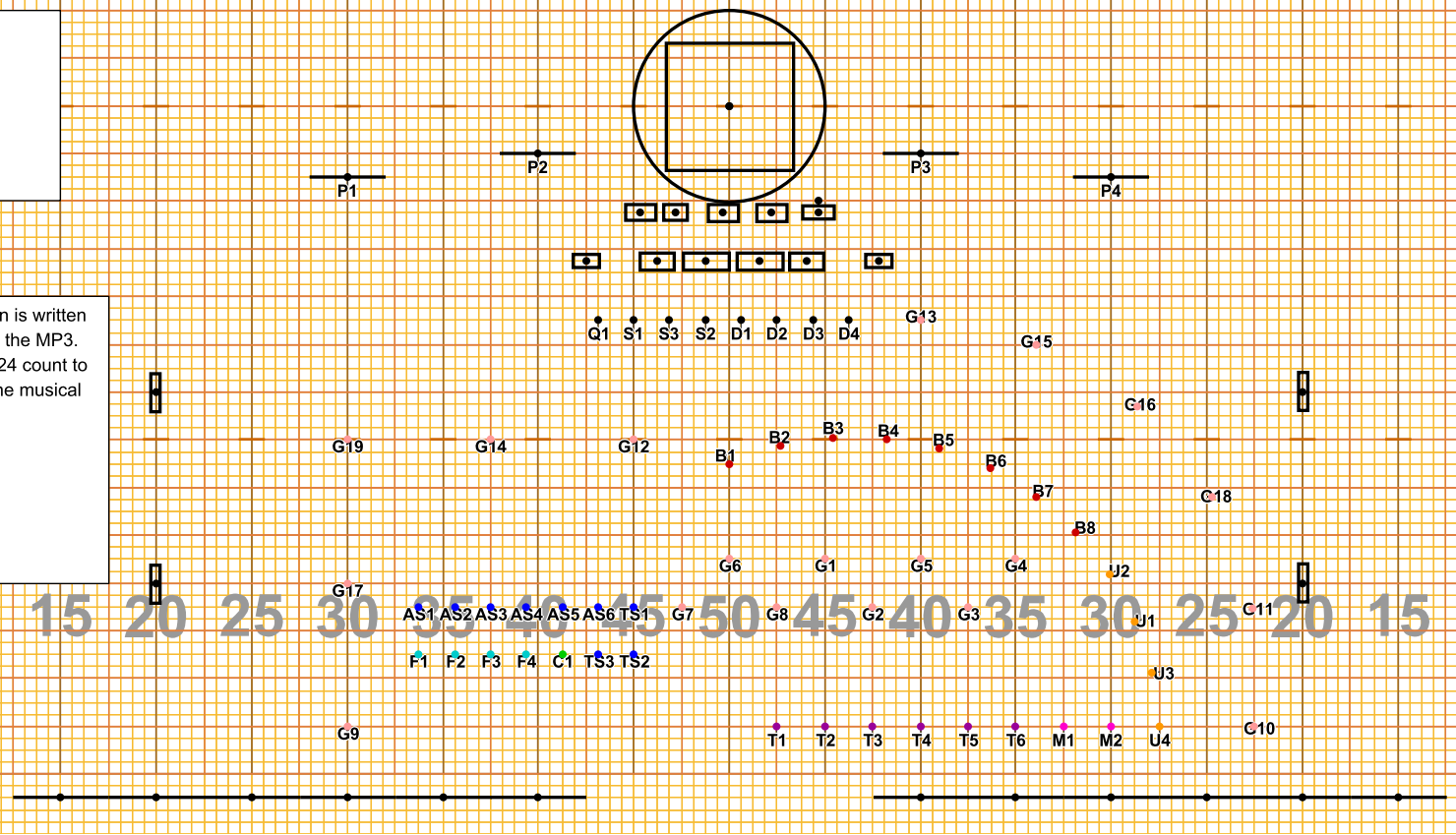
# Liberty Movement 1

0 5 10 15 20 25 30 35 40 45 50 55 60 65 70 75 80

Page 17  
Counts: 24  
Measures: 71-78

This phrase in the animation is written as 18 counts to line up with the MP3. All performers should take 24 count to arrive here to line up with the musical score.

0 5 10 15 20 25 30 35 40 45 50 55 60 65 70 75 80

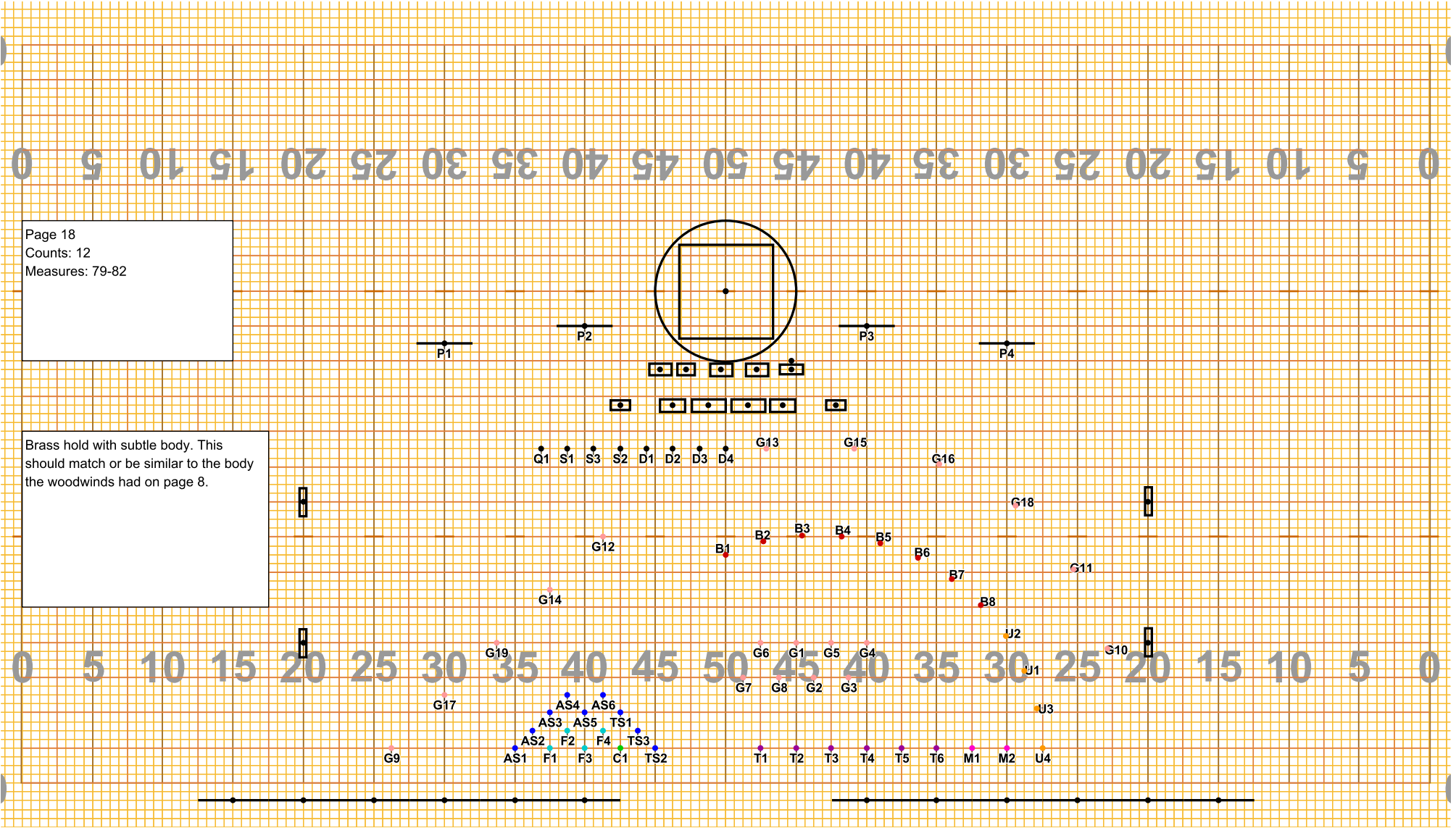


Director Viewpoint

# Liberty Movement 1

Page 18  
Counts: 12  
Measures: 79-82

Brass hold with subtle body. This should match or be similar to the body the woodwinds had on page 8.

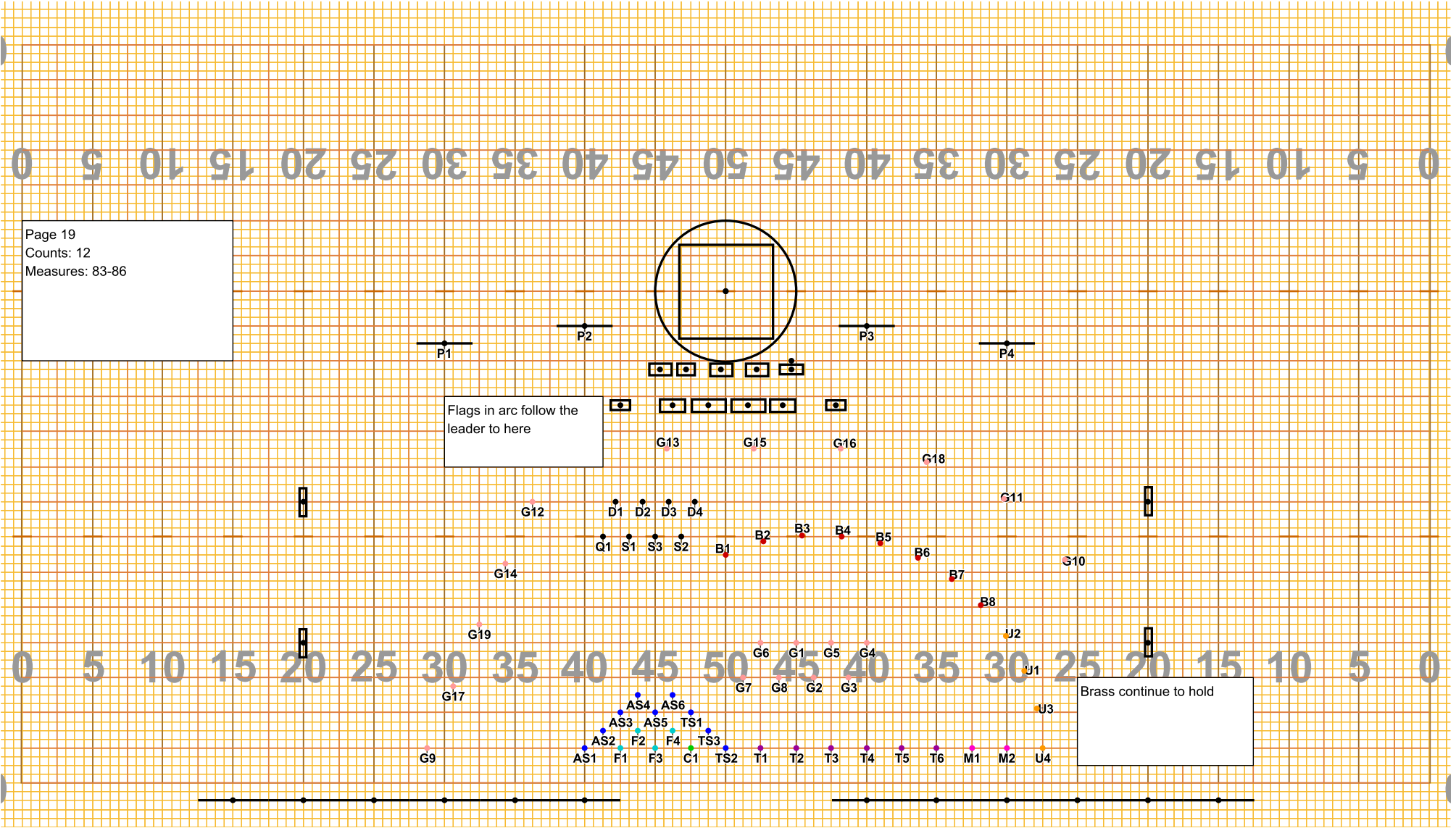


Director Viewpoint

Set #18 Counts: 12 Measures: 79-82

# Liberty Movement 1

Page 19  
Counts: 12  
Measures: 83-86



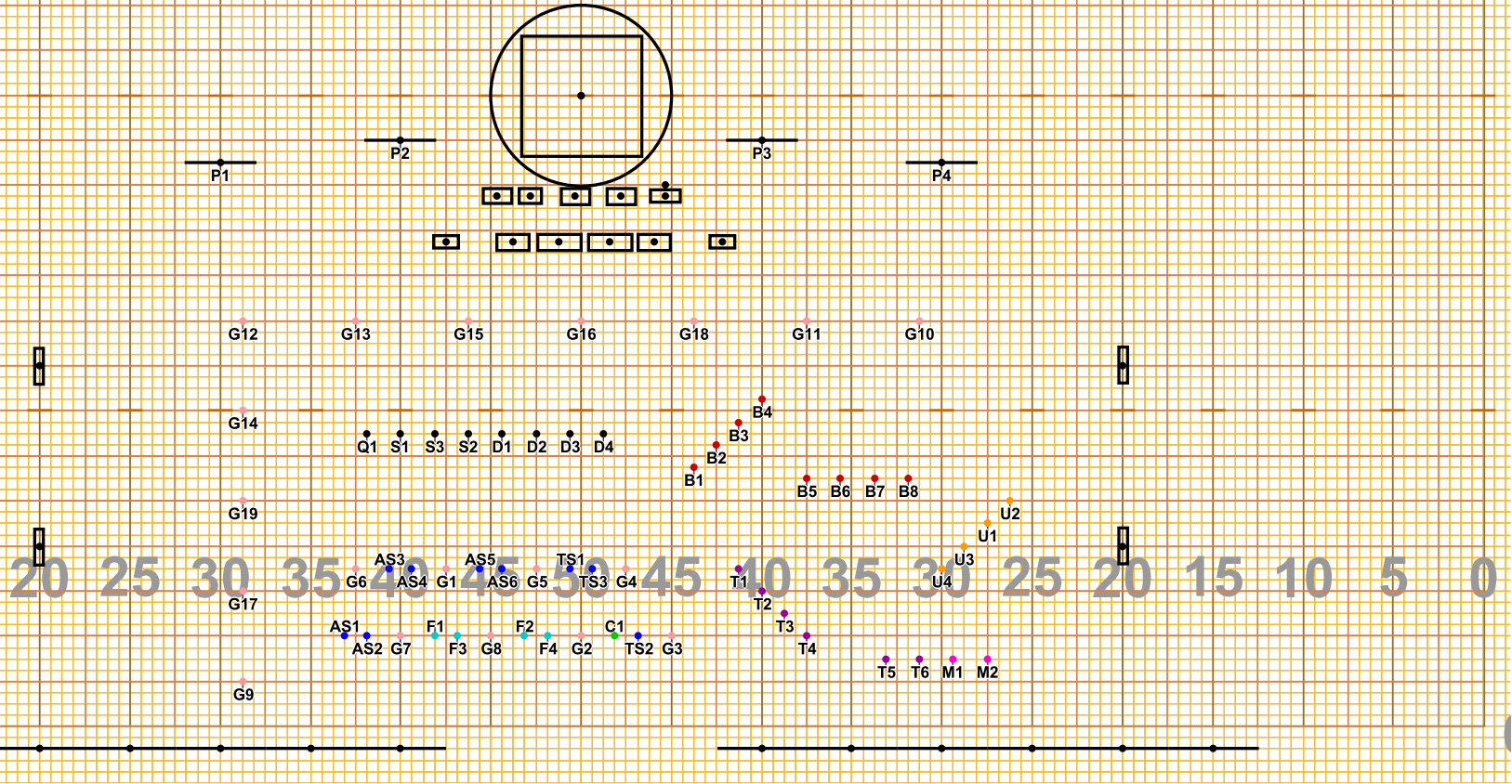
Director Viewpoint

Set #19 Counts: 12 Measures: 83-86

# Liberty Movement 1

Page 20  
Counts: 12  
Measures: 87-90

All move 12  
The sabers have large steps here.  
This should be simple, transitional  
work for them.



Director Viewpoint

# Liberty Movement 1

Page 21  
Counts: 12  
Measures: 91-94

Batterie follow the leader to here

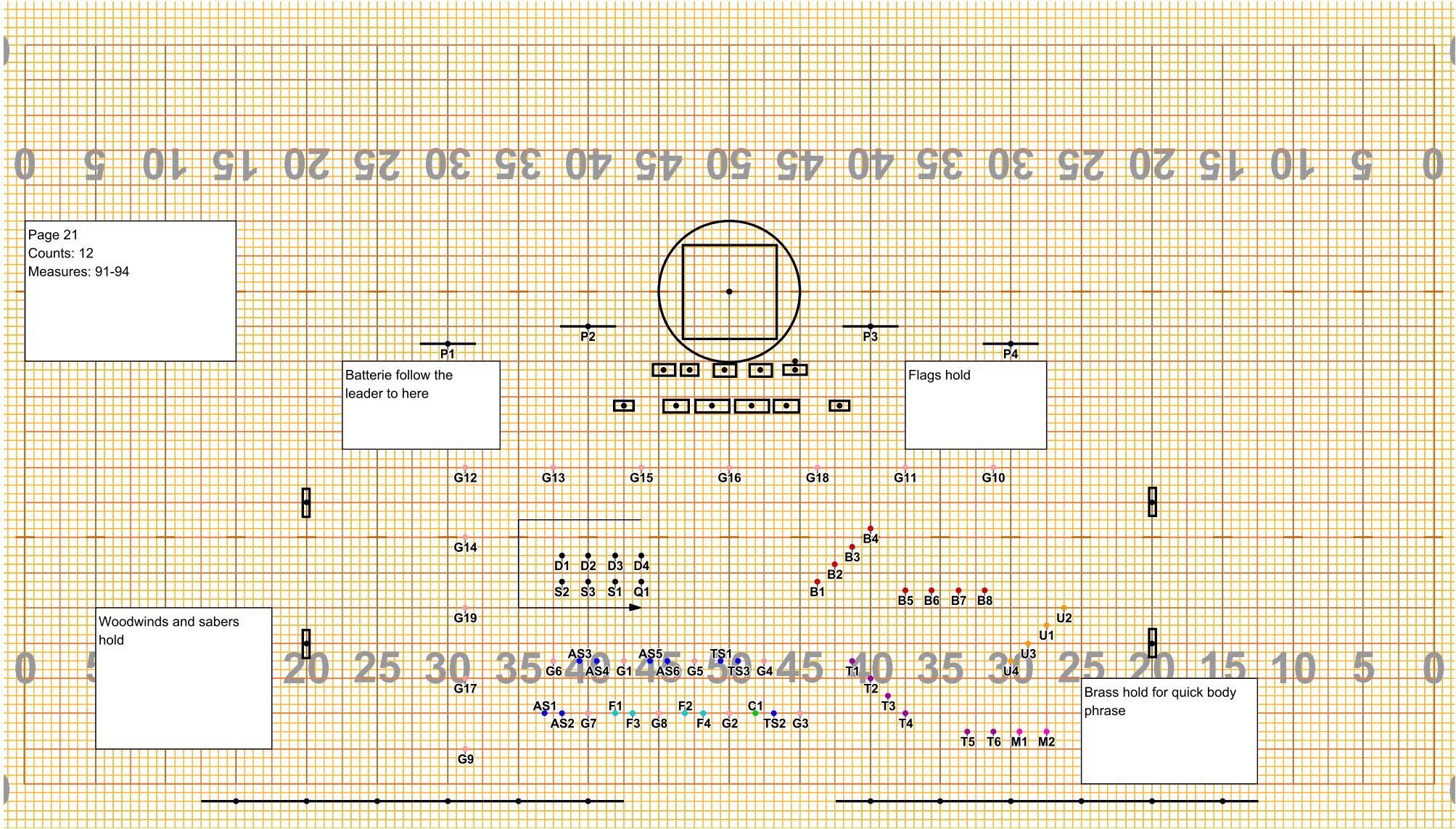
Flags hold

Woodwinds and sabers hold

Brass hold for quick body phrase

Director Viewpoint

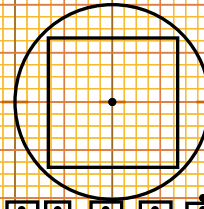
Set #21 Counts: 12 Measures: 91-94



# Liberty Movement 1

Page 22  
Counts: 12  
Measures: 95-98

Flags hold



P1

P2

P3

P4

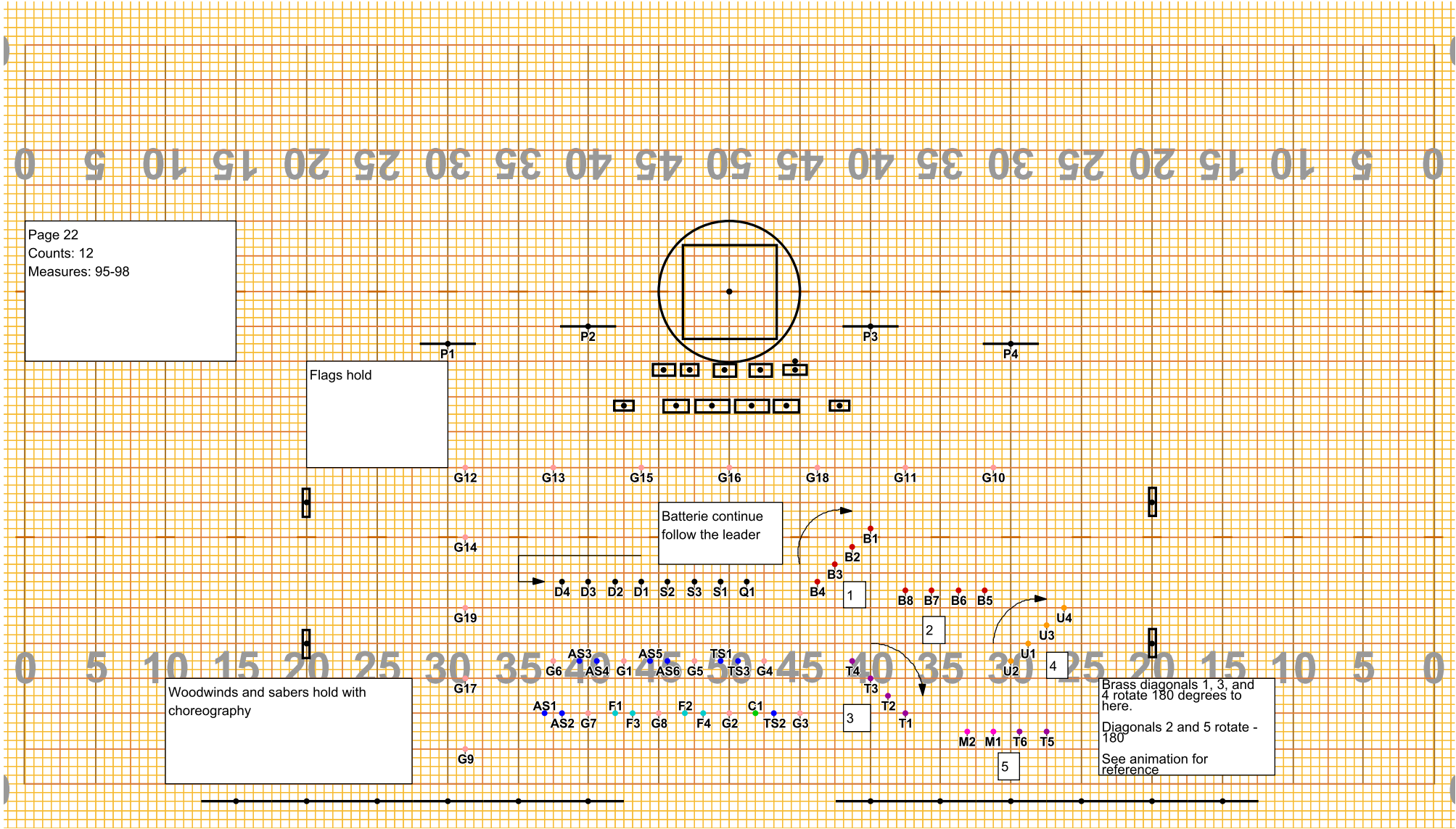
Batterie continue  
follow the leader

Woodwinds and sabers hold with  
choreography

Brass diagonals 1, 3, and  
4 rotate 180 degrees to  
here.  
Diagonals 2 and 5 rotate -  
180  
See animation for  
reference

Director Viewpoint

Set #22 Counts: 12 Measures: 95-98



# Liberty Movement 1

Page 23  
Counts: 12  
Measures: 99-102

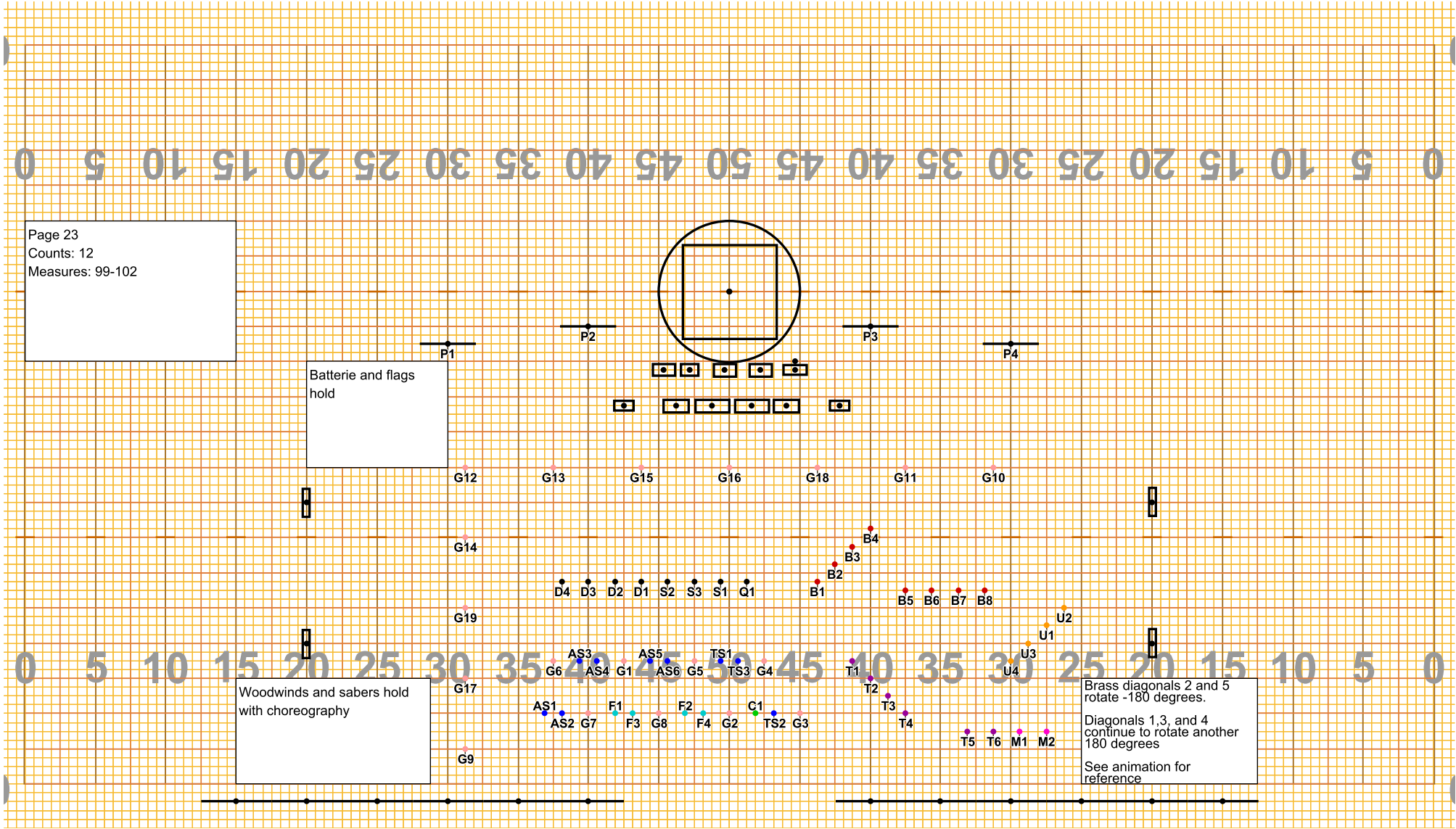
Batterie and flags hold

Woodwinds and sabers hold with choreography

Brass diagonals 2 and 5 rotate -180 degrees.  
Diagonals 1, 3, and 4 continue to rotate another 180 degrees  
See animation for reference

Director Viewpoint

Set #23 Counts: 12 Measures: 99-102

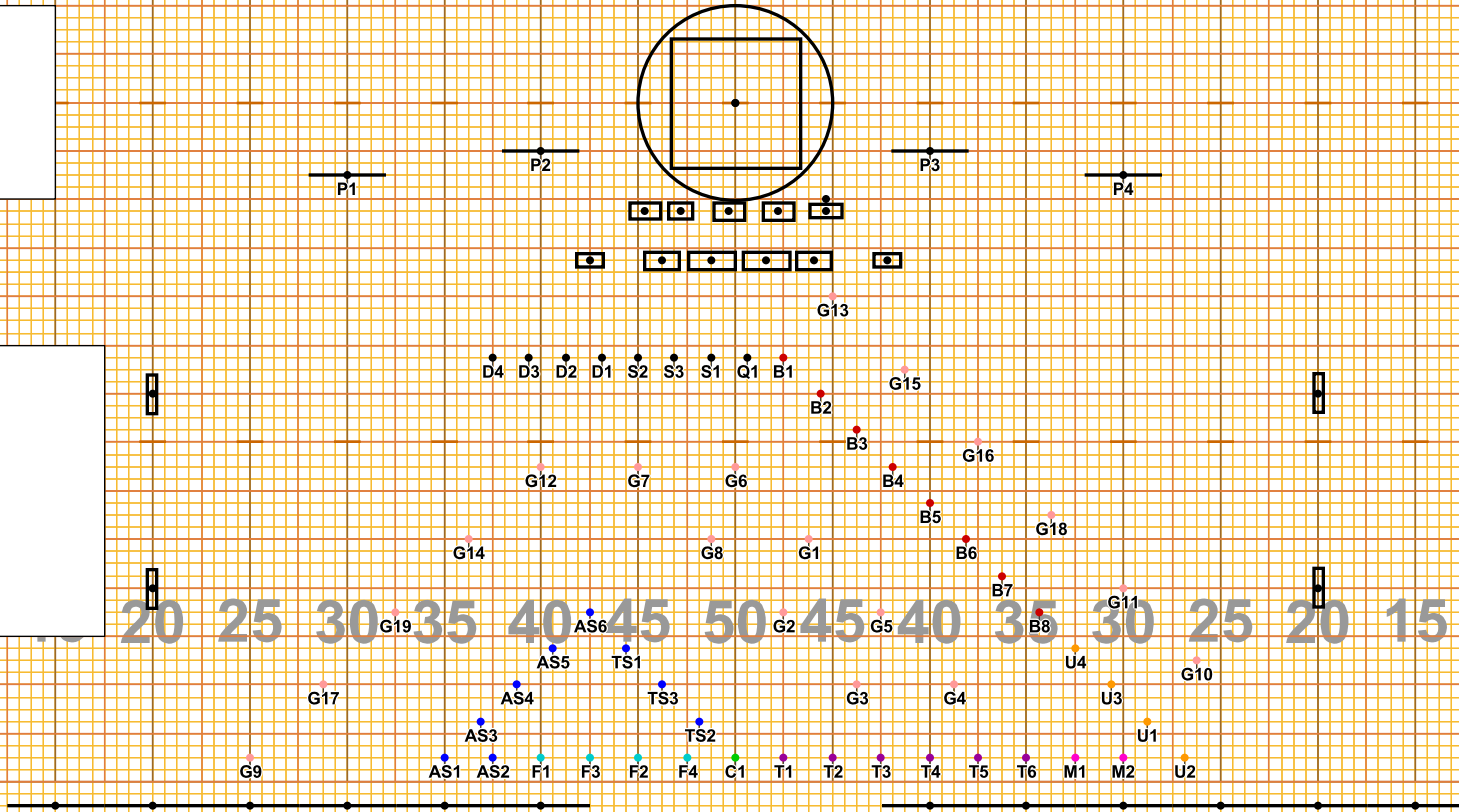


# Liberty Movement 1

Page 24  
Counts: 24  
Measures: 103-110

All move 24 counts to here

20 25 30 35 40 45 50 45 40 35 30 25 20 15 10 5 0



Director Viewpoint

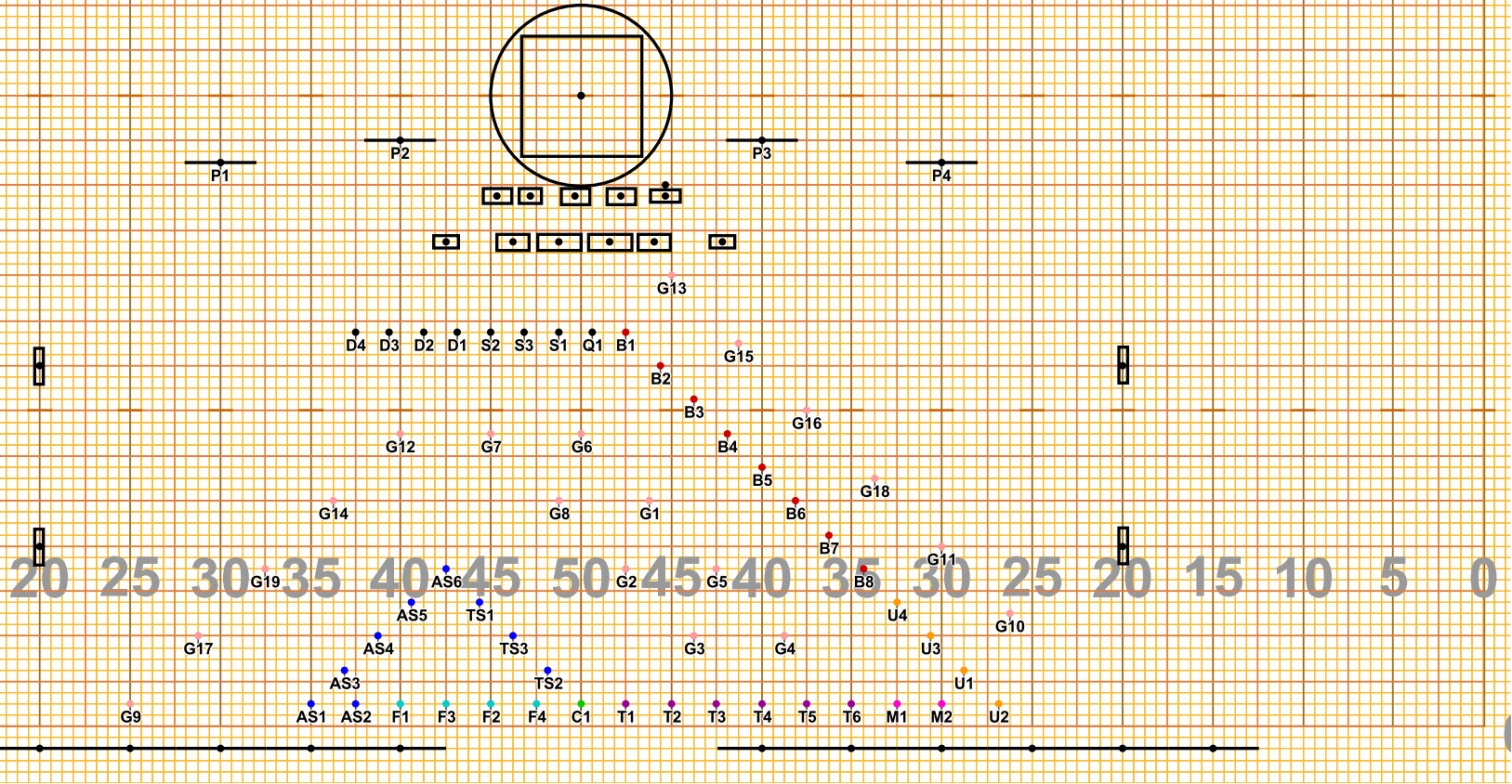
Set #24 Counts: 24 Measures: 103-110



# Liberty Movement 1

Page 26  
Counts: 28  
Measures: 111-117

All hold!



Director Viewpoint

Set #25 Counts: 28 Measures: 111-117