

# FWDP Newsletter



March 2014

## Fort Worth Decorative Painters is a Chapter of the Society of Decorative Painters

### 2014 President—Dusti Dancer



March! Can you believe it? This year is flying by and leaving me behind as usual. Our first two meetings have been a success and a lot of fun. LaRue, your snowman face is adorable and I can think of a number of things he will be cute painted on. Thank you for teaching him to us.

This month Beth will teach us some very happy flowers painted on solar screen. If you painted LaRue's snowmen on screen last year then you know how easy this screen is to paint on and there isn't any prep!!

We are working on our first Saturday class of the year. It will be on April 26th, 2014. Jan McCleery will be teaching a stroke work class. This will be a great class for beginners, intermediate, and advanced painters. Jan is full of information and a wonderful teacher, you don't want to miss this. More to come.....

Now, a very serious note, each of you need to think very hard and consider taking an office in 2015. Your entire board will be replaced next year. You read that correctly, every office needs a replacement. We have to have someone for each office. Think about it. PLEASE!

That being said....I look forward to seeing each of you at the April meeting,

Dusti  
817-696-9292



Meeting is March 17  
6:00 Social 6:30 Meeting  
**Happy St. Patrick's Day**



FWDP supports the Society of Decorative Painters. Dues are \$50/year. You must be a member of SDP to belong to FWP.  
Visit the website at: [www.decorativepainters.org](http://www.decorativepainters.org)

This is what we will be painting on at the March meeting. It is \$60 per roll.

There is information in the March Project writer-up about buying it from Beth.



### Art isn't limited to paint on canvas or wood. By Beth



We wanted a very specific cake for my sons recent wedding. The country club said they couldn't do it so I said, "why not!" I went down a day early and did my monochromatic mountain and pine tree "painting" using a palette knife (new) and piping tips (like Mar-got Clark) and "painted" his cake so it would be extra special for the happy couple. I sure wish ALL paint tasted this good! Beth

### PR—Suzane Godley

#### PR Request

Press Releases are sent each month to several small neighborhood newspapers. If your neighborhood has a newspaper that we could submit an article about the monthly decorative painting meetings, please send me the name of the newspaper and either a phone or email address to contact them.

Thank you! Suzane Godley

### Raffles—Armida Guzman

I thank you for those who brought items for the raffle in February, we made \$49. Those who have signed up to bring items for March raffle are follows: Jeanette Johnson, Connie Alexander, Marc Wrisley and Linda Chapman. Of course others who wish to bring something are always welcomed. Our goal is to make as much money as we can to add to our Ways and Means.

Thanks! Armida

### Items for Newsletter

Please send recipes for the newsletter, especially some of the delicious ones that are brought to the meetings. For example the two in this newsletter are from the February meeting. [ngenetti@tx.rr.com](mailto:ngenetti@tx.rr.com)

### Membership—Vera Hudnall

If you have not paid your 2014 dues they are past due. We now have 25 members.

Thanks , Vera

## March Project

### Spring is Busting Out All Over!

By Beth Stodieck

In March we will be painting a flowerpot full of fantasy flowers on heavy duty solar window screening. It is a fun surface to paint on and it goes very quickly. The paint stays wet longer than on wood so you have lots of time to blend your colors. Kind of like oil painting used to be. **WARNING:** You will be addicted.

If you want to buy a single piece of screen for this project, foil, instructions and picture from me, it will be **\$5, CASH ONLY**, small bills if possible.

If you want to buy your own screen, there is a picture of the label of the product I use in this newsletter. A full roll is \$60. If you are bringing your own surface and heavy duty foil, the instructions and picture will be \$1.

I'll bring an assortment of tied bows you can buy, if you'd like, for an additional \$2. If you want to bring your own ribbon, I'll help you tie the bows that night.

You will need to bring the following supplies: **Normal acrylic supplies plus**

**16 to 20"W X 24"H** firm, smooth surface backer board (if you have done watercolor with the chapter, the pink insulation foam board we used is perfect)

**Large sheet of butcher paper or tracing paper or parchment paper** the same size at your board.

**Masking tape**

**White chalk or chalk pencil or white Saral graphite**

(Saral is the easiest way to transfer. No light box needed)

**Scissors** – not your good sewing scissors!

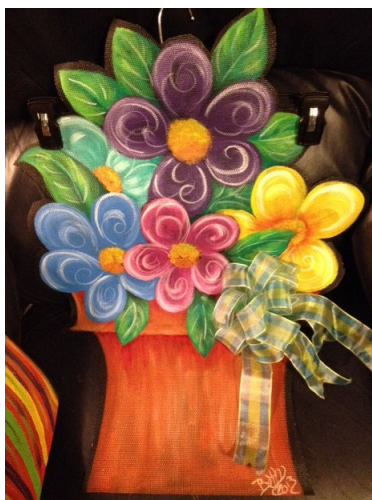
**Ribbon** to match your flower colors, about 3 yards (mine is 1 ½" wire edged)

#### **PAINT:**

- Burnt Umber                      \* White                      \* Buttermilk                      \* a country, rusty red
  - Dark and a light, bright green for leaves                      \* Bright Yellow
- 5 flower colors of your choice, both light and dark values

(I used yellow with a red, red violet with a pink, 2 blues, 2 purples and 2 turquoise)

**OR** pick your two values of your favorite color and do the whole bouquet in a single color.



## Hospitality—Juanita Munoz

A special Thank you to all who brought food in February.  
What a feast!!!We all enjoyed it!!!

As a reminder for the March Meeting the following people have volunteer to bring:

Main dishes:	Side Dish:	Sweets:	Drinks:
Juanita/Delfa- Nachos	Vera Hudnall	Beth	Juanita-unsweetened tea
Yvonne- chicken	Yvonne -Potato Salad	Armida	

This a great start and of course more is welcome, as we like to eat!

Thank you  
Juanita

## Recipe Corner 1

### King Ranch Chicken Casserole from Pam Martinez

1 large onion, chopped (I only use sweet onion - preferably 1015)  
1 large green bell pepper, chopped  
2 tablespoons of vegetable oil  
2 cups chopped chicken  
1 can cream of chicken soup (10-3/4 oz.)  
1 can cream of mushroom soup ( I always use cream of celery)  
1 can Rotel (10 oz. can)  
1 teasp. chili power  
1/4 teasp. salt  
1/4 teasp garlic powder  
1/4 teasp. pepper  
12 corn tortillas (6-inch)  
2 cups (8 oz.) shredded cheddar cheese, divided

#### PREP:

Sauté onion and bell pepper in hot oil in large skillet over medium heat for about 5 min.

Stir in chicken and next 7 ingredients. Remove from heat.

Tear/chop tortillas in one inch pieces. Use 1/3 to cover bottom of lightly greased 9 x 13 inch pan. (I used Pam Spray).

First layer: tortilla pieces (above), then chicken mixture and then 2/3 cup shredded cheese

Repeat layers: tortillas / chicken mixture / cheese two times.

ENJOY. Glad you liked it. Pam Martinez

Bake at 350 degrees for 30 or 35 minutes. (uncovered)

Top with 1/3 of chicken mixture and 2/3 cup of shredded cheese.

## Treasurer's Report- Sharlene King

Balances as of 2-25-14:

Checking	\$ 4,877.94
Savings	5, 207.00
Total	\$10,084.94

## Recipe Corner 2

### Ensalada Conchita from Connie Alexander

1-12 oz. can vacuum-packed corn with peppers

1-8 oz. can peas

1-8 oz. can green lima beans

1-8 oz. can cut green beans

1 cup celery

2 hard-cooked eggs, chopped

1/4 cu Mayonnaise or salad dressing

1/4 cup sour cream

1 teaspoon prepared mustard

1 teaspoon Worcestershire sauce

1/2 teaspoon onion salt

1/2 teaspoon curry powder

Dash of hot pepper sauce

Toss and chill. Stir off and on while chilling. Serves 10. I doubled it and we had enough for far more people than 20. Old recipe from a Better Homes and Garden Cookbook.

## Brush Caddies

Some of you may remember these brush caddies from years ago. This is a different company but are basically the same. (I have had several of these for about 35 years and they are still good even if paint spattered)

If we order 10 caddies, the chapter will receive one free.

“My Favorite Brush Caddy” is a unique container designed for artists. It is a convenient, compact way to protect and store your brushes and various art supplies. When the holder is removed from the case, the brushes and supplies form an arrangement for easy selection. The Brush Caddies are available in two sizes, the standard 10 inch, which retails for \$22.00 and the taller 14 inch for the longer brushes, which retails for \$25.00. The Caddies are made of clear plastic with royal blue lids and bases



## Memory Boxes—Jeanette Johnson

Keep painting memory boxes for area hospitals





## Minutes—February 17, 2014

The meeting was called to order at 6:40 pm by President Dusti Dancer. Following items were discussed:

**Announcements:** A company is selling brush caddies. If chapter sells 10 they will receive one free.

**Minutes:** Minutes approved as printed in newsletter.

**Programs:** Tonight we will be painting a snowman on pot lid with LaRue Hughes. March will be a floral basket on solar screen taught by Beth Stodieck. You will need a back board, butcher paper to cover and your paints. Details will be in newsletter. April is open. May – Roses with Juanita Munoz. June 28 - Summer Paint In. September – Make It and Take It. October – Smoked background with spider web with Beth. November – Upside down wine glass Santa candle holders with Dusti Dancer.

**Membership:** absent – Have 24 members for 2014. No visitors tonight.

**Treasurer's report:** Checking 5,480.44 Savings 5,207.00 Total 10,687.44

**Newsletter:** Next deadline is this weekend.

**Seminars:**

**Quarterly Saturday Paint-in:** The board presented an idea to the members about having quarterly paint-ins on Saturdays. Allowing those members who do not drive at night or that work a chance to come and paint with the chapter. We might even entice some members back that dropped the chapter because they couldn't drive at night. All the details have not been worked out yet, but save April 26 for the first one. Jan McCleery will come from San Angelo to teach a stroke work piece. Still looking for a location to have the classes. Cost will depend on the location, teacher, lunch, etc. Members were interested. Pattern and photo of Jan's piece will be in the newsletter.

**Christmas Party:**

**Hospitality:** Volunteers were thanked for the food & drinks brought tonight. A list was sent around to sign up for future meetings. Next month's volunteers will be in newsletter.

**Directory** –

**Memory Boxes** – Still ongoing – boxes going to Harris Southwest and Cooks.

**Monthly raffle:** Passed signup sheet around for future meetings

**Sunshine:** Bette Jo fell in rehab and is in hospital again. Shirley W fell.

Next board meeting will be announced.

Meeting Adjourned at 7:00 for painting with LaRue.

Respectfully submitted,

Nancy Genetti

Recording Secretary

## 2014 Board

**President – Dusti Dancer**  
**VP Programs—Beth Stodieck**  
**President Elect—**  
**VP Membership – Vera Hudnall**  
**Secretary– Nancy Genetti**  
**Treasurer – Sharlene King**

### Committees:

Annual Fund Raiser –  
 Christmas Party –  
 Historian –  
 Hospitality/Table Attendants – Juanita Munoz  
 Sunshine -  
 Library –  
 Memory Boxes (Service Project): Jeanette Johnson  
 Membership Directory – Carolyn Martchenko  
 Immediate Past President/Monthly Raffle – Armida Guzman  
 Newsletter—Nancy Genetti  
 Website – Suzane Godley  
 Parliamentarian/Bylaws – Nancy Genetti, Yvonne Lowrie  
 Publicity – Suzane Godley  
 State Fair – Carolyn Martchenko



2014 Officers

# Proposed 2014 Budget

## Fort Worth Decorative Painters 2014 Proposed Budget

We will vote to  
approve at next  
meeting.

	Proposed 2014 Budget	2013 Actual	2013 Budget
<b>Income</b>			
Christmas Party			
* Christmas Auction	500.00	795.00	400.00
* Dinner	200.00	240.00	200.00
* Raffle	200.00	215.00	300.00
Total Christmas Party	900.00	1,250.00	900.00
Membership Dues			
Current Yr. Membership	120.00	120.00	100.00
Next Year Membership	300.00	320.00	450.00
Total Membership Dues	420.00	440.00	550.00
Seminars			
2014	1,000.00		
* Sandi Stecker	0.00	1,340.00	950.00
Total Seminars	1,000.00	1,340.00	950.00
Ways and Means			
Monthly Raffle	400.00	429.00	500.00
Wood/Books/Cookbooks	100.00	76.80	100.00
* Annual Fund Raiser	0.00	0.00	0.00
Misc.	0.00	0.00	0.00
Total Ways and Means	500.00	505.80	600.00
Total Income	2,820.00	3,535.80	3,000.00
<b>Expense</b>			
Christmas Party Expense			
* Decorations, Raffle, misc.	200.00	0.00	200.00
* Dinner	250.00	292.28	200.00
Historian	50.00	0.00	50.00
Hospitality	40.00	0.00	40.00
Library	0.00	0.00	0.00
Membership	30.00	0.00	30.00
Newsletter	20.00	0.00	20.00
Directory Printing	50.00	0.00	50.00
Monthly Programs & Make it	150.00	134.92	200.00
Summer Paint In	200.00	90.00	300.00
Seminar Expense			
2014	2,300.00		
* Sandi Stecker	0.00	1,646.95	2,300.00
Sunshine	35.00	0.00	35.00
Ways and Means Expense			
* Annual Fund Raiser	0.00	0.00	0.00
Monthly Raffle Expense	25.00	0.00	25.00
Service Project			
Memory Boxes	100.00	0.00	100.00
Postage and Delivery	20.00	0.00	20.00
Administrative			
Web Site	100.00	607.02	175.00
Natl Annual Dues	40.00	38.10	35.00
President's Gift	100.00	100.00	100.00
Rent	875.00	875.00	875.00
Bank Charges	20.00	18.00	20.00
Insurance, Society	75.00	66.00	75.00
SDP Table Favors Contribution	0.00	15.00	100.00
Administrative - Other, Secretary, Treasurer	100.00	0.00	100.00
Total Administrative	1,310.00	1,719.12	1,480.00
Total Expense	4,780.00	3,883.27	5,050.00
Net Income	\$ (1,960.00)	\$ (347.47)	\$ (2,050.00)

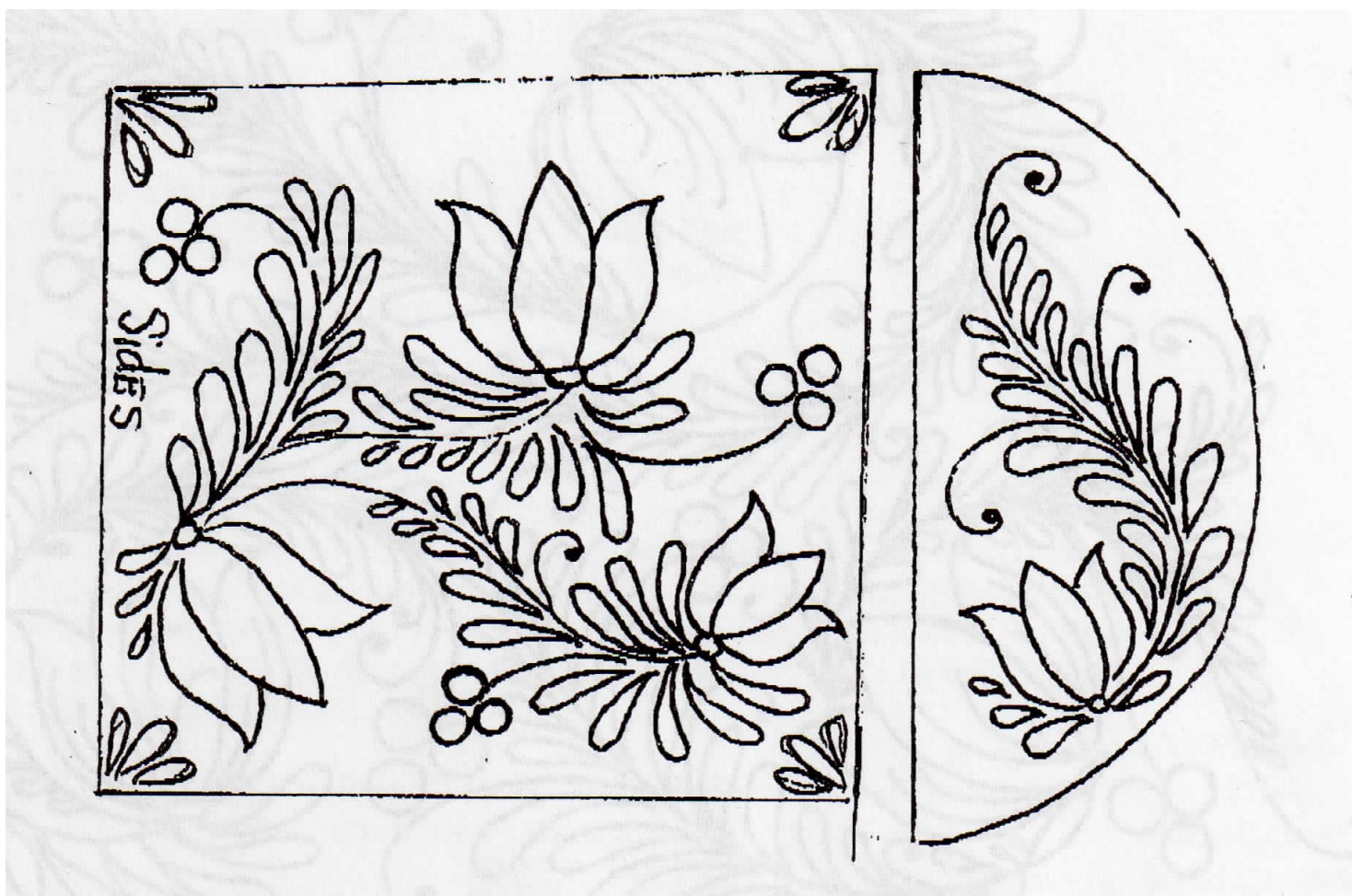
\* See Income & Expense Item

## Save the Date



We are working on our first Saturday class of the year. It will be on April 26th, 2014. Jan McCleery will be teaching a stroke work class. This will be a great class for beginners, intermediate, and advanced painters. Jan is full of information and a wonderful teacher, you don't want to miss this. More to come.....

Patters: Size to fit your piece  
Start finding your surface now!









## Prep Instructions for Stroke work piece taught by Jan McCleery

**Tulips and Strokes in Blue and Gold**  
**Tin Lunch Box**  
**By Marilyn Teegarden @2010**

**PALETTE: Jo Sonja's Artists' Colours**

French Blue

Provincial Beige

Smoked Pearl

Carbon Black

Paynes Grey

Red Earth

Raw Sienna

Warm White

Turners Yellow

Yellow Oxide

**Background Prep:** Give the entire surface one coat of All Purpose Sealer (Jo Sonja's). Inside and out. Let dry.

Base the trim work and the inside of the box with French Blue, including the small ring on the top of the box. The rest of the Box is based with Smoked Pearl, at least 2 coat of paint. Let dry. Sideload a large brush and shade the Smoked Pearl area with Provincial Beige. (This is all edges on the Smoked Pearl areas.) Let Dry. Shade again the outside edges with Raw Sienna. (You can use Retarder with both steps) The latch is Smoked Pearl with some Raw Sienna float on it. Dry well. Over night would be best. Apply pattern with light gray graphite.

## February Meeting





## February Meeting





## SDP Corner



Copyright © Shara Reiner CDA

# SAIL INTO CREATIVITY

**The 42<sup>nd</sup> SDP International Conference & Expo**  
**May 12-17, 2014**  
**Town and Country Resort ♦ San Diego, California**

## World Class Expo

Including exhibitors from all over the U.S.

## 6 Days of Painting Classes

Acrylic, Oil, Watercolor, Colored Pencil, and more!

## Special Events with

Jo Sonja Jansen MDA ■ Jamie Mills-Price & Kim Hogue CDA  
 Golda Rader ■ Shara Reiner CDA ■ Willow Wolfe

## PLUS

Chapters & Members Gathering, Annual Banquet,  
 & SDP Annual Meeting

## Conference Special

Available online November 15, 2013

at [DECORATIVEPAINTERS.ORG](http://DECORATIVEPAINTERS.ORG).

Purchase a printed copy online  
 or contact Shandi at (316) 269-9300 ext. 110,  
 email [SHANDI@DECORATIVEPAINTERS.ORG](mailto:SHANDI@DECORATIVEPAINTERS.ORG).

## Class and Event Registration

Opens December 3, 2013

## Make Your Town and Country Reservations

Call (800) 772-8527 (Mention SDP)

Or go to: [HTTPS://RESWEB.PASSKEY.COM/GO/SDP2014](https://resweb.passkey.com/go/sdp2014)

\$119 per night Single/Double

\$129 per night Triple

\$139 per night Quad

No resort fees ■ \$5 per day parking

## For More Information

Contact Becky Gray, Conference Director  
 (316) 269-9300, ext. 107,

or email her at [BECKY@DECORATIVEPAINTERS.ORG](mailto:BECKY@DECORATIVEPAINTERS.ORG).





# November 12th - 15th, 2014

*The most amazing art show to  
hit the East Coast in a decade!!*

World Class Teachers  
Outstanding Classes  
Vendors! Vendors! Vendors!

Seminars,  
Schedules  
and Special  
Events are  
in the Works!

Registration Opens  
March 10, 2014!!!

World of Color LLC  
P.O. Box 330  
Catharpin, VA 20143  
Phone (703) 754-3191  
Fax (888) 959-0721  
info@worldofcolorexpo.com  
http://worldofcolorexpo.com

# World of COLOR EXPO 2014

Easy in, Easy out  
with free shuttles  
to Dulles Airport



HILTON  
WASHINGTON DULLES AIRPORT  
13869 PARK CENTER ROAD  
HERNDON, VIRGINIA, 20171, USA

The Hilton Washington Dulles Airport hotel is  
conveniently located only three miles from the  
Washington Dulles (IAD) terminal and  
30 minutes from Washington DC.

FREE shuttles run on the 1/2 hour to  
Dulles International Airport!!

Show Rate Reservations Available after Nov 13, 2013

H A V E Y O U P R O M O T E D A R T T O D A Y ?



@WorldColorExpo



Search World of Color





We can report that, after a slow start, the online presentation of the Museum collection is moving forward quickly. We anticipate having the program up by March 1, 2014.

As with many of these types of projects, once we got into the project we found that we could do more than document the pieces, take photos, and present them to our online audience. The program gave us the opportunity to truly overhaul our documentation system, catalog the entire collection, inspect each art piece, and set up the Museum for future expansion.

Steve Gerig has been the SDP photographer for more than eighteen years. His work is seen in every issue of *The Decorative Painter* magazine. Steve graciously agreed to photograph the entire IMSDP collection. This was a bigger undertaking than initially believed.



The exercise was well worth the time and energy. In the process of preparing the art for photography, the staff discovered that some pieces were in need of cleaning and maintenance. It is very important to the SDP Foundation that all art is inspected and maintained properly.

Today, we have a complete high-quality, high-resolution photographic record of the collection. This will allow us to use the images online, in printed materials, and for publicity; it also provides an accurate record for historical and insurance purposes.



The IMSDP collection includes some 250 works of art. Through the cataloging process, we discovered that a new data collection system was needed. Our new system allows us to keep a thorough database of not only the art and the artists, but the history of how these pieces came to the collection. We are in the process of collecting artist statements on the works.

The work involved in making this an online presentation has made the Museum a stronger and more vibrant collection, but has delayed the online presentation. We plan to have the first pieces available online by March 1. We expect the entire collection to soon follow.

For more information, contact Jay Staten, publications director, at (316) 269-9300 ext. 112 or [jay@decorativepainters.org](mailto:jay@decorativepainters.org)

#### **FREE PATTERN TO MEMBERS**

If you go to the SDP website ([www.decorativepainters.org](http://www.decorativepainters.org)) you will be able to find a Shara Rheiner design for you to download.



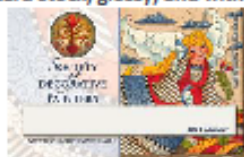
#### **DECORATIVE PAINTER**

You should have received your *Decorative Painter* Issue 1 by now. Bonnie Riley, from the Bluebonnet Chapter has a project in it. The magazine has been on line at the SDP Website since 2/7



#### **YOUR SDP MEMBERSHIP CARD**

We have discovered that our printer mistakenly used the wrong paper to print your 2014 SDP Membership Card. Please consider the one that came with your magazine as a "temporary" card only. The printer is in the process of reprinting and will be mailing your replacement card. The new card is everything that you have come to expect—card stock, glossy, and with a wonderful example of Erika Joanne's *On Healing Wings*





## Fort Worth Decorative Painters

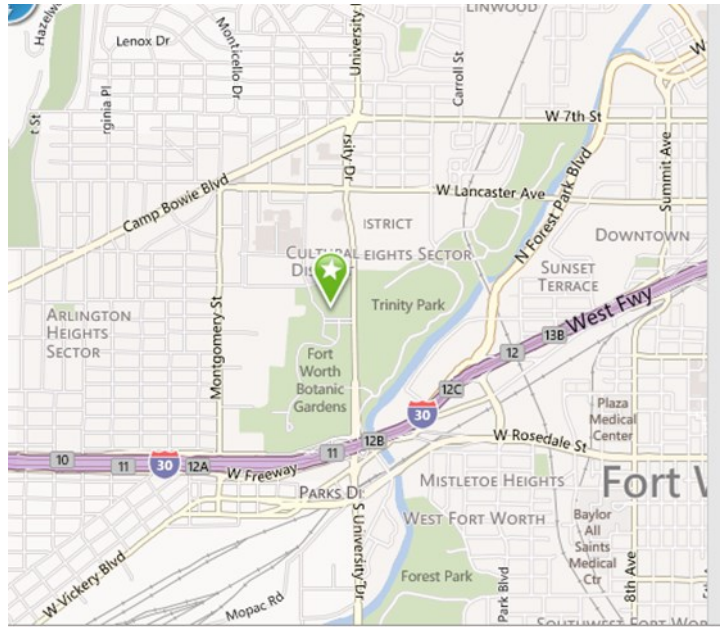
Nancy Genetti  
Newsletter Editor  
1117 Eton Drive  
Richardson, TX 75080

### Facebook:

Fort Worth Decorative Painters (FWDP)

[www.fwdecorativepainters.com](http://www.fwdecorativepainters.com)

  
Next Newsletter Deadline  
March 26, 2014



**FWDP Meets the Third Monday of February, March, April, May, September, October & November.**

**January Meeting 4th Monday and the Christmas Party 2nd Monday in December.**

**At the**

**Botanical Gardens  
3220 Botanic Garden Blvd.  
Fort Worth, TX 76107**

## 2013 Dates to Remember

### **January 27**—Chapter Meeting:

6:00 social time, 6:30 pm Business Meeting

Project: Silk Scarf with Markers, Armida Guzman

### **February 17**—Chapter Meeting

6:00 Social time, 6:30 business meeting

Project: Snowman on Pot Lid, LaRue Hughes

### **March 17**—Chapter Meeting

6:00 social time, 6:30 pm Business Meeting

Project: Flower basket on solar screen

### **April 26**—Saturday Paint-in

Stroke work piece by Jan McClerry

Time and Place to be announced

### **June 28**—Summer Paint Party