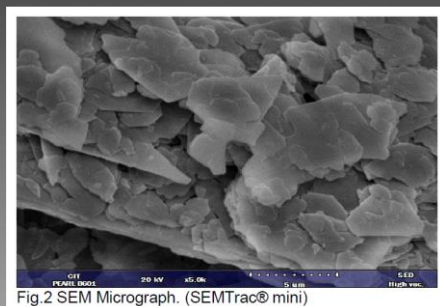


ARG-BiOCl CL-601 is a soft lustrous powder providing a pearl-like, nacreous effect. In cosmetic applications, ARG-BiOCl CL-601 offers unsurpassable smoothness, excellent adhesion and covering power with exceptional compressibility and binding characteristics.



### PROPERTIES

INCI	Bismuth Oxychloride (CI 77163)
CAS	7787-59-9
EINECS	232-122-7
REACH Registration	01-2120757180-60-0003
Appearance	White powder
Assay as BiOCl	99.5% min.
Loss on drying	0.5% max.
Arsenic	1 ppm max.
Lead	5 ppm max.
Mercury	1 ppm max.
Particle size (D50)	8 – 13 µm
Bulk density	1 – 1.5
pH	5 – 8

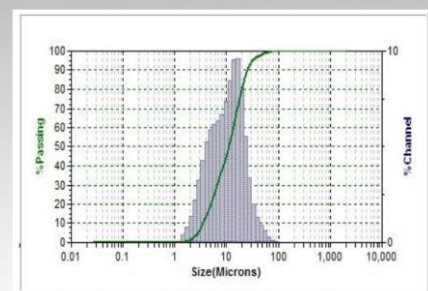


Fig.1 Particle size distribution histogram volume. Laser Diffraction Analysis (MicroTrac® s3500)

### FORMULATION

Ideal for pressed powders, lipsticks, eyeshadows, pencils, and more.

#### Typical Use Levels:

- Makeup: 5-10%
- Eye shadows: 10-25%
- Creams: 5-10%

The information provided is to our best present knowledge correct and complete and is given in good faith but without warranty. It remains the user's own responsibility to make sure that the information is appropriate and complete for his special use of this product.

July 11, 2019