



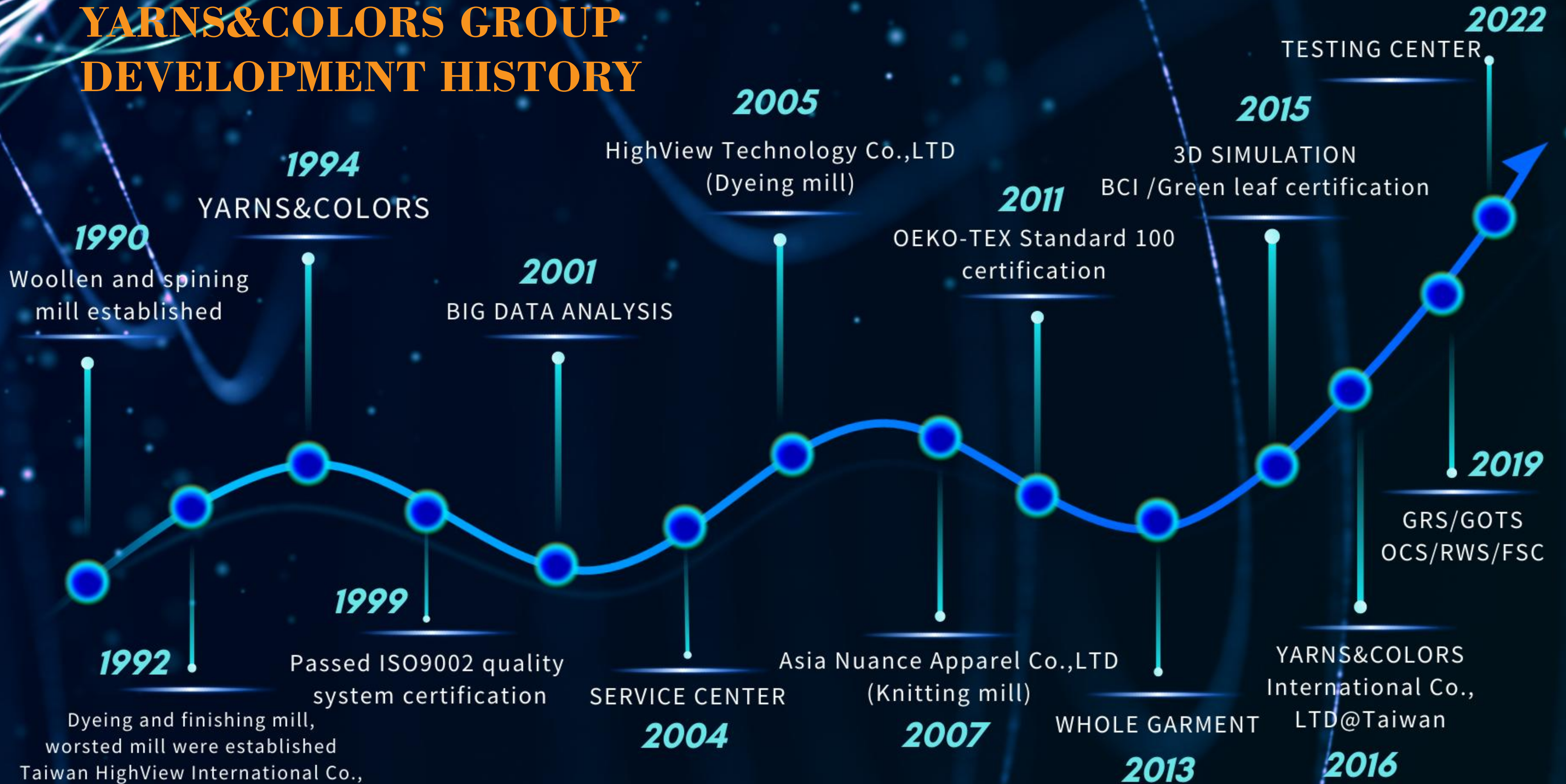
*META 28*  
**YARNS & COLORS**  
**GROUP**

**YARNS & COLORS**

PROFILE OF  
YARNS & COLORS GROUP



# YARNS&COLORS GROUP DEVELOPMENT HISTORY



# Y&C GROUP SYSTEMATIC MANAGEMENT

DESIGN &  
DEVELOPMENT

IN HOUSE  
TESTING CENTER

SUSTAINABILITY

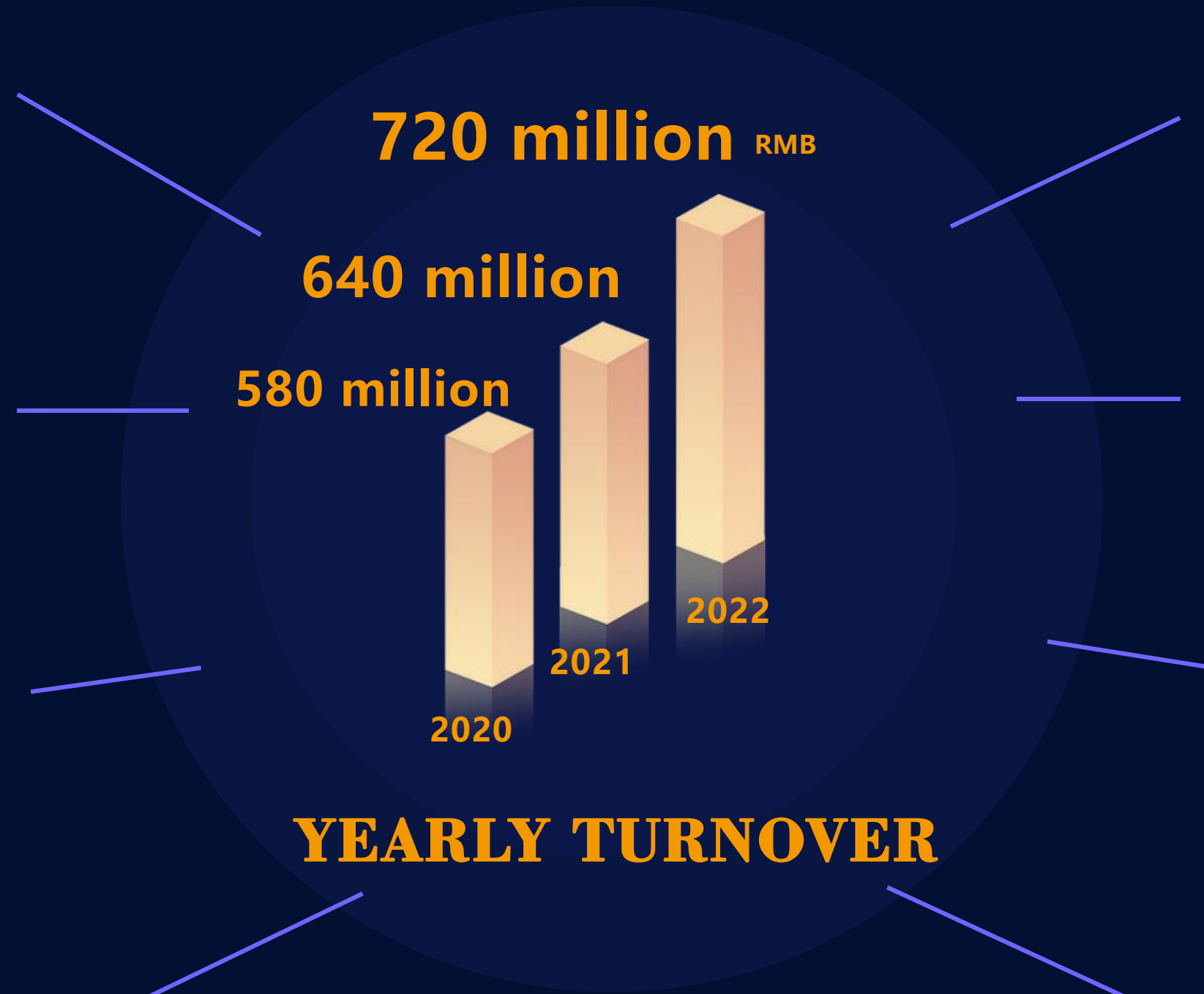
META  
3D SIMULATION

ERP/BI/APP

ONLINE  
PLATFORM

VERTICAL  
SUPPLY CHAIN

GLOBAL NETWORK  
SERVICES



YEARLY TURNOVER

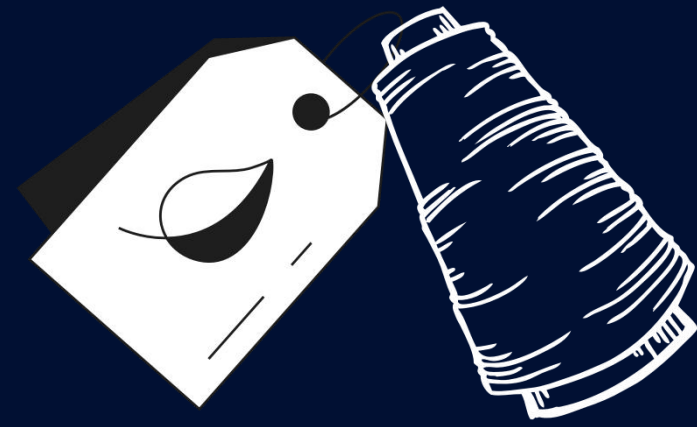


# YEARLY YIELD OF YARN





# Spinning A Better Future

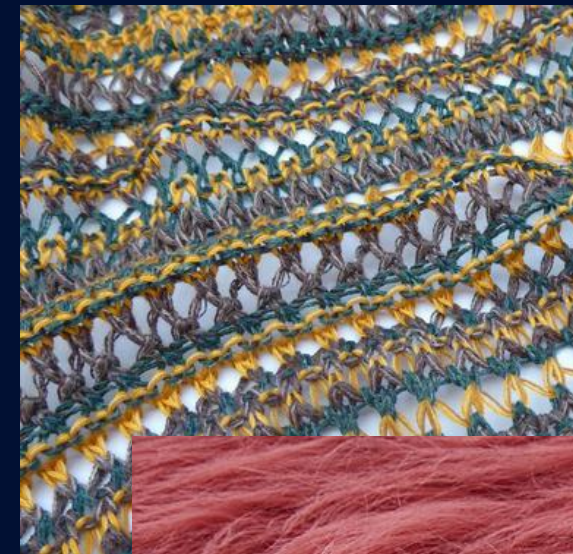


## R&D

- TREND DEVELOPMENT
- CUSTOMISED DEVELOPMENT

These raw materials are then blended together with special dyeing technology to create an array of over **1,000 unique** types of yarn such as **worsted, woollen, and fancy**, so that we are able to satisfy the **customers'** various requests.

Our company combines the whole spinning and dyeing process by using different machinery. Through the global sales network, we integrated raw material supply chain that will provide the latest **trend** in our products, new resources, and solutions.







# DYEING FACTORY

## YEARLY YIELD:

4500 tons

5600 tons

7000 tons

DATA COLOR

LA-SPC

## EQUIPMENT

Fully automated dyeing equipment with Hank Yarn Jet Dyeing Machine are from minimum of 5KG to maximum of 1,000KG. Cabinet Dyeing Machines are from minimum of 5KG to maximum of 1,000KG. HighView Technology is an environmentally-friendly protection dyeing factory with a series of complete soft water treatment systems that consistently adhere to the concept of green environmental protection. This technology has been ahead in the industry for several years and has created a brand trust and reliable corporate partner.



# KNITTING MANUFACTURER

## GARMENT

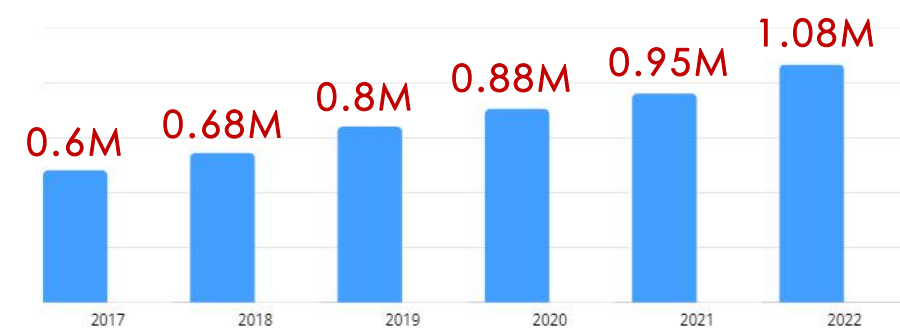
- NORMAL KNITTING
- WHOLEGARMENT
- INLAY SP SYSTEM



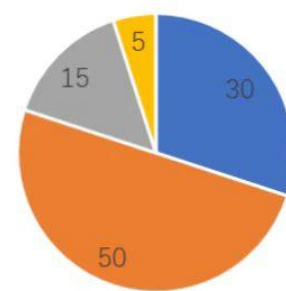
### Factory Performance

CAPACITY: 1.5M/YEAR

Production Volume (pcs)



PRODUCT TYPE(%)



■ MEN'S WEAR ■ WOMEN'S WEAR  
■ KID'S WEAR ■ ACCESSORIES





# PROFESSIONAL TEST CENTRE



**Thermostatic Lab**



**Routine Lab**



**Flat Machine Lab**



**2023: CMA**



**2024: CNAS**





3D SIMULATION

# META28

DESIGN&DEVELOPMENT CENTER

META28 PROVIDES  
A DESIGN PROPOSAL  
PLATFORM,  
DESIGN PROGRAMMING,  
3D DESIGN SIMULATION,  
PROOFING,  
PRODUCTION AND SALES.



META28





# META28 SERVICE CHANNEL

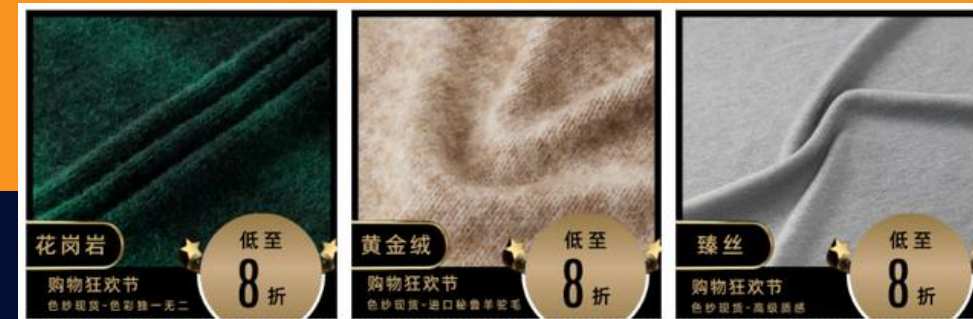
## PDF PRODUCT PROFILE

Company whole department product introduction



## ONLINE PLATFORM

Discount season  
Yarn/Sample/Hangtag



## 3D EXHIBITION HALL

Electronic  
version/stitches/sample/  
3D modeling



## EXHIBITION

SPINEXPO/ISPO/  
PITTI BAGLIONI/  
LA YARN SHOW/FS



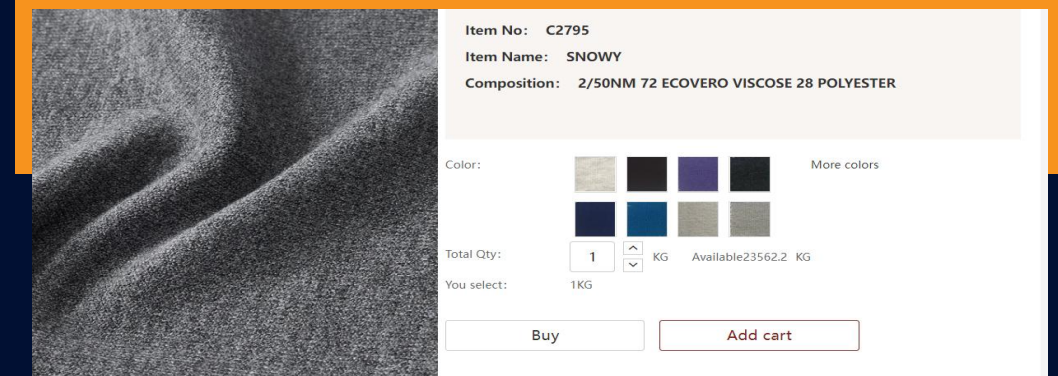
## WECHAT

Professional tweet sharing  
Video number/Moments  
advertising campaign



## STOCK SERVICE

Stock service can provides  
quickly response tools for  
knitters sampling





# Online platform – stock service and fast lead time

## The minimum 1KG for Stock

Better understanding of customers

## Low-carbon mode

Simplify the processes



## Digital marketing

Precise product recommendation  
Profile/pattern/sample

## Stock Service

Intelligent inventory management



# YARNS & COLORS INTERNATIONAL CO.,LTD

Founded in 2015, Yarns & Colors was the first knitting design center in Taiwan's precision textile industry that uses Japanese SHIMA SEIKI 3D automation control and automatic precision woven knitting.



## Annual Yield

300,000  
PCS/YEAR

## Service

KNITTING DESIGN  
SOLUTION



## 3DKnit

AI Production  
Accelerated Delivery Period  
Minimal use of raw materials  
Recyclable  
seamless knitwear  
Reducing carbon dioxide  
emissions  
Waste-free 3D KNIT Production  
Aquatic Production

## Sustainable development



SKETCH DESIGN  
KNITTING PROGRAM  
STYLE 3D SIMULATION  
SAMPLING  
PRODUCTION  
INSPECTION  
SALES CHANNEL

## Talent cultivation center

We aim to train Taiwan's talented design and programming creatives with the latest in international expertise and become a bridge for the international fashion arena.



Knitting a Better Future.





# SUSTAINABILITY-CERTIFICATES



**CLIMATE ACTION**

**CARBON NEUTRAL**



**CNTAC-LCA ClearStream**

By Ø ZDHC

**Ø ZDHC**



**GREEN RAW MATERIALS**

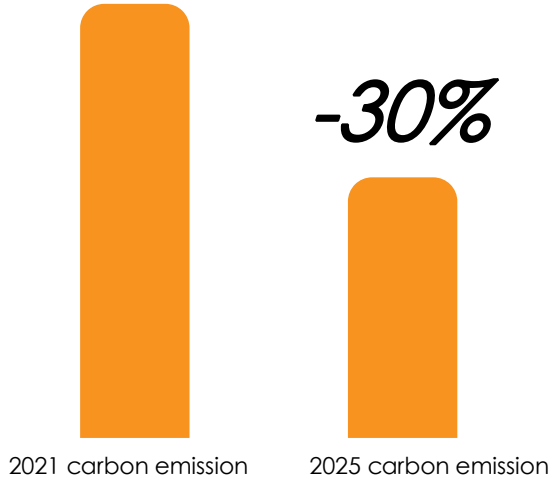
**LIFE ON LAND**





# SUSTAINABILITY-CARBON NEUTRAL

## Goal 1

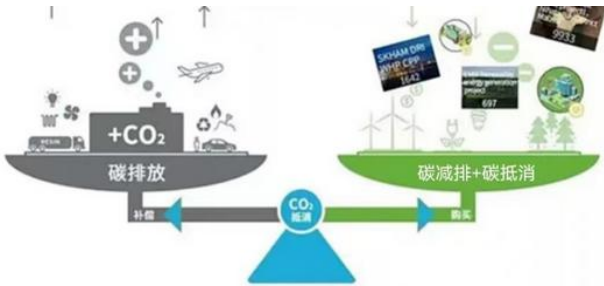


To reduce company CO2 emissions by 30% by 2025 compared to 2021



## Goal 2

To truly achieve carbon neutrality by 2050



1CO2=1 ton of CO2 emission reduction



## Goal 3

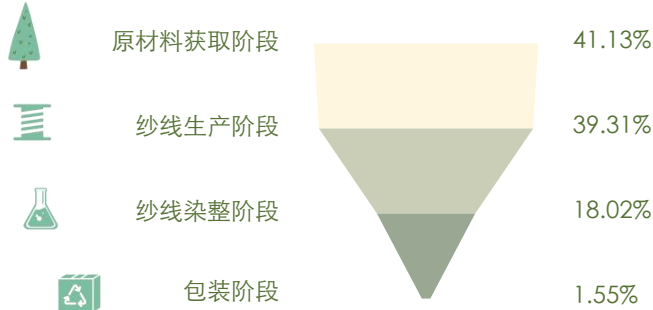
Carbon f of snowy and Athena products + LCA life cycle assessment to finally achieve net zero emissions



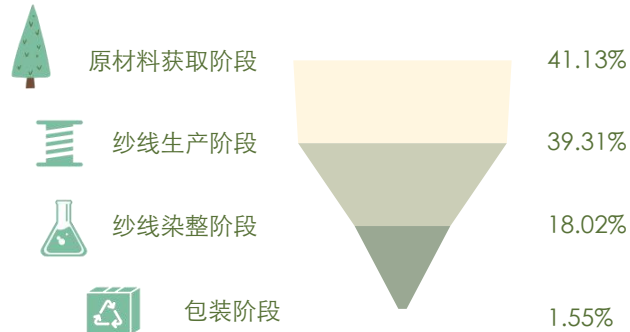
- Carbon emissions,
- Product hazards,
- At the same time, have a positive impact on society



### LCAPLUS Footprint For SNOWY®



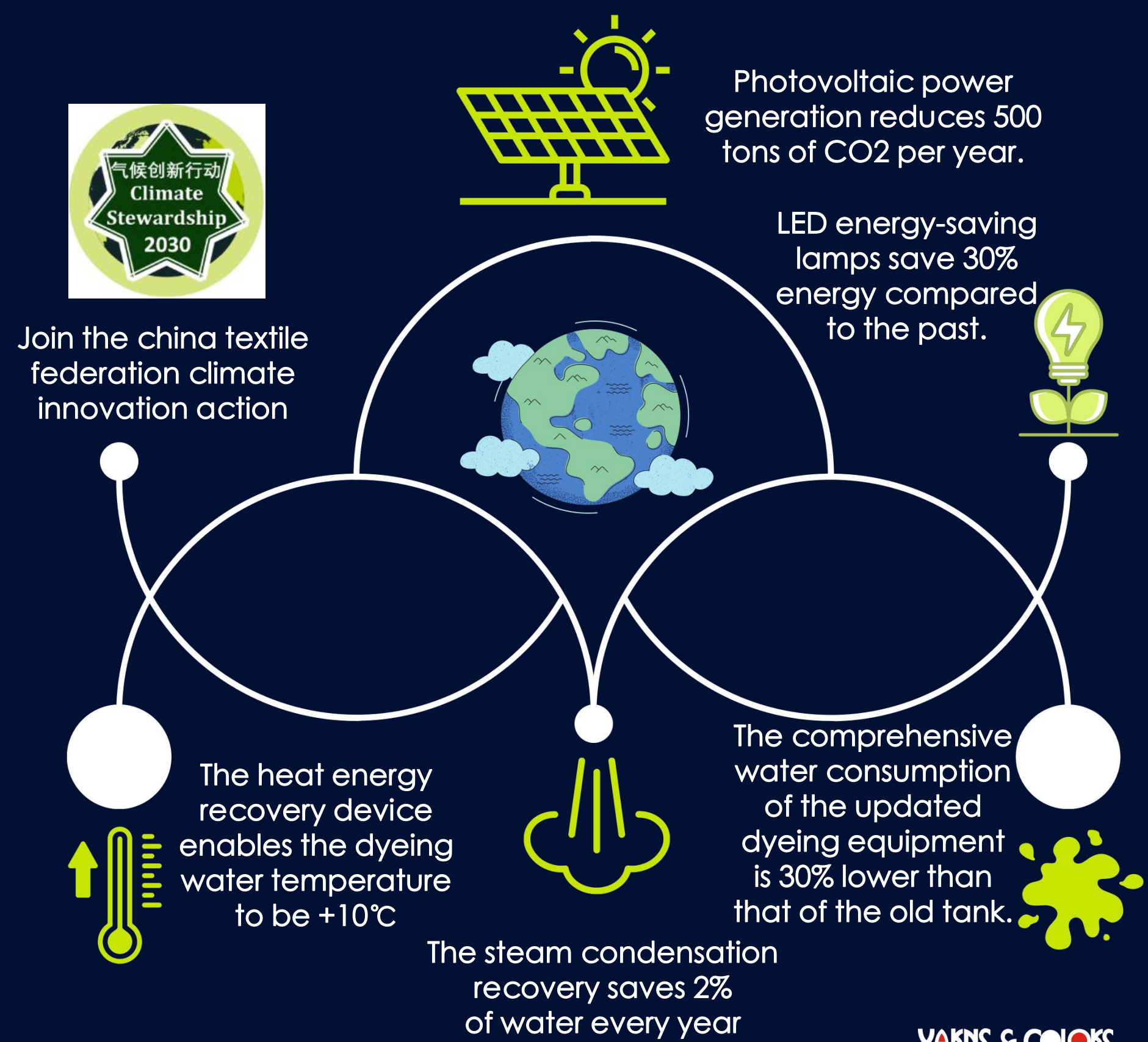
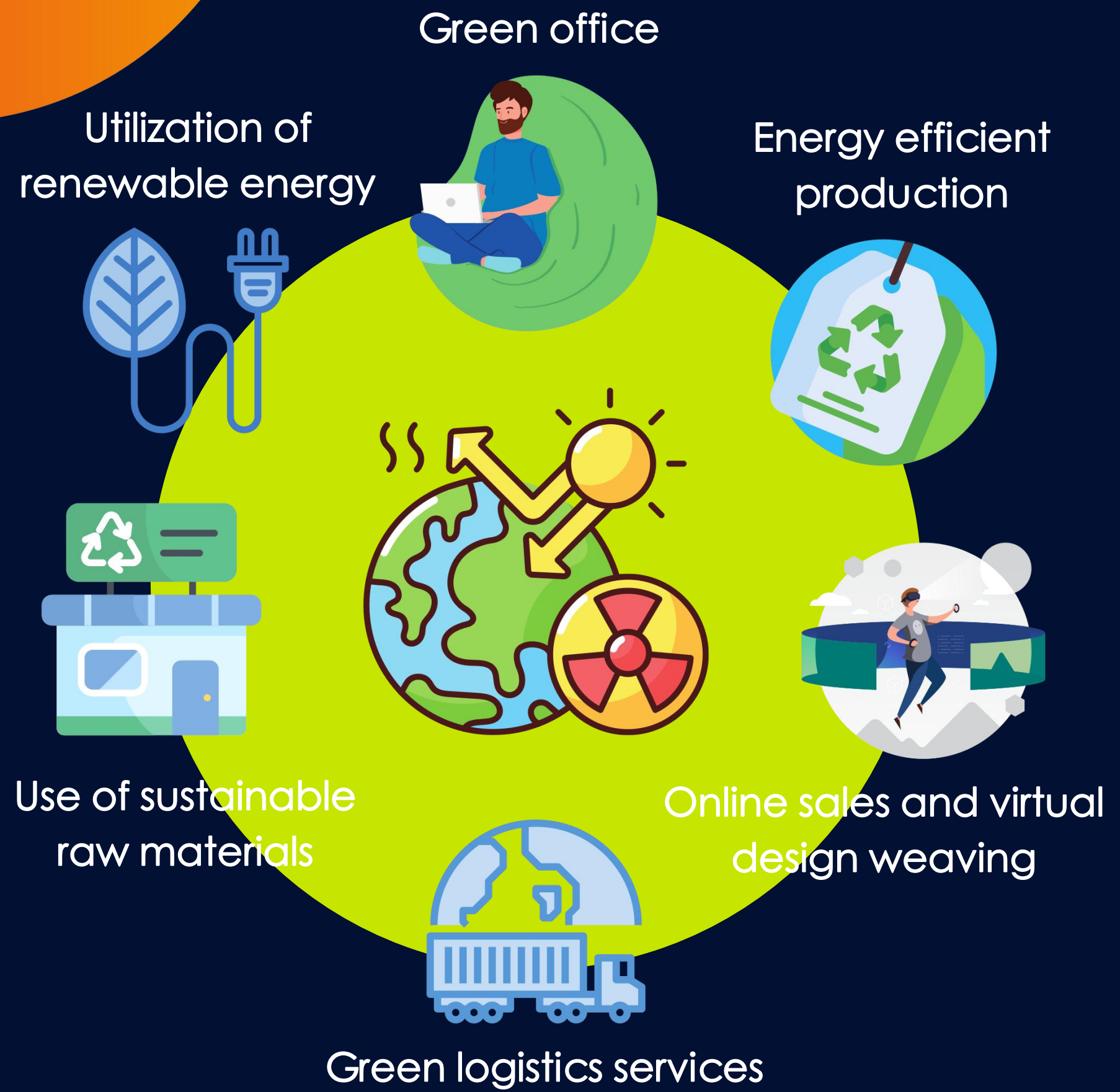
### LCAPLUS Footprint For ATHENA



数据计算: CNTAC-LCA工作组LCAPLUS系统  
核算边界:  
系统边界: 摇篮到大门 (Cradle to Gate)  
实测边界: PBT聚酯切片生产到纱线成品



# Carbon emission reduction measures to help the planet



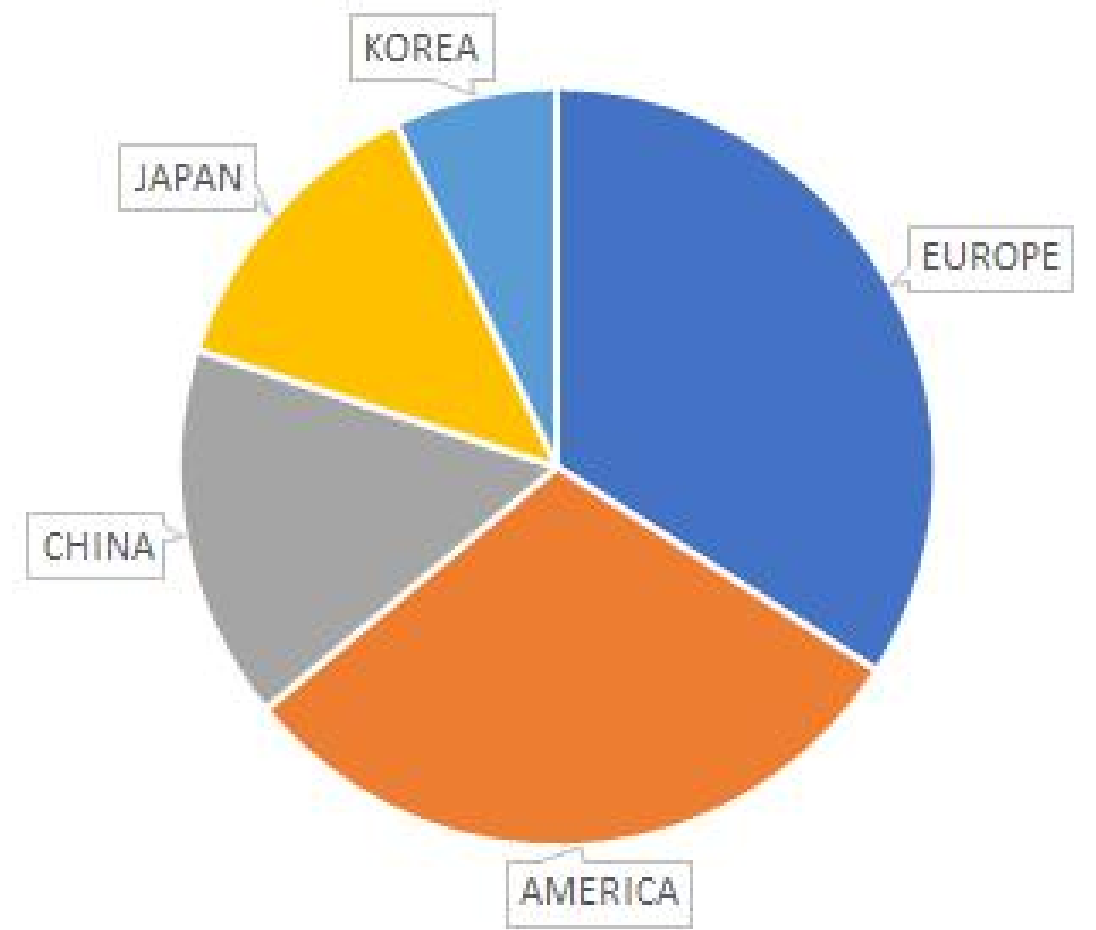


# GLOBAL NETWORK



- AGENTS**
- USA/New York
  - JAPAN/Tokyo
  - UNITED KINGDOM/Wymeswold
  - GERMANY/Kaufering
  - FRANCE/Maroq en
  - RUSSIA/Moscow
  - SPAIN/Barcellona
  - TURKEY/Istanbul
  - PORTUGAL/Povoa Do Varzim
  - KOREA/Seoul
  - BANGLADESH/Dhaka

- OFFICES/FACTORIES**
- HQ CHINA/Suzhou
  - CHINA TAIWAN/Taipei
  - ITALY/Biella
  - JAPAN/Tokyo



MARKET SHARE OF DIFFERENT AREA



# YARNS&COLORS S.R.L @ITALY

## SALES NETWORK

Establish a sales network and customer service network in the Western Hemisphere.

Agent network:  
Germany/Spain/Belgium/Britain/France/New York/Russia/Turkey/Portugal and other countries.

International production network:  
Bangladesh/Cambodia/Vietnam/Myanmar/Thailand and other countries.



## MARKET TREND

Collect, analysis, and mastering market trend  
MILAN SHOWROOM  
R&D design support

# ITALY BIELLA





YARNS & COLORS

YARNS & COLORS  
THANKS !



ONLINE



WECHAT

CONTACT

E-mail: [sales@yarnscolors.com](mailto:sales@yarnscolors.com)

CHINA TEL: +8-51266291126

TAIWAN TEL: +886-2-26973963

ITALY TEL: +39-0158494380