

ITEM5

Kirkpatrick and the Masonic & Odd Fellow Lodge of Anna

Cornwall Kirkpatrick was a charter member of the Masonic and Odd Fellow Lodge of Anna: Secretary of Lodge, #520; A. F. and A. M. Secretary of Encampment #291, I.O.O.F.; Treasure and Conductor of Anna Hiawatha Lodge #291. I.O.O.F.; Secretary of Board of Trustees of Southern Illinois Hospital for the Insane; Director of Southern Illinois Fair Association; Chairman of Committee on Chartered Lodges in Masonic Grand Lodge of Illinois; and King of Egyptian Chapter #45, R.A.M. (Perrin, "History of Alexander. Union, and Pulaski Counties, Illinois," 1883); and (Hoffman, "History of LaSalle County," 1888).

Many of the ceramic folk art and handcrafted creations of the Kirkpatrick potters of Anna, Union County, Illinois, were inspired by local and national historic, religious, and political topics of the day. Now, it well known that the founding fathers of the American Constitution were almost all Freemasons. Though Freemasonry and the Independent Order of Odd Fellows are distinct separate entities, much is shared and common. Fundamentally, Freemasons strive for "good men to get better," and the Odd Fellows desire to offer "help to those in need."

American scholar David Ovason gives the significance of the year 1881 to esoteric thinkers during the 19th Century in America. He imparts "Esotericists (as were many in the United States at that time) knew that 1881 was the year which the great 15th -century abbot and occultists, Trimethius von Nettesheim, had predicted would mark a fundamental turning point in history." (*The Secret Zodiacs of Washington D.C.*; by D. Ovason). The esoteric writer Ovason also provides ample evidence that Freemasons placed their symbols around many communities and very prominently around the capital city of the America.

The Rosicrucian, Thomas Henry Burgoyne, one of the learned and perplexing esoteric writers working in 19th century America, had already commented on the mysterious hypothetical planet, and he promised that "In the year 1881, the "Dark Satellite, in its malevolent influence, passed its darkest culminating point." Partly borrowing his ideas from the Roman poet Virgil, Burgoyne's interpretation of the movement and Ages of the Dark Star is based upon his own interpretation of ancient symbolism that he would have been party to, as a Rosicrucian. Burgoyne also claimed to be a Mason.

Ovason concluded "It is difficult to know what to make of Burgoyne: it is quite possible that his contribution to American arcane thought is only just beginning to be fully realized by scholars, Burgoyne's writings about 'the magnetic sphere of our planet which exactly corresponds to the animal soul of man' are the equivalent of what in occultism is termed the Eighth Sphere - until that time a closely guarded secret in the confines of the Secret Schools." Burgoyne's prediction that a tenth planet would shortly be located has rightly been taken as some as a reference to Pluto (planet # 9), and also had much to say about reincarnation. The vital connection with 1881 that correlates with the theory developed by scholar David Ovason that suggests the Dark Satellite is simply yet another re-interpretation of the ancient knowledge of the Dark Star, a Second Moon that is small and black.

Despite that many think that Nibiru is about to make an appearance, Ovason concurs with the original timeline introduced by Zecharia Sitchin about its appearance at the beginning of the Hebrew count of years, being coincident with the Nippurian Calendar in 3760BC: “Not only the presence of the Nefilim but also the periodic arrivals of the Twelfth Planet in Earth’s vicinity seem to lie behind the three crucial phases of Man’s post-Diluvial civilization: agriculture, circa 11,000 B.C., the Neolithic culture, circa 7500 B.C., and the sudden civilization of 3800 B.C. took place at intervals of 3,600 years.” An important sub note worthmaking is the known assumption that the Jewish count of years of 5,748 in 1988, is from the “beginning of the world.” This is actually from the beginning of the Nippurian calendar in 3760 B.C., the time of Anu’s visit to Earth. Ovason extends this idea to propose that the last Nibiruan passage marked the beginning of our current era, and that the appearance of the Messianic Star was actually the “dark star” Nibiru moving through the planetary zone. As such, our calendars have begun with Nibiruan appearances, each time marking the start of a new Nibiruan Age.

Thus, it’s important to review the simple math: half of 3760 is 1880; $1880 + 1 = 1881$the half way mark,... or farthest distance away for the Dark Star. This point in time for the small dark planet (or second small dark moon) marks 1881 a paramount year in time for Masonic members and the Odd Fellow Lodge of Anna.



3 Gallon Churn by the Anna Pottery, featuring Masonic “X” Symbol and the important “1881” date. Vessel attributed to Cornwall Kirkpatrick

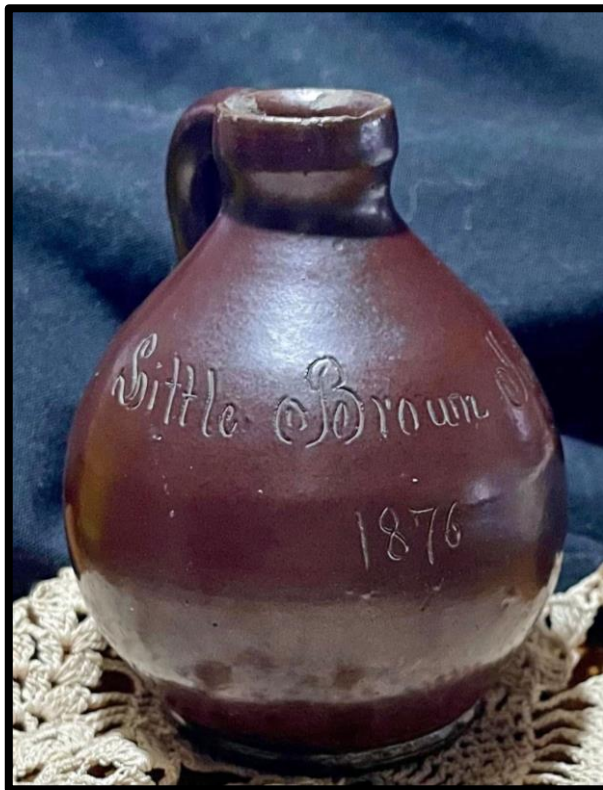
The Stairway to Heaven sought by the Freemason appears to ascend to a seven-pointed star in the East. The seven stars that are becoming remarkably familiar appear to be offset, grouped with Luna. This may be because of their ancient connection with the upturned crescent, but they nevertheless make

their presence felt even here, in the standard symbolism of Freemasonry. Thus, this 'turning point' in 1881 represents exactly half a Nibiruan Age. Half of 3760 is 1880, and if you take into account the lack of 'year zero' in the Christian Calendar, we have 1881AD. For freemasons and Rosicrucian Burgoyne, the year 1881 marks Nibiru's, the Dark Satellite's, the Dark Star's, the small Dark Second Moon's furthest distance from the Sun. In 1881 it's at its "darkest culminating point."



Noted within the Masonic Pigpen Cipher, the symbol "X" equates to "marks the exact spot." In conclusion, the year 1881 was expected to commence its long return voyage to the planetary zone. Furthermore, the Kirkpatrick cobalt decoration "1881," "1881 above X" and "1881 above X (with dots)" signifies the very important date in time. 1881 signifies the exact point in time the Dark Star commences its return back. 1881 is a turning point in history. 1881 begins a brighter future for man.

Cornwall Kirkpatrick and other Masonic and Odd Fellows Lodge members, and Freemasons, hoped 1881 would move forward a better world. Cornwall never aspired to a given area of politics that might interfere with his business, yet he was quite involved in the Anna community. He was the first mayor of Anna, Illinois, and was elected seven times to this office. His family attended the Baptist Church. He was a Whig and later a Republican. While in Covington, Kentucky, he lost by one vote to a preacher for a committee portion of Counselor. Cornwall was first Mayor of Anna



1 pt Bulbous Albany slip Centennial Year "1876 Little Brown Jug"
w / base inscription in Masonic Pigpen Cipher (reads in mirror) "Anna Pottery"



Earthenware Anna Pottery inkwell bearing detailed etching of The Anna Pottery. In the foreground of this accurate depiction of the Anna Pottery building appears a well dressed man, Mayor Kirkpatrick, in top hat pumping water from famous city well at his pottery At the 1 o'clock edge position appears a shooting bright star or sun, possibly the "Dark Star."



Inkwell features numerous incised geometric figures, possibly in Masonic pigpen cipher with symbolic symbol 3-D geometric posts that support the inkwell top to its base (see arrows on previous page). The incised shooting star (white arrow above), possibly signifies the aforementioned “Dark Star,” of 1881.