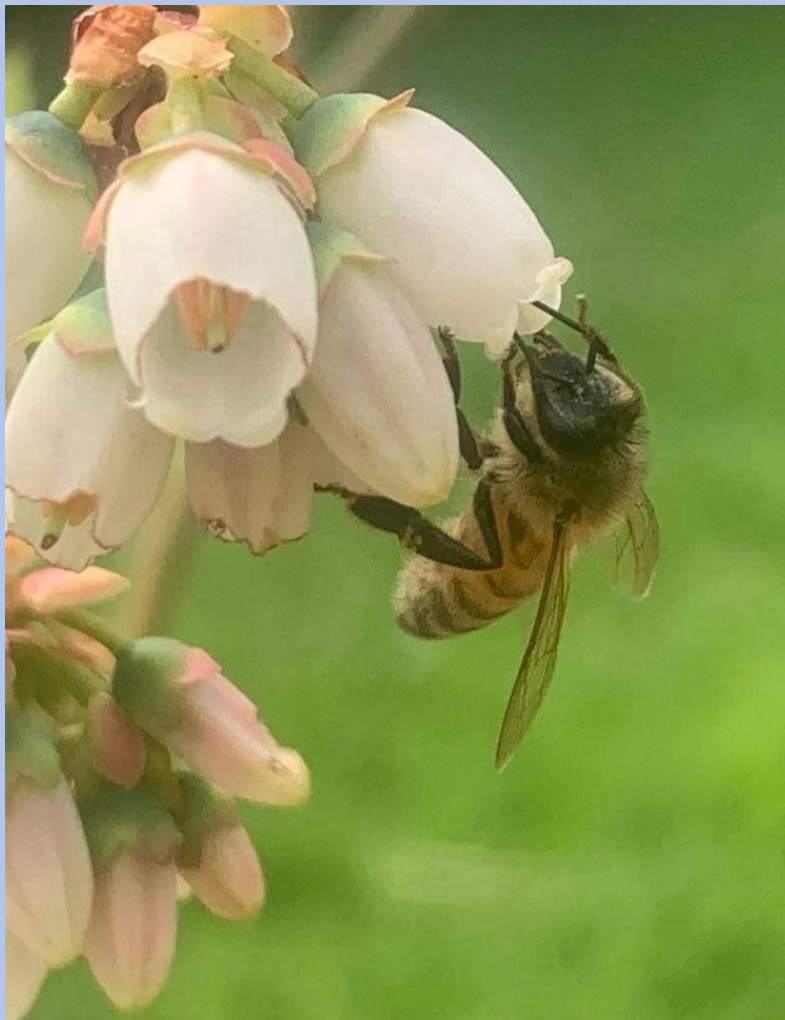




May 5 – Dogwood, Prairie Village, KS – J. Henry



May 6 – Blueberry, Meriden, KS – B. Tipton





May 7 – Tulip Poplar, Paola, KS – R. Burns

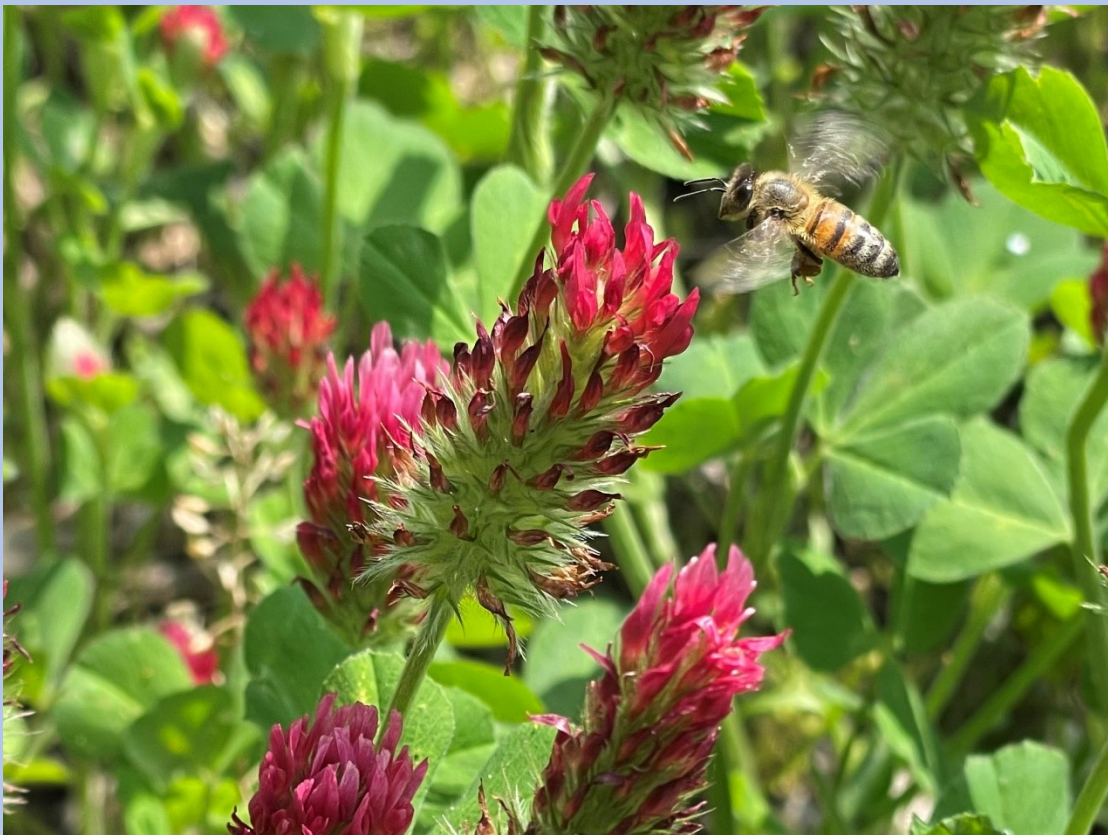


May 11 – Dutch Clover, Prairie Village, KS – R. Burns





May 11 – Shade Master Honey Locust, Berryton, KS – C. Burkhead



May 12- Crimson Clover, Berryton, KS – C. Burkhead





May 16 Meadow Sage Salvia 'Snow Hill', Berryton, KS – C. Burkhead



May 17 Catmint, Auburn, KS – S. Lane



May 22 – African Blue Basil, Berryton, KS – C. Burkhead



May 22 – Chives, Auburn, KS – S. Lane





May 22 – Pincushion plant, Berryton, KS – C. Burkhead



May 23 – Spiderwort, Auburn, KS – S. Lane



May 24 – *Salvia sylvestris* 'May Night', Berryton, KS – C. Burkhead



May 25 – Sweetspire, Merriam, KS – J. Henry





May 28 – Blackberry, Auburn, KS – S. Lane



May 29 – Purple Leaf Japanese Honeysuckle, Auburn, KS – S. Lane





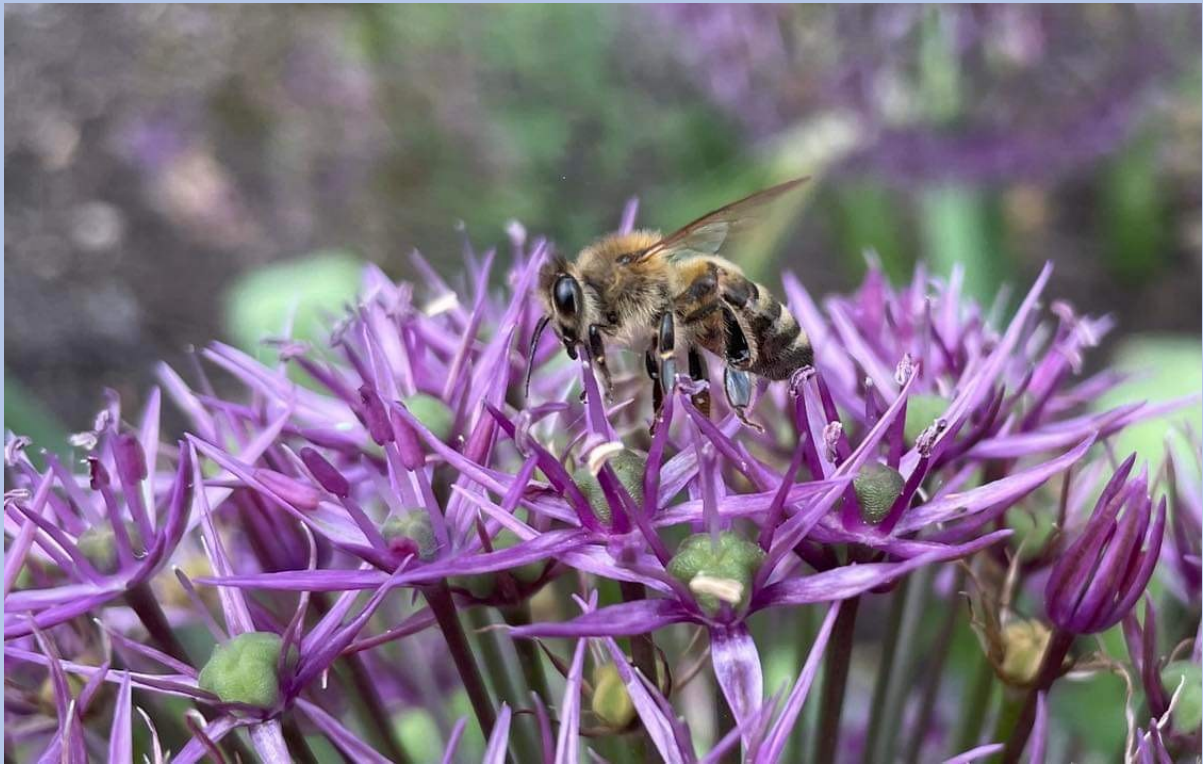
May 29 Persimmon, Auburn, KS – S. Lane



May 30 – Sweetspire, Olathe, KS – K. Sanderson



May 31 – Linden, Olathe, KS – J. Patrick



June 1 – Allium, Leawood, KS – M. Harmon





June 1 – Culinary Sage, Leawood, KS – M. Harmon



June 6 – Mustard, KCMO – J. Henry