

# Roving ChessNuts CHESS Teasers



NEWS, RESULTS, UPCOMING EVENTS, PHOTOS AND INTERESTING STUFF  
MAINLY ABOUT SCHOLASTIC CHESS IN EDMONTON & CHESSNUTS ACTIVITIES



Volume 10, Issue 13 • February 12, 2018



File photo of three contestants in a Girls-Only Tournament held in 2016 by Roving Chessnuts.

**Details about a Girls Only Workshop featuring Alberta's highest-rated female player are on back page!**

## While boys hold majority in competitive events growing numbers of girls are learning chess

Throughout North America, and like-ly in many countries around the world, more children are learning and playing chess, often at younger ages.

The Roving ChessNuts have experi-enced this growth in chess, and in recent years, most school programs, out-of-school classes and chess camps are attracting a higher percentage of female students. In a few classes, girls make up 40% or more of the class registration.

Competitions, however, still are dom-

inated by male entries and often the higher levels of youth play feature all boys with only the occasional young fe-male sitting in the sections of higher play.

Whether it is male or female stu-dents, the Roving ChessNuts operates on the principle that the skill level reached is determined by the enthusiasm and effort a student and competitive player is willing to commit to chess. We salute any child that wants to benefit from learning and playing the respected game of chess!



## DGT1001 Chess Clock

**\$41.95<sup>+GST</sup>** Used at Edmonton tournaments  
Scholastic Tournaments • Practice with a clock - time  
your checkmating abilities and speed up play at  
home with slower-thinking opponents!

Clocks make for fairer games!

## Roving ChessNuts

12015 76 Street, Edmonton • 780-474-2318

rovingchessnuts@shaw.ca

**Orders can be placed by e-mail or phone;  
delivered to students in school programs or classes**

## Teachers Convention Chess Camps

**at the Roving ChessNuts** 12019 76 Street, Edmonton

**Full Day** (8:30 to 5 p.m.) **Half Day** (8:30 to 12:30 or 1 to 5 p.m.)

**Thursday & Friday, March 1 and 2, 2018**

**(Limited enrollment of 12 students, priority to full-day and those entered in Chess Faceoff at Rogers Place on March 11)**

**(Full-Day players bring a bag lunch; a.m./p.m. healthy snacks provided to morning and afternoon)**

**Special workshops on Friday conducted by **Agnieszka Matras-Clement****

**Alberta's Highest Rated Female Player • Third in 2017/18 Canadian Women's Championship**

**Full Day: \$49 plus GST Two Full Days \$90 plus GST**

**Half-Day: \$29 plus GST Two Half Days: \$52 plus GST**

Payment can be made by cheque, credit card, debit card or cash and must be arranged at time of enrollment. Refund, minus \$15 administrative fee can be requested for cancellations received one week prior to start of camp. In case of illness or other reasonable absence, credit can be extended to other camp dates or other Roving ChessNuts programs and classes.

E-mail [rovingchessnuts@shaw.ca](mailto:rovingchessnuts@shaw.ca) or call **780-474-2318** to register for camps, specify date and times; or for further details

Dropoffs accepted  
as early as 8 a.m.;  
pick-up til 5:20 p.m.



Mail: 12015 - 76 Street NW  
Edmonton, AB T5B 2C9  
780-474-2318

Family Discounts 15% applied  
for second student; 30% third

**Educational benefits of Chess:**  
[https://gardinerchess.com.au/  
educational-benefits-of-chess/](https://gardinerchess.com.au/educational-benefits-of-chess/)

# Chess Activities Calendar

The following scholastic chess competitions and activities in Edmonton and area are subject to change. Keep updated: regularly check the website: [www.rovingchessnuts.com](http://www.rovingchessnuts.com)  
Make sure you are on ChessNuts' e-mail contact list so you get newsletters, updates on school programs and other information. To subscribe, please e-mail: [rovingchessnuts@shaw.ca](mailto:rovingchessnuts@shaw.ca) or call: 780-474-2318.

## February: Roving ChessNuts' winter classes underway -

Limited number of seats available for Saturday Knights classes at 12019 76 Street. Weekday evening classes at southside Greenfield Hall, 3803 114 Street, are filled but new spring sessions are beginning soon. Evaluations still being held Saturdays, 9:00 and 9:30 a.m. for new students. Any student wanting to join these classes should apply by e-mail; if new, please book an evaluation first.



**Other training sessions are being arranged during February**, along with special workshops to get players ready for the individual and school team competition March 11 at Rogers Place. **Greenfield Hall workshops for first-time tournament players are scheduled for Thursdays, February 22 and March 1, 6:30 to 7:45 p.m.** (Fee is \$10, but limited room so please e-mail your



interest in one or both nights to: [rovingchessnuts@shaw.ca](mailto:rovingchessnuts@shaw.ca) or call 780-474-2318. Also opportunities are being extended to school class players interested in attending one free Roving ChessNuts class at either the north-east training facility or Greenfield Hall in order to meet and compete against opponents other than those involved in their school classes. Facing a variety of opponents and facing that challenge is essential to develop chess skills.



**Sunday, February 18: Girls Only Workshop** - only four seats left as of Feb. 12 - apply by e-mail or phone 780-474-2318. (More details below)

**March 1 & 2: Teachers' Convention Chess Camps at Roving ChessNuts.** Limited enrollment. E-mail or phone to reserve a spot. Chess Camp details will be available on front page.

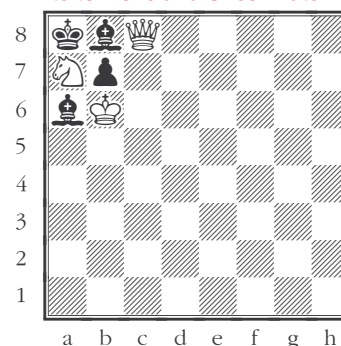
**March 11: Giant Scholastic Tournament at Rogers Place!** Link to updates and an entry/order form on our website.

Check [www.rovingchessnuts.com](http://www.rovingchessnuts.com) & future newsletters

for updates, new events and online registration for tournaments plus information on school programs and classes

## Last issue's Puzzle Answers

White to Move and Checkmate in two moves

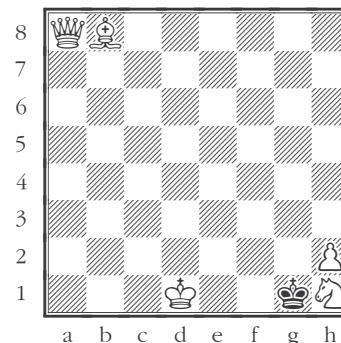


Key Move is:

1. Nb5

Black can only play Bxb5, white replies Qxb7#

White to Move and Checkmate in two moves



Key Move is:

1. Ng3

If black plays Kxh2, white replies with Qh1#

If black plays Kf2, white replies Ba6#

**Like any sport, your child should have proper items to practice with between their coaching times, classes, training activities and competitions**

**Tournament Chess Pieces with pouch & vinyl board**

RC student price: **\$23.00+GST**

These pieces are used in classes and tournaments



## Roving ChessNuts

12015 76 Street, Edmonton 780-474-2318

[rovingchessnuts@shaw.ca](mailto:rovingchessnuts@shaw.ca)

Orders can be placed by e-mail or phone; delivered to students in school programs or classes

Chess Books, Puzzle Books Travel sets and clocks also available

**Edmonton Girls Only Scholastic Chess Group**

**Invitation to Roving ChessNuts Workshop featuring**

# Agnieszka Matras-Clement

Alberta's Highest Rated Female Player • Third in 2017/18 Canadian Women's Championship

**Sunday, February 18, 2018** at Roving ChessNuts, 12019 76 Street, Edmonton

**Starting 1:00 p.m. Three hours of learning and playing chess**

**ONLY FOUR SEATS LEFT for female players with tournament experience**

**with preference given to those already entered in March 11 Chess**

**Faceoff at Rogers Place (with Oil Kings game included after tournament)**

**Fee: \$10 • Call 780-474-2318 to reserve spot & pay fee** (Entry in March 11 event also available by phone)

