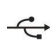


# Vector Pro 2.0 Hardware Installation (Windows Vista)

1. Install the two Vector Pro protective shields. The product warranty will not cover damages to the unit during use without the shields.
2. Use the AC adaptor to connect the Vector Pro to a power source.
3. Use the USB cable to connect the Vector Pro to your computer. Note: The USB symbol  on your computer will indicate where to insert the cable.
4. Fold the rear foot down on the back of the Vector Pro and set the unit on the ground.
5. Power on the Vector Pro. Two high pitched beeps will sound.

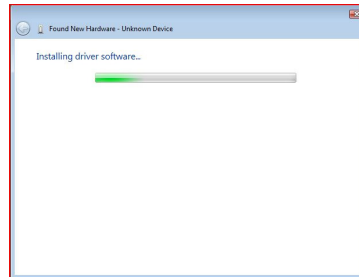


6. The Found New Hardware Wizard will appear. Select "Locate and install driver software" to continue.

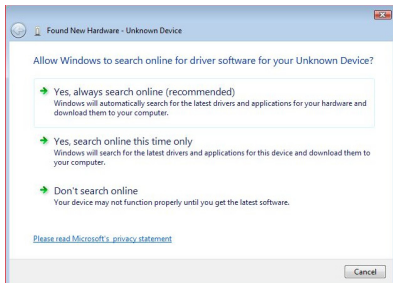


11. When the Windows can't verify the publisher of this driver software window appears, click **Install this driver software anyway**.

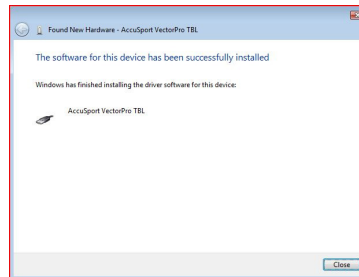
7. If User Account Control windows appears click Continue.



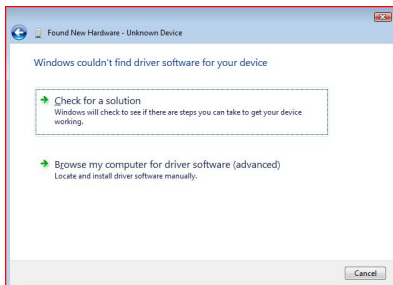
12. The Installing driver software window... will appear.



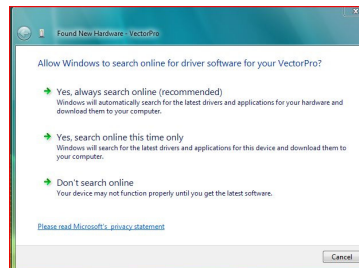
8. The Found New Hardware – Unknown Device will appear. Select "Don't search online".



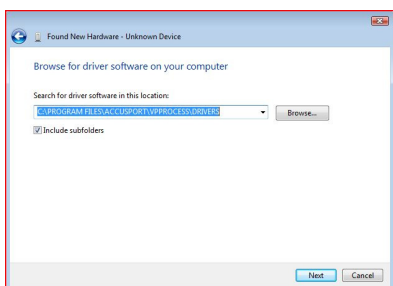
13. After the device driver has finished installing you will see a message "The software for this device has been successfully installed". The device listed will be either "AccuSport VectorPro TBL" or "AccuSport VectorPro TBL2". Hit Close button to continue.



9. Select "Browse my computer for driver software (advanced)" to continue.



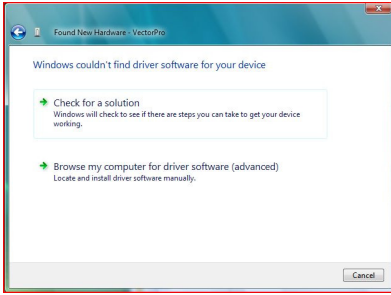
14. The Found New Hardware – VectorPro will appear. Select "Don't search online".



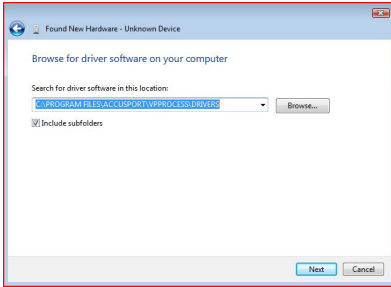
10. Type C:\Program Files\AccuSport\vpProcess\Drivers in File name and click **Next** or click **Browse** and navigate to the C:\Program Files\AccuSport\vpProcess\Drivers folder and click **OK**.



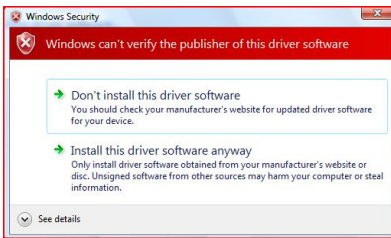
15. The message "Insert the disc that came with your VectorPro" will appear. Select "I don't have the disc. Show me other options" to continue.



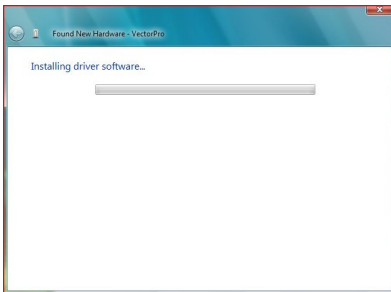
16. Click "Browse by computer for driver software (advanced) to continue.



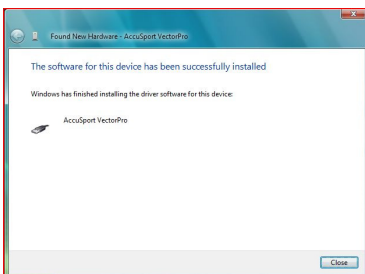
17. Type C:\Program Files\AccuSport\vpProcess\Drivers in File name and click **Next** or click **Browse** and navigate to the C:\Program Files\AccuSport\vpProcess\Drivers folder and click **OK**.



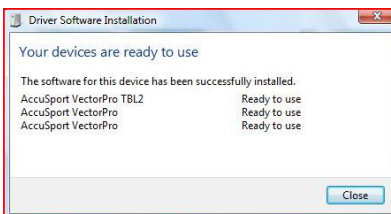
18. When the Windows can't verify the publisher of this driver software window appears, click **Install this driver software anyway**.



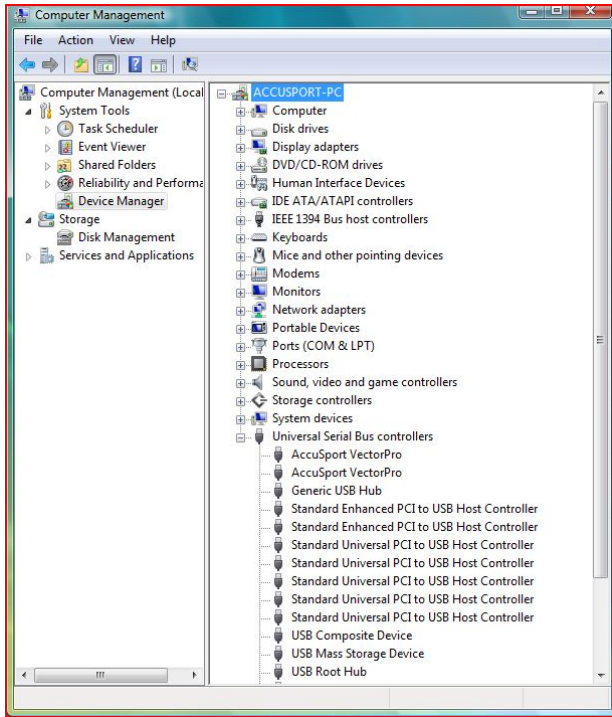
19. The Installing driver software window... will appear.



20. After the device driver has finished installing you will see a message "The software for this device has been successfully installed". Hit Close button to finish.



21. When the Vector Pro hardware installation is complete, Windows will give you the message, "Your new hardware is installed and ready to use." If you click on the window you will see the installed devices listed.



22. Follow these steps to confirm that the hardware is properly installed:

1. Click **Start** at the lower left corner of your computer screen.
2. Right click **Computer** and select **Manage**.
3. Click **Device Manager**.
4. Double click **Universal Serial Bus Controllers**.
5. Check to see that AccuSport Vector Pro is listed *twice*.