

VALERIO MODA MASK PRO.1 / PATTERN



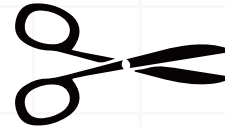
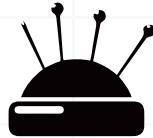
HOW TO MAKE A PROTECTIVE MASK - AN INSTRUCTIONAL GUIDE

VALERIO MODA MASK PRO.1 / PATTERN



WHAT YOU WILL NEED

SEWING MACHINE, IRON, NEEDLE, PIN, THREAD, CHALK OR PENCIL, SCISSORS, MATERIAL:



A *OUTER LAYER FABRIC* 7"X 7" 2X OPTIONS: 100% COTTON, SOFT DENIM T-SHIRT, SPORTSWEAR, POLO SHIRT, JERSEY, COTTON SHIRT

B *INNER LAYER FABRIC* 7"X14" 2X
OPTIONS: 100% COTTON, T-SHIRT, POLO SHIRT, JERSEY, COTTON SHIRT

F1 *FILTER MATERIAL* 6" X 4 1/2" 2X & ELASTIC 10 1/2 " 2X (SEE FILTER PAGE FOR DETAILS)

PATTERN A:
OUTER LAYER
7"X 7"

A CUT X2 ✂

PATTERN B:
INNER LAYER
7"X 7"

B CUT X2 ✂

PATTERN F2
FILTER 1:
6" X 4 1/2"

F1 CUT X2 ✂

ELASTIC
10 1/2" X2

E CUT X2 ✂

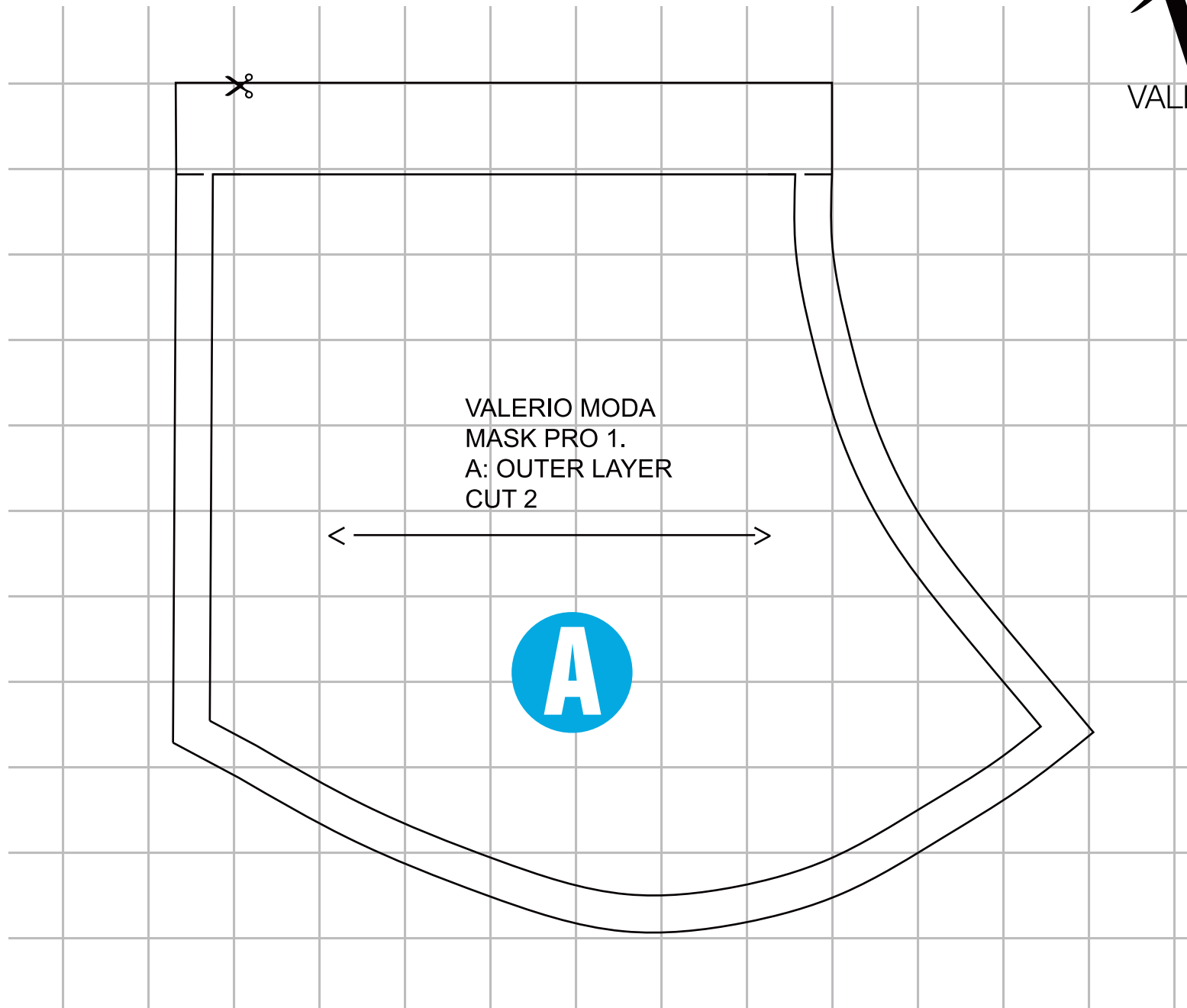
VALERIO MODA MASK PRO.1/ PATTERN



PATTERN A: OUTER LAYER 7"X 7"

A CUT X2

- **STEP 1:** MAKE SURE TO PRE-WASH THE FABRIC BEFORE START.
- IF YOU ARE USING FABRICS WITH A STRETCH PROPERTY MAKE SURE INNER AND OUTER LAYERS ARE EITHER BOTH STRETCH OR NOT, FOR THE BEGINNER IT IS BETTER TO NOT USE THE STRETCH FABRIC BECAUSE YOU CAN CONTROL IT EASIER.
- SKETCH YOUR DESIGN AND IDEA ON PIECE OF PAPER
- DOWNLOAD PATTERN FROM OUR WEBSITE: WWW.VALERIOMODA.COM
- OR TRACE THE PATTERN ON GRAPH PAPER.
- CUT THE PATTERN ON FABRIC FOLLOW THE STRUCTURE ON PATTERN
- **STEP 2:** STITCH CENTER LINE AND PRESS ALLOWANCE OPEN
- **STEP 3:** FOLD INSIDE/ BASTE/ PRESS AND TOP STITCH
- **STEP 4:** PLACE OUTER AND INNER LAYERS A+B FACE TO FACE/ PIN/ BASTE IT AND SEW TOP AND BOTTOM
- **STEP 5:** TURN THE MASK TO THE RIGHT SIDE/ PRESS THE EDGES/ TOPSTITCH TOP AND BOTTOM
- **STEP 6:** FOLD IN THE SIDES (ELASTIC POCKET) BASTE/ AND TOPSTITCH
- **STEP 7:** PLACE THE ELASTIC INTO THE SIDES(ELASTIC POCKET) JOIN THEN TOGETHER WITH HAND STITCH OR PIECE OF LEATHER.
- **STEP 8:** OPTIONAL: TAKE A SURGICAL MASK; TAKE THE TOP PART METAL PIECE AND PLACE TO THE FACE OF THE MASK AND HAND STITCH MIDDLE AND CORNERS
- **STEP 9:** OPTIONAL: CUT FILTER, SEW CENTER SEAM AND PLACE IT TO THE FILTER HOLDER



A4 - 100% SCALE

VALERIO MODA MASK PRO.1/ PATTERN

PATTERN B: INNER LAYER 7"X 7"

B CUT X2

FILTER 1:

F1 CUT X2

FILTER MATERIAL
4"X 3"

• **STEP 1:** MAKE SURE TO PRE-WASH THE FABRIC BEFORE START.

• IF YOU ARE USING FABRICS WITH A STRETCH PROPERTY MAKE SURE INNER AND OUTER LAYERS ARE EITHER BOTH STRETCH OR NOT. FOR THE BEGINNER IT IS BETTER TO NOT USE THE STRETCH FABRIC BECAUSE YOU CAN CONTROL IT EASIER.

• SKETCH YOUR DESIGN AND IDEA ON PIECE OF PAPER

• DOWNLOAD PATTERN FROM OUR WEBSITE: WWW.VALERIOMODA.COM OR TRACE THE PATTERN ON GRAPH PAPER.

• CUT THE PATTERN ON FABRIC FOLLOW THE STRUCTURE ON PATTERN

• **STEP 2:** STITCH CENTER LINE AND PRESS ALLOWANCE OPEN

• **STEP 3:** FOLD INSIDE/ BASTE/ PRESS AND TOP STITCH

• **STEP 4:** PLACE OUTER AND INNER LAYERS A+B FACE TO FACE/ PIN/ BASTE IT AND SEW TOP AND BOTTOM

• **STEP 5:** TURN THE MASK TO THE RIGHT SIDE/ PRESS THE EDGES/ TOPSTITCH TOP AND BOTTOM

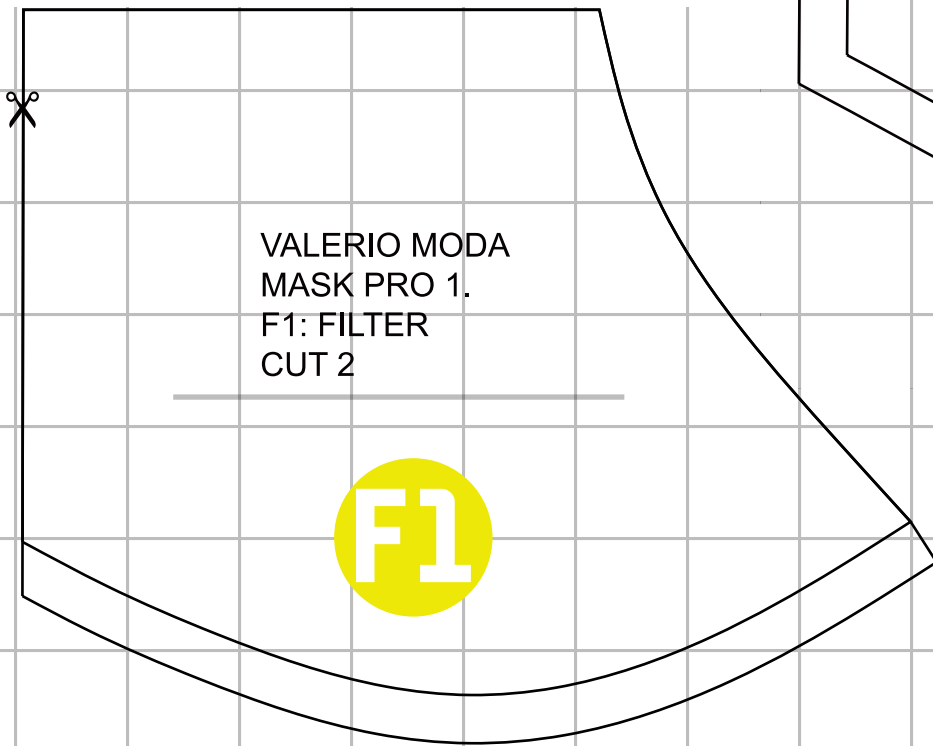
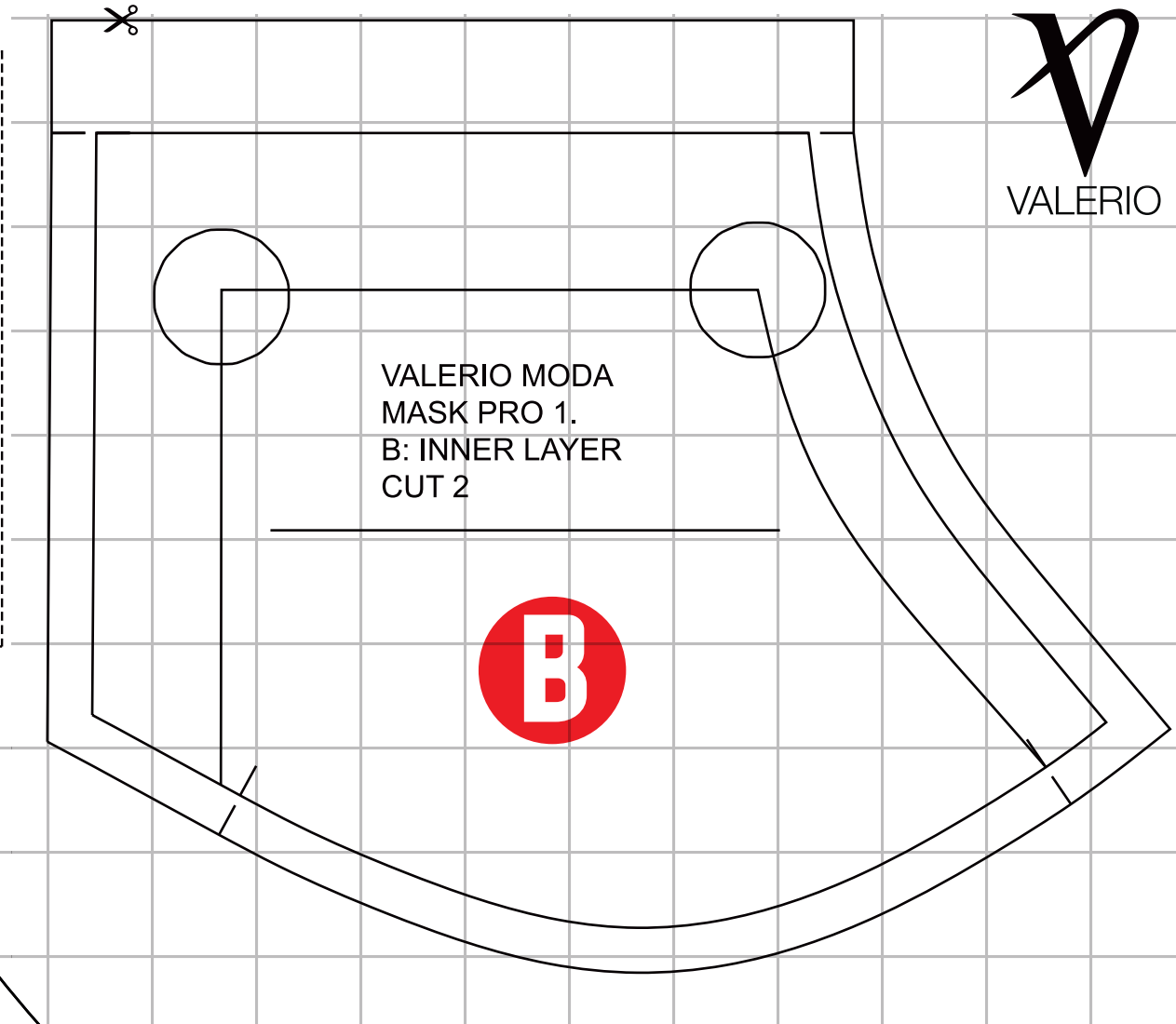
• **STEP 6:** FOLD IN THE SIDES (ELASTIC POCKET) BASTE/ AND TOPSTITCH

• **STEP 7:** PLACE THE ELASTIC INTO THE SIDES(ELASTIC POCKET) JOIN THEN TOGETHER WITH HAND STITCH OR PIECE OF LEATHER.

• **STEP 8:** OPTIONAL: TAKE A SURGICAL MASK; TAKE THE TOP PART METAL PIECE AND PLACE TO THE FACE OF THE MASK AND HAND STITCH MIDDLE AND CORNERS

• **STEP 9:** OPTIONAL: CUT FILTER, SEW CENTER SEAM AND PLACE IT TO THE FILTER HOLDER


VALERIO



WHAT YOU WILL NEED

SEWING MACHINE, IRON, NEEDLE, PIN, THREAD, CHALK OR PENCIL, SCISSORS, MATERIAL:

OUTER LAYER FABRIC 7"X 7" 2X OPTIONS: 100% COTTON, SOFT DENIM T-SHIRT, SPORTSWEAR, POLO SHIRT, JERSEY, COTTON SHIRT

INNER LAYER FABRIC 7"X14" 2X
OPTIONS: 100% COTTON, T-SHIRT, POLO SHIRT, JERSEY, COTTON SHIRT

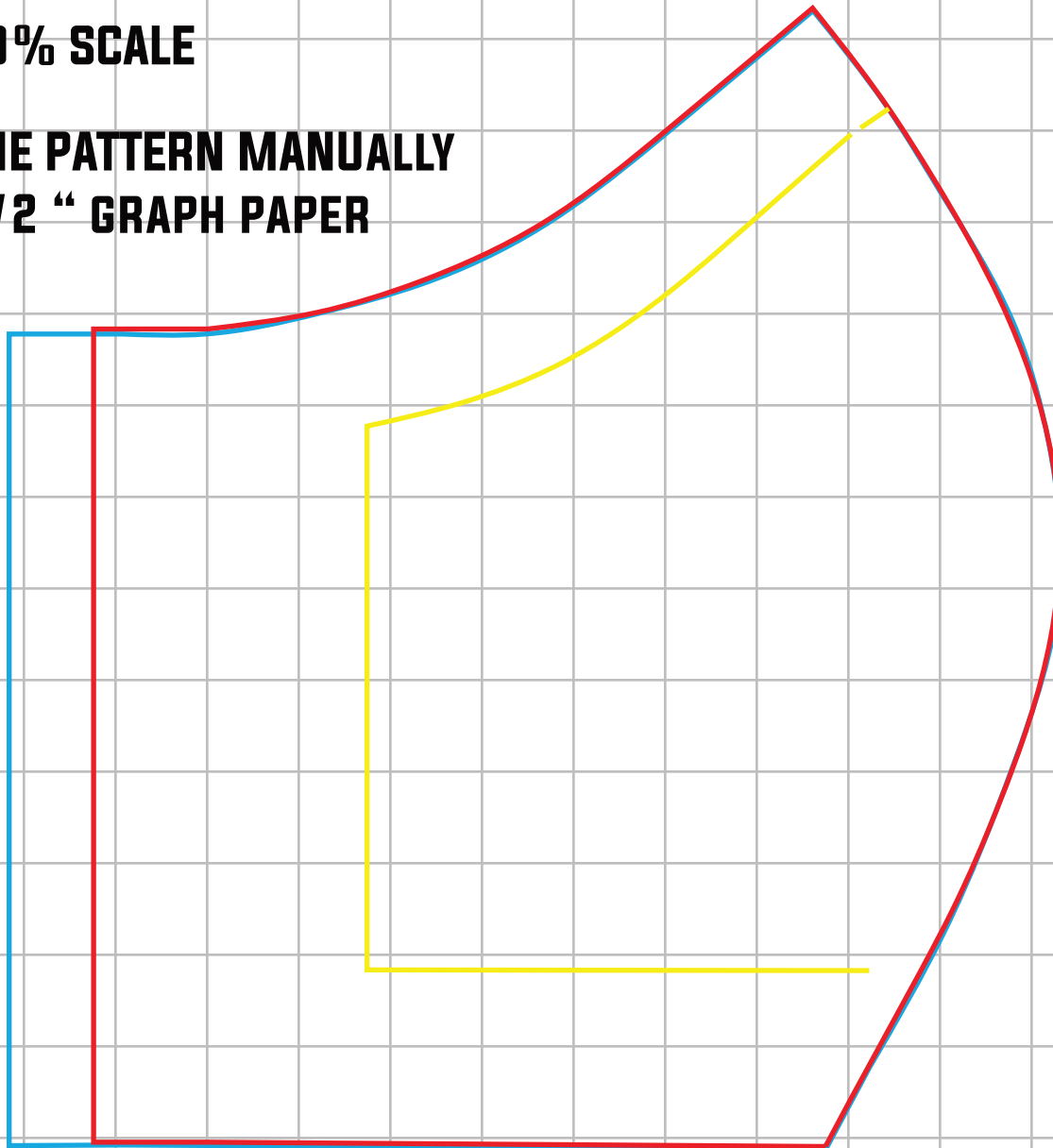
FILTER MATERIAL 6"X 4 1/2" // 2X ELASTIC 10 1/2" 2X

A4 - 100% SCALE

VALERIO MODA MASK PRO.1/ PATTERN LAYERING

A4 - 100% SCALE

TRACE THE PATTERN MANUALLY
USING 1/2 " GRAPH PAPER

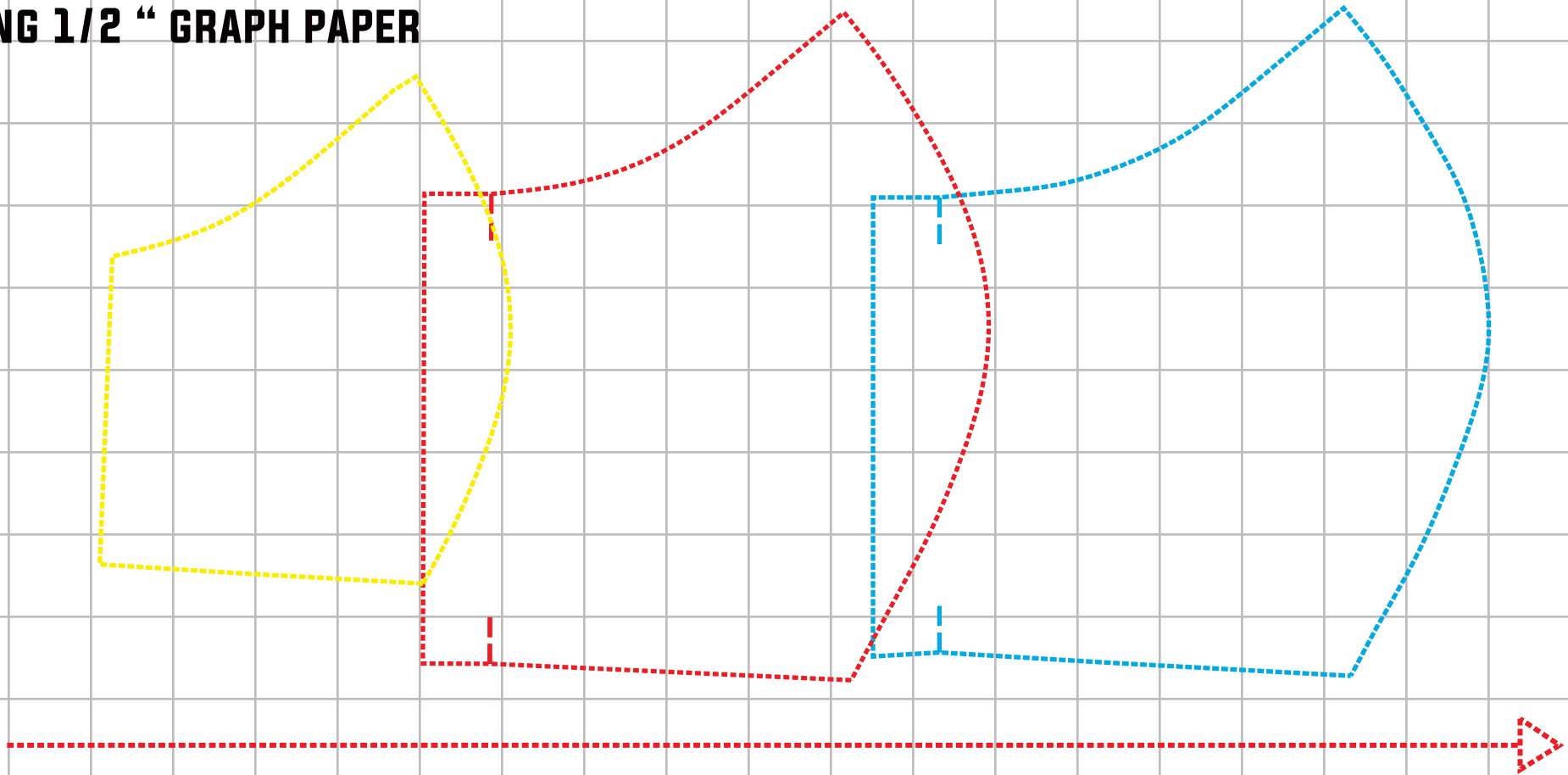


- A** OUTSIDE SHELL
- B** INSIDE LINING
- F1** FILTER

VALERIO MODA MASK PRO.1/ PATTERN ORDER

A4 - NOT TO SCALE

TRACE THE PATTERN MANUALLY
USING 1/2 " GRAPH PAPER



F1 SMALL FILTER

B INSIDE LINING

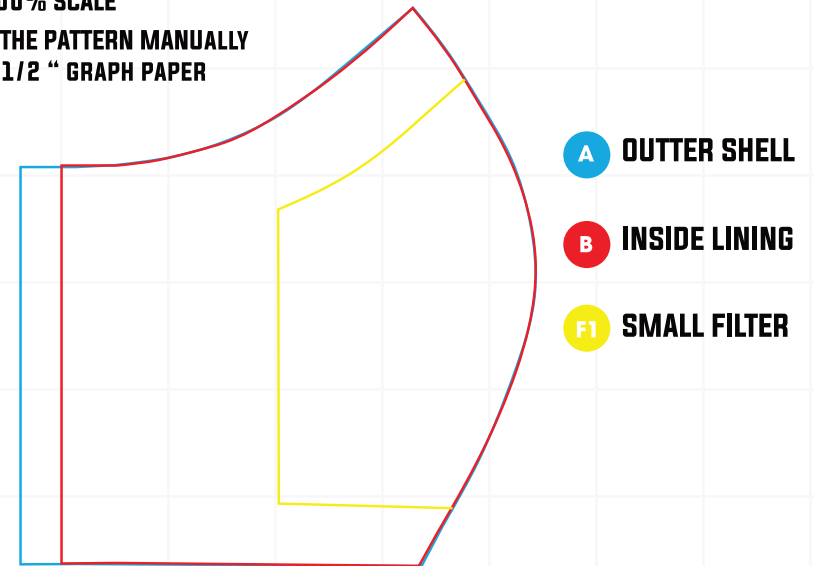
A OUTTER SHELL

VALERIO MODA MASK PRO.1 / PATTERN



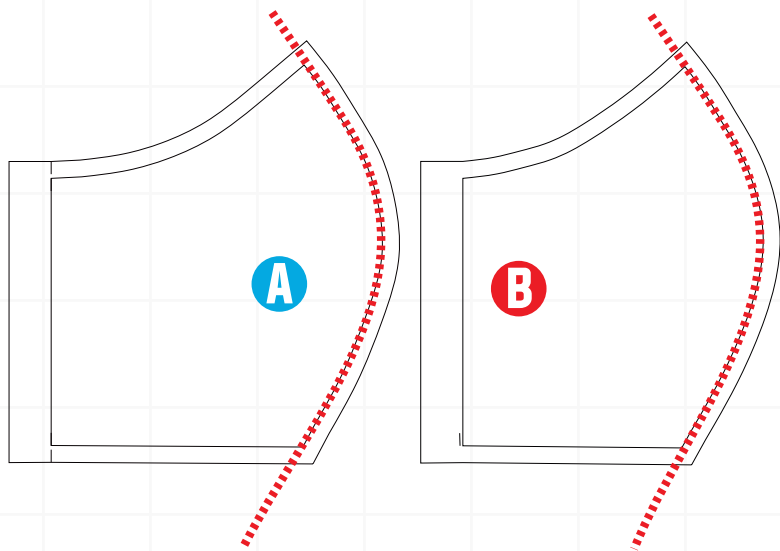
- **STEP 1: MAKE SURE TO PRE-WASH THE FABRIC BEFORE START.**
- **IF YOU ARE USING FABRICS WITH A STRETCH PROPERTY MAKE SURE INNER AND OUTER LAYERS ARE EITHER BOTH STRETCH OR NOT, FOR THE BEGINNER IT IS BETTER TO NOT USE THE STRETCH FABRIC BECAUSE YOU CAN CONTROL IT EASIER.**
- **SKETCH YOUR DESIGN AND IDEA ON PIECE OF PAPER**
- **DOWNLOAD PATTERN FROM OUR WEBSITE:
WWW.VALERIOMODA.COM**
- **OR TRACE THE PATTERN ON GRAPH PAPER.**
- **CUT THE PATTERN ON FABRIC FOLLOW THE STRUCTURE ON PATTERN**

VALERIO MODA MASK PRO.2 / PATTERN LAYERING
A4 - 100% SCALE
TRACE THE PATTERN MANUALLY
USING 1/2 " GRAPH PAPER

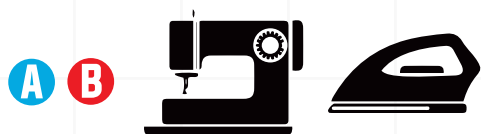


VALERIO MODA MASK PRO.1 / PATTERN

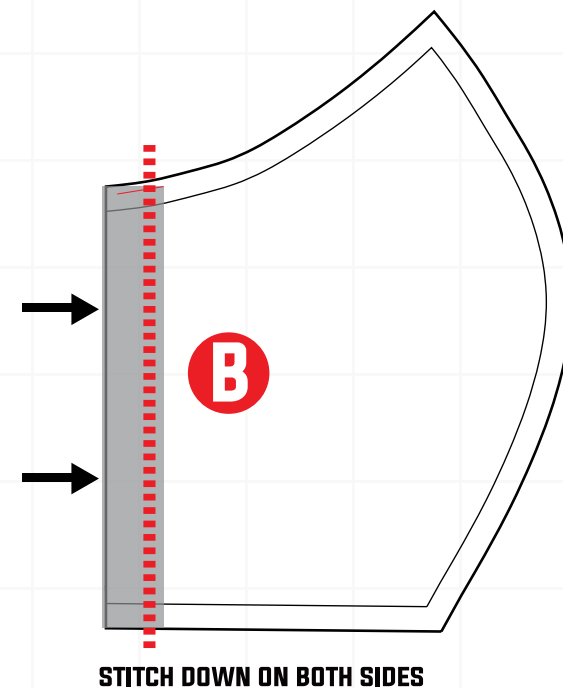
2.



- **STEP 2: STITCH CENTER LINE AND PRESS ALLOWANCE OPEN**



3.

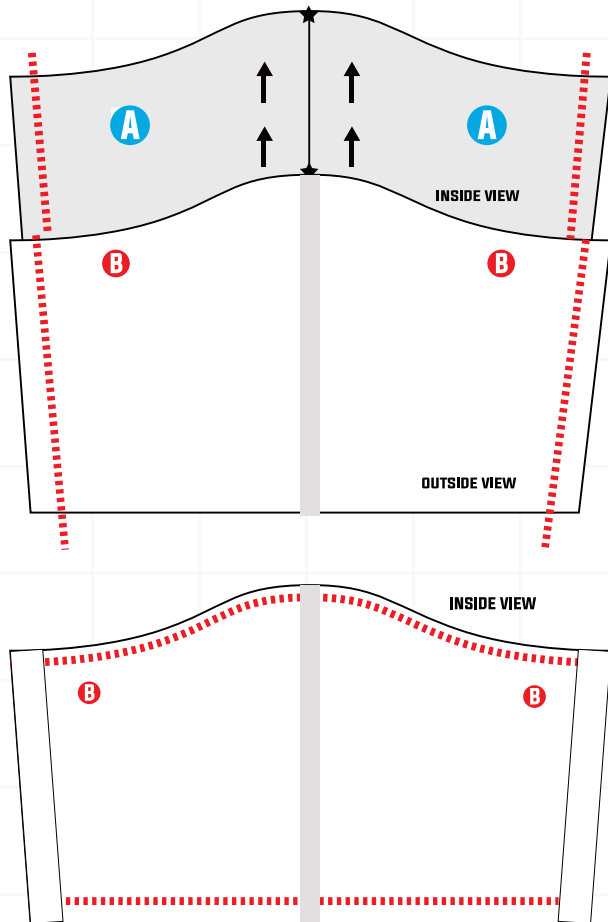


- **STEP 3: FOLD INSIDE/ BASTE/ PRESS AND TOP STITCH
FOLD THE HEM/ BASTE /TOPSTITCH**

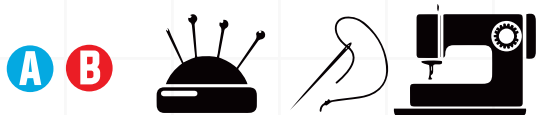


VALERIO MODA MASK PRO.1 / PATTERN

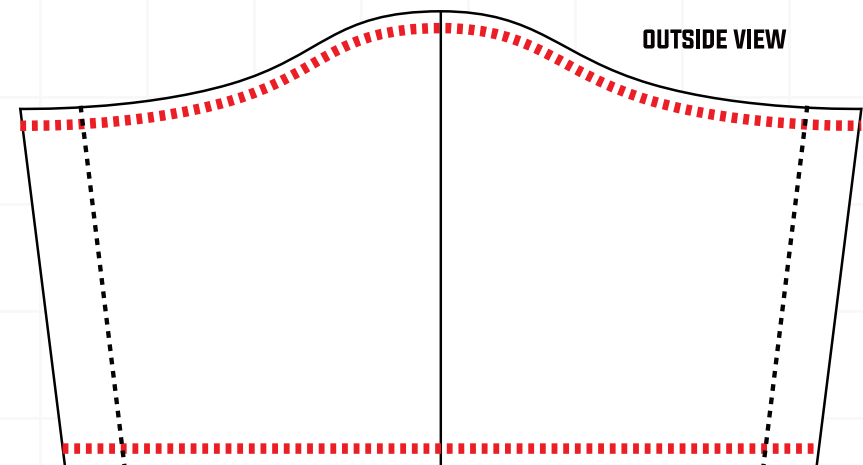
4.



STEP 4 : PLACE OUTER AND INNER LAYERS A+B
FACE TO FACE / PIN / BASTE IT AND SEW TOP AND BOTTOM



5.



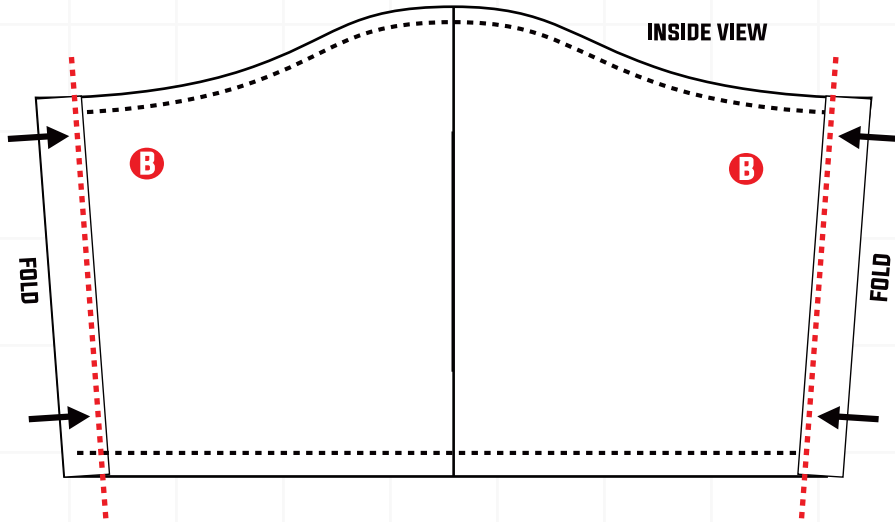
• **STEP 5 :** TURN THE MASK TO THE RIGHT SIDE / PRESS
THE EDGES / TOPSTITCH TOP AND BOTTOM



VALERIO MODA MASK PRO.1 / PATTERN



6.

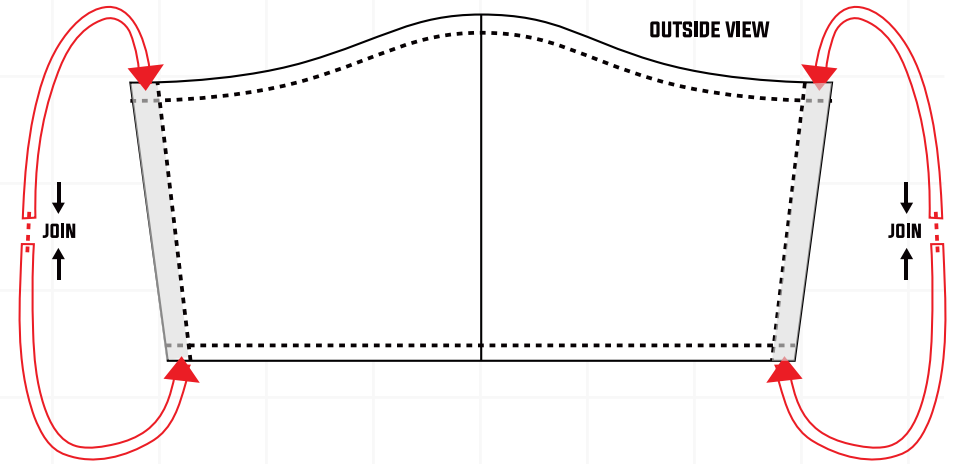


- **STEP 6:** FOLD IN THE SIDES (ELASTIC POCKET) BASTE/ AND TOPSTITCH

A B



7.



- **STEP 7:** PLACE THE ELASTIC INTO THE SIDES (ELASTIC POCKET) JOIN THEN TOGETHER WITH HAND STITCH OR PIECE OF LEATHER.

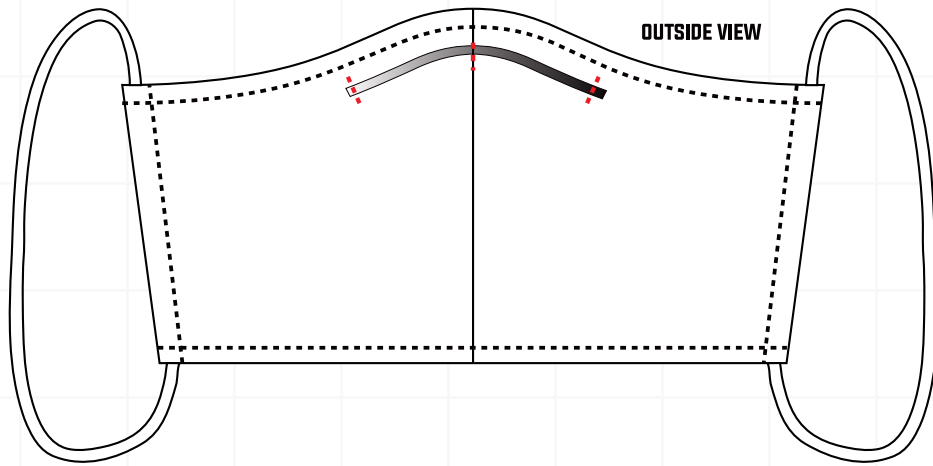
A B E



VALERIO MODA MASK PRO.1 / PATTERN



8.

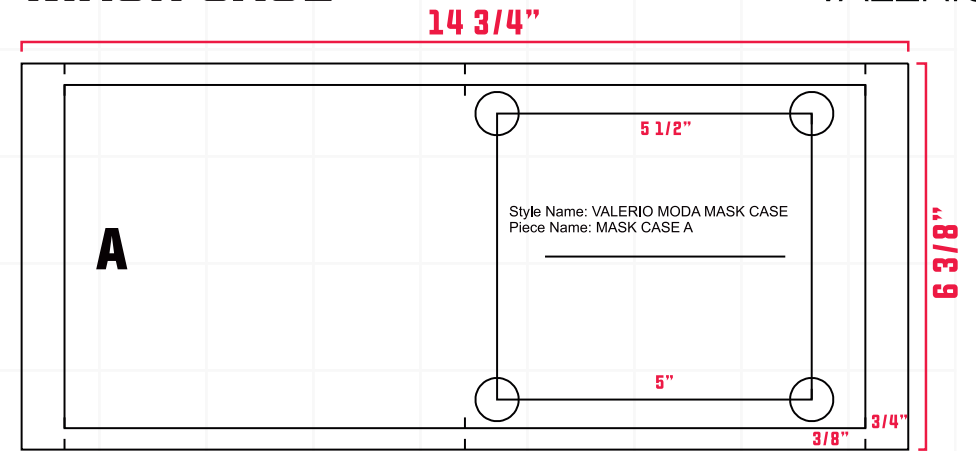


- **STEP 8: OPTIONAL: TAKE A SURGICAL MASK; TAKE THE TOP PART METAL PIECE AND PLACE TO THE FACE OF THE MASK AND HAND STITCH MIDDLE AND CORNERS**

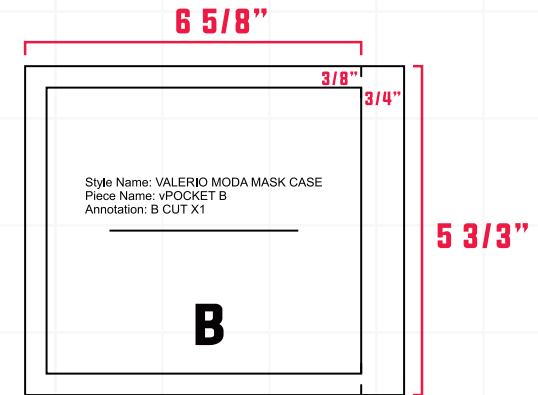
A **B** **E**



MASK CASE



NOT TO SCALE



NOT TO SCALE



VALERIO MODA MASK PRO.1 / PATTERN



FILTER INFORMATION

THE FILTER IS AN IMPORTANT COMPONENT OF THIS DESIGN

INSTRUCTIONS

STITCH CENTER LINE AND PRESS ALLOWANCE

WASHABLE + IRONABLE

PLACE IT INTO FILTER HOLDER: SEE DIAGRAM

YOU CAN ALSO PUT AN EXTRA FILTER IN FROM THE SIDE POCKET

THIS FILTER ALTERNATIVE CAN BE USED THE SAME WAY IN PRO.1

MATERIAL YOU CAN USE FOR SMALL FILTER

MICROPARTICLE AND AIRBORNE

ALLERGEN REDUCION MATERIAL

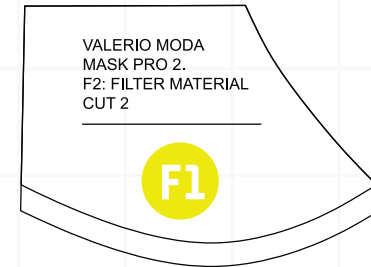
HAMMOCK FILTER

MATERIAL YOU CAN USE FOR LARGE FILTER

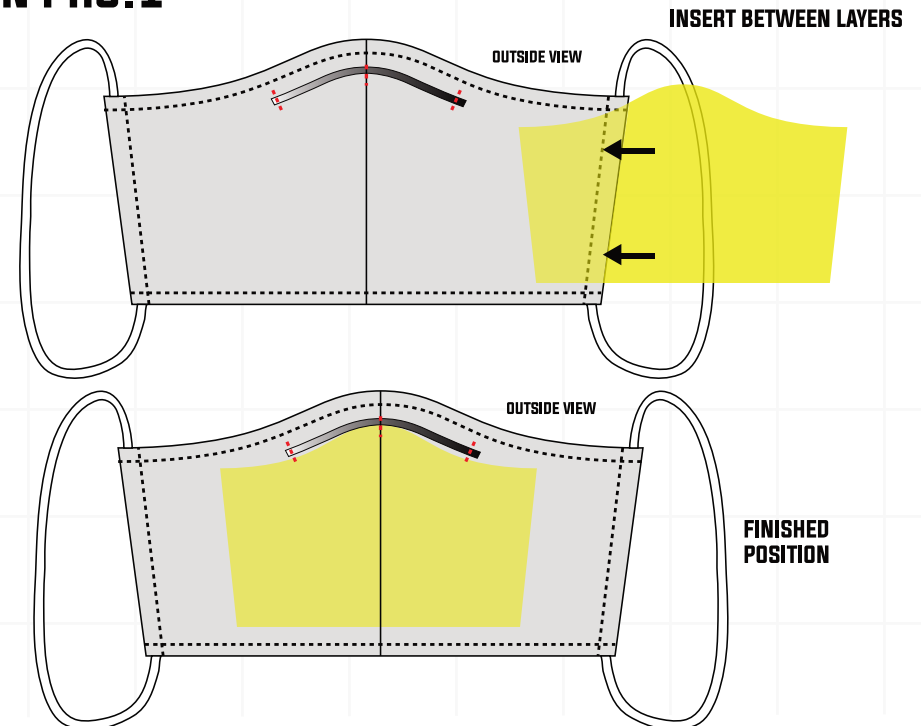
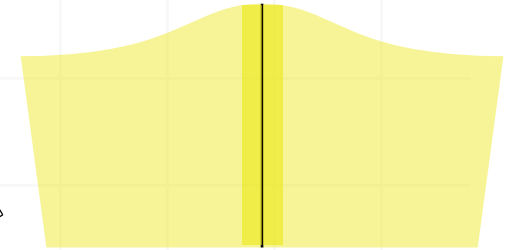
1.ELECTROSTATIC HAMMOCK FILTER PAD

2.DISPOABLE SURGICAL MASK

3.SANITARY PAD (REMOVE ALL PLASTIC PARTS)



OPEN VIEW, STITCHED AND PRESSED



VALERIO MODA MASK PRO.1 / PATTERN



CREATIVE DIRECTOR: ALI MOKHTARIAN

ASSISTANT DESIGNER: HIRAD MOKHTARIAN

PHOTOGRAPHER BY: JONATHAN CRUZ

**DIGITAL ILLUSTRATION- PATTERN PROGRAMING
BY: KYLE WAINMAN**

DIGITAL PATTERN: DARJA ZLINDRA

TECHNICAL COLLABORATORS:

DR. FABIO DE LUCA

DR. SIAVASH ATRCHIAN

KANAVERO REAL STATE GROUP



**WE ARE ALL IN
THIS TOGETHER.**

**SENDING YOU
ALL PRAYERS,**

BE SAFE

BE CREATIVE

BE HELPFUL

**GOD BLESS
ALI MOKHTARIAN**