

— EST. 1928 —

WARREN COUNTY

AGRICULTURAL FAIR

JULY 16-23, 2016

Roseville, Illinois

1st

PLACE



Your Community-Owned Elevator Since 1915

- Full Service Grain Elevator & Feed Mill
- Corn & Bean Storage
- Grain Merchandising
- DP Program & HTAs
- Direct Ship



**285 E. Broadway
Roseville, IL
309-426-2147**

A large, white, cylindrical grain elevator is shown on the right side of the image. It has horizontal corrugations. Painted in large, red, distressed capital letters on its side is the phrase 'ELEVATING YOUR FARM TO THE NEXT LEVEL'. The background shows a blue sky with clouds and a field of golden grain at the bottom.

WARREN COUNTY

AGRICULTURAL FAIR

TABLE OF CONTENTS

DESCRIPTION	PAGE #	DESCRIPTION	PAGE #
Table of Contents.....	1	DEPARTMENT H-A	
Officers, Executive Committee, Directors & Contacts	2	Junior Beef Cattle.....	21, 23
Corporate Sponsors.....	3	Junior Steers	27
4-H, Junior and Open Fair Schedule of Events.....	4-5	DEPARTMENT H-F	
Grandstand Admission Prices.....	5	Junior Sheep	29, 31, 33
Junior & 4-H Trophies & Awards	6 & 8	DEPARTMENT H-G	
Queen & Jr. Miss & Little Miss Warren County Fair Pageant	16	Junior Barrows	35
Fair Rules & Regulations	17	Junior Swine	37
Warren County 12th Annual Livestock Premium Auction	25	DEPARTMENT H-U	
MUD VOLLEYBALL RULES & ENTRY FORM	38-39	Junior Boer Goats	40-41
Warren County Fair Association Baked Goods Auction	50	DEPARTMENT K	
Warren County 2015 Contributors &		OPEN – Horticulture.....	42
Jr. Home Economics Food Show Winners	51	DEPARTMENT L	
FOOD TENT	53	OPEN – Floriculture	44-46
History of Past and Present Presidents & Vice Presidents	70	DEPARTMENT M	
History of Past and Present Secretaries & Treasurers	71	OPEN – Textiles, Crafts & Fine Arts	47
History of Past & Present Fair Directors	73	DEPARTMENT O	
Kids Day	74	OPEN – Dairy, Apiary & Culinary.....	48-49
JR & OPEN GENERAL PROJECTS ENTRY FORM.....	79 & 83	Fair Board President's Favorite	49
WCF ENTERTAINMENT TENT	81	DEPARTMENT P	
2015 Miss Warren County, Brooke Johnson	86	Junior Home Economics.....	52
JUNIOR LIVESTOCK ENTRY FORM	91	Department P-L Floriculture	53
Ad Index	95	Junior Horticulture & Floriculture Container Class	53
		Department P-M Arts & Crafts.....	54-55
		Department P-O Dairy, Apiary & Culinary	56-57
		DEPARTMENT Q	
		Tractor Pull	58
		FIGURE 8 DEMOLITION DERBY	64-66
		POWER WHEELS DERBY	66
		DEMOLITION DERBY	68 & 69



**MORE THAN YOUR FARM,
YOUR AMERICAN DREAM.**

We offer coverage that includes coverage for buildings, equipment and liability—all at competitive rates. Call today to get a quote to protect you and your farm.



Carol Shaw Agency
American Star Excellence
In Customer Experience
111 S 1st St
(309) 734-2990

**AMERICAN FAMILY
INSURANCE**
Insure carefully. Drive heartlessly.

American Family Insurance Company is a member of the American Family Insurance Company. American Family Insurance Company, 111 S 1st St, Decatur, IL 62521. © 2015. All rights reserved.



Visit our website at www.ilwcf.com

WARREN COUNTY

AGRICULTURAL FAIR

OFFICERS

PRESIDENT – Dan Byers • Berwick
VICE-PRESIDENT – Jeff Jensen • Roseville
SECRETARY – Tina Huston • Roseville
TREASURER – Ben Thompson • Roseville

EXECUTIVE COMMITTEE

Kevin Killey	Steve Killey	Tina Huston
Mike Huston	Brian Parkins	Rick Huston
	Dan Byers	

DIRECTORS

<u>2013-2016</u>	<u>2014-2017</u>	<u>2015-2018</u>
Mike Huston	Bill Thompson	Dan Byers
Tina Huston	Brian Parkins	Rick Huston
Mitch Gibb	Jeremy Anderson	Shane Gipe
Ben Thompson	Mark Gillen	Bob Carlson
Kevin Killey	DeNeene Killey	Jim Anderson
Steve Killey	Will Zimmerman	Jeff Jensen
Ryan McClure	Joe Gibb	Lynn Shimmin
Joe Huston	Jeff Johnson	Jesse Thorton
Jon Strickler	Kendall Shimmin	TJ Stevenson

CONTACTS

BEEF	Mike Huston	309-368-2615
SWINE	Kevin Killey	309-255-4626
SHEEP	Lynn Shimmin	309-224-1469
JR. BOER GOAT	Kendall Shimmin	309-224-5930
MUD VOLLEYBALL	Steve Killey	309-331-4970
LITTLE MISS, JR. MISS & MISS PAGEANT	DeNeene Killey	309-255-0351
TRACTOR PULL	Ryan McClure	309-255-6700
FIGURE 8 & DEMO DERBY	Ben Thompson	309-255-3150
FLORICULTURE	LaJune Carlson	309-426-2758
OPEN HORT., JR. & OPEN HOME ECONOMICS.	Amy Thompson	309-221-9618
GROUNDS	Joe Huston	309-221-2757
FOOD TENT	Mark Gillen	309-255-0017
ENTERTAINMENT	Mitch Gibb	309-255-4881
FAIR ENTRIES & ADVERTISING	Tina Huston	309-368-6549

Thank You to Our 2016 Corporate Sponsors



Wise Family - Hoover Hall
"Our Family Serving Yours"



WESTWOOD
Embryo Services Inc.
Dr. Michael Pugh, DVM, MS



DISTRIBUTORS
est. 1946



FARMERS GRAIN COMPANY
fgcroseville.com ROSEVILLE



Citizens Bank
A Division of Morton Community Bank
Member FDIC



Thompson Insurance Agency, Inc



MATT MAHONEY



PIONEER
A DUPONT COMPANY



1ST FARM CREDIT SERVICES
— YOUR FIRST CHOICE FOR AGRICULTURE —

2016 WARREN COUNTY AGRICULTURAL FAIR

JUNIOR & 4-H FAIR SCHEDULE OF EVENTS



MONDAY • JUNE 13

4-H Fair Entries due to the Warren County Extension Office

TUESDAY • JUNE 28

4-H General Project Show *at the American Legion, Monmouth, IL • See 4H Schedule for details*

FRIDAY • JULY 15

JUNIOR FAIR ENTRIES DUE TO: WARREN COUNTY FAIR ASSOCIATION

P.O. BOX 136
ROSEVILLE, IL 61473

Check in Horses *at Warren County Fairgrounds* 8:00 - 8:30 a.m.

4-H Horse Show *at Warren County Fairgrounds* 9:00 a.m.

SATURDAY • JULY 16

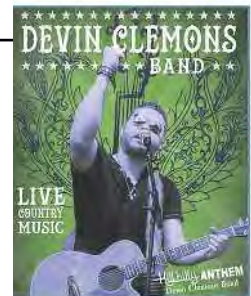
MISS WARREN COUNTY QUEEN, JR. MISS AND LITTLE MISS PAGEANT 5:30 p.m.

The Warren County Fairboard Will Be Serving Food Starting at 5:00 p.m.

DEVIN CLEMONS BAND in the WCF ENTERTAINMENT TENT

Doors OPEN at 6:00 p.m. The band will start at approximately 9:00 p.m. after the pageant.

FOOD & BEVERAGES WILL BE AVAILABLE



SUNDAY • JULY 17

MUD VOLLEYBALL 1:00 p.m.

The Warren County Fairboard Will Be Serving Lunch Over By The Volleyball Courts

TUESDAY • JULY 19

4-H Set up at the Fair Grounds 8:30 a.m.

4-H Cat Care *at the Roseville Rehabilitation & Health Care Center* 1:00 p.m.

4-H Dog Care 1:30 p.m.



WEDNESDAY • JULY 20

4-H Check in Poultry & Rabbits 8:30 a.m.

4-H Poultry Show 9:00 a.m.

4-H Rabbit Show Immediately following the Poultry Show

4-H Goat Weigh-In/Check-In 11:30 p.m.

4-H Dairy Show & Bucket Calf Show 1:00 p.m.

4-H Goat Show Immediately following the Dairy & Bucket Calf Show

4-H & Junior Show Livestock Weigh-In/Check-In for all Species 6:00 - 7:30 p.m.

CARNIVAL ARMBAND NIGHT 6:00 - 10:00 p.m.

Department Q – Tractor Pull 6:30 p.m.

FOOD TENT– Tri-County Cattlemen Starting at 5:00 p.m.

Visit our website at www.ilwcf.com



THURSDAY • JULY 21

4-H Swine Show	8:00 a.m.
Master Showmanship Swine	Immediately following the Swine Show
4-H Sheep Show	Completion of the Swine Show
Master Showmanship Sheep	Immediately following the Sheep Show
4-H Beef Breeding Show.....	Following Master Showmanship Sheep
4-H Steer Show	Following Beef Breeding Show
Master Showmanship Beef	Following Market Beef Show

***(4-H ONLY Livestock who DO NOT wish to exhibit in Junior Show
may leave at conclusion of 4-H Beef Show)***

Department L – Open Flower Show	10:00 a.m.
Department K – Open Horticulture Show	1:00 p.m.

**WARREN COUNTY 12TH ANNUAL LIVESTOCK PREMIUM AUCTION6:00 p.m. - Swine Show Ring
(All Exhibitors will be required to exhibit their animal)**

CARNIVAL ARMBAND NIGHT	6:00 - 10:00 p.m.
POWER WHEELS DERBY	6:30 p.m.
Figure 8 Demo Derby	7:00 p.m.
FOOD TENT – Lion's Club	Starting at 5:00 p.m.

FRIDAY • JULY 22

Department H-G – Junior Barrow Show	8:00 a.m.
Department H-G – Junior Swine Show	Following Jr. Barrow Show
Department H-F – Junior Sheep Show	Immediately following the Jr. Swine Show
Department H-U – Junior Boer Goat Show.....	Immediately following the Jr. Sheep Show
Department P – Junior Home Economics Show.....	9:00 a.m.
Department M – Open Textiles, Crafts & Fine Arts.....	9:00 a.m.
Department O – Open Dairy, Apiary & Culinary	9:00 a.m.
FOOD TENT – Roseville Kids Place	Starting at 5:00 p.m.
CARNIVAL ARMBAND NIGHT	6:00 - 10:00 p.m.
POWER WHEELS DERBY	6:30 p.m.
Figure 8 Demo Derby	7:00 p.m.
HOME ECONOMICS BAKED GOODS AUCTION	Intermissions of Demo Derby
ENTERTAINMENT TENT–DIRT ROAD ROCKERS	Immediately following the Figure 8 Derby

SATURDAY • JULY 23

Department H-A – Junior Beef Breeding (Heifers then Steers).....	8:00 a.m.
Department H-A – Junior Steer Show	Immediately following the Jr. Beef Breeding Show
Kid's Day	3:00 p.m.
FOOD TENT – Sauced & Smokin' (Steve Killey & Jesse Thorton)	Starting at 5:00 p.m.
POWER WHEELS DERBY	6:00 p.m.
Demo Derby	6:30 p.m.
CARNIVAL ARMBAND NIGHT	6:00 - 10:00 p.m.
ENTERTAINMENT TENT– JERAD HARNESS & BLACKGRASS	

Immediately Following Demo Derby



2016
WARREN COUNTY
AGRICULTURAL FAIR

TROPHIES & AWARDS

CATTLE

Grand Champion Female	Ron and Dan Byers Forage	JACKET
Champion Lightweight Steer	Sprout Family Farms	AWARD
Champion Mediumweight Steer	Dwyer Cattle Services	AWARD
Champion Heavyweight Steer	CGB Enterprises, Inc.	AWARD
Grand Champion Steer	Huston Cattle Company	JACKET

SWINE

Champion Gilt Over All Breeds	Farmers Grain Co.	JACKET
Champion Litter Over All Breeds	Carthage Livestock, Inc.	AWARD
Champion Lightweight Barrow	Ryan Show Pigs, Lance & Andrea Ryan	AWARD
Champion Mediumweight Barrow	Anderson Custom Baling, Jim & Mike Anderson	AWARD
Champion Heavyweight Barrow	Roseville Veterinary Services, P.C.	AWARD
Grand Champion Barrow	Security Savings Bank	JACKET
Champion Pair of Barrows	1st Farm Credit Services	AWARD

SHEEP

Champion Ram Over All Breeds	West Central FS, Inc.	JACKET
Champion Ewe Over All Breeds	Warren Heating & Cooling	JACKET
Grand Champion Wether	Jerry Adkisson Family	JACKET

GOAT

Grand Champion Wether	Carthage Livestock Inc.	JACKET
Grand Champion Doe	Pioneer, Matt Mahoney	JACKET



John & Katie Steele
(309) 426-9900

HOURS:
Mon-Thurs. & Sat. 5am-2pm
Friday 5am-8pm
Sunday 6am-2pm



Will Zimmerman • President

309.645.9724

Kyle Hummell • Sales &/Service

309.333.8077

Office 309.465.7800

1790 - 23rd Avenue • Avon, IL 61415 • moderngrainsystemsinc@gmail.com



We build, repair, and maintain grain storage facilities and equipment including Grain Bins, Grain Legs, Grain Dryers, Conveyors, Towers, Catwalks and Overhead Structures.



Grain Bins



Grain Dryers



Grain Legs



Concrete Work



**Grain Bin Construction
and Remodeling**



Millwright Work

OFFICIAL DEALERS OF: Conrad American Grain Bins • MFS Grain Bins • Neco Dryers • York Grain Legs & Conveyors • Hutinchinson/Mayrath Handling Equipment • Brownie Catwalks, Stairs & Towers • Lemar Catwalks & Towers • Shivers Drying Equipment.

TROPHIES & AWARDS *(continued)*

FLOWER SHOW

Best of Show	In Memory of Her Mother Marjorie Lewis, by Robert & LaJune Carlson.....	JACKET
First Runner Up	In Memory of Lucile McVey, by Her Family.....	JACKET
Senior Champion.....	In Memory of Lucille Hall, by Steve Hall & Alice Jury	JACKET

FIGURE 8 DERBY • THURSDAY NIGHT

Champion Figure 8 Derby	In Memory of Robert Huston, by His Family	TROPHY
Second	Cole Implement	TROPHY
Third	Johnson Plumbing, Inc.	TROPHY

WIRE ONLY CLASS • THURSDAY NIGHT

Champion Wire Only Class	Parkins Trucking	TROPHY
Second	Western Illinois Realty	TROPHY
Third	E.T. Auto Sales	TROPHY

FIGURE 8 DERBY • FRIDAY NIGHT

Champion Figure 8 Derby	In Memory of Amy Thompson, by Robert G. Thompson Trucking....	TROPHY
Second	Randall's Performance, Inc.	TROPHY
Third	Ed & Keri Allen and Family.....	TROPHY

WIRE ONLY CLASS • FRIDAY NIGHT

Champion Wire Only Class	Kunes Country Auto Group.....	TROPHY
Second	Western Illinois Realty	TROPHY
Third	E.T. Auto Sales	TROPHY

MUD VOLLEYBALL

SENIOR DIVISION

1st Place	CGB Enterprises, Inc.	\$200 & TROPHY
2nd Place	Studio Eleven07	\$100 & TROPHY
3rd Place	Thompson Insurance Agency, Inc.	\$60 & TROPHY

JUNIOR DIVISION

1st Place	Huston Veterinary Service	\$60 & TROPHY
-----------------	---------------------------------	---------------

KIDDIE TRACTOR PULL

Class 1 (0-40 lbs) –	TROPHY
Class 2 (41-55 lbs) –	TROPHY
Class 3 (56-75 lbs) –	TROPHY
Class 4 (75 to 100 lbs) –	TROPHY



**Combined 30 years experience
plumbing, heating and cooling.**

**Our company provides drain cleaning, residential,
new construction, remodels, free estimates and
24 HOUR EMERGENCY SERVICE**

License #058-172230

We Care As Much As You Do.



*we are here for all your
large & small animal needs*



Dr. Raymond Huston & Dr. Luke Deverell
(309) 426-2419

(888) 699-0189 • Fax: (309) 426-2559

500 State Highway 116 • P.O. Box 595 • Roseville, IL 61473

Email: hustonrt@midwest.net



Ron Byers
Office: (309) 426-9922
Cell: (309) 221-9922
Fax: (309) 426-2408

Dan Byers
Cell: (309) 337-6738
danbyers90@gmail.com



**RON AND DAN BYERS
FORAGE**

902 - 105TH STREET • BERWICK, IL 61417



HERE'S TO THE NEXT 100 YEARS OF AGRICULTURE.



700 E. Jackson Avenue • Monmouth, IL 61462
(800) 432-6267 • www.1stfarmcredit.com




FARM CREDIT
100
ESTABLISHED 1916



WESTERN ILLINOIS HOME HEALTH CARE



**PROVIDING IN-HOME SERVICE TO
WESTERN ILLINOIS FOR **35** YEARS**

Monmouth: 309-734-9376 • Galesburg: 309-342-2024
Canton: 309-649-6001 • Macomb: 309-837-9422

www.wihhc.com



*Good Luck to all the
Fair Exhibitors!*



(309) 221-8282

**Brad & Robin Corzatt
Madison, Logan & Mallory**



Big River Resources , LLC

Community Preservation, Employment, Return on Investment

MAIN: 319-753-1100
FAX: 319-753-1103
211 N. GEAR AVE. SUITE 200
WEST BURLINGTON, IA 52655
WWW.BIGRIVERRESOURCES.COM

ETHANOL

PROCESSING CORN INTO RENEWABLE FUEL AND FEED

SUPPORTING RURAL AGRICULTURE

AND

ADDING VALUE TO OUR COMMUNITY

BIG RIVER RESOURCES
MONMOUTH
(309) 734-8423
LOCATION MANAGER
KEVIN LOVDAHL

BIG RIVER RESOURCES
WEST BURLINGTON
(319) 752-7470
GRAIN MERCHANDISER
MATT NOSBISCH

BIG RIVER RESOURCES
GALVA
(309) 932-9977
GRAIN MERCHANDISER
DENNIS AUPPERLE

BIG RIVER RESOURCES
EDGINGTON
(309) 795-1700
LOCATION MANAGER
TERRY SPONHEIM

BIG RIVER RESOURCES
ALL IA & IL SITES
(319) 768-5864
DDGS MERCHANDISER
RON STOVER

Individuals united in a cooperative effort for a just reward due to diligent labor; Help us keep it that way.



Proud to Serve Our Community & Surrounding Area!

(309) 426-2414

Store Hours:

Sunday: 8 a.m. – 8 p.m. • Monday – Saturday: 7 a.m. – 9 p.m.

225 E. Penn • Roseville, IL 61473

**Coldest
Beer
in Town!!**

Everyday Low Prices

**Imported &
Domestic Beer
& Wines
Champagne
Premium Liquors**

THE BEST AGRONOMICS



Start
with the
right product
on the
right acre

Getting the right product on the right acre depends on the right package of agronomic traits for each field. At Pioneer, hybrid advances result from research conducted where you live — in the extreme conditions you often face. Pioneer uses an industry-leading scoring system to measure agronomic traits, including emergence, root and stalk strength, disease resistance, and drought and stress tolerance. Data-driven agronomic ratings and on-farm experience enable your Pioneer sales professional to recommend hybrids with excellent plant health and standability for each of your fields. The result: maximum harvestable yield.



PIONEER®
A DUPONT BUSINESS

*Science with Service
Delivering Success™*

MATT MAHONEY

(309) 462-2684 • Cell (309) 337-0611

848 - 130th St. • Berwick, IL 61417 • matt.mahoney@plantpioneer.com

www.pioneer.com/corn



2015 Warren County Fair Queen
Brooke Johnson

2016 23rd Annual Miss, Jr. Miss & Little Miss Warren County Fair Queen Pageant

Saturday • July 16th • 5:30 p.m.

Roseville Eldridge Park

*The WCF Board will be serving food
starting at 4:30 p.m. near the shelter house*



2015 Warren County Fair
Junior Miss Murphy Sage



2015 Warren County Fair
Little Miss Lucy Parkins

2016

WARREN COUNTY

AGRICULTURAL FAIR

RULES AND REGULATIONS

1. The 2016 Fair will begin on Wednesday, July 20 and end on Saturday, July 23.
2. The Fair Board reserves the right to postpone the time of exhibitions of any class, article or animal on account of bad weather, or for any other good and sufficient reason.
3. All livestock showing in the Jr. Show must be on the fair-grounds by 5 p.m. on Wednesday, July 20 and will be released at the conclusion of the Jr. Steer Show.
4. Only two entries per class by an exhibitor unless otherwise limited by department.
5. All classes with less than five entries will be combined whenever possible at the decision of Department Superintendent.
6. Exhibitors must be able to prove ownership of entries for thirty days prior to show.
7. All breeding stock must be registered in the name of the exhibitor. All animals must meet health requirements of the livestock exhibition rules. Health and registration papers are due at the time of weigh-in. **THIS WILL BE STRICTLY ENFORCED.**
8. Premise ID required for all livestock.
9. All livestock entered in the Junior Shows and the 4-H Show must pay stall or pen fees. Stall and pen fees will be \$5.00 per head for all cattle and \$7.00 per pen for all swine, sheep & goats. Limit of 4 animals to a pen.
10. All entries must be accompanied by payment for Stall and Pen fees. **DO NOT SEND ENTRY FEES. A late fee of \$20 per head will be accessed for any entries received after Friday, July 15. This fee is due when entries are made.**
11. All entries **MUST** be in the Secretary's hands by Friday, July 15.
MAIL TO: Warren County Fair Association
P.O. Box 136
Roseville, IL 61473
12. No animal is to occupy a stall or pen on the grounds of the Fair Association unless competing for a premium, or there as a nurse animal for others that are competing and then the regular stall or pen fee must be paid for such animal.
13. **ABSOLUTELY NO** exhibitor to stay overnight at the fair-grounds. These rules will be enforced. Security will check on animals and the fairgrounds during this period.
14. All animals must be exhibited in the show ring by the owner unless special permission is granted by the Department Superintendent.
15. **ABSOLUTELY NO** marking pens or bedding pens before NOON, Tuesday. This will be enforced.
16. Washing facilities will be available on the grounds.
17. Please hold bedding to a "reasonable amount" because of the fire hazard.
18. Junior Show open to boys and girls who are 8 years of age prior to January 1 of the year in which they will show or will not be 21 years of age until after December 31 of the year in which they will show. Group placings are not permitted. Animals shown in Junior Shows must be property of the boys or girls showing them. (This may be proven by examining the registration certificates.)
19. Departments A, F, G, H, K, L, M, O, P and U are open to all counties.
20. Every animal or article exhibited on the grounds shall be under control of the Superintendent of its class; and no article or animal shall be removed from the Fair Grounds without permission of the livestock superintendent.
21. Care will be taken to prevent loss or injury to animals or articles on exhibition, but the Association will not be responsible for any loss or damage that may occur. No animal will be allowed to run at large on the grounds.
22. In case of a dispute over which class the animal is to be shown, the Superintendent's decision is final.
23. Neck straps required on all cattle.
24. All animals must be washed.
25. **Premium checks may be picked up at the fair office on Saturday, July 23rd, after 6:00 p.m. If you can not make it at this time please call (309) 368-6549 to make other arrangements. If you would like your check mailed to you, you must bring a self-addressed stamped envelope to the Fair Office the day of your event.**
26. The Warren County Fair Board is not responsible for accidents or omissions.
27. Any decision made by the Warren County Fair Board is final.

The Illinois County Fair Exhibition Requirements may be found at: <http://www.agr.state.il.us/AnimalHW/CountyFairRules.pdf>

The Department of Agriculture shall use its best efforts to secure sufficient appropriations to fund premiums. In any year for which the General Assembly of the State of Illinois fails to make an appropriation sufficient to pay such premiums, premium amounts may not be accurately reflected in the premium book.

YOUR LOCAL ONE-STOP SHOP

STARTED LOCAL. STAYED LOCAL.

Fusion Tech has quickly become the superior source for design and fabrication needs nation-wide. What started with just three people in a garage outside Roseville has grown to a professional company employing over 80 local residents - and we're continuing to grow.

We take great pride in our community, continuing to provide facility designs, concept layouts, equipment design, and fabrication of equipment for companies throughout Warren County, while taking on clients nation-wide. From the small farm equipment manufacturer to the international corporation, Fusion Tech has what it takes to provide quality design and fabrication services.



PROJECT MANAGEMENT



DESIGN / ENGINEERING



FABRICATION



MAIN

218 20th Ave
Roseville, IL 61473
Phone: 309.774.4275

WEB: FTIINC.ORG

SOUTH DAKOTA

600 Stevens Port Dr., Ste 112
Dakota Dunes, SD 57049
Phone: 605.242.6070

OREGON

53583 Columbia River Hwy
Scappoose, OR 97056
Phone: 800.501.2683

*Free
Estimates*



*43 Years
Experience*

P.O. Box 108
Roseville, Illinois 61473
309-426-2012 309-221-9616
tbp@westil.net

Joe Thompson • President
(309) 426-2012 • Cell: (309) 221-9616

Spraying • Brushing • Waterblasting

Pole Buildings • Grain Bins • Barns • Commercial & Residential



ROSEVILLE LANES & DINER

HOMEMADE PIZZAS



JOIN A FALL LEAGUE

Women's.....Monday

Men's.....Wednesday

Mixed.....Thursday

*Call for Party Rates
Class Reunions
Rehersal Dinners
Banquets*

Lunch & Dinner Specials

Eat In or Carry Out

11 a.m. – 9 p.m. • Monday – Saturday

Call Brian, Linda or Mandy at (309) 426-2433



Mike & Tina Huston
Ryley, Carmyn & Nick
(309) 368-2615
Roseville, Illinois

DEPARTMENT H-A

JUNIOR BEEF CATTLE

Saturday • July 23

8:00 a.m.

Maximum Amount Offered: \$4,860.00

Entry Fee: \$15.00

SUPERINTENDENT

Mike Huston

COMMITTEE

Dan Byers Jeff Jensen Steve Killey Lynn Shimmin Kevin Killey
Kendall Shimmin Jon Strickler Kevin McCune Ryan McClure

- Weigh in Wednesday, July 20 at 6:00 p.m.
- All breeds must have health and registration papers which are due at weigh-in.
- Classes or breeds with low numbers may be combined at Superintendent's discretion.

■ *BEEF COMMITTEE HAS THE RIGHT TO REFUSE TO JUDGE ANY ANIMAL WHICH MIGHT POSSIBLY CAUSE BODILY HARM.*

PREMIUMS FOR CLASSES

1st	2nd	3rd
\$35.00	\$30.00	\$25.00

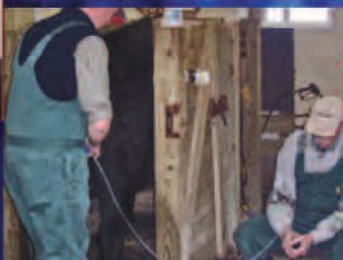
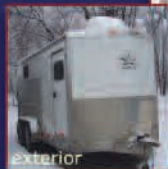
CLASSES

CROSSBRED

DEPT.	CATEGORY	CLASS	DESCRIPTION OF ENTRY
H-A	1	101	Crossbred Bull Calf, born after Jan. 1, of current year.
H-A	1	102	Crossbred Jr. Heifer Calf, born after Jan. 1 of current year.
H-A	1	103	Crossbred Sr. Heifer Calf, born between July 1 and Dec. 31, of previous year.
H-A	1	104	Crossbred Summer Yearling Heifer, born between May 1 and June 30, of previous year.
H-A	1	105	Crossbred Late Spring Yearling Heifer, born in April of previous year.
H-A	1	106	Crossbred Early Spring Yearling Heifer, born in March of previous year.
H-A	1	107	Crossbred Jr. Yearling Heifer, born between Jan. 1 and Feb. 28 of previous year.
H-A	1	108	Crossbred Sr. Yearling Heifer, born after July 1, 2012 and before Jan. 1, 2013.
H-A	1	109	Crossbred Cow, born before July 1, 2 years ago.

ANGUS

DEPT.	CATEGORY	CLASS	DESCRIPTION OF ENTRY
H-A	2	121	Angus Bull Calf, born after Jan. 1, of current year.
H-A	2	122	Angus Jr. Heifer Calf, born after Jan. 1 of current year.
H-A	2	123	Angus Sr. Heifer Calf, born between July 1 and Dec. 31, of previous year.
H-A	2	124	Angus Summer Yearling Heifer, born between May 1 and June 30, of previous year.
H-A	2	125	Angus Late Spring Yearling Heifer, born in April of previous year.
H-A	2	126	Angus Early Spring Yearling Heifer, born in March of previous year.
H-A	2	127	Angus Jr. Yearling Heifer, born between Jan. 1 and Feb. 28 of previous year.
H-A	2	128	Angus Sr. Yearling Heifer, born after July 1, 2012 and before Jan. 1, 2013.
H-A	2	129	Angus Cow, born before July 1, 2 years ago.



WESTWOOD

Embryo Services Inc.

westwood@westwoodembryo.com • www.westwoodembryo.com

Dr. Michael Pugh
DVM, MS

1760 Dakota Avenue
Waverly, IA 50677

[O] 319-352-5905

[F] 319-352-4162

Westwood Embryo Services, Inc. is a full service bovine reproduction provider specializing in embryo recovery and transfer.

Other Services: Donor housing, recipient housing, cooperator herd coordination, ultrasound pregnancy detection and fetal sexing, general reproduction consultation and now offering in vitro fertilization. Services can be preformed onsite or at our Waverly or Donnelson locations.

HEREFORD

DEPT.	CATEGORY	CLASS	DESCRIPTION OF ENTRY
H-A	3	131	Hereford Bull Calf, born after Jan. 1, of current year.
H-A	3	132	Hereford Jr. Heifer Calf, born after Jan. 1 of current year.
H-A	3	133	Hereford Sr. Heifer Calf, born between July 1 and Dec. 31, of previous year.
H-A	3	134	Hereford Summer Yearling Heifer, born between May 1 and June 30, of previous year.
H-A	3	135	Hereford Late Spring Yearling Heifer, born in April of previous year.
H-A	3	136	Hereford Early Spring Yearling Heifer, born in March of previous year.
H-A	3	137	Hereford Jr. Yearling Heifer, born between Jan. 1 and Feb. 28 of previous year.
H-A	3	138	Hereford Sr. Yearling Heifer, born after July 1, 2012 and before Jan. 1, 2013.
H-A	3	139	Hereford Cow, born before July 1, 2 years ago.

SHORTHORN

DEPT.	CATEGORY	CLASS	DESCRIPTION OF ENTRY
H-A	4	141	Shorthorn Bull Calf, born after Jan. 1, of current year.
H-A	4	142	Shorthorn Jr. Heifer Calf, born after Jan. 1 of current year.
H-A	4	143	Shorthorn Sr. Heifer Calf, born between July 1 and Dec. 31, of previous year.
H-A	4	144	Shorthorn Summer Yearling Heifer, born between May 1 and June 30, of previous year.
H-A	4	145	Shorthorn Late Spring Yearling Heifer, born in April of previous year.
H-A	4	146	Shorthorn Early Spring Yearling Heifer, born in March of previous year.
H-A	4	147	Shorthorn Jr. Yearling Heifer, born between Jan. 1 and Feb. 28 of previous year.
H-A	4	148	Shorthorn Sr. Yearling Heifer, born after July 1, 2012 and before Jan. 1, 2013.
H-A	4	149	Shorthorn Cow, born before July 1, 2 years ago.

SIMMENTAL

DEPT.	CATEGORY	CLASS	DESCRIPTION OF ENTRY
H-A	5	151	Simmental Bull Calf, born after Jan. 1, of current year.
H-A	5	152	Simmental Jr. Heifer Calf, born after Jan. 1 of current year.
H-A	5	153	Simmental Sr. Heifer Calf, born between July 1 and Dec. 31, of previous year.
H-A	5	154	Simmental Summer Yearling Heifer, born between May 1 and June 30, of previous year.
H-A	5	155	Simmental Late Spring Yearling Heifer, born in April of previous year.
H-A	5	156	Simmental Early Spring Yearling Heifer, born in March of previous year.
H-A	5	157	Simmental Jr. Yearling Heifer, born between Jan. 1 and Feb. 28 of previous year.
H-A	5	158	Simmental Sr. Yearling Heifer, born after July 1, 2012 and before Jan. 1, 2013.
H-A	5	159	Simmental Cow, born before July 1, 2 years ago.

ALL OTHER BREEDS

DEPT.	CATEGORY	CLASS	DESCRIPTION OF ENTRY
H-A	6	161	All Other Breeds Bull Calf, born after Jan. 1, of current year.
H-A	6	162	All Other Breeds Jr. Heifer Calf, born after Jan. 1 of current year.
H-A	6	163	All Other Breeds Sr. Heifer Calf, born between July 1 and Dec. 31, of previous year.
H-A	6	164	All Other Breeds Summer Yearling Heifer, born between May 1 and June 30, of previous year.
H-A	6	165	All Other Breeds Late Spring Yearling Heifer, born in April of previous year.
H-A	6	166	All Other Breeds Early Spring Yearling Heifer, born in March of previous year.
H-A	6	167	All Other Breeds Jr. Yearling Heifer, born between Jan. 1 and Feb. 28 of previous year.
H-A	6	168	All Other Breeds Sr. Yearling Heifer, born after July 1, 2012 and before Jan. 1, 2013.
H-A	6	169	All Other Breeds Cow, born before July 1, 2 years ago.

McGrew Feedlot Equipment



1237 10th Avenue
Avon, Illinois 61415

Phone: (309)775-4555

mcgrewfe@gmail.com

www.mcgrewfeedlot.com

Livestock Equipment Parts & Service
Silo/Harvestore Parts & Service

We are proud dealers of these quality brands...



"Like" us on Facebook!



WCF 12TH ANNUAL LIVESTOCK PREMIUM AUCTION

Thursday, July 21, 2016 • 6:00 p.m. • Hog Show Ring

Open to Warren County Beef, Sheep, Swine or Boer Goat Exhibitors
who show the same species in both 4H & Junior Shows at the fair.



Thank you to all the bidders & exhibitors who contributed to the 2015 WCF Livestock Premium Auction!

Morgan Lemley
Lora Livingston
Carmyn Huston
Kodiak Shimmin
Erica Harrell
Kim Jensen

Kaitlyn Livingston
Kolton Killey
Emma Coursey
Deek Still
Brandon Gilfillan
McKay Grohman

Schuyler Emerick
Logan Corzatt
Malia Killey
MaKayla Stewart
Ryley Huston
Sidney Stewart
Aubrey Killey

Casey Crum
Matt Lock
Kevin Lock
Randi Shimmin
Koby Killey
Trenton Emerick

Madison Corzatt
Sydney Emerick
Levi Meadows
Sydney Killey
Joe Crum
Alxis Meadows

ADM
Midwest Bank of Western Illinois
Birkey's
Painter Farm Equipment
West Central FS
1st Farm Credit Services
Security Savings
Martin Sullivan
Citizens National Bank

David & Editha Ray
McDonough Telephone Coop
Raritan State Bank
Randall & Jane Shimmin
Stewart Family Farms
Evelynn & Bruce Shimmin
CGB Enterprises
Tompkins State Bank
Liqui Grow

Bob Pratt
Brad & Robin Corzatt
Pioneer, Matt Mahoney
Kevin & DeNeene Killey
Elliott Bros. Seed
Shimmin Farms
Carthage Livestock
Dick & Mary Killey
Huston Veterinary Service

Paul & Margaret Crandall
Janet Stevenson
Jensen Farms
Alpha Feed Mill
Emerick Farms
Dan & Robyn Mowen
Van & Mary Kay Adkisson
Jeff & Heather Gregory
Richard Lock Family

RULES & REGULATIONS

- Exhibitors who participate in the Livestock Auction **MUST BE PRESENT** at the time of the auction to represent themselves and their animal. Animals will not be on display.
- Each exhibitor is limited to one entry in auction.
- All proceeds go to individual exhibitors. No commission will be taken by the Warren County Fair Association.
- Animals will remain the property of the exhibitor and will not become the property of the winning bidders.
- Successful exhibitors and bidders will be recognized in the following year's fair book.

If any questions call Kevin Killey at (309) 426-2431.

CARTHAGE

LIVESTOCK, INC.

Brent Lowderman

9:00 a.m. Fat Cattle
9:30 a.m. Slaughter Cows
10:00 a.m. Special Sales

Office: (217) 357-3314
Mobile: (309) 221-9621
www.carthagelivestock.com

P.O. Box 414, 1300 Wabash • Carthage, IL 62321

Custom Tub Grinding

Get The Most Back From Your Hay

PROCESSING IMPROVES:

Palatability &
Digestibility = Increased Productivity

Less Waste = Increased Profit

Doug Earp

Cell: (309) 255-6000 • Hm: (309) 734-5286
Monmouth, IL 61462

Dealing In New and Used Feeding Equipment



Portable Bunk Feeders

Bale Transports

Heavy Duty
Skid Feeders

**GOOD LUCK TO ALL THE
WARREN COUNTY FAIR EXHIBITORS!**



**Security
Savings** BANK

Monmouth

Member FDIC

Stronghurst

DEPARTMENT H-A

JUNIOR STEERS

Saturday • July 23

Immediately Following Junior Beef Show

Maximum Amount Offered: \$1,368.00

Entry Fee: \$15.00

SUPERINTENDENT

Mike Huston

COMMITTEE

Dan Byers Jeff Jensen Steve Killey Lynn Shimmin Kevin Killey
Kendall Shimmin Jon Strickler Kevin McCune Ryan McClure

- Weigh in Wednesday, July 20 at 6:00 p.m.
- All breeds must have health and registration papers which are due at weigh-in.
- Steers must be born after January 1, of the previous year.
- All steers must be mouthed.
- Steers will be classified according to weight regardless of breed.
- Number of classes will be determined after all entries are made.

PREMIUMS FOR CLASSES

1st	2nd	3rd
\$40.00	\$38.00	\$36.00

CLASSES

JUNIOR STEERS

Use **ONLY** the class number 180 to enter your Junior Steer.
After all the entries are made we will divide into weight classes.

DEPT.	CATEGORY	CLASS	DESCRIPTION OF ENTRY
H-A.....	7180.....	Junior Steers

H-A.....	7181.....	Weight Class 1
H-A.....	7182.....	Weight Class 2
H-A.....	7183.....	Weight Class 3
H-A.....	7184.....	Weight Class 4
H-A.....	7185.....	Weight Class 5
H-A.....	7186.....	Weight Class 6
H-A.....	7187.....	Weight Class 7
H-A.....	7188.....	Weight Class 8
H-A.....	7189.....	Weight Class 9
H-A.....	7190.....	Weight Class 10
H-A.....	7191.....	Weight Class 11
H-A.....	7192.....	Weight Class 12





Profit from our Experience



*Custom Application • Soil Testing • Dry Fertilizer Application
Grid Sampling • Post Application • Tissue Testing
VRT Application • Liquid Fertilizer Application*

***Crop
Production
Services***



***Biggsville
(309) 627-2397***

DEPARTMENT H-F

JUNIOR SHEEP

Friday • July 22
Immediately Following Junior Swine Show

Maximum Amount Offered: \$4,209.00

Entry Fee: \$10.00

SUPERINTENDENT

Lynn Shimmin

COMMITTEE

Dan Byers Jeff Jensen Steve Killey Mike Huston Kevin Killey
 Kendall Shimmin Jon Strickler Kevin McCune Ryan McClure

- Weigh in Wednesday, July 20 at 6:00 p.m.
- All breeds must have health and registration papers which are due at weigh-in. Must provide birthdates for ewe lambs.
- All lambs shown in Market Classes not eligible for breeding classes.
- Only 2 entries allowed per ewe lamb class, per breed.
- Crossbred rams not allowed to be shown.
- Classes or breeds with low numbers may be combined at Superintendent's discretion.

PREMIUMS FOR CLASSES

1st	2nd	3rd
\$25.00	\$23.00	\$21.00

CLASSES

DORSET

DEPT.	CATEGORY	CLASS	DESCRIPTION OF ENTRY
H-F	1	200	Dorset Ram Lamb–Fall (Sept. 1 – Dec. 31)
H-F	1	201	Dorset Ram Lamb–Spring (Born on or after Jan. 1)
H-F	1	202	Dorset Yearling Ewe
H-F	1	203	Dorset Ewe Lamb–Fall (Sept. 1 – Dec. 31)
H-F	1	204	Dorset Ewe Lamb–Early Spring (Jan. 1 – Feb. 15)
H-F	1	205	Dorset Ewe Lamb–Late Spring (Born on or after Feb. 16)
H-F	1	206	Dorset Pen of 2 Lambs

SUFFOLK

DEPT.	CATEGORY	CLASS	DESCRIPTION OF ENTRY
H-F	2	210	Suffolk Ram Lamb–Fall (Sept. 1 – Dec. 31)
H-F	2	211	Suffolk Ram Lamb–Spring (Born on or after Jan. 1)
H-F	2	212	Suffolk Yearling Ewe
H-F	2	213	Suffolk Ewe Lamb–Fall (Sept. 1 – Dec. 31)
H-F	2	214	Suffolk Ewe Lamb–Early Spring (Jan. 1 – Feb. 15)
H-F	2	215	Suffolk Ewe Lamb–Late Spring (Born on or after Feb. 16)
H-F	2	216	Suffolk Pen of 2 Lambs

We have your back.



You need a farm insurance company that knows the area and your individual needs.

We have protected area farmers for decades with quality insurance coverages and friendly, local service.

FARMUTUAL
Insurance



Thompson Insurance Agency, Inc

*Larry Thompson
Steve Killey
(309) 746-6283*

*P.O. Box 5
Raritan, IL 61471-0005
tiasteve@mtcnow.net*

Crop • Farm • Home • Auto • Business • Life • Health



SOUTHDOWN

DEPT.	CATEGORY	CLASS	DESCRIPTION OF ENTRY
H-F	3	220	Southdown Ram Lamb–Fall (Sept. 1 – Dec. 31)
H-F	3	221	Southdown Ram Lamb–Spring (Born on or after Jan. 1)
H-F	3	222	Southdown Yearling Ewe
H-F	3	223	Southdown Ewe Lamb–Fall (Sept. 1 – Dec. 31)
H-F	3	224	Southdown Ewe Lamb–Early Spring (Jan. 1 – Feb. 15)
H-F	3	225	Southdown Ewe Lamb–Late Spring (Born on or after Feb. 16)
H-F	3	226	Southdown Pen of 2 Lambs

ALL OTHERS

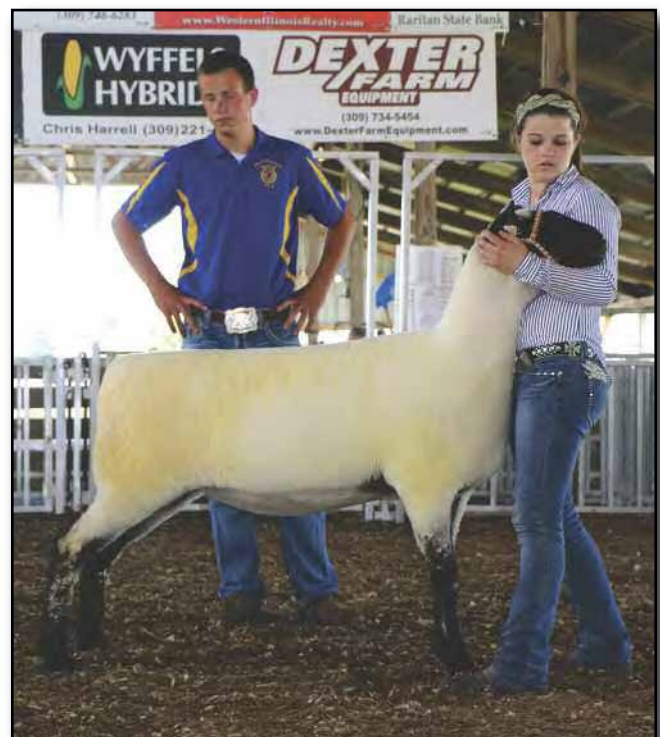
DEPT.	CATEGORY	CLASS	DESCRIPTION OF ENTRY
H-F	4	230	All Others Ram Lamb–Fall (Sept. 1 – Dec. 31)
H-F	4	231	All Others Ram Lamb–Spring (Born on or after Jan. 1)
H-F	4	232	All Others Yearling Ewe
H-F	4	233	All Others Ewe Lamb–Fall (Sept. 1 – Dec. 31)
H-F	4	234	All Others Ewe Lamb–Early Spring (Jan. 1 – Feb. 15)
H-F	4	235	All Others Ewe Lamb–Late Spring (Born on or after Feb. 16)
H-F	4	236	All Others Pen of 2 Lambs

CROSSBRED

DEPT.	CATEGORY	CLASS	DESCRIPTION OF ENTRY
H-F	5	240	Crossbred Yearling Ewe
H-F	5	241	Crossbred Ewe Lamb–Fall (Sept. 1 – Dec. 31)
H-F	5	242	Crossbred Ewe Lamb–Early Spring (Jan. 1 – Feb. 15)
H-F	5	243	Crossbred Ewe Lamb–Late Spring (Born on or after Feb. 16)
H-F	5	244	Crossbred Pen of 2 Lambs

HAMPSHIRE

DEPT.	CATEGORY	CLASS	DESCRIPTION OF ENTRY
H-F	6	250	Hampshire Ram Lamb–Fall (Sept. 1 – Dec. 31)
H-F	6	251	Hampshire Ram Lamb–Spring (Born on or after Jan. 1)
H-F	6	252	Hampshire Yearling Ewe Lamb
H-F	6	253	Hampshire Ewe Lamb–Fall (Sept. 1 – Dec. 31)
H-F	6	254	Hampshire Ewe Lamb–Early Spring (Jan. 1 – Feb. 15)
H-F	6	255	Hampshire Ewe Lamb–Late Spring (Born on or after Feb. 16)
H-F	6	256	Hampshire Pen of 2 Lambs





Fairview Sale Barn, Inc.

Illini Beef Marketing Services

FAIRVIEW, IL 61432

Sale Every Tuesday
10 a.m. – Fats, Slaughter Cows/Bulls
Sale Every Thursday – Noon – Livestock
10 a.m. – Farm Related • 10:30 a.m. – Hay, Straw

Bob Fidler
(309) 224-2327
(309) 789-6336
E-Mail: fidlerbob@yahoo.com

Laura Fidler-Office
(309) 778-2225
(309) 224-2225
Fax: (309) 778-2014
E-Mail: salebarn@winco.net

Jake Fidler
Sale Barn Manager
(309) 224-2226
(309) 789-6232

Bob Garber
IBMS Mgr.
(309) 696-9798
(309) 367-2809

Ray Johnson
(309) 337-6029

www.fairviewsalebarn.com

CELEBRATING FAIR DAYS

DAILY
REVIEW ATLAS

ROSEVILLE INDEPENDENT

(309) 734-3176 or
(309) 833-2345

www.reviewatlas.com
www.mcdonoughvoice.com



*Proud of our past -
positioned for the future!*

Roseville • Monmouth
Stronghurst • Little York • Rozetta

*Best wishes to the
Warren County Fair!*

The New Image

HAIRSTYLING SALON

Color • Perms • Cuts • Style
Tanning • Pedicures • Manicures

STYLISTS

Sandy Campbell
Whitney Thurman & Bailey Carlson

www.thenewimagehairstylingsalon.com



Like us on Facebook



Roseville, IL 61473 • (309) 426-2458



MONTADALE

DEPT.	CATEGORY	CLASS	DESCRIPTION OF ENTRY
H-F	7260	Montadale Ram Lamb–Fall (Sept. 1 – Dec. 31)
H-F	7261	Montadale Ram Lamb–Spring (Born on or after Jan. 1)
H-F	7262	Montadale Yearling Ewe Lamb
H-F	7263	Montadale Ewe Lamb–Fall (Sept. 1 – Dec. 31)
H-F	7264	Montadale Ewe Lamb–Early Spring (Jan. 1 – Feb. 15)
H-F	7265	Montadale Ewe Lamb–Late Spring (Born on or after Feb. 16)
H-F	7266	Montadale Pen of 2 Lambs

SHROPSHIRE

DEPT.	CATEGORY	CLASS	DESCRIPTION OF ENTRY
H-F	8270	Shropshire Ram Lamb–Fall (Sept. 1 – Dec. 31)
H-F	8271	Shropshire Ram Lamb–Spring (Born on or after Jan. 1)
H-F	8272	Shropshire Yearling Ewe Lamb
H-F	8273	Shropshire Ewe Lamb–Fall (Sept. 1 – Dec. 31)
H-F	8274	Shropshire Ewe Lamb–Early Spring (Jan. 1 – Feb. 15)
H-F	8275	Shropshire Ewe Lamb–Late Spring (Born on or after Feb. 16)
H-F	8276	Shropshire Pen of 2 Lambs

MARKET WETHER

Use ONLY the class number 280 to enter your Market Wether.
After all the entries are made we will divide into classes.

DEPT.	CATEGORY	CLASS	DESCRIPTION OF ENTRY
-------	----------	-------	----------------------

H-F	9280	Market Wether
------------	----------	-----------------	---------------

H-F	9281	Market Wether 1
------------	----------	-----------------	-----------------

H-F	9282	Market Wether 2
------------	----------	-----------------	-----------------

H-F	9283	Market Wether 3
------------	----------	-----------------	-----------------

Use ONLY the class number 290 to enter your Pen Market Wether. After all the entries are made we will divide into classes.

DEPT.	CATEGORY	CLASS	DESCRIPTION OF ENTRY
-------	----------	-------	----------------------

H-F	10290	Pen Market Wether
------------	-----------	-----------------	-------------------

H-F	10291	Pen Market Wether 1
------------	-----------	-----------------	---------------------

H-F	10292	Pen Market Wether 2
------------	-----------	-----------------	---------------------

*Number of Market Wether Classes
Will Be Determined After
All Entries Are Made*



Custom Liquid Sidedressing

Cash Rent

Crop Share



HUSTON ***FARMS***

Rick Huston

(309) 337-7758

**440 US Highway 67
Roseville, IL 61473
hustonrick58@gmail.com**



DEPARTMENT H-G

JUNIOR BARROWS

Friday • July 22
8:00 a.m.

Maximum Amount Offered: \$1,458.00

Entry Fee: \$15.00

SUPERINTENDENT

Kevin Killey

COMMITTEE

Dan Byers Jeff Jensen Steve Killey Mike Huston Lynn Shimmin
Kendall Shimmin Jon Strickler Kevin McCune Ryan McClure

- Weigh in Wednesday, July 20 at 6:00 p.m.
- All breeds must have health and registration papers which are due at weigh-in.
- Barrows will be weighed and divided into Light, Medium and Heavy Weight Divisions.
- Number of classes will be determined after all entries are made.
- No entry changes after card has been turned in at weigh in.

PREMIUMS FOR CLASSES

1st	2nd	3rd
\$30.00	\$27.00	\$24.00

CLASSES

SINGLE MARKET BARROW

Use ONLY the class number 350 to enter your Single Market Barrow. After all the entries are made we will divide into classes.

DEPT.	CATEGORY	CLASS	DESCRIPTION OF ENTRY
H-G	5	350	Single Market Barrows

H-G	5	351	Single Market Barrow 1
H-G	5	352	Single Market Barrow 2
H-G	5	353	Single Market Barrow 3
H-G	5	354	Single Market Barrow 4
H-G	5	355	Single Market Barrow 5
H-G	5	356	Single Market Barrow 6
H-G	5	357	Single Market Barrow 7
H-G	5	358	Single Market Barrow 8
H-G	5	359	Single Market Barrow 9
H-G	5	360	Single Market Barrow 10
H-G	5	361	Single Market Barrow 11
H-G	5	362	Single Market Barrow 12

PAIR OF MARKET BARROWS

Use ONLY the class number 370 to enter your Pair of Market Barrows. After all the entries are made we will divide into classes.

DEPT.	CATEGORY	CLASS	DESCRIPTION OF ENTRY
H-G	6	370	Pair of Market Barrows

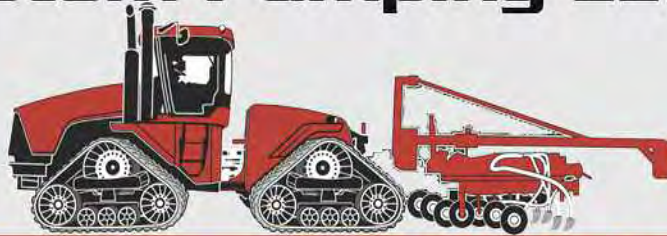
H-G	6	371	Pair of Market Barrows 1
H-G	6	372	Pair of Market Barrows 2
H-G	6	373	Pair of Market Barrows 3
H-G	6	374	Pair of Market Barrows 4
H-G	6	375	Pair of Market Barrows 5
H-G	6	376	Pair of Market Barrows 6



McClure

— Custom Pumping LLC —

**Complete
Drag Line
Application**



**Manure
Hauling**

**541 160th Avenue
Kirkwood, Illinois 61447**

**Merlin (309) 255-1458
Ryan (309) 255-6700**

**MOC 7 Manure Pit Treatment Dealer
www.mcclurecustompumping.com**

ANDERSON **Custom Baling**

Jim & Mike Anderson

(309) 337-1674 or (309) 426-2589

1097 - 90th Street • Roseville, IL 61473

DEPARTMENT H-G

JUNIOR SWINE

Friday • July 22

Following the Junior Barrow Show

Maximum Amount Offered: \$1,425.00

Entry Fee: \$10.00

SUPERINTENDENT

Kevin Killey

COMMITTEE

Dan Byers Jeff Jensen Steve Killey Mike Huston Lynn Shimmin
Kendall Shimmin Jon Strickler Kevin McCune Ryan McClure

- Weigh in Wednesday, July 20 at 6:00 p.m.
- All breeds must have health and registration papers which are due at weigh-in.
- A litter shall consist of animals farrowed by one sow on or after January 1, of the current year and may include not more than one barrow. It may consist of three gilts. Single gilts do not need to be part of the litter. They must have been owned by the exhibitor since June 1, of the current year.
- Number of Crossbred Gilt classes will be determined by weight after all entries are made.
- Exhibitors may show more than two (2) crossbred gilts per class.
- **NO BOARS WILL BE SHOWN AT THIS YEARS FAIR.**
- All pure bred hogs shown should be farrowed after Jan. 1 of current year.
- Classes or breeds with low numbers may be combined at Superintendent's discretion.
- No entry changes after card has been turned in at weigh in.

PREMIUMS FOR CLASSES

1st	2nd	3rd
\$27.00	\$25.00	\$23.00

CLASSES

JUNIOR SWINE

DEPT.	CATEGORY	CLASS	DESCRIPTION OF ENTRY
H-G 1300Hampshire Gilt
H-G 1301Hampshire Litter
H-G 1302Duroc Gilt
H-G 1303Duroc Litter
H-G 1304Black Polands Gilt
H-G 1305Black Polands Litter
H-G 1306Spotted Gilt
H-G 1307Spotted Litter
H-G 1308Chester Gilt
H-G 1309Chester Litter
H-G 1310Yorkshire Gilt
H-G 1311Yorkshire Litter
H-G 1312Landrace Gilt
H-G 1313Landrace Litter

Use ONLY the class number 320 to enter your All Other Breeds Gilt. After all the enteries are made we will divide into classes.

DEPT.	CATEGORY	CLASS	DESCRIPTION OF ENTRY
H-G 2320All Other Breeds Gilt

H-G 2321.....All Other Breeds Gilt 1
H-G 2322.....All Other Breeds Gilt 2
H-G 2323.....All Other Breeds Gilt 3
H-G 2324.....All Other Breeds Gilt 4

DEPT.	CATEGORY	CLASS	DESCRIPTION OF ENTRY
H-G 3330All Other Breeds Litter

2016

WARREN COUNTY

AGRICULTURAL FAIR

MUD VOLLEYBALL

Sunday • July 17, 2016 • 1:00 p.m. • In Horse Arena

Senior Division: 1st Place \$200 • 2nd Place \$100 • 3rd Place \$60

Junior Division: 1st Place \$60

Entry Fee: \$60.00 Per Team

SUPERINTENDENT

Steve Killey (309) 331-4970 tiasteve@mtcnnow.net

1. YOU MUST ENTER THE MUD PIT WITH SHOES ON!
& HAVE THEM ON AT ALL TIMES. (USE DUCT TAPE)

2. There must be at least 3 women on the court at all times.

3. Rally scoring. Games to 20.

4. Double elimination.

5. You have to be on call, on deck and in pit when announcer calls. If not in the pit when the calls come, game will be forfeited!

6. Junior Division: Junior High age and younger.
Senior Division: Freshman in High School and older.

7. Junior Division: 1st Place: \$60.

8. Senior Division: 1st Place: \$200 and trophy, 2nd Place: \$100 and trophy, 3rd Place: \$60 and trophy.

9. THERE IS A \$60.00 ENTRY FEE THAT MUST BE PAID AT TIME OF REGISTRATION.

10. **Team registration deadline is July 16th.**
All Entry Forms should be mailed to:

Warren County Fair
P.O. Box 136
Roseville IL, 61473

OR Email to: tiasteve@mtcnnow.net

You must have a Team Name, Team Captain and a complete list of players. **A RELEASE FORM MUST BE SIGNED BY EVERY PLAYER BEFORE PLAYING.**

11. **DO NOT USE SHOWERS IN BATHROOMS!**
A washing station will be provided.

12. **NO OUTSIDE ALCOHOLIC BEVERAGES ALLOWED.**

**FOOD & BEER CONCESSIONS
WILL BE OPEN!**

***Located Over By
The Horse Arena/Livestock Area***



2015 - 1st Place

WIU Volleyball Team



WARREN COUNTY

AGRICULTURAL FAIR

MUD VOLLEYBALL

ENTRY FORM

Team registration deadline is July 16th.

Circle One:

Junior Division (Jr. High & Younger)

Senior Division (HS Freshman & Older)

Team Name: _____

Captain Name: _____

Contact Name: _____

Contact Phone Number: _____

Player Name: _____ Signature _____

Player Name: _____ Signature _____

Player Name: _____ Signature _____

Player Name: _____ Signature _____

Player Name: _____ Signature _____

Player Name: _____ Signature _____

Player Name: _____ Signature _____

Player Name: _____ Signature _____

Player Name: _____ Signature _____

Player Name: _____ Signature _____

Player Name: _____ Signature _____

The Warren County Fair and the Members of the Board are not responsible for any accidents that may occur during play on the volleyball courts or on the Warren County Fairgrounds at anytime.

DEPARTMENT H-U

JUNIOR BOER GOATS

Friday • July 22
Immediately Following the Junior Sheep Show

Premiums Offered: \$780.00

Entry Fee: \$10.00

SUPERINTENDENT

Kendall Shimmin

ASSISTANT

Marsha McCleary

PREMIUMS FOR CLASSES

1st	2nd	3rd
\$22.00	\$20.00	\$18.00

CLASSES

PERCENTAGE OR HALF-BLOOD DOES

DEPT.	CATEGORY	CLASS	DESCRIPTION OF ENTRY
H-U.....	14000 months to under 6 months
H-U.....	14016 months to under 12 months
H-U.....	140212 months to under 24 months
H-U.....	14032 years and over

FULL BLOOD/PUREBRED DOES

DEPT.	CATEGORY	CLASS	DESCRIPTION OF ENTRY
H-U.....	24100 months to under 6 months
H-U.....	24116 months to under 12 months
H-U.....	241212 months to under 24 months
H-U.....	24132 years and over

FULL BLOOD/PUREBRED BUCKS

DEPT.	CATEGORY	CLASS	DESCRIPTION OF ENTRY
H-U.....	34200 months to under 6 months
H-U.....	34216 months to under 12 months

JUNIOR WETHERS

Use **ONLY** the class number 430 to enter your Wether. After all the entries are made we will divide into classes.

DEPT.	CATEGORY	CLASS	DESCRIPTION OF ENTRY
H-U.....	4430Junior Wether

H-U..... 4431Wether 1

H-U..... 4432Wether 2

H-U..... 4433Wether 3



RULES AND REGULATIONS FOR JUNIOR SHOW

- **ENTRY FEE:** \$10 will be deducted from winnings (*do not remit*)
- **PEN FEE:** \$7 per pen (4 large or 6 small animals per pen). Tack pens must be paid for!
- **Scrapie Flock ID (previously the Scrapie Premise ID) is required for all goat owners. In Illinois, call (217) 241-6689. Other States call your respective state veterinarian's office.**
- National Animal Identification System (NAIS) Premise ID can be acquired by contacting USDA, APHIS. For out-of-state goats entering Illinois, call (217) 782-4944 within 72 hours of planned entry, for the permit # needed to enter Illinois. Permits are available at this number 24 hours a day, seven days a week.
- Wethers will be weighed on Wednesday at 5:00 p.m. and will be divided into classes by weight. There will be a 30 lb. minimum weight and no maximum weight. Show officials or appointees will have the final say on classes and will have the right to combine classes at their discretion.
- All breeds must have health and registration papers which are due at weigh-in.
- Wethers must be castrated males and have their milk teeth in place. Wethers with missing teeth or permanent adult teeth coming in will be disqualified.
- No dogs, other than service animals, will be allowed in the barns.
- All animals must be shown with a collar. A short lead is permitted.



**Kirkwood-Stronghurst
Veterinary Clinic, P.C.**

Dr. Beth McBroom Dr. Mark Hall

www.ksvetclinic.com

215 South Harding Junc. of Hwy 94 & Carman Road
Kirkwood, IL 61447-0129 Stronghurst, IL 61480
(309) 768-2121 (309) 924-1241

ACM
A.C. McCARTNEY
Serving Customers Since 1950!

Durand, IL 815-248-2161	Wataga, IL 309-375-6661	Carthage, IL 217-357-2167	Mt. Sterling, IL 217-773-3339
----------------------------	----------------------------	------------------------------	----------------------------------






www.acmccartney.com



1526 90th Street
MONMOUTH, ILLINOIS 61462
TELEPHONE 309-734-7219

Compliments of

JDA Trucking

Jerry Adkisson & Family

George Hennenfent

ATTORNEY AT LAW

120 N. Main Street • Roseville, Illinois 61473
Telephone: (309) 426-2176 • Fax: (309) 426-2177

Liqui Grow
A Division of Twin State, Inc.

BALANCED FERTILIZERS

Ray Golden
TJ Stevenson
Jon Arnold

490 State Highway 116 • Roseville, IL 61473-9747
Office: (309) 426-2638 • Toll Free: (888) 632-6032

Monmouth Chiropractic Clinic

DR. ALAN E. PHILLIPS D.C.

■ Physical Therapy	■ Pediatric Care
■ Whiplash	■ Headaches
■ Sciatica	■ Arthritis

We accept most insurance.

(309) 734-7050
312 East Archer Avenue, Monmouth

W. SCOTT JONES, D.D.S.

(309) 426-2991

<i>Office Hours By Appointment Only</i>	<i>The Roseville Clinic 235 East Penn Ave. Roseville, IL 61473</i>
---	--



DEPARTMENT K

HORTICULTURE

Thursday • July 21

1:00 p.m.

**Open for Public
Viewing from
1 – 5 p.m.**

Amount Offered: \$1,134.00

Entry Fee: \$10.00

Judging Held at East Shelter House Across From Fair Office at Eldridge Park

SUPERINTENDENT

Amy Thompson
(309) 426-2012

RULES & REGULATIONS

- Entries open only to residents of Warren and surrounding counties regardless of age.
- Entries made and placed from Noon - 1:00 p.m., the day of show.
- All entries must be grown by the exhibitor.
- Exhibitors are limited to one entry per class.
- Specimens will be judged on quality and uniformity (if more than one item is required).
- All entries must be fresh not frozen.
- Entries should be free of dirt, cuts, bruises and defects as well as insect or disease free. No waxes or oils may be used.
- Trim tops only where indicated and to the length stated. Do not over-scrub vegetables. Clean using a soft cloth and wash gently.
- Display exhibits on a foam or plastic plate (NO paper plates). Do not cover.
- Not responsible for accidents or lost items.
- All entries will be on display until 5:00 p.m. Projects are to be **picked up at 5:00 p.m.** Exhibitors unable to pick up exhibits should make alternate arrangements. **The shelter house must be emptied by 5:30 p.m.** Any unclaimed entries will be discarded.
- **Premium checks may be picked up at the fair office on Saturday, July 23th, after 6:00 p.m. If you can not make it at this time please make other arrangements. If you would like your check mailed to you, you must bring a self-addressed stamped envelope to the Fair Office the day of your event.**

CLASSES

ENTRY FEE: \$10 (*Entry fees will be deducted from winners only.*)

PREMIUMS OFFERED: 1st \$15, 2nd \$14, 3rd \$13

RIBBONS OFFERED: Best of Show

Fruit

DEPT.	CATEGORY	CLASS	DESCRIPTION OF ENTRY
K	1	400	Apples – 3 (any variety)
K	1	401	Raspberries – 5
K	1	402	Blackberries – 5
K	1	403	Grapes – Cluster up to 10

Vegetables

DEPT.	CATEGORY	CLASS	DESCRIPTION OF ENTRY
K	2	415	Green Beans – 5
K	2	416	Beets – 3, trim tops to 1"
K	2	417	Turnips – 2, trim tops to 1"
K	2	418	Carrots – 3, trim tops to 1"
K	2	419	Cucumbers – 3
K	2	420	Onions – 3, trim tops to 1"
K	2	421	Green Peppers – 3

K	2	422	Other Peppers – 3
K	2	423	Potatoes – 3
K	2	424	Zucchini Squash – 2, under 12"
K	2	425	Sweet Corn – 3 ears in husks
K	2	426	Red Tomatoes – 3
K	2	427	Cherry Tomatoes – 4
K	2	428	Kholarabi – 2
K	2	429	Cabbage – 1
K	2	430	Eggplant – 2
K	2	431	Largest Potato
K	2	432	Largest Tomato (may be green)
K	2	433	Fluke of Nature (most unusual vegetable or fruit)

Herbs

DEPT.	CATEGORY	CLASS	DESCRIPTION OF ENTRY
Herbs can be potted.			
K	3	450	Basil
K	3	451	Parsley
K	3	452	Cilantro
K	3	453	Dill

I CHOOSE



www.WesternIllinoisRealty.com

Open Show

DEPARTMENT I

FLORICULTURE

Thursday • July 21

10:00 a.m.

Amount Offered: \$2,688.00

Entry Fee: \$10.00

(Entry fee will be deducted from each winning entry.)

Judging Held at East Shelter House Across From Fair Office at Eldridge Park

SUPERINTENDENT

LaJune Carlson

RULES & REGULATIONS

- Entries open only to residents of Warren County.
- Entries made and placed from 7:30 - 9:30 a.m., the day of show.
- Judging as soon as possible after 10:00 a.m.
- Exhibitors required to grow flowers shown by them.
- Only amateurs may enter in Arrangements classes #540-558.
- No Exhibitor to make more than one entry in each class.
- It shall be the exhibitor's responsibility to see that the entries are properly entered and tags filled out by the exhibitor, placed on the entry.
- If an entry is entered in the wrong category, it will automatically be disqualified. There will be no changing.
- Specimens to be judged on flower quality only.
- Not responsible for accidents or lost items.
- All floral specimens & projects will be on display until 5:00 p.m. that evening in the shelter house where they are judged. Projects are to be **picked up at 5:00 p.m.** Exhibitors unable to pick up exhibits should make alternate arrangements.
The shelter house must be emptied by 5:30 p.m. Any unclaimed entries will be discarded.
- **Premium checks may be picked up at the fair office on Saturday, July 23rd, after 6:00 p.m. If you can not make it at this time please make other arrangements. If you would like your check mailed to you, you must bring a self-addressed stamped envelope to the Fair Office the day of your event.**

JUDGING OF ARRANGEMENTS WILL BE AS FOLLOWS:

1. Perfection of material
2. Arrangement
3. Color Harmony
4. Relation of container to the material

Open for Public Viewing from 1 – 5 p.m.



PREMIUMS & TROPHIES

1st	2nd	3rd
\$15.00	\$14.00	\$13.00

Trophies For The Flower Show Are Donated By...

(Best of Show) – In Memory of Her Mother Marjorie Lewis, by Robert & LaJune Carlson

First Runner Up – In Memory of Lucile McVey, by Her Family

Senior Champion Age 65 – In Memory of Lucille Hall, by Steve Hall & Alice Jury

CLASSES

SPECIMENS

Three or four stemmed specimens in a vase.

DEPT.	CATEGORY	CLASS	DESCRIPTION OF ENTRY
L	1	500	Ageratum
L	1	501	Annuals, not listed
L	1	502	Dahlia
L	1	503	Cone Flowers
L	1	504	Celosia, plume (crested)
L	1	505	Cosmos
L	1	506	Marigold – small
L	1	507	Marigold – large
L	1	508	Lilies – day
L	1	509	Lilies – oriental
L	1	510	Daisies
L	1	511	Gaillardias
L	1	512	Gladiolus, 1 color/blend
L	1	513	Best single glad
L	1	514	Pansies
L	1	515	Perennials, not listed
L	1	516	Petunias, single
L	1	517	Petunias, double
L	1	518	Phlox, perennials
L	1	519	Roses, tea
L	1	520	Best single rose
L	1	521	Salvia
L	1	522	Snapdragons
L	1	523	Zinnias – small
L	1	524	Zinnias – large
L	1	525	Hydrangea – 1 stem

ARRANGEMENTS

An arrangement of flowers in category.
Only amateurs may enter in Arrangements Classes.

DEPT.	CATEGORY	CLASS	DESCRIPTION OF ENTRY
L	2	540	Church Bouquet
L	2	541	Coffee Table
L	2	542	Dining Table
L	2	543	Flower in unusual container
L	2	544	Marigold, large
L	2	545	Marigold, mixed size/color
L	2	546	Marigold, small
L	2	547	Miniature, not over 4"
L	2	548	Mixed green & white
L	2	549	Mixed lavender & white
L	2	550	Mixed pink
L	2	551	Mixed red, white & blue
L	2	552	Mixed yellow (no orange)
L	2	553	Wild flowers
L	2	554	Zinnia large
L	2	555	Zinnia, small
L	2	556	Zinnia, mixed size & color
L	2	557	Christmas Arrangement
L	2	558	Easter Arrangement

POTTED PLANTS

DEPT.	CATEGORY	CLASS	DESCRIPTION OF ENTRY
L	3	570	Begonia, any kind
L	3	571	Coleus
L	3	572	Geranium
L	3	573	Succulents
L	3	574	Hanging Baskets
L	3	575	Potted Ivy
L	3	576	Others Not Listed

CLASSES



SPECIMENS • 65 YEARS +

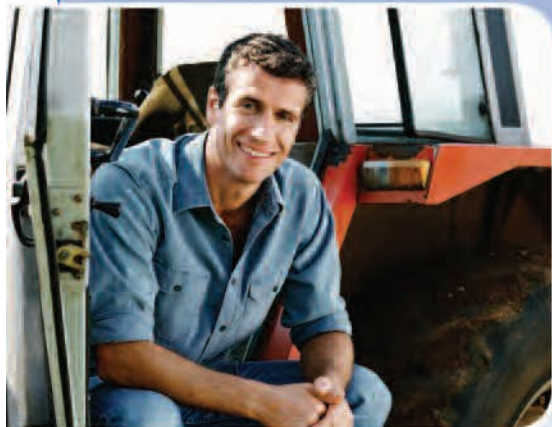
DEPT.	CATEGORY	CLASS	DESCRIPTION OF ENTRY
L	4	580	Cosmos
L	4	581	Snapdragons
L	4	582	Roses
L	4	583	Gladiolus
L	4	584	Pansies, Mixed Colors
L	4	585	Others Not Listed

ARRANGEMENTS • 65 YEARS +

DEPT.	CATEGORY	CLASS	DESCRIPTION OF ENTRY
L	5	590	Dining Room Arrangement
L	5	591	Marigold Arrangement
L	5	592	Mixed Zinnia Arrangement

POTTED PLANTS • 65 YEARS +

DEPT.	CATEGORY	CLASS	DESCRIPTION OF ENTRY
L	6	595	Hanging Baskets (Potted)
L	6	596	Begonia (Potted)
L	6	597	Other (Potted)



www.Unland.com

Insuring Your
Peace of Mind
Since 1941

PERSONAL • HOME • AUTO • BUSINESS • FARM



UNLAND
INSURANCE & BENEFITS

Citizens Insurance Services

100 S. Main St., Roseville • (309) 426-2442

127 S. Side Square, Macomb • (309) 837-0609





DEPARTMENT M

TEXTILES, CRAFTS & FINE ARTS

Friday • July 22

9:00 a.m.

Amount Offered: \$1,890.00

Judging Held at East Shelter House Across From Fair Office at Eldridge Park

SUPERINTENDENT

Amy Thompson

(309) 426-2012

ENTRY FEE: \$10 (*Entry fees will be deducted from winners only.*)

PREMIUMS OFFERED: 1st \$15, 2nd \$14, 3rd \$13

RIBBONS OFFERED: Best of Show

Textiles & Stitchery

DEPT.	CATEGORY	CLASS	DESCRIPTION OF ENTRY
M	1	600	Hand Stitched Quilted Article
M	1	601	Machine Stitched Quilted Article
M	1	602	Crocheted (blanket)
M	1	603	Crocheted (garment)
M	1	604	Crocheted Article (any other)
M	1	605	Knitted (blanket)
M	1	606	Knitted (holiday decoration)
M	1	607	Knitted (garment)
M	1	608	Knitted Article (any other)
M	1	609	Counted Cross Stitch (hardanger)
M	1	610	Counted Cross Stitch (all other)
M	1	611	Embroidered Article (stamped)
M	1	612	Machine Embroidered Article
M	1	613	Needlepoint
M	1	614	Sewing (slacks or skirt)
M	1	615	Sewing (blouse or jacket)
M	1	616	Sewing (dress)
M	1	617	Sewing (sleepwear)
M	1	618	Sewing (any other article not listed)
M	1	619	Weaving

Crafts

DEPT.	CATEGORY	CLASS	DESCRIPTION OF ENTRY
M	2	630	Scrapbooking (open book—2 pages)
M	2	631	Scrapbooking (full book)
M	2	632	Handmade Greeting Card
M	2	633	Stamp Art Craft
M	2	634	Beaded Craft
M	2	635	Leather Craft
M	2	636	Glass Etching

Fine Arts (*Matted ONLY, NO FRAME*)

DEPT.	CATEGORY	CLASS	DESCRIPTION OF ENTRY
M	3	650	Color Photography (people)
M	3	651	Color Photography (landscape)
M	3	652	Color Photography (flowers)
M	3	653	Color Photography (animals)
M	3	654	Color Photography (digitally altered)
M	3	655	Black & White Photography (people)
M	3	656	Black & White Photography (landscape)
M	3	657	Black & White Photography (animals)
M	3	658	Black & White Photography (digitally altered)
M	3	659	Sepia Photography
M	3	660	Drawing & Sketching (any medium)
M	3	661	Painting (landscape)
M	3	662	Painting (portrait)
M	3	663	Painting (still life)
M	3	664	Painting (any other)

Woodworking

DEPT.	CATEGORY	CLASS	DESCRIPTION OF ENTRY
M	4	680	Item With Doors (hinges) or Drawers
M	4	681	Item That Has Been Turned
M	4	682	All Other Items

Open for Public Viewing from 1 – 5 p.m.



DEPARTMENT 0

DAIRY, APIARY & CULINARY

Friday • July 22

9:00 a.m.

Amount Offered: \$1,134.00

Judging Held at East Shelter House Across From Fair Office at Eldridge Park

SUPERINTENDENT

Amy Thompson
(309) 426-2012

ENTRY FEE: \$10 (*Entry fees will be deducted from winners only.*)

PREMIUMS OFFERED: 1st \$15, 2nd \$14, 3rd \$13

RIBBONS OFFERED: Best of Show

- Exhibitors are limited to one entry per class.
- A single project can only be entered into a single category not multiple categories.
- The entry fees are deducted from winnings.
- The judge may disqualify any item improperly entered.
- All entries must be made by the exhibitor.
- Junior Show exhibitors may enter the Open Show, but exhibits cannot be carried over from the Junior Show.
- Open to all residents of Warren and surrounding counties regardless of age.
- **Check in time for exhibits is 7:30 – 9:00 a.m.**
- The building will be closed for judging and no late entries can be accepted.
- Display exhibits on appropriate sized **FOAM OR PLASTIC PLATE IN A ZIPLOCK BAG. NO PAPER PLATES. NO PLASTIC WRAP.** Put a single piece of exhibit in a separate ziplock bag. Attach entry tag securely to the bag.
- All exhibitors **MUST** have their social security number to enter this show. This will be enforced.
- All entries must have the exact number of items as indicated.
- Foods may be discarded after judging if there is spoilage.
- All items will be judged in the category in which the exhibitor has placed them. No exceptions.
- Superintendents' and judges' decisions are final.
- Not responsible for accidents or breakage.
- All entries will be on display until 5:00 p.m. that evening in the shelter house. Projects are to be **picked up at 5:00 p.m.** Exhibitors unable to pick up exhibits should make alternate arrangements. **The shelter house must be emptied by 5:30 p.m.** Any unclaimed entries will be discarded.
- **Premium checks may be picked up at the fair office on Saturday, July 23rd, after 5:00 p.m. If you can not make it at this time please make other arrangements. If you would like your check mailed to you, you must bring a self-addressed stamped envelope to the Fair Office the day of your event.**

CLASSES

CAKES

Displayed on 9" foam or plastic plate.

DEPT.	CATEGORY	CLASS	DESCRIP. OF ENTRY & AMOUNT TO ENTER
0	1	700	Chocolate, frosted – 1/4 of 8 or 9 inch layer + 1 slice (2 or more layers)
0	1	701	Angel food (any flavor), unfrosted – 1/4 of 8 or 9 inch layer + 1 slice
0	1	702	Cake Mix with Additions, frosted – 1/4 of 8 or 9 inch of layer + slice
*0	1	703	Decorated Cake – Judged on appearance only. <u>Display in Box.</u>
0	1	704	Cupcakes – 3+1

PIES

Displayed on 6" foam or plastic plate.

DEPT.	CATEGORY	CLASS	DESCRIP. OF ENTRY & AMOUNT TO ENTER
0	2	720	Cherry – 1 slice
0	2	721	Other Fruit – 1 slice (label)

Open for Public Viewing from 1 – 5 p.m.

CLASSES

COOKIES

*(No mixes) Displayed on 6" foam or plastic plate.
State on back of entry tag what kind of bar cookie.*

DEPT.	CATEGORY	CLASS	DESCRIP. OF ENTRY & AMOUNT TO ENTER
0	3	730	Spoon Drop (Chocolate Chip) - 3+1
0	3	731	Spoon Drop (Other) - 3+1
0	3	732	Rolled or Shaped by Hand (Sugar, Refrigerator, etc.) - 3+1
0	3	733	Bars - 3+1

YEAST BREADS

Displayed on 6" foam or plastic plate.

DEPT.	CATEGORY	CLASS	DESCRIP. OF ENTRY & AMOUNT TO ENTER
0	4	740	Cinnamon Rolls - 3+1
0	4	741	White Bread - 1 center slice + 1 slice
0	4	742	Bread Machine Bread - any variety - 1 center slice + 1 slice

QUICK BREADS

Displayed on 6" foam or plastic plate.

DEPT.	CATEGORY	CLASS	DESCRIP. OF ENTRY & AMOUNT TO ENTER
0	5	750	Coffee Cake - 4" square + 1 slice
0	5	751	Loaf (Banana) - 1 slice + 1
0	5	752	Loaf (Other) - 1 slice + 1
0	5	753	Muffins - 3+1

CANDY

Displayed on 6" foam or plastic plate.

DEPT.	CATEGORY	CLASS	DESCRIP. OF ENTRY & AMOUNT TO ENTER
0	6	760	Chocolate Fudge - 1" squares - 3+1
0	6	761	Other Candy - 3+1
0	6	762	Cakepops - 3+1

CANNING & PRESERVING

DEPT.	CATEGORY	CLASS	DESCRIP. OF ENTRY & AMOUNT TO ENTER
0	7	770	Vegetable Canning *
0	7	771	Fruit Canning *
0	7	772	Pickles & Relishes *
0	7	773	Salsa *
0	7	774	Jams/Jellies

* Pint or Quart. Indicate Contents on Entry Tag.

SPECIAL CATEGORY

FAIR BOARD PRESIDENT'S FAVORITE

DEPT.	CATEGORY	CLASS	DESCRIP. OF ENTRY & AMOUNT TO ENTER
0	8	780	President's Favorite: Chocolate Cake

Fair Board President's Favorite

Based on our current Fair Board President's (**Dan Byers**) Favorite Cookie, Cake, Pie, etc.

Winners from the Open & Junior-Dairy, Apiary & Culinary Shows

will receive a \$25 prize donated by **Thompson Brothers Painting**.

Entrants are limited to one entry in either the Junior or the Open Show, not both.

*The winning pies from both the Open and Junior Show will be sold at the
WCF Food Auction and the Exhibitor will receive a \$25 cash prize.*

Dan Byers' Favorite Dessert is... Chocolate Cake!

for the Open Show Enter:

0 8 780 President's Favorite: Chocolate Cake

for the Junior Show Enter:

P-0 7 980 President's Favorite: Chocolate Cake

WARREN COUNTY FAIR ASSOCIATION

Baked Goods Auction

Friday • July 22

During the Intermission of the Figure 8 Derby

**All Exhibitors of the Items Chosen to Participate
in the Food Auction will Receive a \$25 Cash Prize.**

The Warren County Fair Board will be auctioning food items selected from the Junior Dairy, Apiary & Culinary Show & the Open Dairy, Apiary & Culinary Show during the Friday night Figure 8 Demo Derby.

After the judges have selected the food items from the Junior & Open Shows, the items will become the property of the Warren

County Fair Association. The owners of the items will receive a specially designated Rosette Ribbon in addition to premium money and any other ribbons. Owners are asked to let the Superintendent know if they will be present for introduction at the auction.

All proceeds from the auction will go to the Warren County Fair Association.

Items to be auctioned:

YEAST BREADS

1. Cinnamon Rolls (Class 700)
2. Dinner Rolls (Class 703)

QUICK BREADS

1. Coffee Cake (Class 900)
2. Muffins (Class 903)
3. Loaf – Banana, Nut, etc. (Best of Class 901 & 902)

CAKES

1. Cake (Best of Class 920, 921 & 922)
2. Cupcakes, Decorated (Class 932)
3. Decorated Cake (Best of Class 930 & 931)
4. Cake Mix – With Additions (Best of Class 935, 936 & 937)

COOKIES

1. Spoon Drop (Best of Class 940, 941 & 942)
2. Bars (Best of Class 946, 947 & 948)
3. Other (Best of Class 944, 945)

CANDY

1. Best of Fudge & Other Candies (Best of Class 960 & 961)
2. Cakepops

PASTRIES

1. Tarts or Turnovers
2. Cherry Pie
3. Other Pie

FAIR PRESIDENT'S FAVORITE

Chocolate Cake
Junior & Open

The Warren County Fair Association would like to thank the following Winners of the 2015 Jr. Home Economics Food Show and the following Businesses for their Contribution to the 2015 Jr. Home Economics Food Auction.



Thank You For Your Support!

EXHIBITOR	ITEM	BUYER
Maddy Gavin	Lemon Chiffon Cake with Almonds	Midwest Bank of Western Illinois
Kyle Flicek.....	Cinnamon Rolls.....	Raritan State Bank
Carly Thompson	Peach Pie	Hopson Sales & Service
MaKayla Trone	Hawaiian Bread.....	Farmer's Grain Company
Trisha Haskins.....	Decorated Cake.....	Huston Cattle Company
Sidney Stewart	Nut Tarts	Halcomb Oil Co.
Carly Thompson	Oatmeal Seasalt Caramel Cookies	Thompson Brothers Painting
Sydney Killey	Camoflage Cake	Kane Trucking
Elizabeth Rodgers.....	Fair Board Presidents Apple Pie	Shimmin Farms
MaKayla Crain.....	Tropical Mango Vanilla Cupcakes	Jeff & Jenny Jensen
Carly Thompson	Toffee Mocha Torte	CGB Agri Inputs
Aubrey Killey	Decorated Chicken Cake	Kevin & DeNeene Killey
Carly Thompson	Don's Corn Dogs Cakepops.....	Byers Premium Cattle
Sydney Killey	Queen Cookies	Wise Family – Hoover Hall
Carly Thompson	Dinner Rolls.....	Huston Verteinary Service
Madison Penn	Coconut Sour Cream Cake	Pioneer, Matt Mahoney
Carly Thompson	Fair Board Presidents Apple Pie	Huston Land Improvment
MaKayla Crain.....	Peanut Butter Fudge	John Huston Landscaping
Emma Parkins.....	Apple Pie	Carrie Services
Abby Dowell	Sugar Cookies	Hopson Sales & Service
Carly Thompson	Cherry Pie	Roseville Verterinary Services
Carrigan Sears	Coffee Cake	Wise Family – Hoover Hall
MaKayla Crain.....	Blueberry Buckle Muffins	Huston Veterinary Service
Aubrey Killey	Toasted Butter pecan Cake	Morton Community Bank
Carly Thompson	Raspberry Streusel Bars	Bill & Diane Thompson Farms

Congratulations To All The Winners!

DEPARTMENT P

JUNIOR HOME ECONOMICS

Friday • July 22

9:00 a.m.

Amount Offered: \$3,402.00

SUPERINTENDENT

Amy Thompson
(309) 426-2012

RULES & REGULATIONS

ENTRY FEE: \$10 (*Entry fees will be deducted from winners only.*)

PREMIUMS OFFERED: 1st \$15, 2nd \$14, 3rd \$13

RIBBONS OFFERED: Best of Show

- Boys and girls 8 to 19 years of age as of 1/1/16 who live in Warren, Henderson, Mercer, McDonough and Hancock counties are eligible to enter.
- Check in time for exhibits is 7:30 – 9:00 a.m.
- The building will be closed at 9:00 a.m. for judging and no late entries can be accepted.
- All Exhibits must be the work of the exhibitor, and made during the current year.
- “Top Awards” will be given to the top exhibits in Food, Clothing, Home Arts, Handicrafts, Flower Arrangements.
- The entry fees are deducted from winnings.
- Exhibitors are limited to one entry per class.
- Not responsible for accidents or breakage.
- All exhibitors MUST have their social security number to enter this show. This will be enforced.
- All items will be judged in the category in which the exhibitor has placed them. No exceptions.
- Superintendents' and judges' decisions are final.
- All entries will be on display until 5:00 p.m. that evening in the shelter house. Projects are to be **picked up at 5:00 p.m.** Exhibitors unable to pick up exhibits should make alternate arrangements. The shelter house must be emptied by 5:30 p.m. Any unclaimed entries will be discarded.

- **Premium checks may be picked up at the fair office on Saturday, July 23rd, after 6:00 p.m. If you can not make it at this time please make other arrangements.** *If you would like your check mailed to you, you must bring a self-addressed stamped envelope to the Fair Office the day of your event.*

FOODS

- All baked foods should be on **HEAVY CARDBOARD TRAYS OR FOAM PLATES**, and covered with clear plastic ziplock bags. Attach entry tag securely to the bag. **BOXES MAY BE USED FOR CAKES.**
- Name of recipes with ingredient list MUST be included. Recipe instructions not needed.
- Each exhibit must be prepared from a different recipe, per person, per family.
- Bring whole product except where stated: (Ex: 12 cookies)



HAASE EMBROIDERY & PRINTING	400 N. 11th Street Monmouth, IL 61462 (309) 734-7483 Fax: (309) 734-7972 haaseemb@monmouthnet.net
--	---

DEPARTMENT P-L

JUNIOR FLORICULTURE

FLOWER ARRANGEMENTS

In Suitable Container. Labeled for occasion and place to be used.

DEPT.	CATEGORY	CLASS	DESCRIPTION OF ENTRY
-------	----------	-------	----------------------

P-L	1	800	Mixed Arrangement
-----	---	-----	-------------------

P-L	1	801	Potted Plant
-----	---	-----	--------------





FOOD TENT

Wednesday, July 20	Tri-County Cattlemen
Thursday, July 21	Lions Club
Friday, July 22	Roseville Kids Place
Saturday, July 23	Sauced & Smokin'

Serving from 5:00 - 9:00 p.m.

Join us for some great food and
to help support these local not-for-profit groups!

DEPARTMENT P-M

JUNIOR ARTS & CRAFTS

SEWING & STITCHERY

DEPT.	CATEGORY	CLASS	DESCRIPTION OF ENTRY
P-M	1	810	Sewing – Slacks or Skirt
P-M	1	811	Sewing – Blouse or Jacket
P-M	1	812	Sewing – Dress (1 or 2 piece)
P-M	1	813	Sewing – Sleepwear
P-M	1	814	Sewing – Any Other Article Not Listed
P-M	1	815	Knitting
P-M	1	816	Crochet
P-M	1	817	Counted Cross Stitch
P-M	1	818	Latch Hook
P-M	1	819	Tied Fleece Balnket
P-M	1	820	Any Other Article Not Listed



ARTS

All enteries should be matted NOT framed.

DEPT.	CATEGORY	CLASS	DESCRIPTION OF ENTRY
P-M	3	830	Sketching (ages 8-12)
P-M	3	831	Sketching (ages 13-19)
P-M	3	832	Painting free hand (ages 8-12)
P-M	3	833	Painting free hand (ages 13-19)
P-M	3	834	Color Photography (people)
P-M	3	835	Color Photography (landscape)
P-M	3	836	Color Photography (flowers)
P-M	3	837	Color Photography (animals)
P-M	3	838	Color Photography (digitally altered)
P-M	3	839	Black & White Photography (people)
P-M	3	840	Black & White Photography (landscape)
P-M	3	841	Black & White Photography (animals)
P-M	3	842	Black & White Photography (digitally altered)
P-M	3	843	Sepia Photography



Open for Public Viewing from 1 – 5 p.m.

CRAFTS

DEPT.	CATEGORY	CLASS	DESCRIPTION OF ENTRY
P-M	4	850	Nature Craft
P-M	4	851	Ceramic, hand formed, original, finished greenware
P-M	4	852	Clay, hand formed, original
P-M	4	853	Collectibles (ages 8-12) limit of 5 items
P-M	4	854	Collectibles (ages 13-19) limit of 5 items
P-M	4	855	Metal Craft
P-M	4	856	Duct Tape Craft
P-M	4	857	Shirt Painting (ages 8-19)
P-M	4	858	Scrapbooking (1 page)
P-M	4	859	Scrapbooking (full book)
P-M	4	860	Handmade Greeting Card
P-M	4	861	Beaded Craft
P-M	4	862	Recycled Craft
P-M	4	863	Leather Craft
P-M	4	864	Legos/K'Nex (1 item made from a kit)
P-M	4	865	Do Your Own Thing (ages 8-12)
P-M	4	866	Do Your Own Thing (ages 13-19)



WOODWORKING

DEPT.	CATEGORY	CLASS	DESCRIPTION OF ENTRY
P-M	5	870	Woodwork, small article (ages 8-12)
P-M	5	871	Woodwork, small article (ages 13-19)
P-M	5	872	Woodwork, large article (ages 8-12)
P-M	5	873	Woodwork, large article (ages 13-19)



649 - 130th Ave.
Monmouth, IL 61462
www.lftseed.com

MARK GILLEN
Dealer

309-255-0017 Cell
309-734-6514 Fax
mrgillen@yahoo.com



Zach Johnson
President

309-734-7473

Culligan
309-734-7232

DEPARTMENT P-0

JUNIOR DAIRY, APIARY & CULINARY

CLASSES

** The items of the 1st place winners will be sold at the Food Auction and the Exhibitor will receive a \$25 cash prize.*

BREADS

Yeast Breads

(*Best of Class 700 & 703 will be chosen for the Food Auction)

DEPT.	CATEGORY	CLASS	DESCRIP. OF ENTRY & AMOUNT TO ENTER
-------	----------	-------	-------------------------------------

*P-0	...	1 700.....Cinnamon Rolls (12+1)
P-0	...	1 701.....White Bread (1 loaf)
P-0	...	1 702.....Miscellaneous Loaf of Bread
*P-0	...	1 703.....Dinner Rolls (12+1)
P-0	...	1 704.....Misc. Bread Machine Breads

Quick Breads

(*Best of Class 902 & 903 will be chosen for the Food Auction)

DEPT.	CATEGORY	CLASS	DESCRIP. OF ENTRY & AMOUNT TO ENTER
-------	----------	-------	-------------------------------------

*P-0	...	2900.....Coffee Cake (1 layer)
*P-0	...	2901.....Loaf - Banana/Banana Nut
*P-0	...	2902.....Loaf - Other
*P-0	...	2903.....Muffins (12+1)

CAKES

Cake (Made From Scratch, Frosted)

(*Best of Class 920, 921 & 922 will be chosen for the Food Auction)

DEPT.	CATEGORY	CLASS	DESCRIP. OF ENTRY & AMOUNT TO ENTER
-------	----------	-------	-------------------------------------

*P-0	...	3920.....Chocolate (2 or more layers)
*P-0	...	3921.....Miscellaneous (2 or more layers)
*P-0	...	3922.....Non-layer cake

Tube Cake (Made From Scratch, Frosted)

DEPT.	CATEGORY	CLASS	DESCRIP. OF ENTRY & AMOUNT TO ENTER
-------	----------	-------	-------------------------------------

*P-0	...	3927.....Chiffon or Angel Food
------	-----	---	------------------------------------

Decorated Cake (Commercial Cake Mix Permissible)

(*Best of Decorated Cakes will be chosen for the Food Auction)

(*Best of Cupcakes will be chosen for the Food Auction)

DEPT.	CATEGORY	CLASS	DESCRIP. OF ENTRY & AMOUNT TO ENTER
-------	----------	-------	-------------------------------------

*P-0	...	3930....."Cut-Up Cake"
*P-0	...	3931....."Uncut Cake"
*P-0	...	3932.....Cupcakes (12+1)

Cake Mixes with Additions

(Extra Ingredients Added to Enhance Taste and Appeal)

(*Best of Cake Mixes... will be chosen for the Food Auction)

DEPT.	CATEGORY	CLASS	DESCRIP. OF ENTRY & AMOUNT TO ENTER
-------	----------	-------	-------------------------------------

*P-0	...	3935.....Layer Cake (2 or more layers) (1 Cake)
*P-0	...	3936.....Loaf or Non-layer (1 Cake)
*P-0	...	3937.....Bundt (1 Cake)

COOKIES

Spoon Dropped Cookies

(*Best of Spoon Dropped... will be chosen for the Food Auction)

DEPT.	CATEGORY	CLASS	DESCRIP. OF ENTRY & AMOUNT TO ENTER
-------	----------	-------	-------------------------------------

*P-0	...	4940.....Oatmeal (12+1)
*P-0	...	4941.....Chocolate Chip (12+1)
*P-0	...	4942.....Other (12+1)

Other Cookies

(*Best of Other... will be chosen for the Food Auction)

DEPT.	CATEGORY	CLASS	DESCRIP. OF ENTRY & AMOUNT TO ENTER
-------	----------	-------	-------------------------------------

*P-0	...	4944.....Sugar (12+1)
*P-0	...	4945.....Miscellaneous (12+1)

Bars

(*Best of Bars... will be chosen for the Food Auction)

DEPT.	CATEGORY	CLASS	DESCRIP. OF ENTRY & AMOUNT TO ENTER
-------	----------	-------	-------------------------------------

*P-0	...	4946.....Fruit (raisins, nut, etc.) May be iced (12+1)
*P-0	...	4947.....Brownies (Chocolate or Butterscotch) (12+1)
*P-0	...	4948.....Other (12+1)

Open for Public Viewing from 1 – 5 p.m.

JUNIOR HOME ECONOMICS *(continued)*

CANDIES

Best Plate (12 pieces)

(*Best of Class 960, 961 & 962... will be chosen for the Food Auction)

DEPT.	CATEGORY	CLASS	DESCRIP. OF ENTRY & AMOUNT TO ENTER
*P-0 5960Fudge (12+1)
*P-0 5961Cakepops (12+1)
*P-0 5962Other (12+1)

PASTRIES

Fruit (No Cream Fillings or Nut Pies)

DEPT.	CATEGORY	CLASS	DESCRIP. OF ENTRY & AMOUNT TO ENTER
*P-0 6970Tarts or Turnovers (6+1)
*P-0 6971Cherry Pie (Whole Pie)
*P-0 6972Other Pie (Whole Pie)

SPECIAL CATEGORY

Fair Board President's Favorite

DEPT.	CATEGORY	CLASS	DESCRIP. OF ENTRY & AMOUNT TO ENTER
*P-0 7980President's Favorite: Chocolate Cake



**\$25 CASH PRIZE
AWARDED TO FOOD AUCTION WINNERS**



DEPARTMENT Q

TRACTOR PULL

Wednesday • July 20

6:30 p.m.

Illinois Farm Pullers Association

Amount Offered: \$3,600.00

SUPERINTENDENT

Ryan McClure

COMMITTEE

Jesse Thorton

Joe Gibb

Jeremy Anderson

Will Zimmerman

PREMIUMS FOR CLASSES

IFPA & Farm Stock

(ENTRY FEE \$10)

1st	2nd	3rd	4th	5th
\$100	\$80	\$60	\$40	\$20

CLASSES

IFPA

9,500 Pro Farm
10,000 Pro Farm
5,200 Classic Modified
5,700 Classic Modified
6,200 Pro Street 4x4
6,200 Pro Stock 4x4
6,500 Modified 4x4

Farm Stock

11,500 LBS
12,500 LBS

Diesel Truck

8,500 Work Stock Diesel
8,500 Open Hot Street Diesel

Go to www.randallsperf.com for diesel truck rules and
www.ifpapull.com for all other class rules.

RIDEN

FARM SUPPLY



Farm Chemicals • Lime • Fertilizer
VRT Spreading • Custom Application
Asgrow and Dekalb Seeds • LP Gas
Gallagher Fence • Twin Mountain Fence

17905 N. 2300 Road • Good Hope, IL 61438 • (309) 772-3121



- Full Line of Truck and SUV Accessories
- Diesel and Gas Performance Products
- Stainless Steel Exhaust Systems and Tips
- 5th Wheel and Bumper Hitches
- Superflow Chassis Dyno
- Full Service Light Duty Diesel Repair

randallsperf.com

(309) 627-2500

brandall79@hotmail.com

Fax: (309) 627-2121

R.R. 5, Box 134 • Gladstone, IL 61437

★ A BEER ★



★ YOU CAN HAVE A ★
BEER WITH

THE
BUD LIGHT
PARTY

WALTERS

ACCOUNTING & TAX

Mary Walters
Judy Downin

(309) 426-2018

Fax: (309) 426-2960

Roseville, IL 61473



**WARREN-HENDERSON
FARM
BUREAU®**

*Proud of our Past...
Confident of our Future.*

MISSION STATEMENT:

*To promote and support
agriculture and our communities.*

www.whfarmbureau.org

(309) 734-9401

1000 North Main • P.O. Box 348 • Monmouth, IL

(309) 924-1151

406 East Main • P.O. Box 59 • Stronghurst, IL



Tompkins State Bank

*Community Minded...
Customer Focused Since 1884*

Avon	Abingdon
465-3834	462-5541

Knoxville	Galesburg
289-5541	342-8161

**24 Hour Access 1-888-465-3834
www.tompkinsstatebank.com**

Lennox Dealer

24-Hour Emergency Service

Licensed & Insured

Installation

New Construction

Repair Service

Warren Heating & Cooling

Luke Skees, Owner



160 N. Main Street

Roseville, IL 61473

Cell 309-333-0663

Office 309-426-2473

LENNOX™

Innovation never felt so good.®



Brian Parkins

Phone - 309-221-7042

1223 North 6th Street

Monmouth, IL 61462

Email: Carrierservices123@gmail.com

Good Luck To All the Exhibitors

Truck Services | Trailer Repairs

Tires | Reefer and Livestock Washout

CAT Scales | Warehousing



ALL NEW

All New Products In Stock Now

GOLE IMPLEMENT
(309) 924-1191

Same Great Sales & Service • Servicing AGCO GLEANER HESSTON

**JCB Ag & Construction, Zetor, Kioti, Demco Carts, Wagon Sprayers,
 Full Line Simplicity Lawn & Garden, Rhino, EarthMaster**

Simplicity
KIOTI

EARTHMASTER
Zetor

RHINO

JCB
Demco



FOR YOUTH DEVELOPMENT®
 FOR HEALTHY LIVING
 FOR SOCIAL RESPONSIBILITY

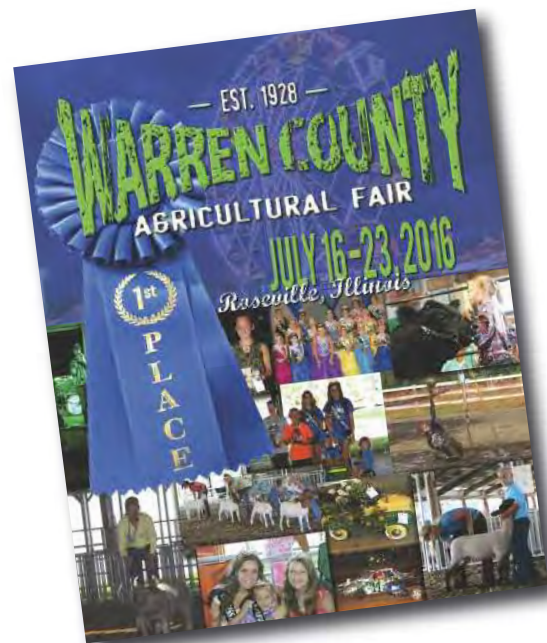


**WHERE
 EVERYBODY COMES
 TO PLAY**

Only at the Y.

Good things come together at the Warren County Y. Find a class for yourself or a sports league for the kids. Support your own personal goals, or support your neighbors' desires to live healthier lives. There's a little something for everyone and a lot for your community. Stop in and let us surprise you.

Warren County YMCA
 700 West Harlem Ave
 Monmouth, IL 61462



**Look for
 updates
 of events
 throughout
 the fair on
 our FB Page**

www.ilwcf.com



**Visit our Facebook Page at
 Illinois Warren County Fair**

Offering a Full Range of Funerals and Cremation Services

Wise Family - Hoover Hall

"Our Family Serving Yours"

Jeremy & Christa Wise



900 N. Main, Monmouth, IL 61462 • (309) 734-7730
205 W. Hunt Street, Alexis, IL 61412 • (309) 482-6142
e-mail: hooverhall@frontiernet.net
website: www.wisefamily-hooverhall.com

FIGURE 8 DEMOLITION DERBY

Thursday • July 21 & Friday • July 22

7:00 p.m.

Entry Fee: \$30.00

Maximum Amount Offered: \$4,625 Each Night

SUPERINTENDENT

Ben Thompson

COMMITTEE

Joe Huston

Jesse Thorton

Jeff Johnson

TJ Stevenson

Joe Gibb

Rick Huston

PREMIUMS FOR CLASSES

BIG CAR WELD CLASS:

ENTRY FEE: \$30.00

CASH ONLY NON REFUNDABLE

PREMIUMS OFFERED: 1st \$1,000, 2nd \$250, 3rd \$200, 4th \$150, 5th \$100

Consolation Class – 1st place will be automatically entered to participate in the Feature.
(Possibility of 3 classes)

COMPACT WELD CAR CLASS:

ENTRY FEE: \$30.00

CASH ONLY NON REFUNDABLE

PREMIUMS OFFERED BASED ON MINIMUM

OF 10 ENTRIES: 1st \$500, 2nd \$150, 3rd \$50

- Standard engine for each vehicle applies.
- All other rules and regulations apply to this class.

RWD WIRE ONLY CLASS:

ENTRY FEE: \$30.00

CASH ONLY NON REFUNDABLE

PREMIUMS OFFERED BASED ON MINIMUM

OF 10 ENTRIES: 1st \$750, 2nd \$250, 3rd \$100

- Read rules and regulations on Wire Class.

FWD WIRE ONLY CLASS:

ENTRY FEE: \$30.00

CASH ONLY NON REFUNDABLE

PREMIUMS OFFERED BASED ON MINIMUM

OF 10 ENTRIES: 1st \$250, 2nd \$125, 3rd \$50

- Read rules and regulations on Wire Class.

TRUCKS:

ENTRY FEE: \$30.00

CASH ONLY NON REFUNDABLE

PREMIUMS OFFERED BASED ON MINIMUM

OF 6 ENTRIES: 1st \$250, 2nd \$125, 3rd \$50

MINI-VAN & SMALL TRUCK:

ENTRY FEE: \$30.00

CASH ONLY NON REFUNDABLE

PREMIUMS PRORATED BASED ON MINIMUM

OF 6 ENTRIES: 1st \$250, 2nd \$125, 3rd \$50



Visit our Facebook Page at Illinois Warren County Fair



Halcomb Oil Co.

Monmouth Office: (309) 734-7797 Raritan Office: (309) 746-6278

(309) 734-7797



Jimmy Halcomb
 (309) 224-3861

Tom Boock
 (309) 221-8044

Jake Halcomb
 (309) 221-6483

Keith Henry
 (309) 221-9547

Steve Wisslead
 (309) 337-4280

PAINTER FARM EQUIPMENT



201 WEST HARLEM AVE. • MONMOUTH, IL 61462

(309) 734-3541

WWW.PAINTERFARMEQUIPMENT.COM

SALES



TODD PAINTER • ROD FOX • JERRY PAINTER • ROB SPENGLER

RULES & REGULATIONS

1. Drivers inspection and registration will be from 4:00 p.m. to 6:00 p.m. on the day of the show.
2. All cars must be inspected in the designated inspection area prior to registration.
3. The driver is admitted free at gate, all others accompanying must pay regular gate admission or purchase a pit pass.
4. A drivers meeting will be held at 6:30 p.m. in the pit area.

DRIVER ENTRY

**ALL RULES WILL BE STRICTLY ENFORCED.
NO EXCEPTIONS!**

1. Driver and car remain as 1 entry. No substitution for car or driver.
2. No imports, foreign cars, Jeeps, trucks, convertibles, etc., American cars and station wagons only.
3. Driver must be 18 years of age. Drivers 16 and 17 years old may participate, if a release is signed by parent or legal guardian before the show.
4. Driver must sign a release form prior to race time.
5. Driver will be assigned a preliminary heat and will draw for position.
6. **IF DRIVER IS DISQUALIFIED, HE IS OUT FOR THE REMAINDER OF THE NIGHT.**
7. **A CAR MUST PARTICIPATE IN A HEAT RACE BEFORE IT IS ELIGIBLE FOR A CONSOLATION OR FEATURE RACE.**
8. If a driver qualifies for the feature, he may not participate in the consolation race.

PREPARATION OF CARS

1. **Car numbers must be clearly visible on TOP of car.**
2. Radiators and fans may not be relocated. Batteries may be replaced in a secure position with a protective cover.
3. All glass must be removed prior to reaching the fairgrounds.
4. Gas tanks must be outboard marine gas tanks or after market fuel cell, using marine type coupler, or similar quality coupling. Absolutely no five gallon buckets or cans. Gas tanks must be relocated to the back seat area, and properly secured with a protective cover.
5. No trailer hitches or special lifts.
6. Car must be free of all debris, spare parts, tools, etc.
7. All doors and wagon gates must be securely strapped or welded shut or car will be disqualified. Drivers door must be reinforced.
8. Safety belts, helmets and safety glasses required and to be worn.
9. **IF THERE IS A GAS LEAK OR FIRE, OFFICIALS MUST RE-INSPECT CAR AND APPROVE RE-ENTRY. A SECOND FIRE WILL AUTOMATICALLY DISQUALIFY THE CAR.**
10. Reckless driving or conduct when entering or leaving track area and pits, will result in immediate disqualification and forfeiture of entry fees.

HEATS

The derby will be composed of individual heats and one feature, with a cash purse going to the cars making the feature event, and Grand Prize going to the winner of the feature. Feature events will be made up of first, second, and third place finishers in each heat, or as otherwise specified prior to the event. Warren County Fair Association reserves the right to determine the number of cars that will participate from each heat in the feature event.

PRECEDING THE FEATURE, ANY CARS STILL ABLE TO RUN BUT NOT ELIGIBLE FOR THE FEATURE EVENT, MAY COMPETE IN A CONSOLATION HEAT FOR A CHANCE TO PARTICIPATE IN THE FEATURE.

There will be a maximum of three consolation heats. The first one-third of the prelim. heats will compete in the first consolation; the second one-third of the prelim. heats will compete in the second consolation; and the third one-third of the prelim. heats will compete for the third consolation. **ANY DECISION MADE BY THE WARREN COUNTY FAIR ASSOCIATION DEMO DERBY COMMITTEE IS FINAL.**

PARTICIPATION REGULATIONS

1. No deliberate hitting of opponent's car in drivers door.
2. Driver must remain in the car until his car is removed from the track area, unless the car catches fire, then the driver is to leave the car immediately.

WIRE CLASS

As per Viola Boyz Promotions Open Wire Class Rules.

For any questions call Ben Thompson at (309) 255-3150.

Power Wheels Derby

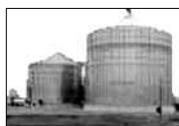


Thursday & Friday starting at 6:30 p.m.

Saturday starting at 6:00 p.m

FREE

Age Groups: 4 - 6 years old & 7 - 9 years old



Stronghurst
GRAIN & MDSE
STRONGHURST, IL

Stronghurst Grain & Mdse Co.
www.stronghurstgrain.com • (309) 924-1271



Repair/Maintain Tractors,
Combines, Implements, Trucks

Have Tools, Will Travel

Gene Beetler
1890 Sunset Drive
Galesburg, IL 61401

309-341-1263
cell: 309-368-5452
gbeetler@hotmail.com



Community National Bank
in Monmouth

311 N. Main • Monmouth, IL 61462
(309) 734-5131



• CRIMINAL DEFENSE • DUI & TRAFFIC
DAVID REID CLARK STEVEN R. GLASGOW
MICHELLE SPERRY
PARALEGAL

309-734-8464 MONMOUTH, ILLINOIS



**TRI COUNTY
CATTLEMEN'S
ASSOCIATION**

HENDERSON • McDONOUGH • WARREN



V.R. Corman, DVM & Associates

Roseville
VETERINARY
SERVICES, PC

(309) 426-2121



Brett Singleton
(309) 221-5388

HIEL PARTS & SERVICE

TRAILER SALES

PRAIRIE CITY, IL
(309) 775-3333

JOHN HIEL
TRAVIS HIEL

Britt Enterprises, LLC
Phil Britt
Independent Builder
Office: (309) 341-3400
Fax: (309) 341-3400
Cell: (309) 255-3400



**Wick
Buildings**

1977 Knox Road 200 East
Galesburg, IL 61401

pjbritt34@gmail.com • WickBuildings.com



Monmouth
&
Aledo

WRAM
Classic Country



Your Information Station

55 Public Square • Monmouth, IL 61462
Office (309) 734-9452

**Corman
Memorial Home**

Roseville • Avon • London Mills

(309) 426-2211

www.cormanmh.com

DEMO DERBY

Saturday • July 23

6:30 p.m.

Entry Fee: \$50.00 • Pit Passes: \$20.00

SUPERINTENDENT

Ben Thompson

Viola Boyz Promotions

Any questions contact Rick Dobbels 309-507-1974 or Chad Kinsey 309-737-8736.

COMMITTEE

Joe Huston

Jesse Thorton

TJ Stevenson

Rick Huston

PREMIUMS FOR CLASSES

SMALL CAR

1st Place – \$600
2nd Place – \$300
3rd Place – \$100
4th Place – \$50
5th Place – \$25

80 & NEWER

1st Place – \$1000
2nd Place – \$500
3rd Place – \$250
4th Place – \$125
5th Place – \$50

OPEN WIRE

1st Place – \$1000
2nd Place – \$500
3rd Place – \$250
4th Place – \$125
5th Place – \$50

FAIR CLASS

\$1000 Purse

RULES & REGULATIONS

Riders allowed in all classes, except small cars.
Riders get \$100 if they are in winning car.

80 & NEWER WIRE RULES

Drivers

1. MUST be 18 years of age, 16 & 17 year olds need notarized permit with parents consent and Signature.
2. Any driver using an open face helmet will NOT be covered by insurance if facial injury occurs.
3. One person per car and MUST attend the drivers meeting before the race.
4. MUST wear approved racing helmets and seat belts.

Car Preparation

1. Any bumper may be used and bumpers may be reinforced (Can use homemade bumper but must be stock appearing), and welded 4" back from the front of the frame using strap or brackets, but cannot come in contact with the radiator support mount. Can weld bumper directly to frame. Can shorten the frame from radiator support forward, radiator support mount must stay in factory location. Radiator protectors are allowed but must use the stock air conditioning condenser and must bolt on only (4 spots).
2. Drive train Ford on Ford, GM on GM, etc. Motor mounts may be welded to frame. Must be welded within reason, no excessive welding. Cannot strengthen the car frame in anyway. Can run a motor with a dp but firewall must be cut enough out or you will be disqualified. Can run a trans protector but firewall must be cut out down to were trans tunnel starts.

3. One bar across dash and one bar behind seat no further than 4" from seat. May connect dash bar and seat bar. No other support anywhere else in the car. Bars may be welded in. MUST HAVE A WINDOW BAR, CAN USE WIRE OR CHAIN ALSO.
4. Gas tank protectors allowed. Cannot weld gas tank protectors to body. Roll over bars allowed but must go to cage only. May run after market Steering, gas pedal or shifter. Steering boxes must bolt on no welding, can reinforce tie rods. Trans coolers are allowed, must be located within the cage area. Can run up to 2 batteries.
5. Any tire allowed.
6. Frame and sheet metal may be notched or pre bent. Can pitch frame, (COLD PITCH ONLY).
7. You may change radiator support mount 1" bolt max, may go past hood and bolted with a 4 inch washer. Radiator support spacers cannot be welded to frame or radiator support.
8. Unlimited wire. Frontdoors may be welded, all other doors and trunk wire only.
9. No homemade Slip shafts. No factory type truck slip shaft. Factory Type Car Drive Shaft Only.
10. 2 Straps from A-Arm to frame to adjust car height allowed.
11. Rear ends must be stock, GM on GM, Ford on Ford, etc. must be a direct bolt in, metric 10 bolt rear end max, ... NO MODIFICATIONS TO AXLE HOUSING, AXLES MUST BE STOCK FOR A METRIC CAR REAREND, NO AFTERMARKET AXLES, NO EXPLORER OR MOUNTINEER 31 SPLINE AXLES, c clip elimators may be used or can weld spidergears. Gears can be changed, No bracing. Trailing arms must be stock.

12. Body mounts must remain stock. No taking the metal part out and sucking the body down period. If found you will have to remove all mounts that are like this and replace with #9 wire. If there is a broken bolt must use #9 wire. **DO NOT TOUCH ANY BODY MOUNT BOLT OTHER THAN THE 2 RADIATOR SUPPORT BOLTS.** No bolting fenders or any hood bolts other than the radiator support bolts.

Pit Area and Inspections

1. NO one will be permitted in pits without pit pass.
2. NO alcoholic beverages or drugs are permitted in the pit area. If found with alcohol or drugs in your pit area you will automatically be disqualified and asked to leave. No refund will be given.
3. NO pit persons allowed in arena or track, any violation will result in disqualification.
4. Management **DOES** have the right to inspect or disqualify a car and driver at **ANYTIME**.

NO WELDING ANYWHERE ELSE ON CAR EXCEPT WHERE STATED ABOVE.
NO FIXING RUSTY FRAMES OR ENT FRAMES.

FAIR CLASS & TRUCK CLASS

Call for Information. (309) 737-8736

SMALL CAR CLASS

Small cars are classified as any front wheel drive 4 or 6 cyl car or 4 or 6 cyl rear wheel drive car 105" wheelbase or less.

****** NO 4X4 CARS ALLOWED ******

All rules for the small car demo derby shall be the same as Open Wire class with the exception that the suspension must be stock. Small cars will go through the same inspections as the large cars.

OPEN WIRE

SAME RULES AS 80'S WIRE, EXCEPT THE FOLLOWING:

1. Any motor, transmission, rear end and drive shaft may be used.
2. May reinforce trailing arms, rear end bracing allowed.
3. May convert watts link to a standard 4 link, must use bolt on brackets only for upper trailing arms may weld lower trailing arm brackets to frame (minimum weld). All brackets must be in the stock factory location, none of the brackets can strengthen the frame in any way.
4. 03 newer fords must use factory suspension, no modifications. Must run aluminum cradle.

TRAILER RACES- MUST HAVE A ROLL OVER BAR, WINDOW BAR AND WORKING SEAT BELTS.... IF YO DON'T FOLLOW THESE RULES YOU WON'T RUN.

**Any questions contact Rick Dobbels 309-507-1974 or
Chad Kinsey 309-737-8736**

Helping you protect what matters most



Mark Colclasure

406 E Main | Stronghurst

309-924-1152

mark.colclasure@countryfinancial.com



AUTO | HOME | LIFE | BUSINESS | RETIREMENT



0715-501HO

WARREN COUNTY

AGRICULTURAL FAIR

PRESIDENTS

Isaac Pratt1930 thru 1936
Ralph Switzer1937 thru 1941
Ira Huston1942 thru 1943
W.R. Anderson1946 thru 1946
F.C. Kirkpatrick1947 thru 1949
Paul Taylor1950 thru 1952
E.J. Pflibsen1952 thru 1956
Everett Taylor1958 thru 1958
Bruce Killey1959 thru 1961
Don Kirkpatrick1962 thru 1965
George Rankin1966 thru 1966
Don Kirkpatrick1967 thru 1967
Robert Cunningham1968 thru 1968
Irvin Sprout1969 thru 1970
Dale Huston1971 thru 1973

Leland Rodgers1974 thru 1974
David Killey1975 thru 1977
Pat Huston1978 thru 1980
Van Adkisson1981 thru 1983
Bob Pratt1984 thru 1986
Bill Thompson1987 thru 1989
Ron Moore1990 thru 1992
Lynn Shimmin1993 thru 1995
Mark Colclasure1996 thru 1998
S. Van Ault1999 thru 2001
Jeff Corzatt2002 thru 2004
Kevin Killey2005 thru 2007
Steve Killey2008 thru 2010
Rick Huston2011 thru 2013
Dan Byers2014

VICE PRESIDENTS

Ralph Switzer 1930 thru 1936
M.F. Sprunger 1937 thru 1945
R.B. Switzer 1946 thru 1946
John Felt 1947 thru 1947
Dale Watson 1948 thru 1949
E.H. Kirkpatrick 1950 thru 1951
Everett Taylor 1952 thru 1956
Bruce Killey 1958 thru 1958
Ernest Bacon 1959 thru 1960
Don Kirkpatrick 1961 thru 1961
Rudy Corman 1962 thru 1962
Stuart Mayhew 1963 thru 1964
Cecil Shimmin 1965 thru 1967
Keith Heaton 1968 thru 1968
Dale Huston 1969 thru 1970
Leland Rodgers 1971 thru 1973
David Killey 1974 thru 1974

Don Earp 1975 thru 1976
Pat Huston 1977 thru 1977
Van Adkisson 1978 thru 1980
Bob Pratt 1981 thru 1983
Bill Thompson 1984 thru 1986
Ron Moore 1987 thru 1989
Lynn Shimmin 1990 thru 1992
Mark Colclasure 1993 thru 1995
Jeff Wright 1996 thru 1997
Van Ault 1998 thru 1998
Brian Monroe 1999 thru 2000
Jeff Corzatt 2001 thru 2001
Kevin Killey 2002 thru 2004
Steve Killey 2005 thru 2007
Rick Huston 2008 thru 2010
Dan Byers 2011 thru 2013
Jeff Jensen 2014

WARREN COUNTY

AGRICULTURAL FAIR

SECRETARIES

Forster Parks1930 thru 1934
H.F. Kelly (Asst.)1934 thru 1934
F.R. Taylor1934 thru 1934
E.H. Kirkpatrick1935 thru 1947
John Felt1948 thru 1959
Harlan Monroe1960 thru 1964
Don Farr1965 thru 1968
Marvin Hawk1969 thru 1970
Robert Cunningham1971 thru 1974
Terry Jones1975 thru 1976
Lynn Shimmmin1977 thru 1984
Susan Earp1985 thru 1986
Marianne Peirce1987 thru 1987
Lissa Ault1988 thru 2007
Matt Mahoney2008 thru 2013
Tina Huston2014

TREASURERS

Arthur Taylor1930 thru 1932
Fred Taylor1933 thru 1948
Phil Adkisson1949 thru 1958
Howard Bacon1959 thru 1961
John Ockert1962 thru 1964
Frank Cook1965 thru 1967
Don Earp1968 thru 1973
Mervin Ross1974 thru 1977
Steve Mahoney1978 thru 1980
David Downin1981 thru 1986
Lissa Ault1987 thru 2005
Brian Parkins2006 thru 2013
Ben Thompson2014

IPP Associates, LLC

1105 W Broadway Monmouth, IL 61462

Dan Mowen – Managing Broker



Formerly Hennenfent Realty, LLC

309-734-6205

Real Estate ★ Auctions
Farm Management
Capital Gains Avoidance

www.IllinoisPrimeProperties.com

Sell Your Farm with

NO CAPITAL GAINS

Capital Gain Taxes Legally Forgiven
 on the sale of Real Estate,
 Live Stock, Family Businesses, &
 Corporations even if selling to family
 members without doing a
 1031 exchange.

Let our experts talk to your CPA

**FROM TRUCKS TO TRACTORS—
WE'RE FILTER-READY.**

Stop in today to see our wide in-stock selection.

CNH INDUSTRIAL
GENUINE
PARTS

BIRKEY'S

2900 E Jackson St
Macomb, IL 61455
309-837-1700



664 US Hwy 150 E
Galesburg, IL 61401
309-341-4360



Neff Co. Avon



2016 JD 9RX Tractor

(309) 465-3184

(800) 448-8373

112 Main Street
Avon, IL 61415

BILL MALONEY, OWNER



JOHN DEERE

SOLID. STABLE. STILL JOHN DEERE.

LSI ACCOUNTING

- Payroll Services
- Tax & Accounting

Fast, Accurate &
Surprisingly Affordable!

(309) 734-7213

219 E. Euclid
Monmouth, IL 61462

WESTERN ILLINOIS TITLE COMPANY

Susan Higgins, Agent

wititle08@aol.com

FOUR LOCATIONS TO SERVE YOU

411 E. Broadway
Monmouth, IL 61462
309-734-8899

126 W. Exchange Street
Cambridge, IL 61238
309-937-2483

352 North Henderson
Galesburg, IL 61401
309-342-6135

204 East Main Street
Biggsville, IL 61418
309-627-2050

NO PLACE LIKE HOME



*Gifts & Decorative
Accessories*

(309) 833-1150

Pam Kelso
Diana Mayhew

421 W. Jackson St.
Macomb, IL 61455

WARREN COUNTY

AGRICULTURAL FAIR

PAST & PRESENT FAIR DIRECTORS

Adkisson, Barb6 years
 Adkisson, Lloyd17 years
 Adkisson, Phil12 years
 Adkisson, Shawn11 years
 Adkisson, Todd6 years
 Adkisson, Van33 years
 Allard, H.H.12 years
 Anderson, Art1 year
 Anderson, Jeremy2016-
 Anderson, Jim2008-
 Anderson, Wilbur17 years
 Atkins, E.L.1 year
 Ault, George18 years
 Ault, Lissa20 years
 Ault, Scott4 years
 Ault, Van10 years
 Axline, William20 years
 Bacon, Ernest9 years
 Bacon, Howard18 years
 Bagley, Pat9 years
 Bewley, Tim6 years
 Birdsell, Harvey8 years
 Boyd, W. L.6 years
 Boyd, William E.8 years
 Bride, Fred12 years
 Bride, Jim18 years
 Bride, Jim6 years
 Bride, Tom3 years
 Bycroft, Bill9 years
 Byers, Chuck15 years
 Byers, Dan2001-
 Callister, W.B.9 years
 Callow, James17 years
 Carlson, Bob1995-
 Carrier, Leo3 years
 Colclasure, Mark13 years
 Cole, Conley3 years
 Cook, Frank6 years
 Corbin, Jesse4 years
 Corman, Rudy3 years
 Corman, Vic3 years
 Corzatt, Jeff16 years
 Crandall, Gene12 years
 Crandall, Paul Jr.8 years
 Cunningham, Chester12 years
 Cunningham, Robert15 years
 Davis, George3 years
 Davis, Keith2 years
 Downin, David16 years
 Earp, Don20 years
 Earp, Susan2 years
 Farr, Don6 years
 Felt, John17 years
 Flatt, Chase3 years
 Gibb, Barb7 years
 Gibb, Kerry11 years
 Gibb, Mitch2013-
 Gibb, Robert3 years
 Gillen, Mark1994-

Gipe, Shane2005-
 Grant, Dave4 years
 Grant, Roger4 years
 Green, Rip7 years
 Greenstreet, Steve2000-
 Hawk, Marvin3 years
 Hayes, Ralph3 years
 Heaton, Keith3 years
 Henry, Keith11 years
 Hopson, Dick10 years
 Huston, Andy18 years
 Huston, Brian1 year
 Huston, Dale9 years
 Huston, Frank11 years
 Huston, Ira18 years
 Huston, Jason3 years
 Huston, Joe2005-
 Huston, John13 years
 Huston, John C.7 years
 Huston, Mike2000-
 Huston, Pat20 years
 Huston, Rick1999-
 Huston, Robert8 years
 Huston, Ruben17 years
 Huston, Tina2005-
 Jensen, Jeff2009-
 Jones, John6 years
 Jones, Terry16 years
 Kane, Jason2 years
 Killey, Bruce15 years
 Killey, David18 years
 Killey, DeNeene2008-
 Killey, Kevin1994-
 Killey, Steve2000-
 Kirkpatrick, Don14 years
 Kirkpatrick, Earl22 years
 Kirkpatrick, Frank20 years
 LaGrow, Sam2 years
 Lang, Frank1 year
 Lieurance, L. H.3 years
 Lincoln, Deen3 years
 Lofftus, James3 years
 McClure, Ryan2011-
 McCune, Kevin7 years
 Mahoney, Leo7 years
 Mahoney, Matt13 years
 Mahoney, Steve12 years
 Martin, Haskell3 years
 Mayhew, E.E.6 years
 Mayhew, Stuart7 years
 Mills, Don1 year
 Mings, Bob6 years
 Mings, Richard11 years
 Missavage, Tom7 years
 Monroe, Brian8 years
 Monroe, Harlan12 years
 Monroe, Terry5 years
 Moore, Ron13 years
 Ockert, John6 years

Oldfield, Curt2 years
 Olson, Tom6 years
 Parkins, Brian2005-
 Parks, Forster6 years
 Pearson, R.R.15 years
 Peirce, Marianne7 years
 Peoples, Earl6 years
 Perrine, Paul28 years
 Pflibsen, E.J.7 years
 Pratt, Bob20 years
 Pratt, I.C.7 years
 Rankin, George6 years
 Ray, Bedford26 years
 Reynolds, Steve2 years
 Ricketts, Darryl12 years
 Rodgers, Leland9 years
 Ross, Mervin9 years
 Ruble, Harold4 years
 Sanford, Craig7 years
 Schleich, Tyler1 year
 Schwartz, Taylor2 years
 Scott, C. M.12 years
 Shimmin, Cecil10 years
 Shimmin, F. R.12 years
 Shimmin, Lynn1976-
 Sprout, Don33 years
 Sprout, Irvin9 years
 Sprunger, M.F.10 years
 Stevenson, T.J.2014
 Stice, Earl19 years
 Stice, Lawrence5 years
 Strickler, Ed6 years
 Strickler, Jon2014
 Strong, Harold3 years
 Sullivan, Raymond1 year
 Switzer, Ralph21 years
 Taflinger, Dan8 years
 Taylor, Everett12 years
 Taylor, Fred17 years
 Taylor, Paul10 years
 Terpening, Richard4 years
 Terpening, Wilbur7 years
 Tharp, Thad3 years
 Thompson, Ben2011-
 Thompson, Bill1983-
 Thompson, Ed6 years
 Thompson, Rick2 years
 Thorton, Jesse2007-
 Tomlin, B.A.2 years
 Torrance, Duane12 years
 Watson, Dale4 years
 Williams, Chris2005-
 Worthington, Dave5 years
 Worthington, Joe14 years
 Worthington, Keith9 years
 Wright, Jeff4 years
 Zimmerman, Will2016-

Kid's Day

Saturday · July 23, 2016 · 3:00 p.m. · Eldridge Park

Fun!!

Pedal Pull!

Lots of Water!!

Games

Fire Safety

Face Painting

Candy

Prizes

MC

SPORT AND MORE

**201 S. Main Street
Monmouth, IL 61462**

Screen Printing

Embroidery

Digital Printing

Signs & Banners

Trophies & Awards

In House Graphics

309-734-5912



mcsportsandmore

mcsportorders@gmail.com



PIONEER®

A DUPONT COMPANY

Gipe Seeds

Shane Gipe

Cell: (309) 221-2895 • Office (309) 924-2377

s.gipe@plantpioneer.com

215 W. Mary Street • Stronghurst, IL 61480

RKP DIRECTOR • AMANDA PARKINS



Roseville Kids Place

PRE-SCHOOL - DAYCARE & MUCH MORE!

Established June 2003

(309) 426-1661

265 West Penn Ave. • P.O. Box 17 • Roseville, IL 61473

- Serving Children 6 Weeks to 12 Years of Age.
- DCFS Licensed for 74 Children.
- Infant Room, Toddler Room, 2 Year Old Room, Pre-K Room & School Age Room.
- Pre-K Program for Ages 3-5 Years. M-F: 9-11:30 a.m.
- 2 Year Old Program that follows the same curriculum as the Pre-K Program. M-F: 9-11:30 a.m.
- We Offer Before & After School Care & Full Time Summer Care.
- Staff is Trained in Early Childhood & Maintains Continued Education Hours.
- Enrollment Applications Accepted at All Times.
- Hours: Monday - Friday 6:30 am to 5:30 pm



HEARTLAND TREE SERVICE



AVON, ILLINOIS

309-371-3825

“Work with a Local Banker You Know and Trust”



MATT GILLEN



JUSTIN JOHNSTON

*Serving
Farmers
in
Four
Counties*

TYPES OF LOANS WE OFFER:

- OPERATING LINES OF CREDIT
- EQUIPMENT
- LIVESTOCK
- ILLINOIS FINANCE AUTHORITY
- FSA GUARANTEED LOANS



MIDWEST BANK

200 East Broadway
Monmouth, IL 61462
(309) 734-2265



**MID-MISS
GROUP
CONSOLIDATED
GRAIN AND BARGE CO.**

(309) 457 - 4800

Burnside • Colusa • Dallas City
Ferris • Gladstone Bluff • Gladstone Junction
Gladstone Landing • Larchland • Little York • Media
Nauvoo • Oquawka • Smithshire • Suez
Wever • Yorkwood

WARREN COUNTY

AGRICULTURAL FAIR

USE THIS ENTRY FORM FOR ONLY...

**JUNIOR HOME ECONOMICS SHOWS
OPEN DAIRY, APIARY & CULINARY SHOW
OPEN TEXTILES, ARTS & CRAFTS SHOW**

☐ Male ☐ Female

EXHIBITOR NAME _____

STREET ADDRESS _____

CITY _____ STATE _____ ZIP CODE _____

PHONE # _____

BIRTHDATE _____ AGE _____

E-Mail: _____

SOCIAL SECURITY # _____

EXHIBITOR NUMBER _____

(To be assigned by fair office.)

■ **ENTRY DEADLINE FOR ALL PROJECTS IS
5:00 p.m. FRIDAY, JULY 15, 2016.**

■ **ENTRIES SHOULD BE MAILED TO:**

Amy Thompson
P.O. Box 108
Roseville, IL 61473
(309) 426-2012

or email to: warrencofair1928@gmail.com

■ **PICK UP ENTRY TAGS AT JUDGING
LOCATION AT THE TIME OF CHECK IN.**

Please mark which show you are entering, Jr. or Open. Also, fill in Department letter K, L, M, P-L, P-M etc., Category, Class Number and Description of Entries. **ONE ENTRY PER LINE.**

JR & OPEN HOME ECONOMICS PROJECT ENTRIES ONLY

Jr. or Open	Dept.	Category	Class	Description of Entry
Jr	P-O	1	700	Cinnamon Rolls
Open	O	1	630	Chocolate - Frosted Cake

EXAMPLES

JR & OPEN HOME ECONOMICS PROJECT ENTRIES ONLY[illegible]

WARREN COUNTY FAIR BEER TENT CONCERT



**DIRT ROAD
ROCKERS**
PUNK
THROTTLE
TOUR

FRIDAY • JULY 22
9:00 p.m.
www.dirtroadrockers.com



JERAO HARNESS & BLACKGRASS
SOUTHERN COUNTRY MUSIC
HARMONY & COUNTRY MUSIC
GUARANTEED TO ENTERTAIN

SATURDAY • JULY 23
9:00 p.m.



Save
a lot
food stores

***Good Luck to all the
Warren County Fair Exhibitors!***

**ways
you
save!**

WARREN COUNTY

AGRICULTURAL FAIR

USE THIS ENTRY FORM FOR ONLY...

JUNIOR HOME ECONOMICS SHOWS
OPEN DAIRY, APIARY & CULINARY SHOW
OPEN TEXTILES, ARTS & CRAFTS SHOW

☐ Male ☐ Female

EXHIBITOR NUMBER _____
(To be assigned by fair office.)

EXHIBITOR NAME _____

STREET ADDRESS _____

CITY _____ STATE _____ ZIP CODE _____

PHONE # _____

BIRTHDATE _____ AGE _____

E-Mail: _____

SOCIAL SECURITY # _____

■ ENTRY DEADLINE FOR ALL PROJECTS IS
5:00 p.m. FRIDAY, JULY 15, 2016.

■ ENTRIES SHOULD BE MAILED TO:

Amy Thompson
P.O. Box 108
Roseville, IL 61473
(309) 426-2012

or email to: warrencofair1928@gmail.com

■ PICK UP ENTRY TAGS AT JUDGING
LOCATION AT THE TIME OF CHECK IN.

Please mark which show you are entering, Jr. or Open. Also, fill in Department letter K, L, M, P-L, P-M etc., Category, Class Number and Description of Entries. **ONE ENTRY PER LINE.**

JR & OPEN HOME ECONOMICS PROJECT ENTRIES ONLY

Jr. or Open	Dept.	Category	Class	Description of Entry
Jr	P-O	1	700	Cinnamon Rolls
Open	O	1	630	Chocolate - Frosted Cake

EXAMPLES

JR & OPEN HOME ECONOMICS PROJECT ENTRIES ONLY[illegible]



JENKS

Family Farms

Jenks Family Farms is a family-run grain farm located in west central, Illinois. Owned by brothers Andy and Tom Jenks, we are a growing operation that is built on trust and relationships with landowners. We strive to be good stewards of the land and provide employment and management opportunities which will strengthen our community. With honesty and integrity as central values, our goal is to create a well-respected legacy for future generations.



1325 - 100th Street
Monmouth, IL 61462
www.Jenksfamilyfarms.com

Phone/Fax: 309.734.8190
Email: info@jenksfamilyfarms.com
Andy's Email: andy@jenksfamilyfarms.com
Tom's Email: tom@jenksfamilyfarms.com





Brooke Johnson

*Congratulations from the
Warren County Fair Board,
the Pageant Crew*

2015

Miss Warren County Fair Queen

FU **HUSTON** **LAND IMPROVEMENT**

ROSEVILLE, IL • 309-738-1052
FARM DRAINAGE • BULLDOZING • SOIL CONSERVATION

663 105th Street
Roseville, Illinois 61473

Email: fdhuston@gmail.com

www.hustonlandimprovement.com

KANE TRUCKING

Ed's Cell: (309) 333-4962

Rt. 1, Box 46

Media, IL 61460

Bill's Cell: (309) 333-4527

423 U.S. 67

Roseville, IL 61473

Bundle's Cell: (309) 221-8921

Mike's Cell: (309) 313-3670

Proudly Serving Warren County for 44 Years!!



206 North Main Street • Monmouth, IL 61462 • (309) 734-2323



Support your LOCAL Roseville Hardware

Come in and check out our store.

(309) 426-2080

145 N. Main Street • P.O. Box 231
Roseville, IL 61473



Studio
Eleven 07

Full Service
Salon

Carrying
AVEDA
Products

Phone (309) 734-0107

1107 West Broadway • Monmouth, IL 61462



OSF[®] Roseville Clinic MEDICAL GROUP

Dr. Ronald K. Leonard, M.D.
and Staff



235 East Penn Ave. • Roseville, IL 61473 • (309) 426-2128

PERSONAL CREATIONS HAIR & NAILS

Annette Thompson

Kitty Haskins
(309) 313-3463

(309) 426-2262

290 East Penn Ave. • Roseville, IL 61473



JOHN R. HUSTON LANDSCAPING

(309) 224-9372

RANDY'S WELDING & AUTO REPAIR

RANDY GOODING
Owner

660 - 90th Ave.
Roseville, IL 61473

Shop: 309-426-1559
Cell: 309-371-5562



BRUCE FOOTE CHEVROLET, INC.

Sales - Service - Body Shop

(309) 734-2138

1349 South Main Street • Monmouth, IL 61462

SEAN STEVENS INSURANCE
GREAT RATES GREAT SERVICE
FOR ALL YOUR HEALTH & LIFE
INSURANCE NEEDS

309-734-7276 309-337-3523

tina huston
tmh designs

Print Media Design

(309) 426-2052

819 Old U.S. Highway 67 • Roseville, Illinois 61473

Robert G. Thompson
TRUCKING

201 - 150th Avenue
Kirkwood, IL 61447

(309) 768-2697
Kent Cell: (309) 255-0058
Bob Cell: (309) 255-4603



RARITAN STATE BANK

"The Bank of Friendly Service"

BOARD OF DIRECTORS

Jan J. VanArsdale, Chairman
Michael L. Neff, Vice Chairman
Mark H. Erickson
Marc Coursey
Joseph W. Krupps
William J. Simonson
Steven Wisslead

OFFICERS AND EMPLOYEES

Robert B. Schleich , CEO/President	Samantha Kreps , Assistant IT Coordinator
Angela Pollock , CFO/Cashier	Donna Painter , Data Processor
Marc J. Coursey , Sr. Lending Officer	Tami Heller , Data Processor
Joseph A. McCleary , Asst. Cashier	Stacy Fisher , Loan Processor
Kim Kane , Loan Officer	Nancy Rankin , Customer Service Rep.
Cody Whiteside , Loan Officer	Donna Hilten , Customer Service Rep.
Thad Tharp , Loan Officer	Dana Lafary , Customer Service Rep.
Christine A. Argenbright , Sr. Admin. Asst.	Brooke Day , Operations Assistant
Carlyn Anders , Data Processor Supervisor	Amanda Jack , Data Processor

ABINGDON BANKING CENTER

Douglas C. Meadows, Abingdon Bank Manager
Brenda Landon, Administrative Assistant
Nicki Stranger, Loan Officer
Mark Simpson, Loan Officer
Jennifer Repp, Customer Service Representative/Supervisor
Christel Lambasio, Customer Service Representative
Cathleen Ruhl, Customer Service Representative
Joyce Andrews, Customer Service Representative

BUSHNELL BANKING CENTER

Mark Rodeffer, Bushnell Bank Manager
Sarah McCleery, Loan Officer
Rachael Sloan, Administrative Assistant
Melissa Lillie, Customer Service Representative/Supervisor
Dawn Peters, Customer Service Representative
Carla Promission, Customer Service Representative



MARTIN— —SULLIVAN



JOHN DEERE



BIG OR SMALL, MARTIN SULLIVAN HAS THE TRACTOR FOR YOU!

1305 S. Main Street
Monmouth, IL 61462
309-734-3218

www.martinsullivan.com
www.facebook.com/MartinSullivanInc

2800 E. Jackson
Macomb, IL 61455
309-833-4149

Find us in Aledo, Bloomington, Bradford, Brimfield, Carthage, Galesburg, Kewanee, Lexington,
Macomb, Monmouth, Pleasant Hill, Quincy, & Roanoke



GREAT LAKES HYBRIDS

Generations Ahead

Kevin Killey • (309) 426-2431

Warren County Fair Entry Form

LIVESTOCK ENTRY FORM ONLY

☐ Male ☐ Female

EXHIBITOR NAME _____

STREET ADDRESS _____

CITY _____ STATE _____ ZIP CODE _____

PHONE # _____

BIRTHDATE _____ AGE _____

E-Mail: _____

EXHIBITOR NUMBER _____

(To be assigned by fair office.)

■ **ENTRY DEADLINE FOR ALL LIVESTOCK IS 5:00 p.m. TUESDAY, JULY 19, 2016.**

■ **A LATE FEE OF \$20/HEAD WILL BE ACCESSED FOR ENTRIES RECEIVED AFTER THE DEADLINE.**

■ **ENTRIES SHOULD BE MAILED TO:**

Warren County Fair
P.O. Box 136
Roseville, IL 61473

■ **Stall and/or Pen Fees Must Accompany Entries.**

■ **DO NOT MAIL ENTRY FEES. THEY ARE DEDUCTED FROM PREMIUMS.**

Please mark which show you are entering, Department letter, A, B, F, etc., Category, Class Number and Description of Entries and Number of entries if more than one animal in that class.

Registration & Health Papers due at weigh-in.

NUMBER OF ANIMALS ENTERED:

Hogs _____

Cattle _____

Sheep _____

Goats _____

PREMISE ID REQUIRED _____

STALL & PEN FEE INFORMATION

_____ Cattle Stalls @ \$5.00 = _____

_____ Hog Pens @ \$7.00 = _____

_____ Sheep Pens @ \$7.00 = _____

_____ Goat Pens @ \$7.00 = _____

_____ Total Enclosed \$ _____

LIVESTOCK ENTRIES ONLY

Dept.	Category	Class	Description of Entry	# of Entries
A	1	101	Crossbred Jr. Heifer Calf	1

LIVESTOCK ENTRIES ONLY

[illegible]

SPECIALIZING IN:
FARMLAND • ACREAGES • FARM EQUIPMENT •
RESIDENTIAL REAL ESTATE • BUSINESS LIQUIDATION



290 WEST RAILROAD ST.
P.O. BOX 500
ROSEVILLE, IL 61473-0500

PH. 309-426-2000
MOBILE 309-337-1761
VANADKISSON@MCHSI.COM
VANADKISSON.COM



95 Public Square
Monmouth, IL 61462

Telephone: (309) 734-8388

Fax: (309) 734-8083

Toll Free: 1-800-248-8583

E-mail: shelly@kelloggprinting.com

Website: www.kelloggprinting.com

For All Your Printing Needs...

• ***Banners, Signs, Posters***

Full Color, Vinyl & Paper, Wide Format

• ***Mailing Services***

Address Management Special Messages
Personalization Sticky Notes
Inkjet Addressing

• ***All Types of Commercial Printing***

Black & White to Full Color

Business Cards	Posters
Letterheads	Pens, Pencils
Envelopes	Plaques
Custom Forms	Register Forms
Brochures	Gift Certificates

• ***Wedding Invitations & Accessories***

GOOD LUCK TO ALL THE EXHIBITORS!

THANK YOU TO THE FAIR BOARD AND
ALL THE VOLUNTEERS THAT MAKE THE FAIR POSSIBLE!



DENNIS, MISHELLE, CHELSEA & JOSH

Air Conditioned Community Room.
Gym, Cafeteria & Rooms Available for Rent.
Plan to have your next Reunion,
Party, Charitable Event or Reception
at the Roseville Community Center.



Roseville Community Center, Inc.
265 West Penn Ave.
P.O. Box 215
Roseville, IL 61473

HOME OF...

Roseville Kids Place
Warren County YMCA Program Center
Roseville Friendship Center
Boy Scout Troop 336 • Cub Scouts Pack 336
Roseville Girl Scouts
Helping Hands of Roseville
Food Pantry & Family Resource Center

WARREN COUNTY

AGRICULTURAL FAIR

AD INDEX

1st Farm Credit Services.....	11	McClure Custom Pumping, LLC.....	36
American Family Insurance	1	McDonald's	67
A.C. McCartney.....	41	McGrew Feedlot Equipment.....	24
Van Adkisson Auction Service, LLC	93	McLouth Family	94
Advanced Plumbing, Culligan.....	55	Midwest Bank of Western Illinois.....	78
Anderson Custom Baling, Jim & Mike Anderson	36	Modern Grain Systems, Inc.	7
Big River Resources	14	Monmouth Chiropractic Clinic.....	41
Birkey's	71	No Place Like Home.....	72
The Bottlery	88	Neff Co. Avon	72
Bruce Foote Chevrolet, Inc.	88	Painter Farm Equipment	65
Carrier Services	61	Parkins Trucking	96
Carthage Livestock, Inc.	26	Personal Creations.....	88
CBG-Mid-Miss Group	78	Pioneer Hi-Bred, Matt Mahoney.....	15
Corzatt Land & Livestock	13	R&D Forage.....	10
Citizens National Bank a div. of Morton	Back Cover	Randall's Performance, Inc.	58
Cindy Lou's Kitchen.....	52	Randy's Welding & Auto Repair, Randy Gooding	88
Clark & Glasgow	67	Raritan State Bank, Abingdon Banking Center	89
Cole Implement Corp.	62	Red Wrench Repair	67
Community National Bank, Monmouth	67	Riden Farm Supply	58
Corman Memorial Home	67	Roseville Clinic, Dr. Ronald Leonard.....	88
Country Financial, Mark Colclasure	69	Roseville Community Center	94
Crop Production Services	28	Roseville Foods.....	14
Custom Tub Grinding, Doug Earp.....	26	Roseville Hardware	88
Fairview Sale Barn, Inc.	32	Roseville Independent.....	32
Farmers Grain Co.	Inside Front Cover	Roseville Kids Place.....	76
Flatt's Pump & Electric.....	41	Roseville Lanes & Diner	19
Fusion Tech.....	18	Roseville Rehabilitation & Health Care	26
G&M Distributors.....	59	Roseville Veterinary Services, P.C.	67
Gipe Seeds, Shane Gipe.....	76	Save A Lot	82
Great Lakes Hybrids, Kevin Killey	90	Sean Stevens Insurance	88
Haase Embroidery	52	Security Saving Bank.....	26
Halcomb Oil Company	65	Snap-on Tools	67
Heartland Tree Service	77	Stronghurst Grain & Mdse.	67
George Hennenfent, Attorney at Law	41	Studio Eleven 07.....	88
Hiel Trailer Sales	67	The Lunch Box	6
John's Plumbing, Heating & Cooling	8	The New Image.....	32
John R. Huston Landscaping	88	Thompson Brothers Painting, Inc.	18
Tina Huston Designs	88	Thompson Insurance Agency, Inc.	30
Huston Cattle Company, Mike Huston.....	20	Robert G. Thompson Trucking	88
Huston Farms, Rick Huston	34	Tompkins State Bank.....	60
Huston Land Improvement Co.....	87	Tri-County Cattlemen	67
Huston Veterinary Service.....	9	Unland Companies	46
IPP Associates, LLC	71	Walters Accounting & Tax	60
JDA Trucking, Jerry Adkisson.....	41	Warren County YMCA	62
Jenks Family Farms	85	Warren Heating & Cooling.....	60
W. Scott Jones, D.D.S.	41	Warren-Henderson Farm Bureau	60
Kane Trucking, Ed & Bill Kane.....	88	West Central FS, Inc.	32
Kellogg Printing	93	Western Illinois Home Health Care	12
Kirkwood-Stronghurst Veterinary Clinic	41	Western Illinois Realty, LLC	43
Kunes Country.....	Inside Back Cover	Western Illinois Title Company.....	72
LaCrosse Seed, Mark Gillen	55	Westwood Embryo Services, Inc.	22
Liqui Grow.....	41	Wick Buildings, Phil Britt	67
LSI Accounting.	72	Wise Family-Hoover Hall	63
Martin Sullivan.....	90	WRAM	67
MC Sport & More	75		

Parkins

TRUCKING
L.L.C.
Roseville, IL



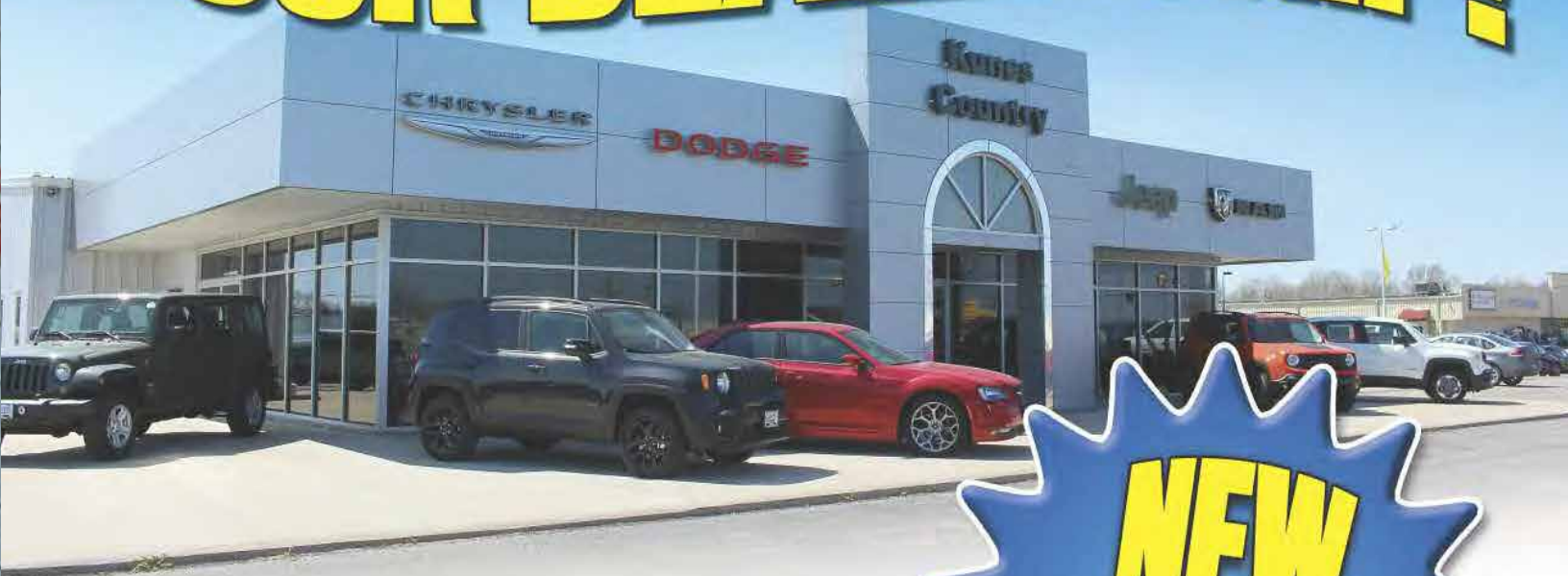
**For Reliable Trucking & Repair Work
Call Brian at Parkins Trucking.**

(309) 221-7042

1223 North 6th Street • Monmouth, IL 61462

WARREN COUNTY

We want to be
YOUR DEALERSHIP!



- **Parts & Service**
- **Lowest Priced Tires Guaranteed!**
- **State of the Art Collision Center**
- **Courtesy Loaner & Shuttle Service**
- ***Over 3,500 New & Used Vehicles In Stock!***



KUNES
COUNTRY
AUTO of MONMOUTH
GROUP



DODGE

Jeep



RAM

1121 N. 6th St. // (309) 734-2155 // KunesMonmouth.com

Our Commitment To You!

When you need us...we will be there.

We are your local bank, the bank you have grown to know and trust, and we are here for the long run.



Citizens Bank

A Division of **Morton Community Bank**
Member FDIC

www.HometownBanks.com

100 South Main Roseville, IL 61473 309-426-2193

Lending & Leasing for Agriculture

Buildings



Financing is subject to credit approval

Operations



Equipment



Farmland

