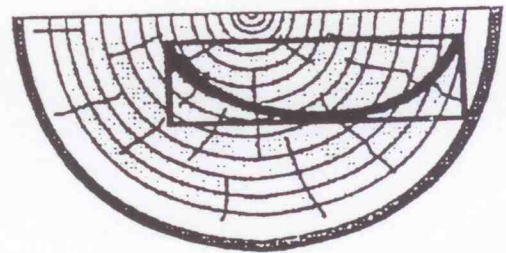
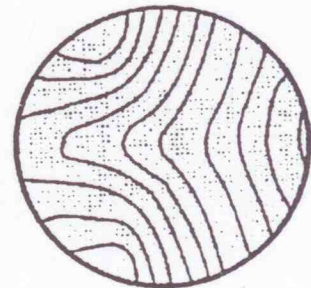
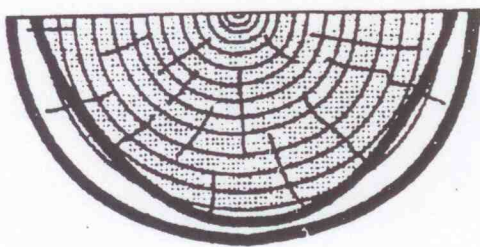
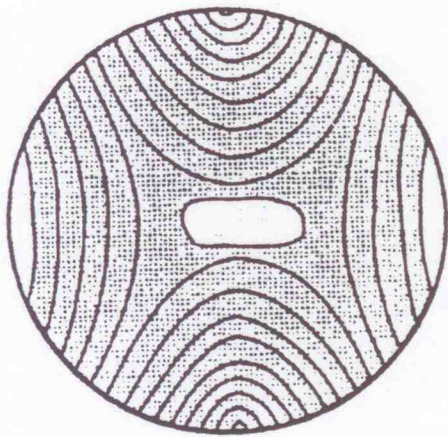


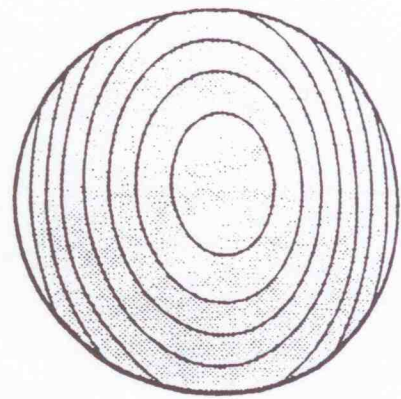
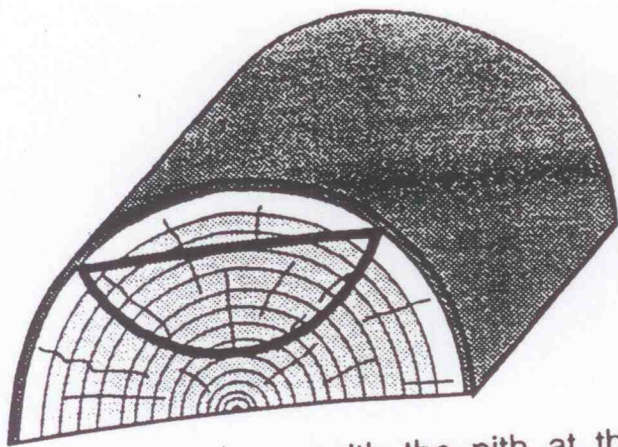
An open form turned with the pith at the rim will display a hyperbolic pattern inside.



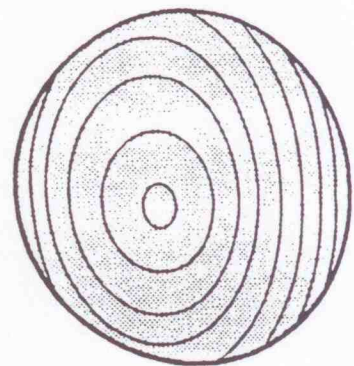
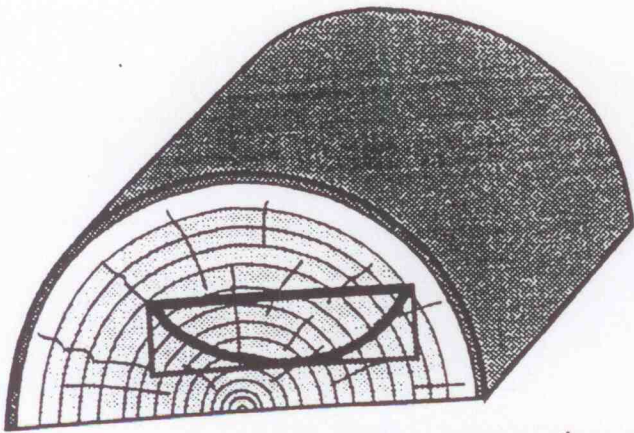
A bowl form in which the rim and bottom cut into the sapwood will show white patches at those points.

© Todd Hoyer

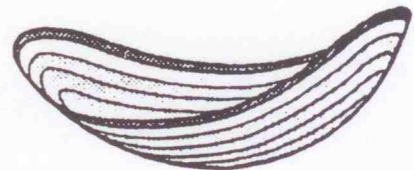
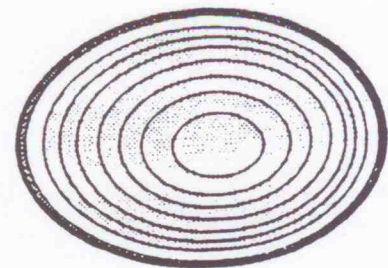
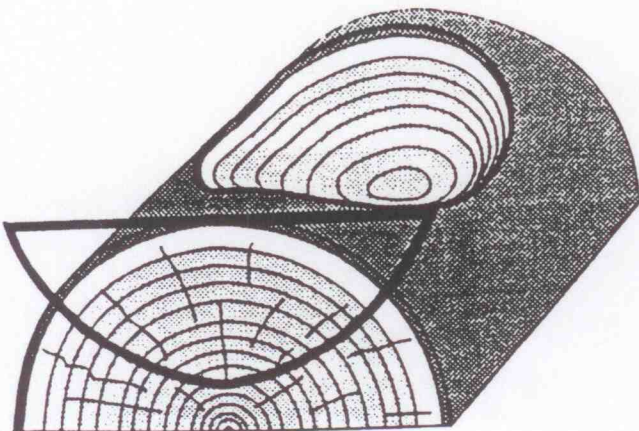
Boards in which the rings are not centered will have the pattern shift toward the pith side.



Open bowls turned with the pith at the bottom will display a concentric oval pattern. The outermost rings will be broken due to the flat rim being cut through them. If the edges cut into the sapwood, a sapwood streak will show at each edge.



Bowls turned from boards where the pith is off centered will create an off centered pattern.



By extending the open form through the bark, an oval shaped bowl with an undulating natural rim will be produced. All the rings will be whole because none of them were cut off by the flat rim.

