

Now Presenting a New Luxury Home

# RIVER CREST

3701 38<sup>th</sup> Street North, Arlington Virginia 22207

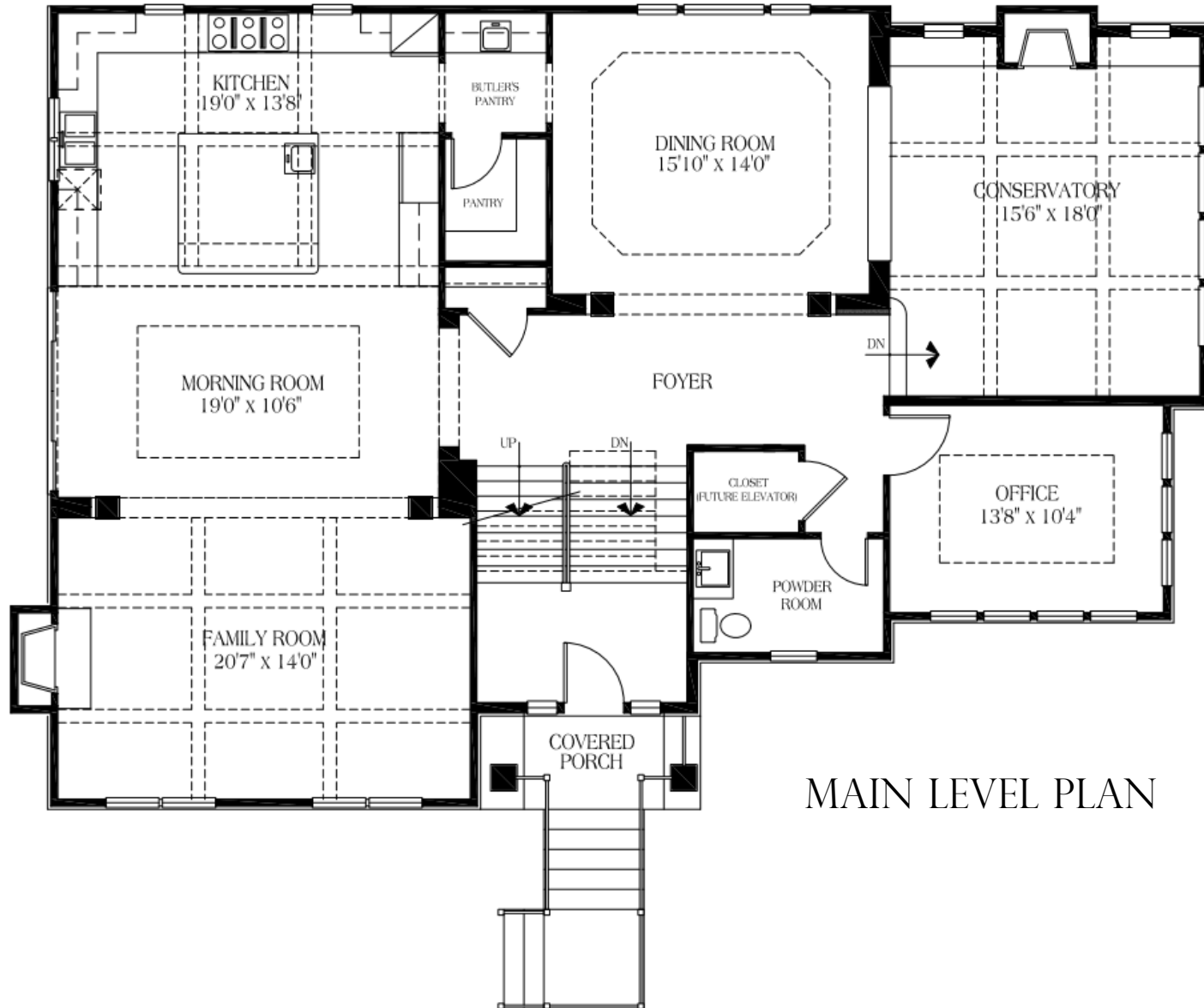


Chris Reynolds, Broker  
703-593-9086 Direct  
Chris@citysub.net Email

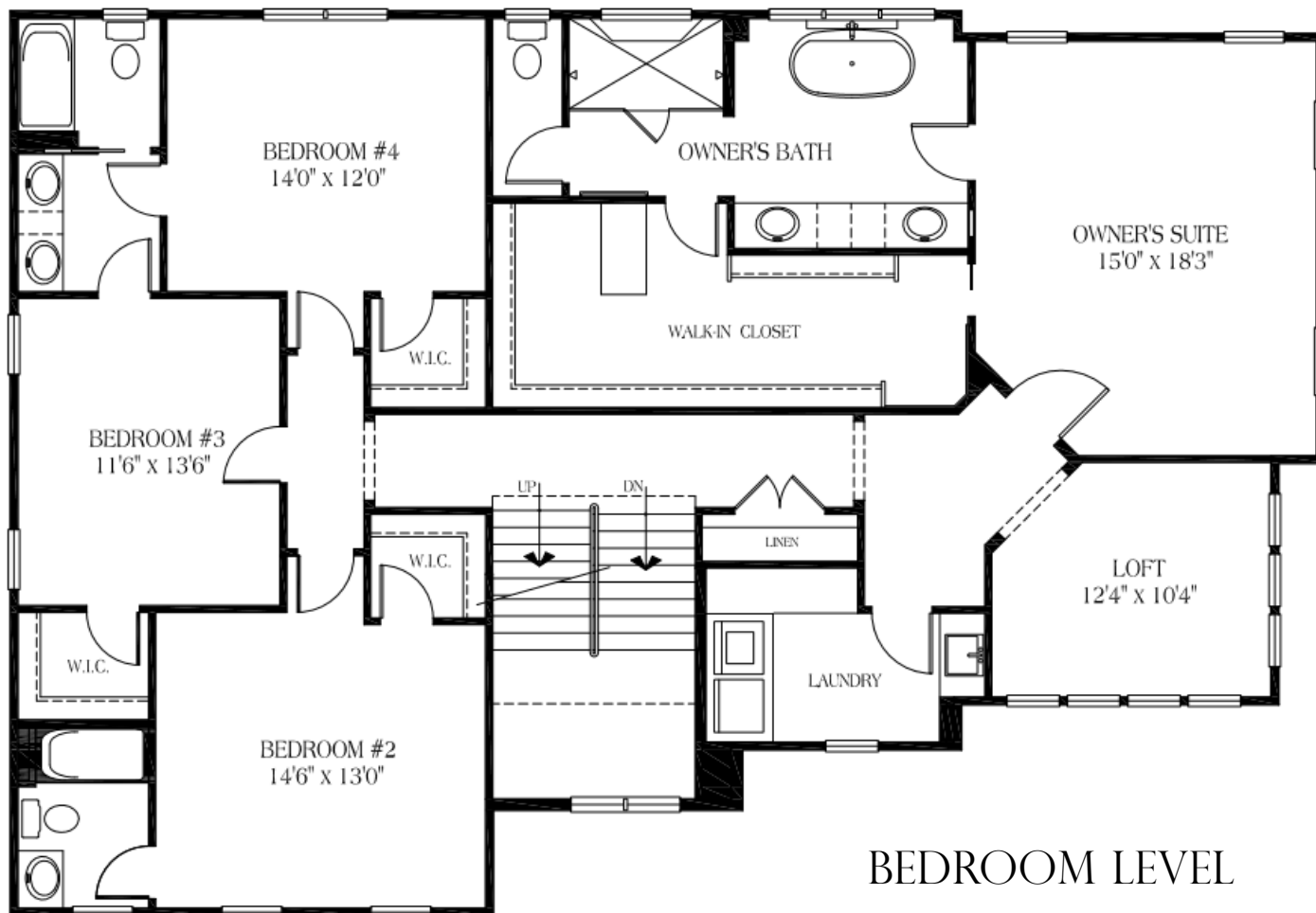
**CITY & SUBURBAN**  
REAL ESTATE BROKERAGE

# 3701 38<sup>TH</sup> STREET NORTH

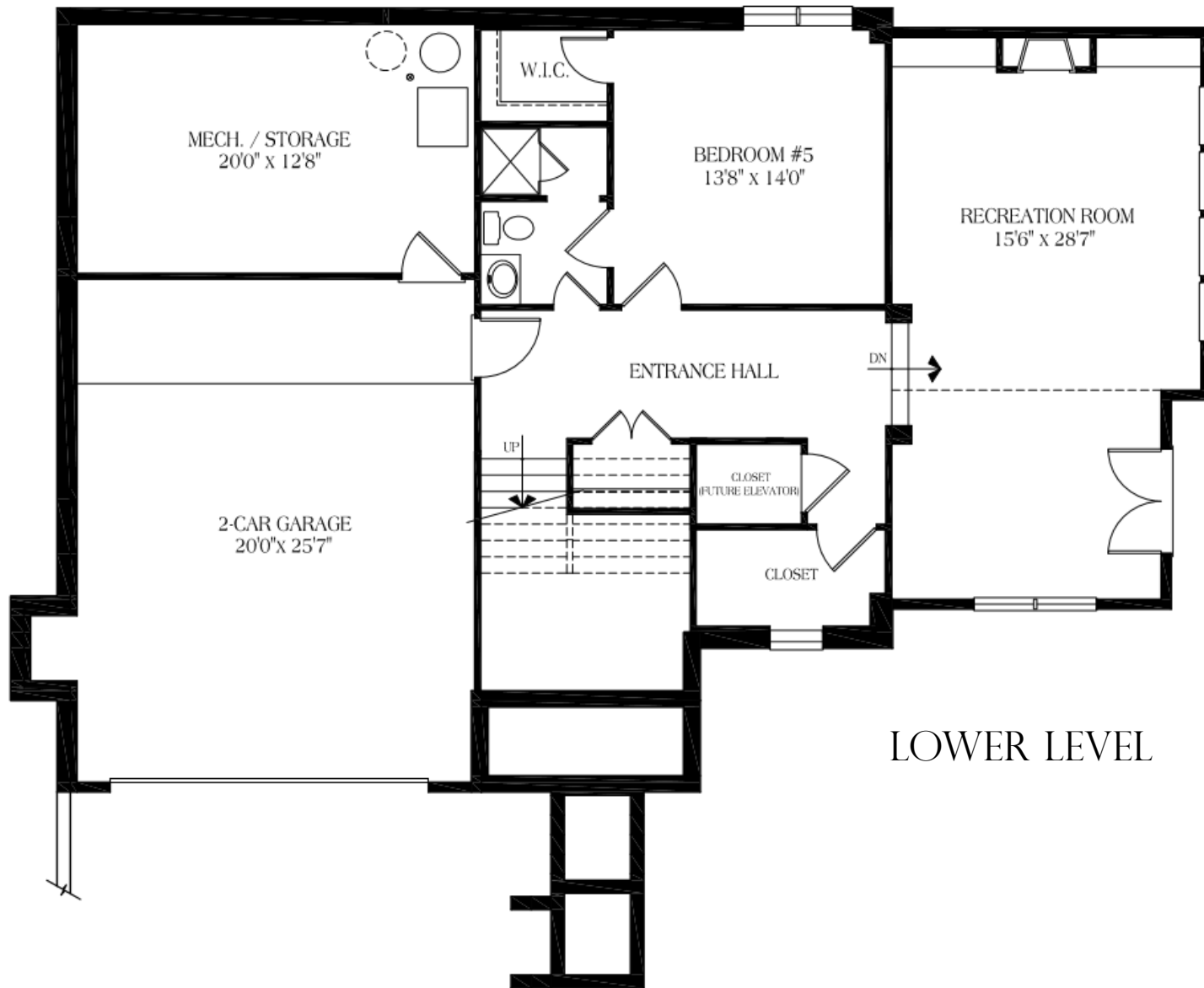
- ❖ Construction by TJO Company, a third generation builder known for its impressive record and body of work.
- ❖ Inspired new European Contemporary design by Sutton Yantis Associates.
- ❖ Stucco siding with wood accents above a stone foundation.
- ❖ Stunning Main Level features a formal Office and Conservatory, a grand Dining Room, expansive Family Room, Breakfast area, and Eat-in Kitchen with world class appliance package.
- ❖ Upper Level includes a spacious Owners Suite, Three additional Bedrooms, a unique sun-filled Loft plus Laundry Room.
- ❖ Lower Level is finished with a walk-out Recreation Room, Bedroom suite, Mud Room and oversized two car garage.
- ❖ Family area flows out onto a large flagstone patio with an outdoor cooking area and gas firepit.
- ❖ Custom oversized Lincoln windows and doors.
- ❖ Decorator ceramic tile bathroom walls and floors.
- ❖ Extensive Landscaping package.
- ❖ Jamestown Elementary, Williamsburg Middle and Yorktown High Schools.
- ❖ Two block quiet walk to the Gulf Branch Park with trails to the Potomac River.
- ❖ One light to Washington, D.C. via Chain Bridge.
- ❖ Easy walk to Madison Center with playing fields, dog run and community activities building.
- ❖ Many selection items available for Purchaser.

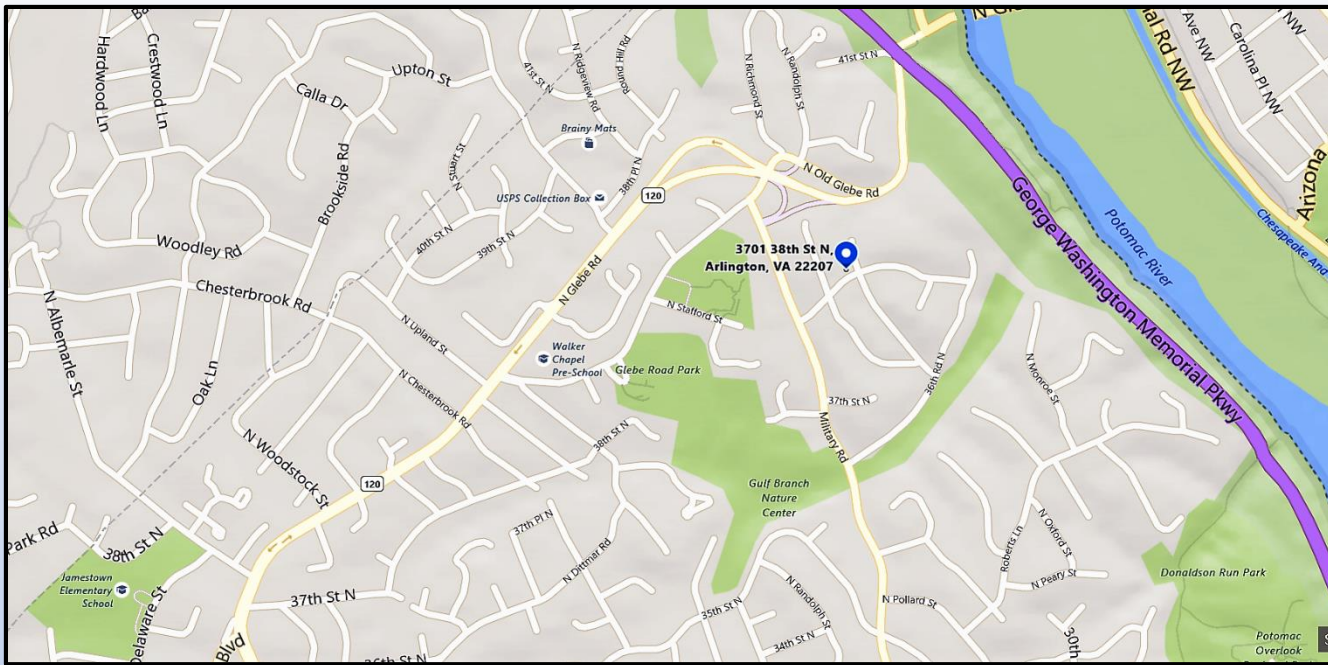


MAIN LEVEL PLAN



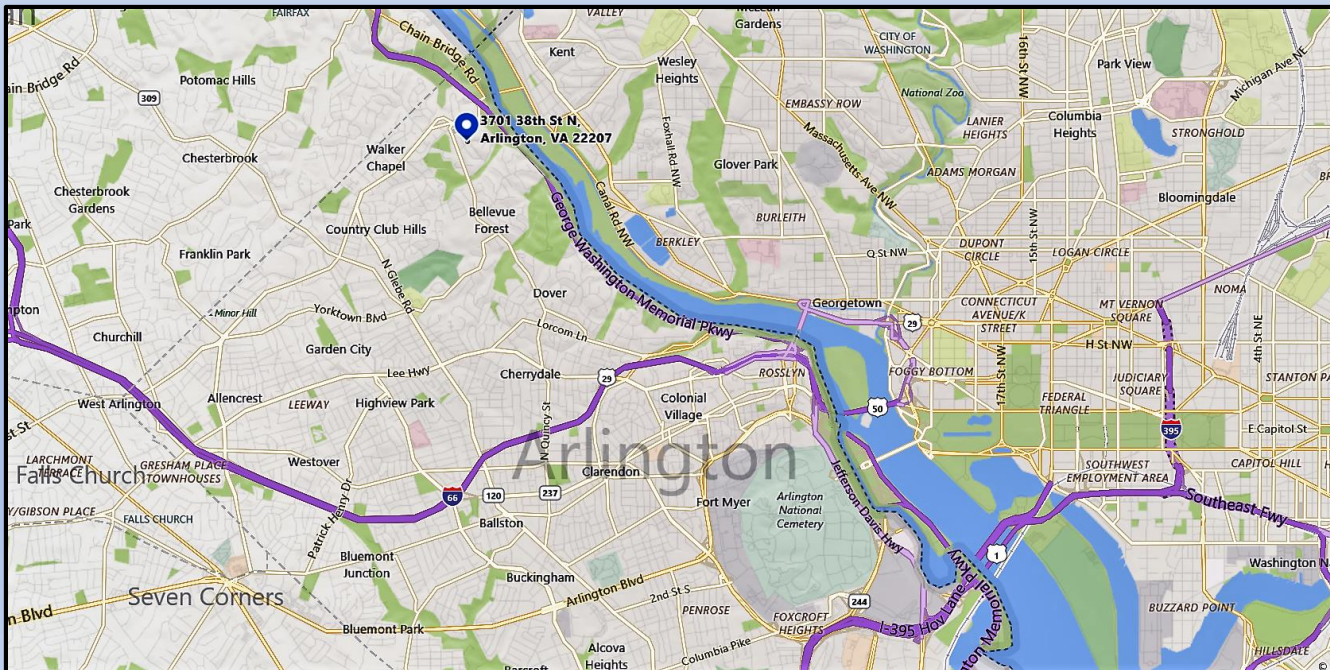
BEDROOM LEVEL





## NEIGHBORHOOD

Glebe Road Park  
Gulf Branch Park  
Trails to Potomac  
Madison Comm Ctr  
w/ playing fields,  
dog run and tot lot  
Chain Bridge  
C & O Canal



## LOCATION

DC via Chain Bridge  
and Canal Road.  
All major shopping  
venues in Arlington  
and Tysons Corner.  
Reagan National.  
MetroRail via  
Metro Bus at the  
corner.

3701 38<sup>th</sup> Street North  
Arlington, VA 22207

RiverCrest Subdivision  
Lot 26, Section 1  
RPC # 04-037-070  
Lot size 10,107 SF

*Finished Areas*

Main Floor: 2,020 SF  
Bedroom: 2,011 SF  
Lower Lvl: 1,365 SF  
Total: 5,396 SF

*Builder*

TJO Company LC

*Design*

Sutton Yantis Architects

*Sales and Marketing*

City & Suburban Homes Co., Inc

