



Declaration Creeping Bentgrass

The New Standard!



Declaration Creeping bentgrass is a completely new, cutting edge creeping bentgrass developed by LebanonTurf. Declaration exhibits top rated overall turf quality and dollar spot resistance. Reducing dollar spot through genetics could have a tremendous impact on how superintendents manage their turf, with potentially large savings for maintenance and fungicide inputs.

In an article in the June 2004 TurfNet monthly, Dr. William Meyer from Rutgers talks about how important breeding for disease resistance is in bentgrass, and says "over 70% of the fungicides used on golf courses goes to control dollar spot on bentgrass. That's big money, and a huge incentive to breed for improved dollar spot resistance." Dr. Stacy Bonos – bentgrass breeder from Rutgers also states "compared to traditional varieties that require fungicide treatments every 7-10 days during peak (dollar spot) pressure, Declaration should require only one or two sprays per year to remain acceptably clean".

2003 data from a Rutgers trial seeded in September 2002 details Declaration as the top ranked variety for dollar spot resistance among all commercially available and experimental varieties. Declaration has been entered in the 2003 NTEP fairway and greens height trials at multiple locations around the country. Full first year data will be available in spring 2005. Preliminary data from the NTEP greens trial at Virginia Tech ranks Declaration as the #1 variety for overall turf quality.



For Fairways, greens, & tees

Establishment

- New Seeding Rate: 1.0 lb./1000sq. ft
- Interseeding Rate: 0.25-0.5 lb./100 sq. ft.

Mowing Heights

- 0.1 to 0.15 in. height on greens
- Ideal for fairways or tees at higher levels

Declaration Creeping bentgrass

- The new standard of creeping bentgrass is here!
- Ideal for fairways, greens, and tees
- Ranked #1 in Rutgers 2002 trials (2003 data) for Dollar spot resistance
- Ranked #1 of commercial varieties for overall turf quality
- Ranked #1 in 2003 NTEP (preliminary 2004 data) at Rutgers and VA Tech

LebanonTurf

www.LebanonTurf.com • 1-800-233-0628

Performance of Creeping Bentgrass Cultivars and Selections in a putting green trial seeded September, 2002 at North Brunswick, NJ.

Table 6	Turf Quality Average* 2003	Dollar Spot Disease Average** 2003
DSB	7.0	6.8
Declaration	6.8	8.7
Benchmark DSR	6.3	8.3
Penn A-1	5.7	7.0
Penn G-6	5.6	6.1
King Pin	5.6	7.2
Penn G-2	5.6	6.5
PennLinks II	5.6	7.6
13M	5.5	8.1
NuPenn	5.5	5.9
Penn A-2	5.4	4.7
Penn G-1	5.2	6.3
Penn A-4	4.9	5.6
CATO	4.8	6.7
Penneagle	4.8	4.9
Bengal	4.7	5.3
Southshore	4.6	5.1
L93	4.5	5.1
Seaside II	4.4	6.4
Backspin	4.3	3.6
Trueline	4.1	8.2
Brighton	4.1	7.1
Penncross	4.1	6.3
Pennlinks	4.0	6.5
Penn Trio	3.8	6.5
Viper	3.8	5.7
Providence	3.7	6.6
Pennway	3.7	6.8
18th Green	3.6	1.9
Kromi	2.2	6.0
LSD	0.7	1.2

* Turf Quality average= is an average of 9 months from Oct. 2002-Sept. 2003
1- 9 Rating scale 9= best overall turf quality

** Dollar spot disease average= is an average of three rating dates
1- 9 Rating scale 9= Least disease

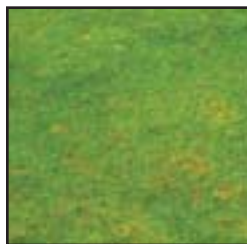


**2003 NTEP Bentgrass (Putting) Trial - 2004 Data
Turf Research Center, Virginia Tech
February - June Ratings**

Variety	Pink Snow Mold	Brown Patch	Winter Color	Spring Greenup	Genetic Color	Mean Turf Quality
Declaration	3.0	8.7	7.0	4.3	7.3	4.2
Alpha	4.7	8.7	7.7	4.3	8.0	4.1
IS-AP 9	3.7	8.7	7.7	8.3	7.7	4.1
Penncross	4.3	9.0	7.3	5.0	7.7	4.1
Bengal	4.7	8.3	7.7	5.0	7.3	4.0
CY-2	4.0	8.7	7.7	7.0	6.3	4.0
Independence	4.0	8.3	7.3	4.7	7.7	4.0
SRX 1GD	5.7	8.3	7.3	5.0	8.0	4.0
A03 - EDI	4.3	8.3	7.7	4.7	7.3	3.9
DSB	4.3	8.0	7.0	5.0	7.3	3.9
SRX 1GPD	5.7	8.7	8.0	6.0	7.0	3.9
13M	4.0	8.0	7.7	5.0	7.3	3.8
235050	4.3	8.7	7.0	4.0	7.3	3.8
23R	4.3	7.7	7.0	4.3	7.7	3.8
LS-44	5.0	8.7	7.0	5.3	8.0	3.8
Pennlinks II	3.7	8.7	7.3	5.0	7.3	3.7
Vesper	3.0	8.3	8.3	8.3	7.0	3.7
T-1	4.0	8.7	6.3	4.7	7.0	3.6
Penn A-1	3.7	7.0	6.7	5.0	7.7	3.5
9200	3.7	8.0	8.0	5.0	8.0	3.4
EFD	3.0	7.3	8.0	8.0	6.7	3.4
Greenwich	3.7	7.3	9.0	7.7	6.3	3.4
Benchmark DSR	3.7	8.0	6.3	4.7	8.0	3.3
IS-AC 1	3.7	8.0	9.0	7.3	5.3	3.3
LSD	1.3	1.1	N.S.	1.1	1.1	0.4

Categories follow a 1- 9 rating system
N.S.= no significant differences

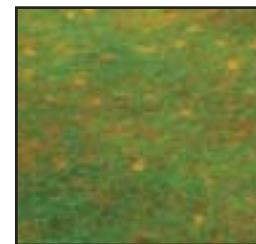
**Photos taken at NTEP Fairway Trial Rutgers University,
North Brunswick, NJ - August 4, 2004
Showing overall turf quality and occurrence of dollar spot**



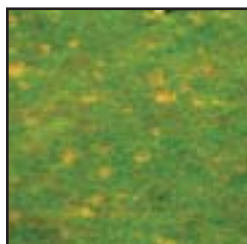
Declaration



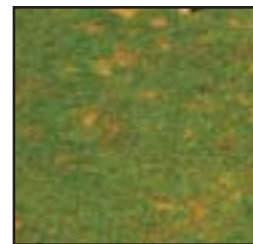
Benchmark



Bengal



LS-44



L-93



Kingpin