



Additional Petrographic Services

Photomicrography, Optical Microscopy, XRD, XRF, & SEM-EDS

Photomicrographs of Your Thin or Polished Sections:

\$12/per set per sample

For an additional \$10, you can request photomicrographs of your thin or polished sections in a CD, taken by using high-resolution, latest-model, state-of-the-art digital cameras attached to research-grade petrographic microscopes. At least three sets of plane and cross polarized-light photomicrographs will be provided per sample, with scale bars, depicting the detailed mineralogy, grain and pore size distribution, and texture of the rock.

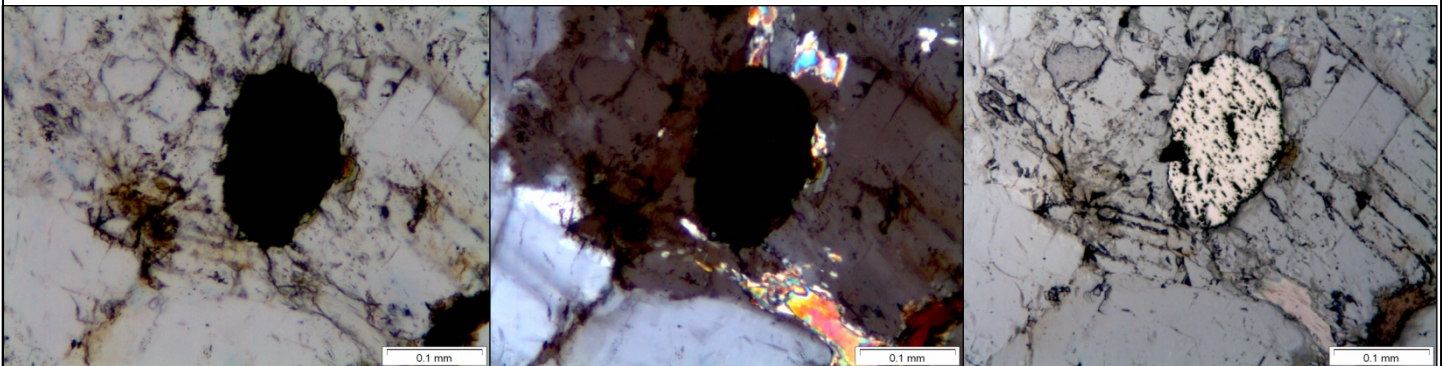
Comprehensive Petrographic Examinations:

\$1000 per sample

- Preliminary description of sample
- Preparation of polished thin section (27 x 46 mm size)
- Optical microscopical examinations of thin section in plane and crossed polarized lights
- Scanning electron microscopy & X-ray microanalysis
- Photomicrographs of thin section from optical and scanning electron microscopy
- Mineralogical composition from X-ray diffraction (XRD) and quantitative determination of mineral content
- Major element oxide composition from X-ray fluorescence (XRF)

Report of Petrographic Examinations:

\$250 per report



Applied Petrographic Services, Inc.
Berkshire Center, Suite 103B, 4727 Rt. 30, Greensburg, PA 15601
724-834-3559 (Tel) 800-899-0522 (Toll Free) 724-834-3556 (Fax) www.petrography.net

