

## Centrifugal Drum Pump Motor Models: SP-410EX, SP-420EX, SP-280P, SP-ENC, SP-A1 & SP-A2

### SP-ENC Spare Parts Lists

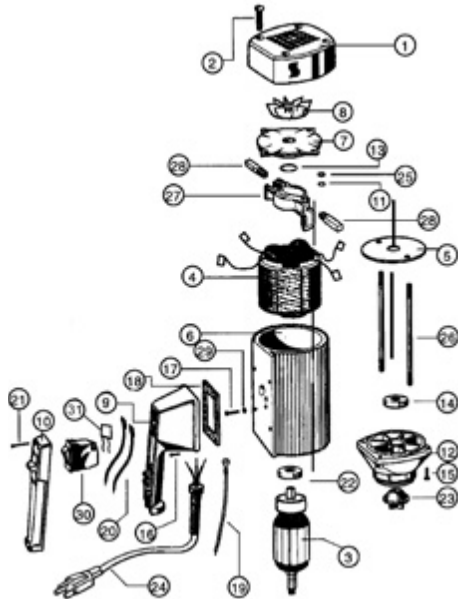



Figure 3 – SP-ENC

#### SP-ENC See Figure 3

Ref. #	Description	P/N for SP-ENC	Qty
1	Motor Cover	3000	1
2	Screw	3130	1
3	Armature, 110-120V	3502	1
	220-240V	3701	1
4	Stator, 110-120V	3503	1
	220-240V	3702	1
5	Guide Disc	3504	1
6	Motor Housing	3510	1
7	Bearing Cover	3511	1
8	Fan	3512	1
9	Switch Housing	8001	1
9A	Switch Housing for Variable speed, Includes Potentiometer		
	110-120V	8004	1
	220-240V	8005	1
10	Switch Cover	8002	1
11	Lock Washer	8071	2
12	Lower Housing	8100	1
13	Wave Washer	8125	1
14	Ball Bearing	8126	1
15	Screw	8130	4
16A	Screw, 110-120V	8131	4
16B	220-240V	8131LVR	4
17	Ground Screw	8162	1
18	Gasket, 110-120V	8167	1
	220-240V	8167LVR	1
19	Earthing Lead	8185	1
20	Lead	8183	2
21	Screw	8220	5
22	Ball Bearing	8331	1
23	Motor Coupling	8333	1
24	Power Cord w/Strain Relief & Plug,		
	110-120V	8360	
	220-240V	8705	1
25	Hexagon Nut	8448	2
26	Rod Connector	3703	2
27	Brush Holder	8508	1
28	Carbon Brush, 110-120V	8509	2
	220-240V	8703	2
29	Star Washer	8511	1
30	Overload Switch,		
	8.5 amp 110-120V	8611	
	5 amp 220-240V Low Voltage Release	8704LVR	1
31	EMI Filter	8003	1
32	Repair Kit 110-120V (includes PN's 8333 & (2) 8509)	9055	1
33	Repair Kit 220-240V (includes PN's 8333 & (2) 8703)	9056	1

 SP-ENC Series motors should not be used to pump flammables.