



Fargo-Moorhead, ND Chapter #246

The Prairie Rose



*As material for the
construction of our
building, I pledge
the agility of
my hands, the
ability of my mind,
and the integrity
of my heart.*

July/August 2014

Message From FM #246

National & Chapter Election Results Announced!

- Congratulations to the 2014-2015 NAWIC National Officers:

President	Sandy Field, CBT, CIT
President-Elect	Riki Lovejoy, CBT, CIT
Vice President	Connie Leipard, CIT
Secretary	Amy Berg, CBT, CIT
Treasurer	Stephanie Crane, CIT
Imm. Past President	Yasmine Branden, CCA
- Congratulations to the 2014-2015 Chapter Leadership team:

President	Amy Berg, CBT, CIT
Vice President/IPP	Dawn Wiedewitsch
Secretary	Phyllis Phillips
Treasurer	Suzi Retzlaff
Director	Joanna Slominski

With the elections done, now is the time to start preparing and planning for the coming year. If you have ideas for monthly programs please share them with the members so we can work out the details and get it on the schedule.

The chapter has been busy the past month working on advertising to promote NAWIC and our chapter - radio ads will be running through the end of 2014 on the six KFGO family radio stations and during the month of August a commercial will be running on WDAY TV - please watch and listen for these ads. (see schedule-bottom of page 3)

Check out pages 4 & 5 for our August & September Events. We hope you will be able to join us at one or both events. If you can't attend, please share the information with someone you think would be interested in learning more about the National Association of Women in Construction and all we have to offer.

The members of the Fargo-Moorhead, ND Chapter #246 look forward to meeting you soon!!

Fargo-Moorhead, ND Chapter #246

PO Box 763
Fargo, ND 58107-0763

nawicfm246@gmail.com

Website

www.nawicfm246.org

Chartered - June 3, 1978

Find us on

facebook

In This Issue

Message From FM246	1
Calendar/Upcoming Events	2-3
August Program Notice	4
September Golf Info	5
Meeting Minutes	6
Chapter Member Info	7
Regional & National Info	7
Committee Reports	8-10
NEF Information	11
Chapter Sales	12
Construction Education	13
Chapter Builds Challenge	14
Ads / Sponsorships	15
"Meet the Members"	16



Sun	Mon	Tue	Wed	Thu	Fri	Sat
		1	2	3	4 	5 AMEC Credentials due
6	7	8	9	10 FM 246 Membership Meeting	11	12
13	14	15 Chapter Leadership Form Due	16	17	18	19
20	21	22 Megan Meyer <i>happy birthday!</i>	23	24	25 Monthly reports due to Director	26 Suzi Retzlaff <i>happy birthday!</i>
27	28	29	30	31		

Upcoming 2014 / 2015 Events

ANNUAL MEETING & EDUCATION CONFERENCE (AMEC)	ANNUAL PLANNING CONFERENCE	40TH ANNUAL FORUM - 2015
<p>59th Annual Meeting Registration - due by June 30th</p> <p>JW Marriot Indianapolis Downtown Room Rates - \$159 (Sgl, Dbl, Tri or Quad)</p> <p>Keynote - "Speak to be Heard" Stacey Hanke, Communications Expert</p> <p>➤ Mini Trade Show, Workforce, Business & Personal Development along with the Association Workshops & Seminars</p>	<p><i>See Page 15 for More information</i></p> <p>Start making plans to attend Region 13's 2014 Annual Planning Conference (APC). Downtown Milwaukee.</p> <p><u>Leadership Training & Much More!!!</u></p>	<p><i>Fabulous 40th at the Falls Throwback to 1975"</i></p> <p>Holiday Inn City Center Downtown Sioux Falls Dbl or King Room - \$92/night + tax Two-Room Suite - \$139/night + tax</p> <p><i>Watch for more Info</i></p>
SEPTEMBER 3 - 6, 2014 INDIANAPOLIS, IN	October 10-11, 2014 Milwaukee, WI	April 23 - 25, 2015 Sioux Falls, SD



Sun	Mon	Tue	Wed	Thu	Fri	Sat
<ul style="list-style-type: none"> • Renewal statements sent out • Transition time between Incoming & Outgoing officers & Committee Chairs • Hold "Planning Session" for the coming year - review <i>Strategic Plan</i> 					1	2
3	4	5	6	7	8	9
10	11	12	13	14 ★ FM 246 Membership Meeting	15	16
17	18	19	20	21	22	23
24	25 Monthly reports due to Director	26	27	28	29	30
31	★ The Chamber "Business After Hours" - Holiday Inn Fargo 4:30-6:30					



MEDIA - NEWS - PRESS - RADIO - TV

Check out our radio & TV ad schedule!!

6 am - 6 am / Monday - Sunday

On the following stations:

KFGO AM - The Mighty 790
 WDAY FM - Y94
 KVOX FM - Froggy 99.9
 KVOX AM - 740 The Fan
 KWRK FM - Rock 102
 KMJO FM - Mix 104.7



Mon 8/4 - 9:41 am / 10:28 am

Tues 8/5 - 8:54 am / 9:24 am / 10:28 am

Wed 8/6 - 8:39 am / 9:24 am / 1:27 pm

Future dates will be posted on the Chapter website!



Fargo-Moorhead, ND Chapter #246

Monthly Program Notice

Thursday, August 14, 2014

Holiday Inn (Club I) I-29 & 13th Ave. Fargo, ND

Social Hour	5:30 pm
Dinner	6:00 pm
<i>(Order from menu - paid by individuals)</i>	
Meeting	7:00 pm

Program	6:30 pm
----------------	---------

“What is STEM? How does it relate to the construction industry?”

Presented by: David DeMuth, Jr.; Executive Director

Great Plains STEM Education Center & Professor at Valley City State University

STEM - Science, Technology, Engineering and Mathematics. Learning in these four curriculums is essential for all of our primary and secondary students regardless of their future career which includes the construction industry.

Items to be discussed:

- The percentage of women in the various construction industries/activities in ND & MN*
- Salary comparisons between women and men in the industry.*
- Educational attainment necessary or desired for construction and/or construction related fields.*

RSVP by August 11, 2014 to: Amy Berg
by phone: 218-234-6633
or email: aberg.nawic@yahoo.com

**National
Association
of Women
in Construction**

NAWIC
Builds



Your Career.



Your Education.



Your Future.

14th Annual Golf Scramble & Dinner

Rose Creek Golf Course
1500 Rose Creek Parkway East
Fargo, ND

Thursday, September 11, 2014

11:00 AM - Registration

12:00 PM - SHOTGUN START

Awards, prizes and dinner will follow.

Registration Deadline :

September 8, 2014



Rain
Or
Shine



Levels of Participation

*Be a **Golfer**, a **Hole Sponsor**, **Door Prize Sponsor** or make a **Cash Donation***

GOLFER (\$80 for one or \$300 for a team of four.) (**pay by CC \$85/\$310)

Each golfer will get 18 holes of golf with a cart, dinner and a chance for door prizes.

HOLE SPONSOR (\$100**) (pay by CC \$105)

A Hole Sponsor gets you a sign with your company name on it that sits at the tee box of a hole. You will also receive your name in the golf program and recognition at dinner)

DOOR PRIZE/DONATION SPONSOR

Donate items for Door prizes (company promo items) or make a cash donation. You will be recognized in the golf program.

Cash Prizes for:

1st & 2nd Place Teams
Longest Drive - Men & Women
Closest to the Pin - Men & Women
Longest Putt - Individual
Team Prize—Most balls in water (hole 3)

Putting Contest - 6 tries for \$5.00 (*cash only*)

Receive a ticket for each putt made and a chance to win a new putter

Tournament Extras:

\$ 5.00 Mulligans** (max. 4 per team)
(CC \$6.00) Used to "do over" a bad shot

\$10.00 Gimme String** (1 per team)
(CC \$11.00) 72" string - A shot (putt) that the players agree can count automatically (*as one stroke*) without actually being played.

\$10.00 Tiger Shot** (1 per team)
(CC \$11.00) On a specified hole - advance to designated second shot (unless you think you can out-drive Tiger..)

**** Credit Card Charges include a convenience fee**

National Association of Women in Construction

Fargo-Moorhead, ND Chapter #246 Membership Meeting Action Minutes DIY Wood Studio, Fargo, ND

June 12, 2014

APPROVED

Date: _____

Initialed: _____

CALL TO ORDER: The meeting was called to order at 6:45 pm by President Dawn Wiedewitsch

INTRODUCTIONS: Members present: Dawn Wiedewitsch, Amy Berg, and Phyllis Phillips along with our tour leaders Jim and Ann Clapper
There being 3 of 5 voting members in attendance, a quorum was established

NAWIC PLEDGE: As material for the construction of our building,
I pledge the agility of my hands, the ability of my mind
and the integrity of my heart.

PROGRAM: **Tour of DIY Wood Studio** - Ann welcomed us to the studio and Jim gave us a tour of the shop.

CORRESPONDENCE: *Incoming:* Passed
Outgoing: Email - Meeting Notice, Newsletter & Required Reports
Mailed - None

SECRETARY'S REPORT: May- Approved as printed

TREASURER'S REPORT: May- Filed for Audit
Presentation of Bills: Bill for meal—approved as per budget
Reports of Other Officers: None

COMMITTEE REPORTS: Printed in Newsletter - Updates were reported as needed
Chamber Update: Due to when we joined the Chamber, we are receiving free ads from KFGO & WDAY. With the WDAY ad we will have productions costs. Amy moved that we pay the amount and the motion passed.

UNFINISHED BUSINESS:
Election of Officers: As there is a single slate of officers, Secretary Berg moved that they be elected as presented with out a ballot vote. The officers for the 2014-15 year are: President-Amy Berg; IPP/VP-Dawn Wiedewitsch; Treasurer-Suzi Retzlaff; Secretary--Phyllis Phillips; Director(s)-Joanna Slominski

NEW BUSINESS:
AMEC Delegate: Amy Berg was nominated and elected as the chapter delegate to AMEC.

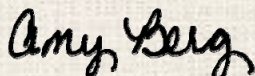
BOARD RECOMMENDATIONS: The Board made the recommendation on how to designate the funds we are eligible for from the overage the Quad Cities Chapter received in support of the 2014 Forum. As we had 50% of our members in attendance we are recommending we take a portion of the money and leave the remainder in the Regional Fund but designate it to be used for future CAD/Drafting Design regional prizes. The recommendation was approved as presented.

NEW MEMBER INSTALLATION: The new members installation ceremony will be held at our August meeting.

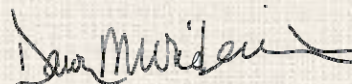
ANNOUNCEMENTS: Monthly Membership Recognition:
May - Overall - Amy - 49 / Chapter - Lynn - 24
Construction Word Meaning: Dawn got them both correct.
Safety: Lockout/Tagout Word Scramble - Dawn got them correct

Next Month Meeting: **July 10 - Wine/Walk-downtown Tour** - Networking Event
August 14 - STEM Program - Holiday Inn

ADJOURNMENT: There being no further business, the meeting was adjourned at 7:10 PM



Amy Berg, Secretary



Dawn Wiedewitsch, President

Chapter Member Information

Amy Berg, CBT, CIT

Joined - March 28, 1989
Innovative Window & Door Service, LLC
31576 SW Pickerel Lake Rd
Detroit Lakes, MN 56501
218-234-6633
aberg.nawic@yahoo.com

Lynn Madaus

Joined - December 1, 1996
Retired
2921 34th Ave S; #349
Fargo, ND 58104
701-200-8200
lynn_m89@yahoo.com

Phyllis Phillips

Joined - May 1, 2014
Wanzek Construction
2028 2nd Ave NW
West Fargo, ND 58078
701-412-6173
pphillips@wanzek.com

Suzi Retzlaff

Joined - October 1, 2006
Empire Engineering
1553 1st St
West Fargo, ND 58078
701-212-8484
retzlaff@hotmail.com

Joanna Slominski

Joined - May 1, 2014
Mortenson Construction
700 Meadow Lane N.
Minneapolis, MN 55442
701-566-2460
Joanna.slominski@mortenson.com

Dawn Wiedewitsch

Joined - February 1, 1998
Tomboy Tools
PO Box 871
Detroit Lakes, MN 56502
218-849-2582
dmwied@yahoo.com

Quote of the Month

"Courage - Success is not final, failure is not fatal: it is courage to continue that counts."

NAWIC
Builds



If you have anything you would like added to the Newsletter:

Please contact: Amy Berg:
Phone: 218-234-6633
(leave message)
Email: aberg.nawic@yahoo.com

Region 13 Information

Director

Diane Mike, CBT
Erdman Company
PO Box 44975
Madison WI 53744
Cell # 608-444-0531
Office: 608-410-8046
Email: dmike@erdman.com

WEBSITE

Visit the regional website at
www.nawic13.org

NAWIC Office Contact Info

NAWIC
327 S. Adams St.
Fort Worth, Texas 76104
Phone - 800-552-3506
Fax - 817-877-0324

WEBSITE

Visit our national website at
www.nawic.org

FACEBOOK

Connect with us on Facebook at
facebook.com/nawicnational



Committee Reports

MEMBERSHIP

Chapter goal for the year - "Build Membership"!!

One step to accomplishing this goal - we are sending out invites to 20 new companies per month, picked randomly from the yellow pages to introduce them to the Fargo-Moorhead, ND Chapter #246 of NAWIC.

NAWIC has a "Membership Challenge" for 2013-2014 - "Building your Chapter"

Each chapter is challenged to create their own form of a "building" and identify the components necessary to construct it. These components represent the chapter members - existing and potential. Examples would include a real estate firm to buy the land to place the building on, utility firm to layout existing and new lines, excavator, architect, engineer, contractor, roofer, mason, lawyer to settle purchase/leasing/contracts, facility personnel (client), etc. Suzi Retzlaff has finished our plan and since we are starting at the ground floor that is where our building is starting (see diagram and info on page 13).

This challenge works with our goal to build our chapter membership!! So if you know anyone who is actively employed in any facet of the construction industry, from trades to owners (Active/Corporate Membership); a strong supporter of the industry (Associate Membership) or a student in a construction related field of study (Student Membership) please contact Membership Chair - Amy Berg for more information or go to our website - www.nawicfm246.org.

UPDATE: With the assistance of Gaila Schreurs of the Gr. Sioux Falls Chapter #237, Amy Berg called on 11 Construction businesses on June 16th.

Check out "Meet the Members" on Page 16



Do any of these describe your job? Then NAWIC is for you!!!

- Accounting / Contract Administrator
- Business Owners
- Engineers / Architects
- Office Manager
- Project Managers
- Operations Managers
- Tradeswomen
- College Student (Construction Major)

PR & MARKETING

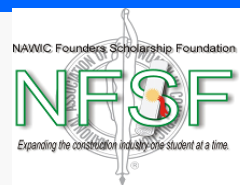
Information is being sent to our PR & Marketing contacts on a monthly basis for inclusion in their monthly news happenings.

➤ For joining the Chamber before the end of April, the chapter will be running an ad on the six KFGO radio stations from July through December of 2014 and a commercial on WDAY Channel 6 during the month of August. These ads will be promoting NAWIC as a whole and our membership.



\$CHOLAR\$HIP - DUE TO NFSF BY FEBRUARY 28TH!!!

Please let all students you know who are enrolled in one of the many construction fields that they may be eligible for a scholarship from the NAWIC Founders' Scholarship Foundation (NFSF). Applications are available on the NAWIC website - www.nawic.org Education NFSF and must be returned to the Foundation by February 28th each year to be considered.



Committee Reports

BYLAWS

The two national bylaws that had been circulated were voted on at NAWIC's Mid-year board meeting. Watch for further details from Director, Diane Mike.

WAYS & MEANS (FUNDRAISING)

Sponsorship Opportunities

Information packet is available on the chapter website: www.nawicfm246.org

Auction

November 20th is the date of our 2014 Auction. It's never too early to start thinking of who to invite and start gathering auction items.

Golf Tournament

September 11th, 2014 - golf at Rose Creek Golf Course - dinner & awards following provided by Seasons at Rose Creek. Watch for further details!!

PROGRAMS, EDUCATION AND PROJECTS (PEP)

Upcoming Events - Monthly Programs & Events

Below is the list of dates & planned events through March:

Date	Event	Topic
July 10	Fun Networking Night	Wine Walk—downtown Fargo
August 14	Membership Meeting	"STEM"
September 11	Golf Tournament	14th Annual Industry Programs Fundraiser
October 9	Membership Meeting	TBD
November 20	Fundraiser	Annual Auction
December 11	Membership Meeting	TBD

If you have an idea for a program for the coming year, please let us know at nawicfm246@gmail.com.

WIC WEEK - MARCH 1 - 7, 2015

It's never too soon to start planning for next year - start thinking about what we can do to promote and enhance the success of women in the construction industry!!

Women In Construction (WIC) Week

Committee Reports



SAFETY - POWERED INDUSTRIAL TRUCKS (Taken from "Safety Puzzles for OSHA's Top Ten Violations")

Safety Nuggets!!

Each year, approximately 95,000 employees are injured - and 100 fatally injured - while operating powered industrial trucks. Forklift turnover accounts for most of these fatalities, followed by workers on foot being struck by forklifts, and workers falling from forklifts.

The average car weighs 3,000 pounds, whereas the average forklift weighs 6,000 pounds, and with a capacity load, the total weight mass is 16,000 pounds. Try stopping *that* on a dime!

Forklift training consists of a combination of formal instruction (e.g., lecture, discussion, interactive computer learning, videotape, written material), practical training (demonstrations performed by the trainer and practical exercises performed by the trainee), and evaluation of the operator's performance in the workplace.

Forklift refresher training should be provided to an operator when:

- The operator has been observed operating the vehicle in an unsafe manner;
- The operator has been involved in an accident or near-miss incident;
- The operator has received an evaluation that reveals they are not operating the truck safely;
- The operator is assigned to drive a different type of truck; or
- A condition in the workplace changes in a manner that could affect safe operation of the truck.

An evaluation of each powered industrial truck operator's performance should be conducted at least once every three years.

A powered industrial truck is unattended:

- When the operator is 25 feet or more away from the vehicle that remains in his view or
- When the operator leaves the vehicle and it is NOT in his view.

When a powered industrial truck is left unattended:

- Load engaging should be fully lowered;
- Controls should be neutralized;
- Power should be shut off; and
- The brakes are set.
- The wheels should be blocked if the truck is parked on an incline.



SAFE FORKLIFT DRIVING PRACTICES INCLUDE THE FOLLOWING:

- Do not operate a forklift unless you have been trained and licensed.
- Use seatbelts.
- Use extreme caution on grades, ramps, or inclines. Normally you should travel only straight up and down.
- On all grades, tilt the load back if applicable, and raise it only as far as needed to clear the road surface.
- Do not raise or lower the forks while the forklift is moving.
- Do not handle loads that are heavier than the rated weight capacity of the forklift.
- Operate the forklift at a speed that will permit it to be stopped safely.
- Slow down and sound the horn at intersections and other locations where vision is obstructed.
- Look toward the path of travel and keep a clear view of it.
- Do not allow passengers to ride on forklift trucks unless a seat is provided.
- When dismounting from a forklift, always set the parking brake, lower the forks, and neutralize the controls.
- Do not elevate a worker on a platform unless the vehicle is directly below the work area.
- Prohibit stung driving and horseplay.
- Do not allow any employee under 18 years old to operate a forklift.





NAWIC Education Foundation



Educating the Construction Industry Today . . . and Tomorrow.

NAWIC Education Foundation

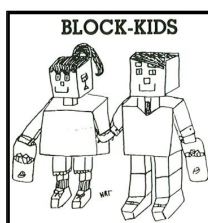
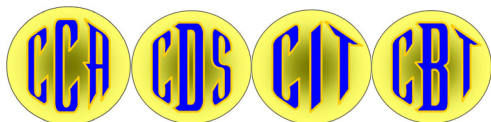
651 Danville Dr., Suite 100
Orlando, FL 32825

NEF Administrator - Patti Susko

Phone #: 407-384-9429
Fax #: 407-384-9430
Toll Free: 866-277-2883
Email: nef@bellsouth.net

ADULT EDUCATION PROGRAMS

Certified Construction Associate (CCA)
Construction Document Specialist (CDS)
Construction Industry Technician (CIT)
Construction Bookkeeping Technician (CBT)



Grades 1 - 6



Grades 8 - 12



Grades 9 - 12

Youth Programs

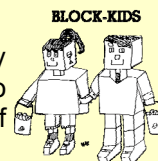
CAD/Design Drafting -



The 2014-2015 CAD/Design Drafting Problem and info is now available on the NAWIC Education Foundation website.

Block Kids -

Introduces children to the construction industry in an effort to create an awareness of and to promote an interest in future careers in one of the many facets of the industry.



NOTE: All "blocks" shall be interlocking types of the "Micro" size 2, 4, 6, 8 and 10 posts.
(No "Duplo" size blocks).



BECOME AN NEF AMBASSADOR... Would you like to help promote NEF to all of the Construction Industry?

Ambassadors will receive:

- A **bronze pin** for completing **one** item,
- A **silver pin** for completing **two** items, and
- A **gold pin** for completing **three** items or more.



The criteria to become a NEF Ambassador and the nomination form are available on the NEF website at www.nawiceducation.org.

The Fargo-Moorhead, ND Chapter
has the following NAWIC
promotional items for sale

For more details contact:

Amy Berg, CBT, CIT
aberg.nawic@yahoo.com

Tote Bag

SanMar Microfiber
14" X 17 1/2"

\$30.00 each.



Back Pack

Port & Company
14" X 17 1/2"

With Front Zipper Pocket

\$10.00 each.



Golf Towel

With hook
11 1/2" X 17 1/2"

\$10.00 each.



Qty	Item	Cost Ea.	Extended Cost
	Tote Bag	\$ 30.00	\$
	Back Pack	\$ 10.00	\$
	Golf Towel	\$ 10.00	\$
		Subtotal *	\$
* Plus Shipping			

Name: _____

Company ** _____

Address: _____

City: _____ State: _____ Zip Code: _____

Email address: _____ Contact Phone #: _____

(please provide a contact email address and/or phone #)

We will contact you with the final amount due that will include the shipping charges.

CONSTRUCTION EDUCATION

POWERED INDUSTRIAL TRUCKS: CONNECT THE TERMS *(BRING YOUR ANSWERS TO THE MEETING)*

1	Center of Gravity	_____	The truck's axis of rotation when it tips over
2	Counterweight	_____	The distance between the centerline of the vehicle's front and rear wheels
3	Fulcrum	_____	The weight that is a part of the truck's basic structure that is used to offset the load's weight and to maximize the vehicle's resistance to tipping over
4	Grade	_____	The point on an object at which all of the object's weight can be considered to be concentrated
5	Lateral Stability	_____	The truck's resistance to tipping over sideways
6	Line of Action	_____	An imaginary line through an object's center of gravity
7	Load Center	_____	The horizontal distance from the load's edge (or the fork's or other attachment's vertical face) to the line of action through the load's center of gravity
8	Longitudinal stability	_____	A surface's slope that is usually measured as the number of feet of rise or fall over 100-foot horizontal distance (measured as a percent)
9	Track	_____	The truck's resistance to overturning forward or rearward
10	Wheelbase	_____	The distance between wheels on the vehicle's same axle

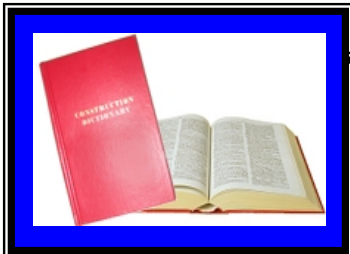
Answers will be posted on chapter website after the meeting - www.nawicfm246.org

CORE PURPOSE

TO ENHANCE THE SUCCESS OF WOMEN IN THE CONSTRUCTION INDUSTRY.

CORE VALUES:

BELIEVE • PERSEVERE • DARE



THIS MONTHS CONSTRUCTION WORDS:

What do I mean?

- 1) Fire Stop _____
- 2) Oolite _____

➤ Whoever brings the correct definition to the meeting will receive a small prize.

Good luck to all!!!

(From - Construction Dictionary)

Answers from last month's Words:

- 1) Convent - A building for the use of a group of nuns
- 2) Sheen - The gloss seen at a glancing angle on an otherwise flat paint finish

Last months winner (s) - Dawn Wiedewitsch got both correct

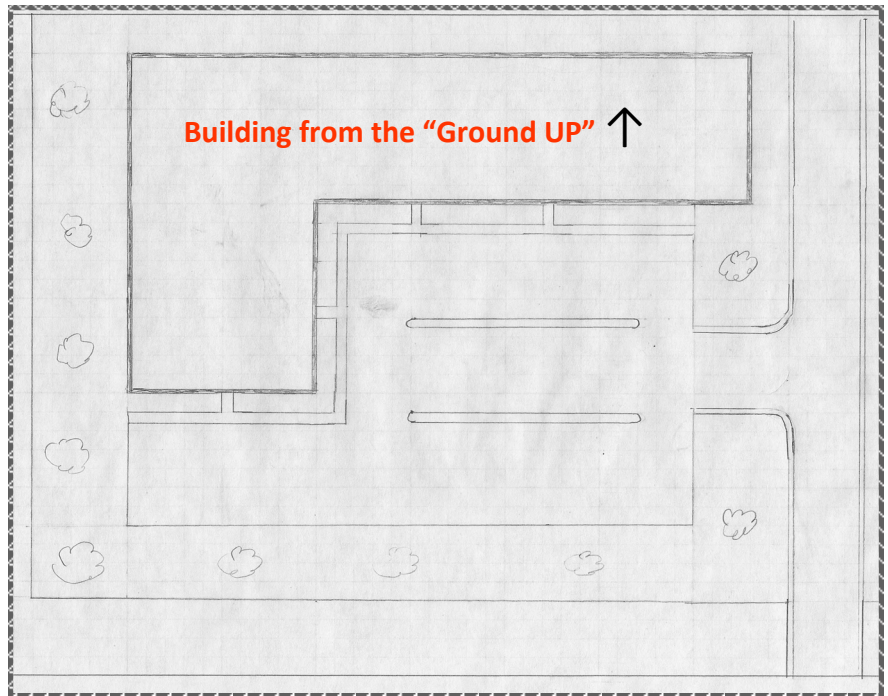


Membership Challenge

"Building Chapter #246"

Do you know of or are you a women employed in one of the many phases of the construction industry listed below? If so, we NEED you to help build the Fargo-Moorhead, ND Chapter #246.

For more information contact:
 Membership Chair - Amy Berg
 aberg.nawic@yahoo.com
 218-234-6633



Architecture	Engineering	Interior Design
	Suzi Retzlaff (Empire Engineering)	
CONTRACTORS		
Electrical	HVAC	Plumbing
Roofing	Carpentry	Earthwork
Utilities	Residential	Paving
	Amy Berg (Innovative Wdw & Dr Service, LLC)	
	General	
	Joanna Slominski (Mortenson Construction)	
	Phyllis Phillips (Wanzek Construction)	
Landscapers	Construction Equipment / Tools	Real Estate
	Dawn Wiedewitsch (Tomboy Tools)	
Financials	Material Suppliers	Safety / Training
	Lynn Madaus (Brock White Co.) Retired	
Insurance	Marketing	Other

Chapter #246 Sponsors



**Innovative
Window
& Door
Service, LLC**

31576 SW Pickerel Lake Rd.
Detroit Lakes, MN 56501

Gary Berg - 701-371-6183
Amy Berg, President - 218-234-6633
aberg55@yahoo.com

Sponsorships Available:

Annual Sponsorships:

- \$250 - General Contractor
- \$200 - Contractor *
- \$150 - Sub-Contractor*
- * Select one of the following events
 - Golf Tournament
 - Auction Fundraiser

Event Sponsorships:

- \$100 - Project Manager
- \$ 50 - Trades Person
- \$ 25 - Construction Supporter
- Single Events
 - Block Kids Program
 - CAD/Design Drafting Competition
 - WIC Week Events
 - Networking Event(s)

For complete sponsorship details and the commitment form go to the chapter website at www.nawicfm246.org.



Meet the FM #246 Members

Name:	<i>Suzi Retzlaff</i>
Home Address:	1553 1st Street; West Fargo, ND 58078
Phone # / Email:	701-212-8484 / retzlaff@hotmail.com
Company:	Empire Engineering
Work Address:	1553 1st Street; West Fargo, ND 58078
Phone # / Email:	701-212-8484 / retzlaff@hotmail.com
Nature of Business:	Civil Engineering
Job Title:	Engineer
Years with Company:	9
Duties & Responsibilities:	Civil engineering consulting
Additional Construction Experience:	Civil engineering design with various engineering firms
Years in Construction	15 (6-Employed / 9 - Self-employed / Owner)
Preferred Contact:	Mailing & Phone - work
Education:	Bachelors in Civil Engineering from UND
Computer Skills:	
Birthday (Month/Day):	7/26
Family:	Husband, Cory / son Lincoln & daughter Miranda
Interests & Activities:	Writing, computers & reading
NAWIC Joined Date:	2006
How did you hear about NAWIC?	
What made you decide to join?	
What makes you stay?	
Why did you choose a career in construction?	My father is a civil engineer and I worked for him and saw what they did.
<i>NAWIC/NEF Experience:</i>	
Local:	Treasurer
Regional:	
National:	